

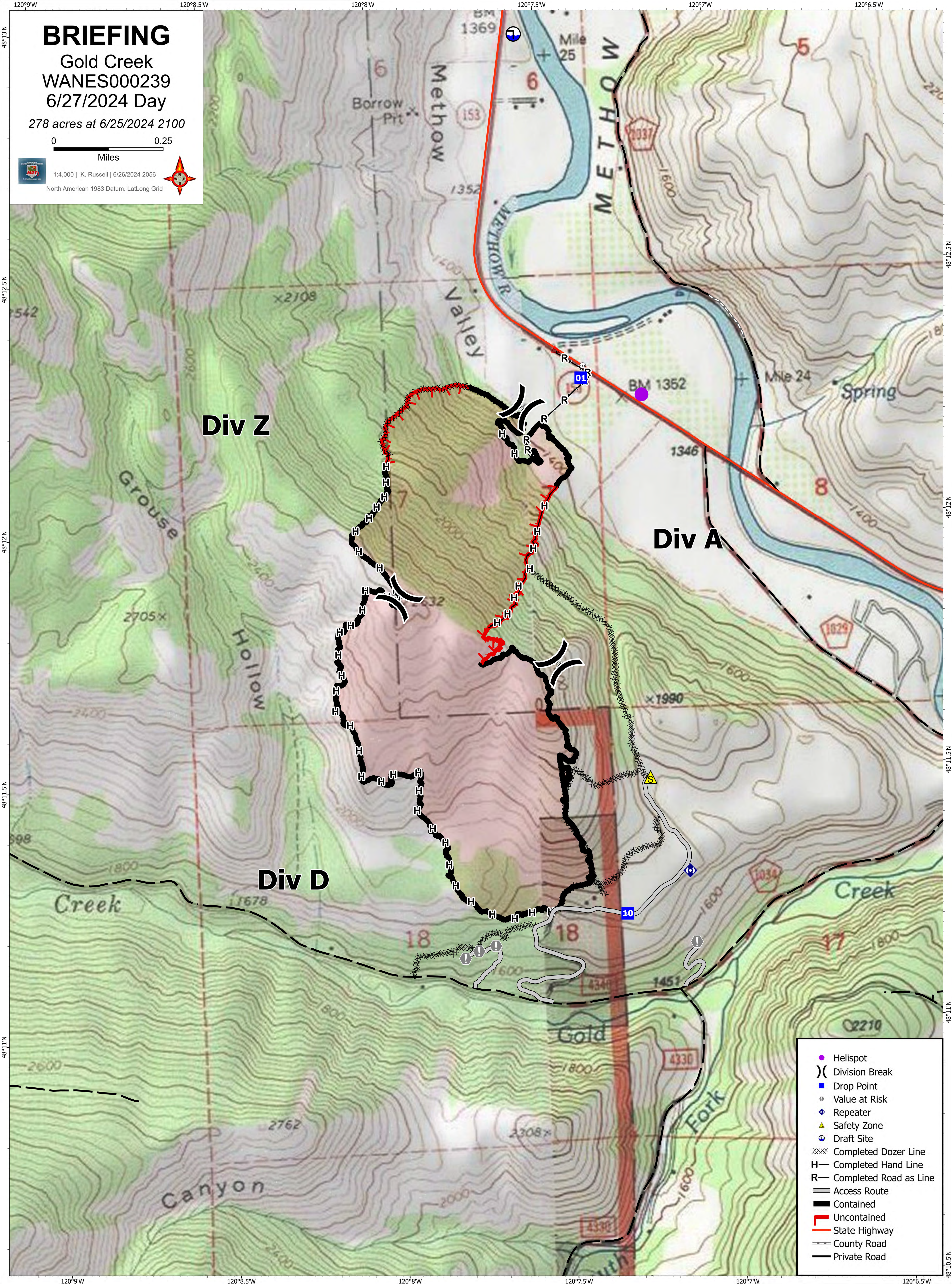
BRIEFING

Gold Creek
WANES000239
6/27/2024 Day

278 acres at 6/25/2024 2100



1:4,000 | K. Russell | 6/26/2024 2056
North American 1983 Datum, Lat,Long Grid



- Helispot
-) Division Break
- Drop Point
- Value at Risk
- ◆ Repeater
- ▲ Safety Zone
- Draft Site
- ××× Completed Dozer Line
- H Completed Hand Line
- R Completed Road as Line
- Access Route
- ▬ Contained
- ▬ Uncontained
- ▬ State Highway
- ▬ County Road
- ▬ Private Road