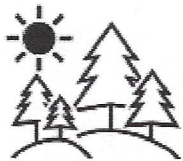
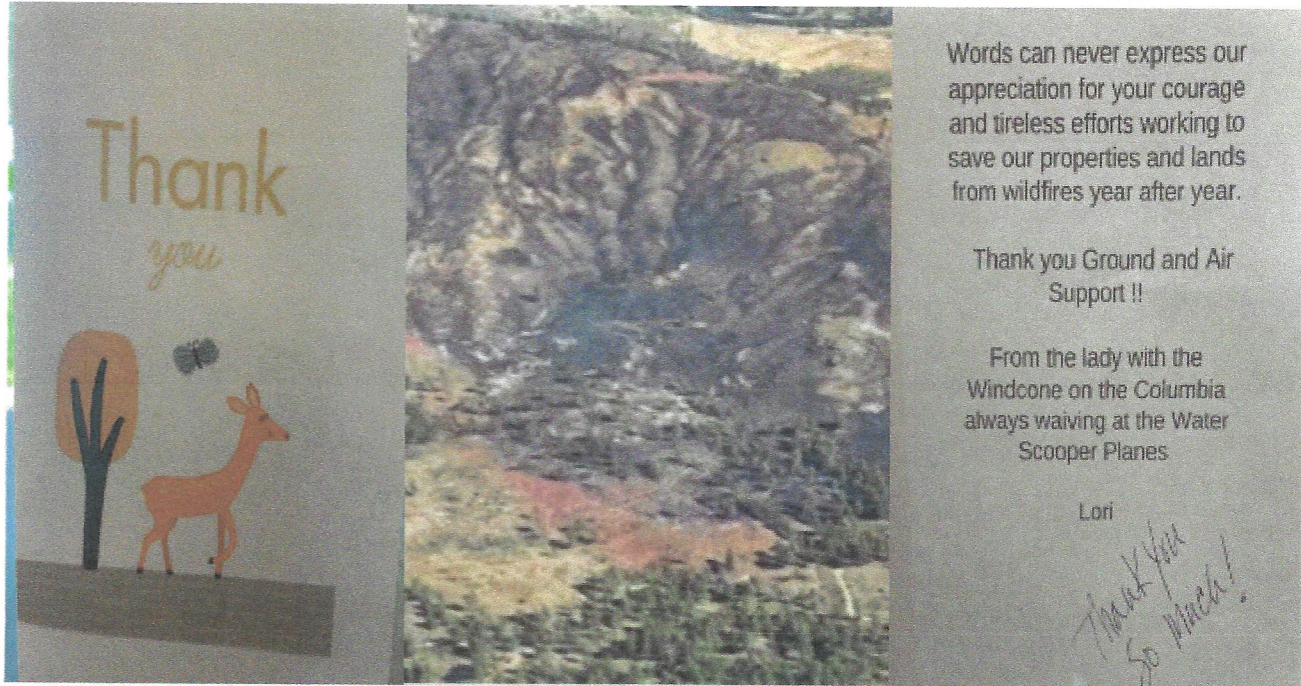


INCIDENT ACTION PLAN

GOLD CREEK FIRE



For maps, evaluations, and IAPs Scan the QR Code!



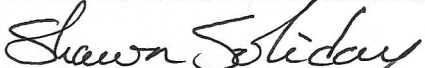
Thursday, June 27, 2024

0600-2000 Operational Period

WA-NES-000239

PN R09D (1522)

221-JNY

Incident Objectives	1. Incident Name Gold Creek	2. Date Prepared 6/26/2024	3. Time Prepared 1136
4. Operational Period (Date and Time) 6/27/2024 0600-2000			
5. General Control Objectives for the Incident (include Alternatives)			
<ul style="list-style-type: none"> • Provide for firefighter and public safety at all times. This includes the application of the "10 and 18", LCES, and the Risk Management Process. • Ensure structures and infrastructure are properly identified and mopped up around • Minimize acres burned. • Act professionally and in a manner that fosters good relationships with the public, private landowners, timber industry representatives, elected officials and other stakeholders. • Follow agency policies at all times and respect the policies of the host agency. • Maximize opportunities for cost savings without jeopardizing public or firefighter safety • Provide timely communications and accurate information as it becomes available. 			
6. Weather Forecast for Operational Period			
See attached weather forecast			
7. General Safety Message			
<ul style="list-style-type: none"> • Provide for firefighter and public safety at all times. • Monitor compliance of 10 and 18 by all incident personnel. • Adhere to 2:1 work/rest ratio for all fire line personnel. • Aviation safety is high priority. Assess the risk against the benefit of the mission. • Ensure all assigned personnel understand emergency medical reporting & transport procedures including locations of nearest emergency responders & facilities. 			
8. Attachments (check if attached)			
ICS-202	9. Prepared by (PSC) Paul Nelson	10. Approved by (IC) 	

ORGANIZATION ASSIGNMENT LIST			
1. Incident Name Gold Creek		9. OPERATIONS SECTION	
2. Date 6/26/2024	3. Time 2000	Planning	Greg Anderson (O-7.3)
4. Operational Period 6/27/2024 0600-2000		Field	Clint Desautel (O-7.2)
5. INCIDENT COMMANDER & STAFF		a. Division A	
Incident Commander	Shawn Soliday (O-7.1)	Division Sup	Keegan McCormick
		b. Division D	
Safety Officer	Daniel Garner (O-7.16)	Division Sup	Anders Johnson (O-14)
Information Officer (t)	Adam Micone (O-7.18)		
PIO Phone	509-690-02121	c. Division Z	
		Division Sup	Dylan Chester (C-3.1)
6. AGENCY REPRESENTATIVE		d. Division Structure	
Agency	Name	Division Sup	Jim Wheeler (t) (O-7.9)
FD6	Cody Accord		
DNR	Pat Ryan	e. Division Night	
USFS	Chris Furr	Division Sup	Jason Allen (local)
BLM	Curtis Bryan		
OK EMD	Maurice Goodall		
7. PLANNING SECTION			
PSC	Paul Nelson (O-7.10)		
PSC(t)	Brian Hansen (O-7.5)		
PSC (virtual)	Jessica Walston (O-7.19)		
GISS	Kat Russell (O-7.11)	10. FINANCE SECTION	
		Chief	Tina Paccereilli (O-7.14)
		PTRC	Emily Stewart (O-7.15)
Comms	Charles Barnes	INBA	Linda O'Neal (O-7.21)
		11. CONTACTS / OTHER INFORMATION	
8. LOGISTICS SECTION		CWICC 509-884-3473	
Chief	Matt Lougy (O-7.12)	wacwc@firenet.gov	
Chief(t)	Cole Shirley (O-7.13)		
Chief(t)	Jennifer Thompson (O-27)		
		Prepared by (Resource Unit Leader)	
		Jessica Walston	

DIVISION ASSIGNMENT LIST			1. Branch	2. Division / Group			
3. Incident Name Gold Creek			4. Operational Period Date: 6/27/2024 Time: 0600-2000				
5. Operations Personnel							
Operations Chief		<i>Clint Desautel (O-7.2)</i>					
Safety Officer		<i>Daniel Garner (O-7.16)</i>		Division/Group Supervisor		<i>Keegan McCormick</i>	
6. Resources Assigned this Period							
RO #	Strike Team/Task Force/Resource	Leader	# People	Contact (phone, radio freq, etc.)	EMT	LWD	Remarks
C-3	CR21 - NW - NES - NORTH COLUMBIA - DNR	ERIC OLSEN	20				
O-28	HEQB	ORTEGA, ENRIQUE	1				
O-29	HEQB	RAY, ASA WILLIAM	1				
O-30	HEQB	BRANDON HUMPHERYS	1				
O-31	HEQB	WYATT BREEZEE	1				
E-22	EXC2 - TOLLEFSON CONSTRUCTION- 41903		2				
E-21	SKG3 - DARRELL GREEN - 553667		2				
O-16	LINE SAFETY	LARRY WELSH	1				
O-17	PARAMEDIC, FIRELINE	THUERINGER, JOSEPH SANDER	1		P		Rem 9
O-18	EMERGENCY MEDICAL TECHNICIAN, FIRELINE	MILA DE LA ROCA GONZALEZ, OMAR RAFAEL	1		Y		Rem 9
			31				
7. Work Assignments							
Reinforce comntrol lines. Continue to mop up 300 feet around structures.							
8. Special Instructions							
DP1 will recieve 2 blivets by 0900. ALS Ambulance at DP 10 between A & Z							
9. Communication Summary							
Function	Name	Mode	Frequency				
COMMAND	TWISP	A	RX: 159.34500 Tone: 156.7 TX: 151.38500 Tone 118.8				
TACTICAL DIV A	VTAC11	A	RX: 151.1375 Tone 156.7 TX: 151.1375 Tone 156.7				
AIR TO GROUND	A/G Primary	A	RX: 167.95000 Tone: 0.0 TX: 167.95000 TX: 0.0				
AIR TO GROUND	A/G Secondary	A	RX: 169.20000 Tone: 0.0 TX: 169.20000 TX: 0.0				
Prepared by (RESL) Jessica Walston (O-7.19)		Approved by (PSC) Paul Nelson		Date: 6/26/2024	Time: 2300		

DIVISION ASSIGNMENT LIST			1. Branch		2. Division / Group		
3. Incident Name Gold Creek			4. Operational Period Date: 6/27/2024 Time: 0600-2000				
5. Operations Personnel							
Operations Chief		<i>Clint Desautel (O-7.2)</i>					
Safety Officer		<i>Daniel Garner (O-7.16)</i>		Division/Group Supervisor		<i>Anders Johnson (O-14)</i>	
6. Resources Assigned this Period							
RO #	Strike Team/Task Force/Resource	Leader	# People	Contact (phone, radio freq, etc.)	EMT	LWD	Remarks
C-2	CR21 - PATRICK ENVIRONMENTAL, INC. NCC 10A		20				
E-19	SKG4 - DARRELL GREEN - 031057		2				
O-12	EMERGENCY MEDICAL TECHNICIAN, FIRELINE	BRAULT, BRIAN RICHARD	1		Y		
			23				
7. Work Assignments							
Continue to build and reinforce line. As opportunities arise, start mop up. 300 feet around structures.							
8. Special Instructions							
ALS Ambulance at DP 10 between A & Z							
9. Communication Summary							
Function	Name	Mode	Frequency				
COMMAND	TWISP	A	RX: 159.34500 Tone: 156.7 TX: 151.38500 Tone 118.8				
TACTICAL DIV D	VTAC12	A	RX: 154.4525 Tone 156.7 TX: 154.4525 Tone 156.7				
AIR TO GROUND	A/G Primary	A	RX: 167.95000 Tone: 0.0 TX: 167.95000 TX: 0.0				
AIR TO GROUND	A/G Secondary	A	RX: 169.20000 Tone: 0.0 TX: 169.20000 TX: 0.0				
Prepared by (RESL) Jessica Walston (O-7.19)			Approved by (PSC) Paul Nelson			Date: 6/26/2024	Time: 2300

DIVISION ASSIGNMENT LIST		1. Branch	2. Division / Group				
3. Incident Name Gold Creek		4. Operational Period Date: 6/27/2024 Time: 0600-2000					
5. Operations Personnel							
Operations Chief		<i>Clint Desautel (O-7.2)</i>					
Safety Officer		<i>Daniel Garner (O-7.16)</i>		Division/Group Supervisor		<i>Dylan Chester (C-3.1)</i>	
6. Resources Assigned this Period							
RO #	Strike Team/Task Force/Resource	Leader	# People	Contact (phone, radio freq, etc.)	EMT	LWD	Remarks
C-5	CR21 - NORTH PACIFIC FORESTRY INC NCC 10B	THAD KING	20				
C-6	CRW2 - NW - MHF - DEVIL'S RIDGE - CREW 12	CARSON KERR	18				
E-2	WTS2 -828300	KEITH HIATT	1				
E-15	DZR3 - B00698	DARRELL GREEN	1				
O-7.7	HEQB	TRENTON BARIBAULT	1				
E-11	AERO METHOW BLS AMBULA TYPE4	NINA RAVENSTEIN	2		Y		
			23				
7. Work Assignments							
Continue to mop up 50 ft and reinforce line. As opportunities arise, start mop up. 300 feet around structures.							
8. Special Instructions							
ALS Ambulance at DP 1 between A & Z							
9. Communication Summary							
Function	Name	Mode	Frequency				
COMMAND	TWISP	A	RX: 159.34500 Tone 156.7 TX: 151.38500 Tone 118.8				
TACTICAL DIV Z	VTAC13	A	RX: 158.7375 Tone 156.7 TX: 158.7375 Tone 156.7				
AIR TO GROUND	A/G Primary	A	RX: 167.95000 Tone: 0.0 TX: 167.95000 TX: 0.0				
AIR TO GROUND	A/G Secondary	A	RX: 169.20000 Tone: 0.0 TX: 169.20000 TX: 0.0				
Prepared by (RESL) Jessica Walston (O-7.19)		Approved by (PSC) Paul Nelson		Date: 6/26/2024	Time: 2300		

DIVISION ASSIGNMENT LIST			1. Branch	2. Division / Group	Structure		
3. Incident Name Gold Creek			4. Operational Period Date: 6/27/2024 Time: 0600-2000				
5. Operations Personnel							
Operations Chief		<i>Clint Desautel (O-7.2)</i>					
Safety Officer		<i>Daniel Garner (O-7.16)</i>		Division/Group Supervisor		<i>Jim Wheeler (t) (O-7.9)</i>	
6. Resources Assigned this Period							
RO #	Strike Team/Task Force/Resource	Leader	# People	Contact (phone, radio freq, etc.)	EMT	LWD	Remarks
C-1	93-105443 (1) ALTA PACIFIC FIRE FIGHTING LLC.		20				
LOL	ENG 7204		3				
LOL	ENG 7203		3				
LOL	ENG 7101		3				
LOL	ENG 7102		3				
LOL	ENG 7201		3				
E-13	ENG6 - TURNBULL - E562	CHRISTIAN BUETTNER	4				
E-16	WTS - 077186	ANDRE CIAIS	1				
			20				
7. Work Assignments							
A/Z Break and mop up 300 feet around structures							
8. Special Instructions							
9. Communication Summary							
Function	Name	Mode	Frequency				
COMMAND	TWISP	A	RX: 159.34500 Tone: 156.7 TX: 151.38500 Tone 118.8				
TACTICAL	WA REDNT	A	RX: 153.8300 Tone 0.0 TX: 153.8300 Tone 0.0				
AIR TO GROUND	A/G Primary	A	RX: 167.95000 Tone: 0.0 TX: 167.95000 TX: 0.0				
AIR TO GROUND	A/G Secondary	A	RX: 169.20000 Tone: 0.0 TX: 169.20000 TX: 0.0				
Prepared by (RESL) Jessica Walston (O-7.19)		Approved by (PSC) Paul Nelson			Date: 6/26/2024	Time: 2300	

IAP

Gold Creek
WANES000239
6/27/2024 Day

278 acres at 6/25/2024 2100



0 0.13 0.25
Miles



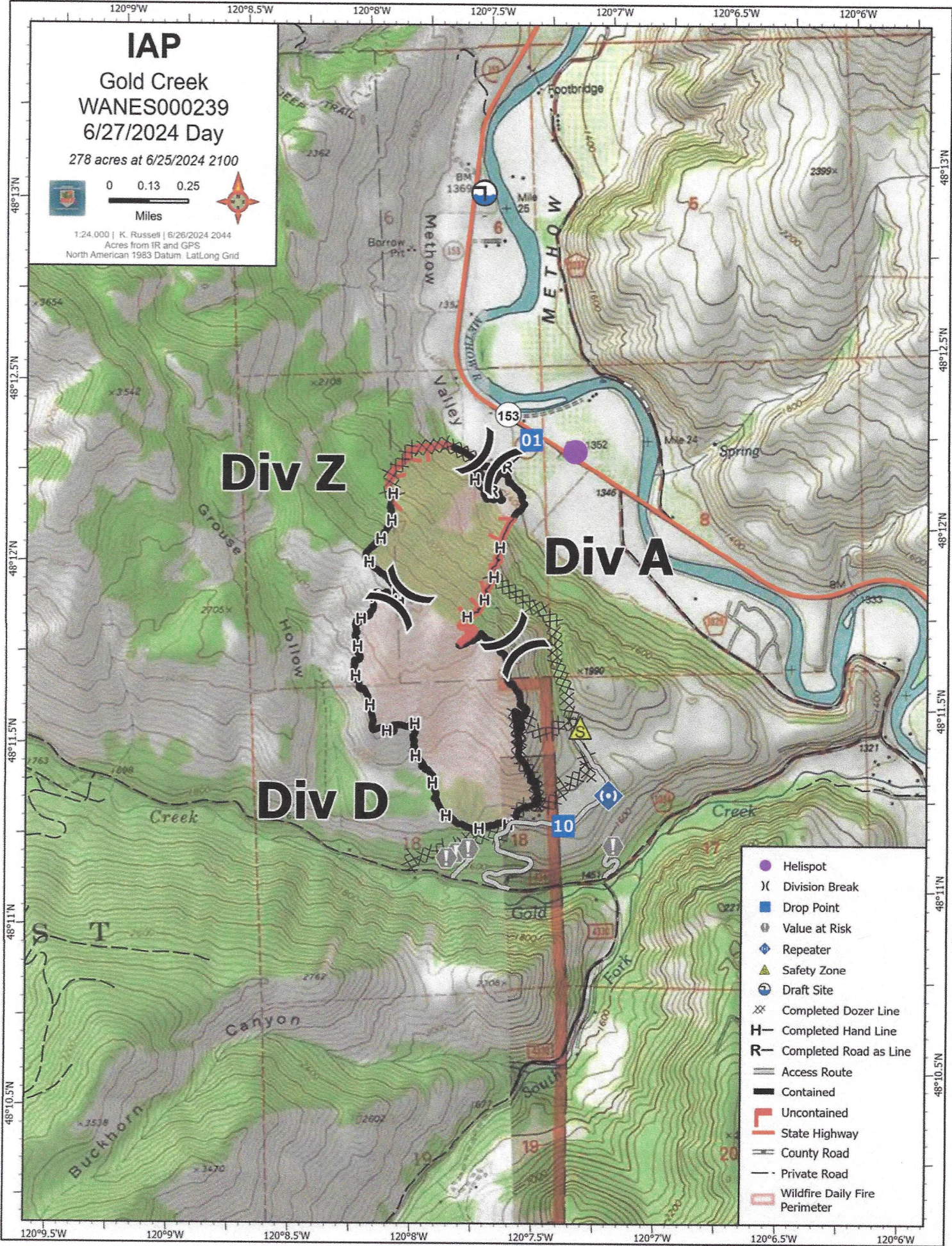
1:24,000 | K. Russell | 6/26/2024 2044
Acres from IR and GPS
North American 1983 Datum LatLong Grid

Div Z

Div A

Div D

- Helispot
- ⌵ Division Break
- Drop Point
- ⊕ Value at Risk
- ⬠ Repeater
- ▲ Safety Zone
- ⊕ Draft Site
- ⊗ Completed Dozer Line
- H Completed Hand Line
- R Completed Road as Line
- Access Route
- ▬ Contained
- ▬ Uncontained
- ▬ State Highway
- ▬ County Road
- ▬ Private Road
- ▭ Wildfire Daily Fire Perimeter



WA DNR Mop-Up/Suppression Repair expectations

These standards may be adjusted and modified as the incident progresses, but are intended to give the IMT direction for planning. A map and associated shape files will be produced prior to any transfer of command. This will detail all work completed and future work needed to meet objectives

Mop-Up Specifications

Always consider over-head hazards prior to putting fire fighters potentially in harm's way for mop up. Mitigate hazards and exposure as needed.

Achieve 100% mop-up along and inside the fire perimeter to a distance that is adequate to ensure the perimeter is secure to prevent the fire from escaping across existing containment lines.

To reduce hazards to firefighters during final mop-up, mitigate all snags that pose "imminent" danger along all open roads within the fire perimeter.

Known spot fires outside the control lines will be 100% mopped up where appropriate to do so, a route to them will be flagged, and the perimeter of spots mapped in GIS.

Mop-up of partially burned areas further inside the lines will be determined on a case-by-case basis.

For structures and sensitive resources within the interior of the fire line, mop-up to a level to ensure that there will be no future effects from the fire.

As mop-up specifications are met on the incident, Operations will develop a plan for resources and equipment to be staged if they may be required for future operations.

Mop-up will be verified by infrared equipment and/or gridded.

Notify Agency Representative if a cultural site is found during mop-up.

Suppression Repair Specifications

All Tractor and Hand Lines

- Place water bars on tractor and hand lines with the following spacing guidelines:
 - 6-9% slope - maximum of 300' apart
 - 10-15% slope - maximum of 200' apart
 - 15-25% slope – maximum of 100' apart
 - 25% to 45% slope – maximum of 50' apart
 - Greater than 45% slope – every 25-50'
- **Spacing distances above should only be used as a guide. Use judgment in locating water bars to minimize soil erosion potential.
- Pull soil, litter, duff and debris removed from the fire line back onto the line to cover non fire perimeter hand lines.
- Flatten large berms on all fire lines.
- Leave all freshly fallen trees as they lay. Do not limb or buck.
- Fire lines through damp or wet areas/riparian zones need to be rehabbed by hand if possible, or by the lightest equipment possible, with the least number of stream crossings. If damage is minimal, consider the possibility of not doing additional work.
- Block road access to hand and dozer lines to discourage recreational use. Attempt to visually obscure junction of line and road and make travel on first section very inconvenient (i.e. it will be too much trouble to access the line to be worth it, especially for motorcycles).
- Disperse large concentrations of unburned fuels created during suppression efforts
- Primary Containment lines may be repaired only after mop up is completed and verified by infrared equipment and gridding operations have not found any smokes for 3 shifts.

General Rehabilitation Concerns

- Identify and inventory fences, signs, and other improvements damaged by the incident.
- Repair road damage incurred during incident suppression.
- Remove garbage, litter, etc, from control lines, roads, drop points, and staging areas and dispose off-site.
- Signs/flagging removal: All signs and flagging will be removed from fire lines, roads, drop points, staging areas, camps, and water chances.

Spot Forecast for GOLD CREEK...WA DNR
National Weather Service Spokane WA
647 PM PDT Wed Jun 26 2024

Forecast is based on forecast start time of 1900 PDT on June 26.
If conditions become unrepresentative...contact the National Weather Service.

.DISCUSSION...

Breezy northwest winds and cooler on Thursday. Winds are expected to gusts up to around 20 mph in the afternoon. There will be a 20-30 percent chance for showers through the day as well. Higher pressure will build in on Friday with diurnally driven winds switching from the east. This will start a warming and drying trend into the weekend.

.THURSDAY...

Sky/weather.....Partly sunny. A 20 percent chance for rain showers in the morning increasing to 30 percent chance for showers in the afternoon.
CWR.....5 percent.
LAL.....1.
Max temperature.....65-67.
Min humidity.....41 percent.
Wind (20 ft).....Northwest winds 4 to 7 mph increasing to 7 11 mph after 1300 PDT. Gusts up to 21 mph in the afternoon.
Mixing height.....Increasing to 6000 ft AGL in the afternoon.
Transport winds.....Northwest 16 to 19 mph.
Haines Index.....2 Very Low.

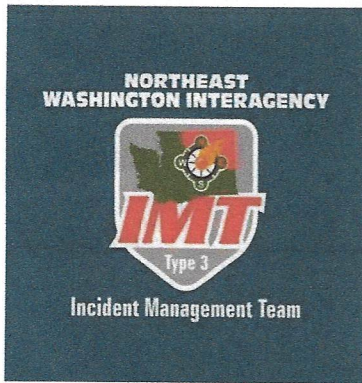
.THURSDAY NIGHT...

Sky/weather.....Mostly clear.
CWR.....0 percent.
LAL.....1.
Min temperature.....Around 48.
Max humidity.....67 percent.
Wind (20 ft).....Northwest winds 6 to 9 mph in the evening and overnight. Winds becoming light after 0300 PDT. Gusts up to 21 mph in the evening.
Mixing height.....4500 ft AGL falling to 1000 ft AGL.
Transport winds.....Northwest 14 to 20 mph decreasing to 8 to 12 mph after midnight.
Haines Index.....2 Very Low.

.FRIDAY...

Sky/weather.....Mostly sunny.
CWR.....0 percent.
LAL.....1.
Max temperature.....75-77.
Min humidity.....29 percent.
Wind (20 ft).....Southeast winds 5 to 7 mph.
Mixing height.....Increasing to 7500 ft AGL in the afternoon.
Transport winds.....Northeast around 8 mph in the morning shifting to the southeast in the afternoon.
Haines Index.....2 Very Low.

INCIDENT RADIO COMMUNICATIONS PLAN I-205			1. INCIDENT NAME		2. DATE/TIME PREPARED		3. OPERATIONAL PERIOD DATE/TIME				
Gold Creek			06/24/2024 1705 hrs		06/24/2024 All Shifts Until Further Notice						
4. BASIC RADIO CHANNEL UTILIZATION											
Ch #	Function	Channel Name	Assignment	RX Freq	NW	RX Tone/NAC	TX Freq	N/W	TX Tone/NAC	Mode Analog (A) Digital (D) Mixed (M)	Remarks
1	Tactical	VTAC11	DIV A	151.1375	N	156.7	151.1375	N	156.7	A	DIVISION A
2	Tactical	VTAC12	DIV D	154.4525	N	156.7	154.4525	N	156.7	A	DIVISION D
3	Tactical	VTAC13	DIV Z	158.7375	N	156.7	158.7375	N	156.7	A	DIVISION Z
4	Tactical	DNR COM	DIV	151.415	N	103.5	151.415	N	103.5	A	NOT IN USE - FUTURE USE
5	Tactical	WA REDNT	DIV	153.8300	N		153.8300	N		A	STRUCTURE GROUP
6	Command	TWISP	CMD PRI	159.34500	N	156.7	151.38500	N	118.8	A	PRIMARY - CWIC COMMAND + IWI
7	Command	BREWSTER	CMD SEC	159.43500	N	123.0	151.24250	N	123.0	A	SECONDARY - CWIC COMMAND
8	Command	FS GOAT	CMD SEC	172.35000	N	146.2	165.01250	N	118.8	A	SECONDARY - NEWICC COMMAND
9	Command	REPEATER 2A	CMD TAC	159.42750	N	192.8	151.27250	N	192.8	A	Tactical Repeater - Gold Creek
10	Command	A/G Primary	A/G	167.95000	N		167.95000	N		A	NIFC A/G
11	Command	A/G Secondary	A/G	169.20000	N		169.20000	N		A	NIFC A/G
12	UNASSIGNED	BLANK									UNASSIGNED
13	UNASSIGNED	BLANK									UNASSIGNED
14	MEDICAL A/G	VMED 28	A/G	155.34000	N		155.34000	N	156.7	A	A/G use with Air Ambulance Pri
15	MEDICAL A/G	VMED 29	A/G	155.34750	N		155.34750	N	156.7	A	A/G use with Air Ambulance Sec
16	AIRGUARD	AIRGUARD	EMERGENCY	168.62500	N		168.62500	N	110.9	A	EMERGENCY USE
5. Special Instructions:											
6. I-205 Prepared By: Communications Unit Leader						Name: Charles Barnes			Signature: Charles Barnes		



Gold Creek Fire

NE

WA IMT #3



Briefing

0600 - Day Shift Briefing - Weber

Meal Times

Breakfast - 0530 - 0800

Dinner - 1900 - 2100

Showers

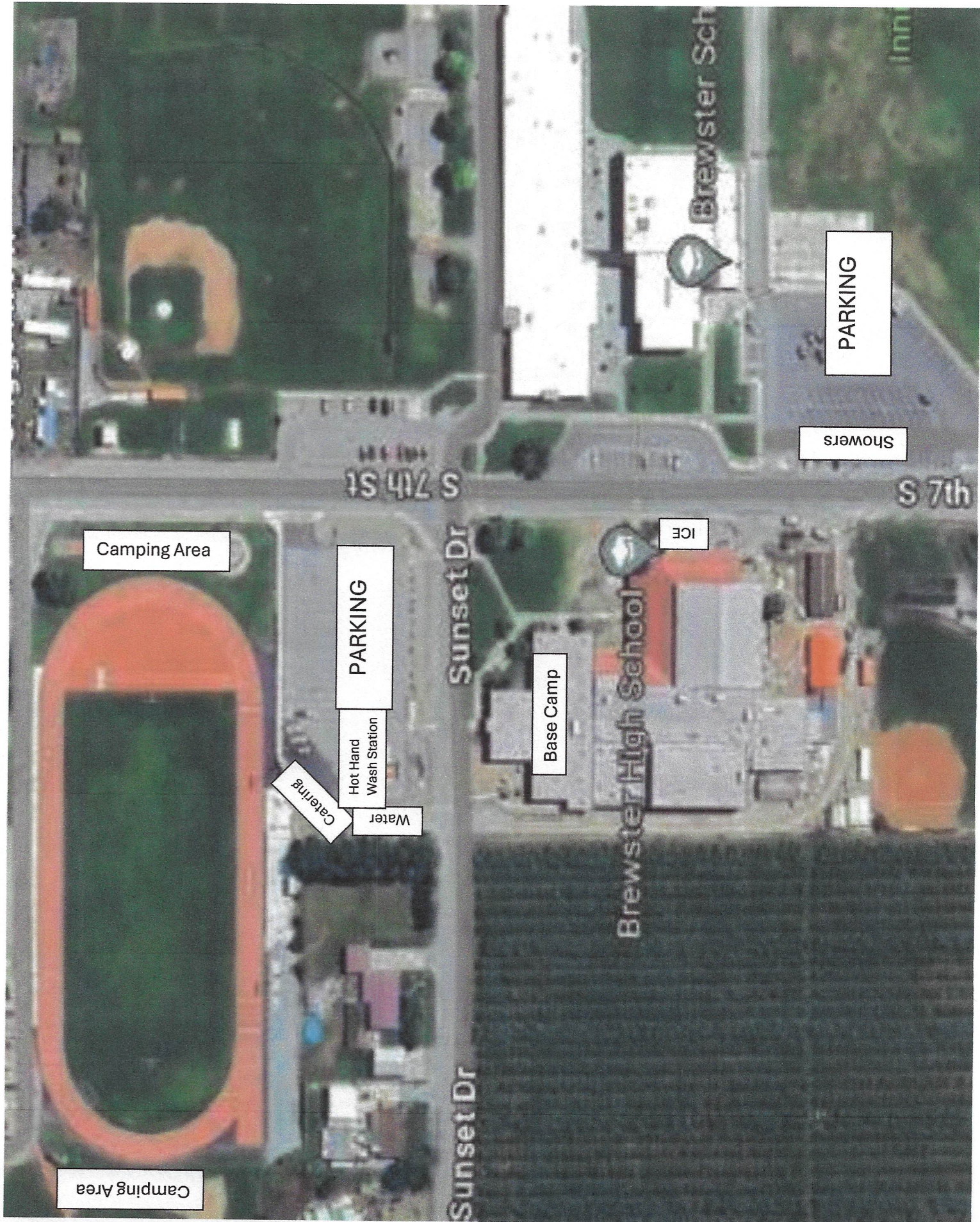
0500-1100

1400-2200

Please see the map for parking and other camp information. It can change daily.

General Messages: include contact with phone number, very detailed, and write clearly

No supply unit or ground support - See Logs for any needs



Camping Area

PARKING

Catering

Hot Hand Wash Station

Water

Base Camp

ICE

PARKING

Showers

Camping Area

Sunset Dr

S 7th St

S 7th

Brewster Sch

Brewster High School

RO #	Name	Type	Demob Date	Demob Time
C-4	CR2I - NW - NES - HIGHLANDS - DNR	CR2I	6/27	0700
E-1	WTS2 - CIAIS, ANDRE - 268610	WTS2	6/27	0730
E-20	ENG6 - STCN 11 - B11-14 - Beer	ENG6	6/27	0750
O-8	FMOD - FALLER MODULE - PICOLET PAUL - DULE 1 - FALLER	FMOD	6/27	0810
O-9	FMOD - FALLER MODULE - SWEDBERG CONTRACTING CORP. - WC	FMOD	6/27	0830
O-7.17	GIFFORD III, GUY CHARLES	PIO3	6/27	Noon

Safety Message

Incident:
Gold Creek

Date:
June 27, 2024

Time:
Day Shift

Major Hazard and Risk:

Snags! Snags! Snags!
Very Steep Rocky Terrain

Implement LCES prior to operational engagement.

Snags! Stay well clear of snags, including well downhill of them.

Heavy Equipment: Stay well clear, especially downhill.

Very Steep Terrain w/lots of rolling debris.

Heavy Lifting: Lift with your legs, lighten the load and/or ask for help.

Mop-up/Watch for stump holes.

Prevent Illnesses: Wash Your Hands, Wash Your Hands, Wash Your Hands!!!

Review the Medical Plan, BEFORE you need it.

Drive safely, Always obey speed limits, Everyone wears a seatbelt, Driver does not use cell phone while driving, If you get sleepy-pull over and rest.

IT IS NOT OVER UNTIL YOU GET HOME OR TO YOUR NEXT FIRE!!!

1. Incident/Project Name	2. Operational Period
Gold Creek	6/27/24 Day Shift

3. Ambulance Services				
Name	Complete Address	Phone & EMS Frequency	Advanced Life Support (ALS)	
Aero Methow Rescue Service	Twisp, Winthrop, Mazama, WA	911-509-997-4013	<input checked="" type="checkbox"/> Yes	<input type="checkbox"/> No
Lifeline Ambulance	Oroville, Tonasket, Omak, WA	911-509-663-8091	<input checked="" type="checkbox"/> Yes	<input type="checkbox"/> No
Okanagan/Douglas Co FD 15	Brewster, WA	911-509-689-4041	<input type="checkbox"/> Yes	<input checked="" type="checkbox"/> No
			<input type="checkbox"/> Yes	<input type="checkbox"/> No

4. Air Ambulance Services		
Name	Phone	Type of Aircraft & Capability
Lifeflight Network, Spokane, WA	Call CWICC / 800-232-0911	Advanced Life Support
Fairchild AFB, Airway Heights, WA	Call CWICC / 509-247-4051	Advanced Life Support
Spokane County Sheriff	Call CCC/509-532-8900	Short haul rotor, can transport medic to the scene.
Airlift NW	Call CWICC/509-800-426-2430	Advanced Life Support

5. Hospitals							
Name Complete Address	GPS Datum – WGS 84 Coordinate Standard Degrees Decimal Minutes DD° MM.MMM' N - Lat DD° MM.MMM' W - Long		Travel Time Air Gnd	Phone	Helipad		Level of Care Facility
	Lat:	Long:			VHF:	<input type="checkbox"/> Yes	
Coulee Community Hospital, , 411 Fortuyn Rd. Grand Coulee, WA	Lat:			509-633-1753	<input type="checkbox"/> Yes	<input checked="" type="checkbox"/> No	
Mid Valley Hospital; 810 Jasmine Street; Omak, WA	Long:				<input type="checkbox"/> Yes	<input checked="" type="checkbox"/> No	Level 4 Trama Center
	VHF:						
	Lat:	N48 06.39			509-575-8000	<input checked="" type="checkbox"/> Yes	
Three Rivers Hospital; 507 Hospital Way; Brewster, WA	Long:	W119 46.91					Level 4 Trama Center
	VHF:						
	Lat:	N47 24.43			509-474-3131	<input checked="" type="checkbox"/> Yes	
Central Washington Hospital; 1201 S Miller St; Wenatchee, WA	Long:	W120 19.28					Level 3 Trama Center
	VHF:						
	Lat:	N47 38.95			509-474-3131	<input checked="" type="checkbox"/> Yes	
Providence Sacred Heart; 101 W 8th Ave.; Spokane, WA	Long:	W117 24.78					Level 2 Trama Center
	VHF:						
	Lat:	N47 36.1			206-744-3000	<input checked="" type="checkbox"/> Yes	
Harborview Medical Center; 325 9th Avenue, Seattle, WA	Long:	W121 19.3			206-744-3000		Level 1 Trama Center Burn Center
	VHF:				Emergency # 206-744-4074		
	Lat:	N47 36.1					

6. Division Branch		Area Location Capability	
<p>Identify crew EMTs on the line for each Division prior to engaging. In case of urgent situation, notify your supervisor and follow the MEDICAL INCIDENT REPORT "ICS 206" procedure on pages 108-109 in the 2014 IRPG. Notify operations of needs and location on command channel. Operations will notify NEWICC and base camp. Minimize radio traffic and maintain situational awareness.</p>			
	EMS Responders & Equipment Available on		
	Medical Emergency		
	ETA for Ambulance to		
	Air:		
	Ground:		
	Approved Helispot:		
	Lat:		
	Long:		
	EMS Responders & Equipment Available on		
	Medical Emergency		
	ETA for Ambulance to		
	Air:		
	Ground:		
	Approved Helispot:		
	Lat:		
	Long:		
7. Name & Location		Remote Camp Location(s)	
	Point of Contact:		
	EMS Responders & Equipment Available on		
	Medical Emergency Channel:		
	ETA for Ambulance to Scene:		
	Air:		
	Ground:		
	Approved Helispot:		
	Lat:		
Long:			
	Point of Contact:		
	EMS Responders & Equipment Available on		
	Medical Emergency Channel:		
	ETA for Ambulance to Scene:		
	Air:		
	Ground:		
	Approved Helispot:		
	Lat:		
Long:			
8. Prepared By (Medical Unit Leader)		9. Date/Time	10. Reviewed By (Safety Officer)
ICS 206 Medical Incident Report			

MEDICAL PLAN (ICS 206 WF)

Controlled Unclassified Information//Basic

Medical Incident Report

FOR A NON-EMERGENCY INCIDENT, WORK THROUGH CHAIN OF COMMAND TO REPORT AND TRANSPORT INJURED PERSONNEL AS NECESSARY.

FOR A MEDICAL EMERGENCY: IDENTIFY ON SCENE INCIDENT COMMANDER BY NAME AND POSITION AND ANNOUNCE "MEDICAL EMERGENCY" TO INITIATE RESPONSE FROM IMT COMMUNICATIONS/DISPATCH.

Use the following items to communicate situation to communications/dispatch.

1. CONTACT COMMUNICATIONS / DISPATCH (Verify correct frequency prior to starting report)

Ex: "Communications, Div. Alpha. Stand-by for Emergency Traffic."

2. INCIDENT STATUS: Provide incident summary (including number of patients) and command structure.

Ex: "Communications, I have a Red priority patient, unconscious, struck by a falling tree. Requesting air ambulance to Forest Road 1 at (Lat./Long.) This will be the Trout Meadow Medical, IC is TFLD Jones. EMT Smith is providing medical care."

Severity of Emergency / Transport Priority	<input type="checkbox"/> RED / PRIORITY 1 Life or limb threatening injury or illness. Evacuation need is IMMEDIATE <i>Ex: Unconscious, difficulty breathing, bleeding severely, 2° - 3° burns more than 4 palm sizes, heat stroke, disoriented.</i> <input type="checkbox"/> YELLOW / PRIORITY 2 Serious Injury or illness. Evacuation may be DELAYED if necessary. <i>Ex: Significant trauma, unable to walk, 2° - 3° burns not more than 1-3 palm sizes.</i> <input type="checkbox"/> GREEN / PRIORITY 3 Minor Injury or illness. Non-Emergency transport <i>Ex: Sprains, strains, minor heat-related illness.</i>	
Nature of Injury or Illness & Mechanism of Injury		Brief Summary of Injury or Illness <i>(Ex: Unconscious, Struck by Falling Tree)</i>
Transport Request		Air Ambulance / Short Haul/Hoist Ground Ambulance / Other
Patient Location		Descriptive Location & Lat. / Long. (WGS84)
Incident Name		Geographic Name + "Medical" <i>(Ex: Trout Meadow Medical)</i>
On-Scene Incident Commander		Name of on-scene IC of Incident within an Incident <i>(Ex: TFLD Jones)</i>
Patient Care		Name of Care Provider <i>(Ex: EMT Smith)</i>

3. INITIAL PATIENT ASSESSMENT: Complete this section for each patient as applicable (start with the most severe patient)

Patient Assessment: See IRPG page 106

Treatment:

4. TRANSPORT PLAN:

Evacuation Location (if different): (Descriptive Location (drop point, intersection, etc.) or Lat. / Long.) Patient's ETA to Evacuation Location:

Helispot / Extraction Site Size and Hazards:

5. ADDITIONAL RESOURCES / EQUIPMENT NEEDS:

Example: Paramedic/EMT, Crews, Immobilization Devices, AED, Oxygen, Trauma Bag, IV/Fluid(s), Splints, Rope rescue, Wheeled litter, HAZMAT, Extrication

6. COMMUNICATIONS: Identify State Air/Ground EMS Frequencies and Hospital Contacts as applicable

Function	Channel Name/Number	Receive (RX)	Tone/NAC *	Transmit (TX)	Tone/NAC *
COMMAND					
AIR-TO-GRND					
TACTICAL					

7. CONTINGENCY: Considerations: If primary options fail, what actions can be implemented in conjunction with primary evacuation method? Be thinking ahead.

8. ADDITIONAL INFORMATION: Updates/Changes, etc.

REMEMBER: Confirm ETA's of resources ordered. Act according to your level of training. Be Alert. Keep Calm. Think Clearly. Act Decisively.