

DAY

INCIDENT ACTION PLAN

GOOSMUS FIRE

WA-NES-002063



For maps, evaluations, and IAPs Scan the QR Code!



Tuesday, October 01, 2024
0600-2000 Operational Period

(Charge Codes)


AIY-221

PN R8Z0 (1522) [P]

STATE MOBILIZATION WA-WFS-521

State and Federal cost share breakdown

AIR	Daily	Approval	GROUND	Daily	Approval
DNR	%		DNR	%	
MOB	%		MOB	%	
BLM	%		BLM	%	

Incident Objectives	1. Incident Name GOOSMUS FIRE	2. Date Prepared 9/30/2024	3. Time Prepared 1200
4. Operational Period (Date and Time) 10/1/2024 0600-2000			
5. General Control Objectives for the Incident (include Alternatives) <ul style="list-style-type: none"> • Provide for the safety of firefighters and the public through utilization of strategic and deliberate risk assessment processes. Ensure incident within an incident protocols are established and understood by all. • Develop strategic plans to prioritize and protect identified values at risk to the surrounding private residences and communities. • Engage in transparent communication with agency administrators and local fire department officials, to ensure critical information is shared during the decision-making process. • Enhance relationships throughout the area through communication and active involvement with the stakeholders, including; residents, public agencies, community leaders, cooperators, and landowners. • Maintain fiscal accountability of the incident while supporting the needs of the host agencies and the community. • Assist in initial attack and support as requested by the host agencies while maintaining communication and coordination. 			
6. Weather Forecast for Operational Period See attached weather forecast			
7. General Safety Message <ul style="list-style-type: none"> • Provide for firefighter and public safety at all times. • Monitor compliance of 10 and 18 by all incident personnel. • Adhere to 2:1 work/rest ratio for all fire line personnel. • Aviation safety is high priority. Assess the risk against the benefit of the mission. • Ensure all assigned personnel understand emergency medical reporting & transport procedures including locations of nearest emergency responders & facilities. 			
8. Attachments (check if attached)			
ICS-202	9. Prepared by (PSC) Dusty Patrick	10. Approved by (IC) 	

ORGANIZATION ASSIGNMENT LIST			
1. Incident Name		GOOSMUS FIRE	
2. Date Prepared		9/30/2024	3. Time 1200
4. Operational Period		10/1/2024	0600-2000
5. INCIDENT COMMANDER & STAFF			9. LOGISTICS SECTION
Incident Commander	Andrew Stenbeck (O-1.1)		Logs Chief
Safety Officer	Reed Heckly (O-23)		Mike Bucy (O-1.12)
Safety Officer	Mark Knokey (O-51)		Logs Chief (t)
MEDL	Mary Andersen (O-16)		Jennifer Thompson (O-1.13)
MEDL (t)	Dan Garner (O-24)		Logs Chief (t)
PIO	Isabelle Hoygaard-Reeser (O-1.16)		Auora Bernard (O-44)
PIO (t)	Jessa Lewis (O-45)		BCMG
			James Daeschler (O-1.18)
			BCMG (t)
			Aaron Culp (O-1.14)
			10. OPERATIONS SECTION
			Field
			Aaron Coe (O-1.2)
			Planning
			Brian Hansen (O-46)
			a. Division A
6. AGENCY REPRESENTATIVE			DIVS
			Timothy Cawley-Murphee (O-43)
Agency	Name		DIVS (t)
BLM	Shevawn Sapp		Austin Hatten (O-1.5)
BLM	Michelle Brown		b. Division H
WA DNR	Pat Ryan		DIVS (t)
WA DNR	Brett Walker		Brock Schuh (O-1.3)
WA DNR	Kyle Pomrankey		c. Division W
WSP	Brian Briscoe		DIVS
Ferry County Sheriff	Ray Maycumber		Daniel Montano (O-1.4)
Ferry Fire Chief Dist 13	Eric Hewitt		c. Division NIGHT
Ferry Fire Chief Dist 14	John Porter		DIVS
DEM	Steve Bonner		Jim Wheeler (O-50)
7. PLANNING SECTION			11. FINANCE SECTION
Planning Chief	Dusty Patrick (O-1.6)		FSC
RESL	Jessica Walston (v) (O-1.7)		Michelle Leonard (O-1.11)
SITL (t)	Eric Krausz (O-1.8)		FSC
GISS	Rose Beaton (v) (O-31)		Marcy Johnson (O-1.10)
			EQRT
			Sharleen Puckett (O-1.17)
			PTRC (t)
			Walt Seidel (O-13)
			12. CONTACTS / OTHER INFORMATION
8. COMMUNICATIONS			NEWICC (509) 685-6900
INCM	Jeff Smetzler (E-15.1)		Spokane Valley Comms: 509-389-2002
RADO	John Nelson (E-15.3)		Spot Weather: 541-276-4493
RADO (t)	Glen Schade (O-49)		
COMT	Robert Leaming (E-15.2)		
COMT	Kevin Judd (O-32)		
Prepared by:			
Dusty Patrick PSC3			

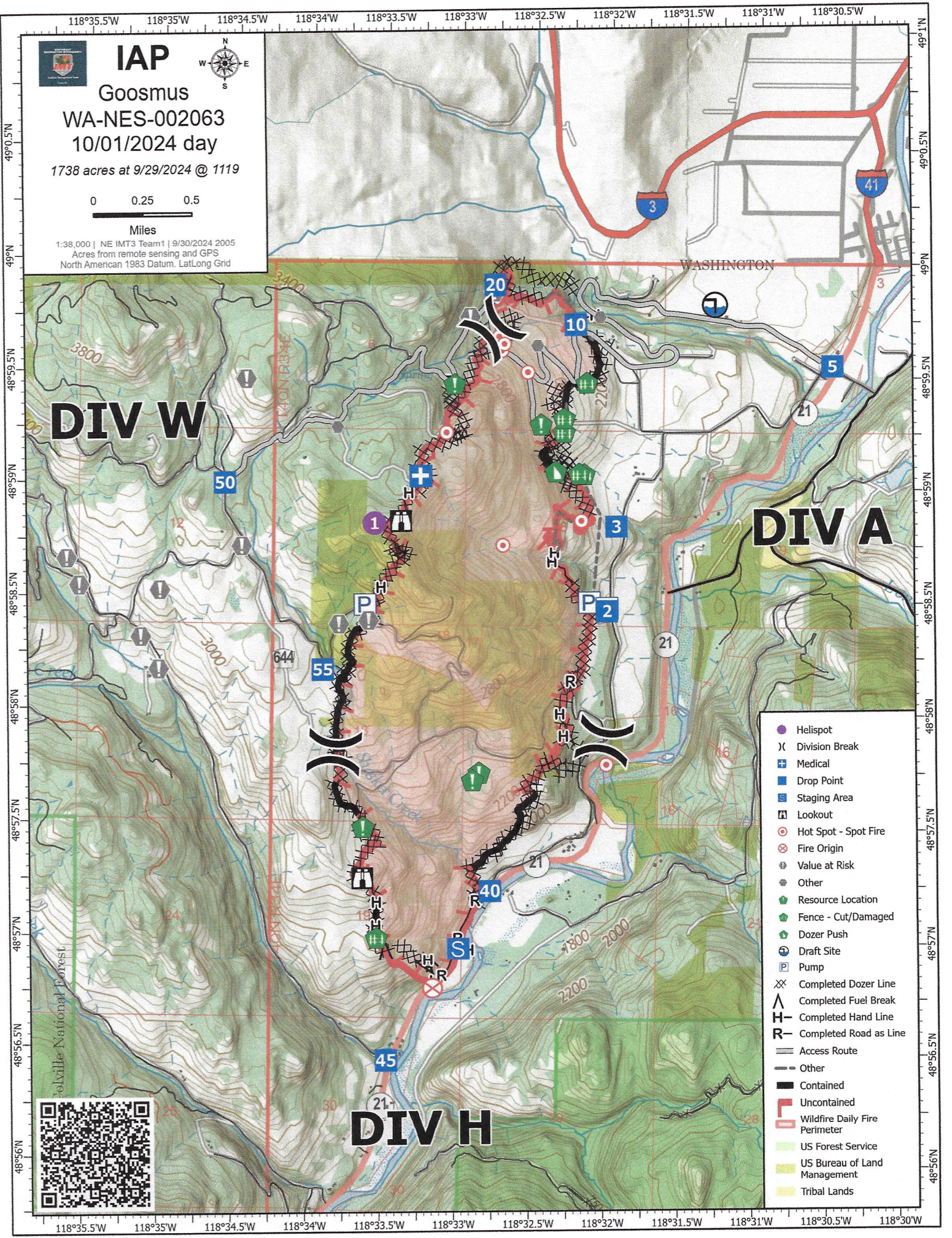
DIVISION ASSIGNMENT LIST			1. Branch		2. Division / Group			Page 1 of 2		A
3. Incident Name GOOSMUS FIRE				4. Operational Period Date: 10/1/2024 Time: 0600-2000						
5. Operations Personnel										
Operations Chief		Aaron Coe (O-1.2)			Division/Group Supervisor			Timothy Cawley-Murphee (O-43)		
Safety Officer		Reed Heckly (O-23) & Mark Knokey (O-51)						Austin Hatten (O-1.5)		
6. Resources Assigned this Period										
RO #	Strike Team/Task Force/Resource	Leader	# People	Contact (phone, radio freq, etc.)	EMT	LWD	Remarks			
C-8.1	TFLD	Dylan Chester	1			10/10				
C-8	CR21 - NW - NES - NORTH COLUMBIA - DNR	Eric Olsen	20			10/10				
C-10	CR21 - VALHALLA CANADIAN CREW		14		3					
C-11	CR21 - SENTINEL UC - CANADIAN CREW		12		3					
O-2	STEB	David Way	1			10/11				
O-3	STEN(t)	Tanner Stemkoski	1			10/10				
E-3	ENG5 - 2204 - WA-PCS	Nathan Jurgensen	3		1	10/10				
E-4	ENG5 - 2405 - WA-PCS	Travis Pakenen	4		1	10/10				
E-5	ENG5 - 5302 - WA-NWS	Chad Bowman	4			10/10				
E-6	ENG5 - E8201 - WA-SPS	Myles Reed	4		1	10/9				
E-7	ENG5 - ENGINE 1301 - WAOLS (WA-OLS-E5X-1301)	Morgan Reisdorfer	4		1	10/10				
O-2116	STL - WALLA WALLA	Shawn Ongers	1	509-386-3900		10/12				
E-2117	ENG4 - WALLA WALLA	Derick Schoessler	2		2	10/12				
E-2118	ENG4 - BENTON 4	Manuel Estrella	2	509-619-4086		10/12				
E-2119	ENG5 - WALLA WALLA 4	Ryan Chase	2		2	10/11				
E-2120	ENG5 - WEST BENTON	William Petersen	2			10/11				
E-2122	WTS2 - WALLA WALLA 8	Tim Daves	1		1	10/11				
O-6	FMOD - NEWMAN BEN A	Ben Newman	2			10/11				
O-7	FELB	John Walker	1			10/12				
			81		15					
7. Work Assignments										
Identify and mitigate spot fires on north end of division Secure containment line along timbered draw west of upper Danville Road Continue 50' mop up Begin gridding to confirm containment lines										
AMBO 2 staged at DP 5 (Post Office)										
9. Communication Summary										
Function	Name	Mode	RX FREQ	N/W	RX TONE/NAC	TX FREQ	N/W	TX TONE/NAC		
PRIMARY COMMAND	CMD 2	A	154.5275	N	186.2	158.4	N	186.2		
NIGHT SHIFT COMMAND	REPUBLIC	A	159.36	N	118.8	151.235	N	118.8		
FERRY COUNTY DISPATCH	FY14REPT	A	153.845	N	91.5	158.805	N	103.5		
DIVISION A	SILVER	A	163.89	N	0	163.89	N	0		
STRUCTURE	TAC 8	A	151.7	N	186.2	151.7	N	186.2		
A/G FIXED	A/G 1	A	167.8375	N	0	167.8375	N	156.7		
A/G ROTOR	A/G 2	A	169.15	N	0	169.15	N	203.5		
AIRGUARD	AIRGUARD	A	168.625	N	0	168.625	N	110.9		
Prepared by RESL(t) Jessica Walston			Approved by (PSC) Dusty Patrick			Date: 9/30/2024		Time: 1430		


DIVISION ASSIGNMENT LIST			1. Branch		2. Division / Group Page 2 of 2		A		
3. Incident Name GOOSMUS FIRE			4. Operational Period Date: 10/1/2024 Time: 0600-2000						
5. Operations Personnel									
Operations Chief		<i>Aaron Coe (O-1.2)</i>		Division/Group Supervisor		<i>Timothy Cawley-Murphee (O-43)</i>			
Safety Officer		<i>Reed Heckly (O-23) & Mark Knokey (O-51)</i>				<i>Austin Hatten (O-1.5)</i>			
6. Resources Assigned this Period									
RO #	Strike Team/Task Force/Resource	Leader	# People	Contact (phone, radio freq, etc.)	EMT	LWD	Remarks		
O-2101	STL - SNO. 22	Travis Hots	1			10/11			
O-2108	STL(t) - NORTH SNOHOMISH RFA	Keith Johnson	1			10/10			
E-2102	ENG3 - SNO. 26	Shane Roeder	3		3	10/11			
E-2103	ENG3 - SNO. 22	Jim Bansbach	2		2	10/11			
E-2104	ENGS6 - SNO. 22	Robert White	2		2	10/11			
E-2105	ENG3 - SNO. 16	Scott Anderson	3		3	10/11			
E-2107	WTS2 - WHATCOM 14	Cameron Clark	1			10/10			
LOL	ENG - 621	Savannah Stranger	3		1	10/1			
E-38	SKG3 - DARRELL GREEN - 553667	Scott Shinall	2	425-445-6603		10/12			
O-8	HEQB	Michael Correia	1			10/13			
E-2	DZR3 - PARADIGM INDUSTRIES LLC - A29862	JT Mcelhose	1			10/9			
E-17	WTS2 - SC RIVER LAND MANAGEMENT SOLUTIONS, LLC - 93-102370	TIM SCRIVER	1			10/10			
E-34	AMBO 2 - PECN 2	Beth Osgood	2	509-710-0472		10/11			
			23		11				
7. Work Assignments									
Identify and mitigate spot fires on north end of division Secure containment line along timbered draw west of upper Danville Road Continue 50' mop up Begin gridding to confirm containment lines									
8. Special Instructions									
AMBO 2 staged at DP 5 (Post Office)									
9. Communication Summary									
Function	Name	Mode	RX FREQ	N/W	RX TONE/NAC	TX FREQ	N/W	TX TONE/NAC	
PRIMARY COMMAND	CMD 2	A	154.5275	N	186.2	158.4	N	186.2	
NIGHT SHIFT COMMAND	REPUBLIC	A	159.36	N	118.8	151.235	N	118.8	
FERRY COUNTY DISPATCH	FY14REPT	A	153.845	N	91.5	158.805	N	103.5	
DIVISION A	SILVER	A	163.89	N	0	163.89	N	0	
STRUCTURE	TAC 8	A	151.7	N	186.2	151.7	N	186.2	
A/G FIXED	A/G 1	A	167.8375	N	0	167.8375	N	156.7	
A/G ROTOR	A/G 2	A	169.15	N	0	169.15	N	203.5	
AIRGUARD	AIRGUARD	A	168.625	N	0	168.625	N	110.9	
Prepared by RESL(t) Jessica Walston			Approved by (PSC) Dusty Patrick			Date: 9/30/2024		Time: 1430	

DIVISION ASSIGNMENT LIST			1. Branch		2. Division / Group Page 1 of 1				H
3. Incident Name GOOSMUS FIRE			4. Operational Period Date: 10/1/2024 Time: 0600-2000						
5. Operations Personnel									
Operations Chief		Aaron Coe (O-1.2)		Division/Group Supervisor		Brock Schuh (O-1.3)			
Safety Officer		Reed Heckly (O-23) & Mark Knokey (O-51)							
6. Resources Assigned this Period									
RO #	Strike Team/Task Force/Resource	Leader	# People	Contact (phone, radio freq, etc.)	EMT	LWD	Remarks		
O-18	SMOD - LACAMAS HAND CREW	Jayne Morgan	8			10/12			
O-19	SMOD - PEAK IA MODULE	Cole Phelan	11			10/11			
O-33	SMOD - NEWAUKUM MODULE	Joshua White	11		1	10/12			
O-39	TFLD	Philip Shafto	1			10/12			
E-25	ENG6 - ALDER CREEK FIRE INC - B01948	Steve Ward	3			10/12			
E-40	ENG6 - THE GENERAL CONTRACTOR, LLC - B96605	Tom Adams	3			10/12			
E-42	ENG6 - METHOW RIVER WILD FIRE - 500915	Andy Dalton	3			10/12			
E-43	ENG6 - METHOW RIVER WILD FIRE - 150300	Leonardo Sanche	3			10/11			
E-16	ENG5 - AR 7401 - DNR	James Spencer	4		2	10/11			
E-45	WTS3 - CIAIS, ANDRE - 077186	Jeffery Echols	1			10/12			
O-53	Palm IR	Trenton Baribault	1			10/14			
			49		3				
7. Control Operations:									
Mop up 100' off primary containment lines Reduce/mitigate hazard trees for fire fighter and public safety Mop up visible smoke from HWY 21 Hand held IR 50' off all containment lines Minimize threat to values at risk									
8. Special Instructions									
9. Communication Summary									
Function	Name	Mode	Frequency						
PRIMARY COMMAND	CMD 2	A	154.5275	N	186.2	158.4	N	186.2	
NIGHT SHIFT COMMAND	REPUBLIC	A	159.36	N	118.8	151.235	N	118.8	
FERRY COUNTY DISPATCH	FY14REPT	A	153.845	N	91.5	158.805	N	103.5	
	DIVISION H	A	151.76	N	186.2	151.76	N	186.2	
	STRUCTURE	A	151.7	N	186.2	151.7	N	186.2	
	A/G FIXED	A	167.8375	N	0	167.8375	N	156.7	
	A/G ROTOR	A	169.15	N	0	169.15	N	203.5	
	AIRGUARD	A	168.625	N	0	168.625	N	110.9	
Prepared by RESL(t) Jessica Walston		Approved by (PSC) Dusty Patrick			Date: 9/30/2024		Time: 1430		

DIVISION ASSIGNMENT LIST			1. Branch		2. Division / Group Page 1 of 2				W	
3. Incident Name GOOSMUS FIRE			4. Operational Period Date: 10/1/2024 Time: 0600-2000							
5. Operations Personnel										
Operations Chief		Aaron Coe (O-1.2)			Division/Group Supervisor		Daniel Montano (O-1.4)			
Safety Officer		Reed Heckly (O-23) & Mark Knokey (O-51)								
6. Resources Assigned this Period										
RO #	Strike Team/Task Force/Resource	Leader	# People	Contact (phone, radio freq, etc.)	EMT	LWD	Remarks			
C-4	CR2I - SRV #12	Julian Jacobo	21			10/12				
C-5	CR2I - PatRick Environmental, Inc. NCC	Garth Chambers	20			10/12				
C-6	CR2I - DIAMOND FIRE NCC 11B	Larry Eckelman	20	530-515-9139		10/12				
C-9	CR2I - NW - NES - HIGHLANDS - DNR	Seth Schertenleib	21			10/11				
O-40	TFLD	Andrew Schaffran	1			10/12				
E-22	ENG6 - BAILEY ENTERPRISES, L.L.C. -	Greg Bailey	3			10/11				
E-23	ENG6 - BLACKSTONE FORESTRY LLC - B76286	Chad Sheets	3			10/11				
E-24	ENG6 - WILD FIRE SERVICES, INC - D10873	Mike Foster	3			10/11				
E-26	ENG6 - ALDER CREEK FIRE INC - E02096	Vitas Labanausk	3			10/12				
O-2109	CENTRAL STRIKE TEAM	Wes Long	1	509-637-5559		10/11				
E-2110	ENG6 - THURSTON 3	Scott Santhuff	2			10/12				
E-2111	ENG5 - HOQUAIM	John Phillips	2			10/12				
E-2112	ENG6 - MONTENSANO	Spencer Coleman	3			10/12				
E-2113	ENG6 - KITTITAS 1	Curtis Taylor	2			10/12				
E-2114	ENG6 - SNOHOMISH 21	Mason Anderson	2	360-435-3331		10/12				
E-2115	WTS2 - W. THURSTON	Colby Lyon	1			10/12				
			108		0					
7. Control Operations:										
Mop up 50' from containment lines Grid and look for hot spots on the most southern portion of the division Minimize threat to values at risk										
8. Special Instructions										
AMB1 will be staged at DP 50, ALS 21 will be staged at DP 55										
9. Communication Summary										
Function	Name	Mode	Frequency							
PRIMARY COMMAND	CMD 2	A	154.5275	N	186.2	158.4	N	186.2		
NIGHT SHIFT COMMAND	REPUBLIC	A	159.36	N	118.8	151.235	N	118.8		
FERRY COUNTY DISPATCH	FY14REPT	A	153.845	N	91.5	158.805	N	103.5		
DIVISION W	TAC 7	A	151.625	N	186.2	151.625	N	186.2		
STRUCTURE	TAC 8	A	151.7	N	186.2	151.7	N	186.2		
A/G FIXED	A/G 1	A	167.8375	N	0	167.8375	N	156.7		
A/G ROTOR	A/G 2	A	169.15	N	0	169.15	N	203.5		
AIRGUARD	AIRGUARD	A	168.625	N	0	168.625	N	110.9		
Prepared by RESL(l) Jessica Walston		Approved by (PSC) Dusty Patrick			Date: 9/30/2024		Time: 1430			

DIVISION ASSIGNMENT LIST			1. Branch		2. Division / Group Page 2 of 2				W	
3. Incident Name GOOSMUS FIRE			4. Operational Period Date: 10/1/2024 Time: 0600-2000							
5. Operations Personnel										
Operations Chief		Aaron Coe (O-1.2)			Division/Group Supervisor		Daniel Montano (O-1.4)			
Safety Officer		Reed Heckly (O-23) & Mark Knokey (O-51)								
6. Resources Assigned this Period										
RO #	Strike Team/Task Force/Resource	Leader	# People	Contact (phone, radio freq, etc.)	EMT	LWD	Remarks			
LOL	ENG 7109 - Republic	Wyatt Breeze	3							
LOL	ENG 7111 - Republic	Riley Rose	3							
O-9	HEQB	Timothy Bruner	1			10/11				
E-1	DZR2 - TOP GRADE EXCAVATION - 93-102575	Mike Friend	1			10/10				
E-8	DZR4 - STOTTS CONSTRUCTION, INC	Miles Anderson	1			10/10				
E-20	WTS2 - NORTHWEST TREE SERVICE -	Corey Jones	1			10/11				
E-21	WTS2 - MICA PEAK INDUSTRIES - 93-105797	Logan Madson	1			10/11				
O-5	FMOD - FALLER MODULE - NEWMAN BEN A - MOD 2 -	Ethan Newman	2			10/11				
E-41	SKG2 - LOST CREEK LOGGING	Mike Aubert	2			10/12				
E-52	SKG4 - DARRELL GREEN - 031057	Steve Michlitch	2	509-322-0504		10/13				
E-28	AMB1 - CURLEW MED-1	Teresa Jenkins	3	425-829-2534		10/10				
O-20	EMPF - ALS - 21	Brian Spendlove	1	720-835-3145		10/12				
			21		0					
7. Control Operations:										
Mop up 50' from containment lines Grid and look for hot spots on the most southern portion of the division Minimize threat to values at risk										
8. Special Instructions										
AMB1 will be staged at DP 50, ALS 21 will be staged at DP 55										
9. Communication Summary										
Function	Name	Mode	Frequency							
PRIMARY COMMAND	CMD 2	A	154.5275	N	186.2	158.4	N	186.2		
NIGHT SHIFT COMMAND	REPUBLIC	A	159.36	N	118.8	151.235	N	118.8		
FERRY COUNTY DISPATCH	FY14REPT	A	153.845	N	91.5	158.805	N	103.5		
DIVISION W	TAC 7	A	151.625	N	186.2	151.625	N	186.2		
STRUCTURE	TAC 8	A	151.7	N	186.2	151.7	N	186.2		
A/G FIXED	A/G 1	A	167.8375	N	0	167.8375	N	156.7		
A/G ROTOR	A/G 2	A	169.15	N	0	169.15	N	203.5		
AIRGUARD	AIRGUARD	A	168.625	N	0	168.625	N	110.9		
Prepared by RESL(t) Jessica Walston		Approved by (PSC) Dusty Patrick			Date: 9/30/2024		Time: 1430			




IAP
 Goosmus
 WA-NES-002063
 10/01/2024 day
 1738 acres at 9/29/2024 @ 1119
 0 0.25 0.5
 Miles
 1:38,000 | NE IMT3 Team1 | 9/30/2024 2005
 Acres from remote sensing and GPS
 North American 1983 Datum, LatLong Grid

DIV W


DIV A

DIV H

- Helispot
- ⌘ Division Break
- ⊕ Medical
- Drop Point
- ▭ Staging Area
- ⌘ Lookout
- ⊙ Hot Spot - Spot Fire
- ⊗ Fire Origin
- ⊙ Value at Risk
- Other
- Resource Location
- ⬢ Fence - Cut/Damaged
- ⬢ Dozer Push
- ⊙ Draft Site
- ⊙ Pump
- ⊗ Completed Dozer Line
- ⌘ Completed Fuel Break
- ⌘ Completed Hand Line
- ⌘ Completed Road as Line
- Access Route
- Other
- Contained
- Uncontained
- Wildfire Daily Fire Perimeter
- US Forest Service
- US Bureau of Land Management
- Tribal Lands



WEATHER	1. Incident Name GOOSMUS FIRE	2. Date Prepared 9/30/2024	3. Time Prepared 1200
<p>Forecast is based on a start time of 1800 PDT on September 30.</p>			
<p>DISCUSSION</p>			
<p>Upper level high pressure will sit over the area Tuesday morning. This will bring dry and tranquil weather with relatively light terrain driven winds and dry relative humidity levels. Then a cold front is expected to move through the area in the afternoon. The front will deliver increasing winds and moisture however measurable rainfall is not expected at this time. Moderate west to northwest winds will continue on Wednesday with slightly higher relative humidity levels. Lighter winds and milder temperatures will return by Thursday and could continue through the end of the work week.</p>			
<p>TONIGHT</p>			
<p>Sky/weather.....Mainly clear in the evening then increasing clouds. CWR.....0 percent. LAL.....1. Min temperature.....Around 38. Max humidity.....70 percent. Wind (20 ft).....South wind to 1 to 4 mph in the evening becoming variable 0 to 3 mph overnight. Mixing height.....1200 ft AGL. Transport winds.....Variable to 5 mph. Haines Index.....3 Very Low.</p>			
<p>TUESDAY</p>			
<p>Sky/weather.....Mostly cloudy. A few sprinkles possible after 1500. CWR.....5 percent. LAL.....1. Max temperature.....Around 66. Min humidity.....25 percent. Wind (20 ft).....Variable wind 1 to 3 mph in the morning becoming becoming south to southwest 3 to 7 mph during the afternoon with gusts to 16 mph possible after 1500. Mixing height.....1500 ft AGL increasing to 4000 ft AGL in the afternoon. Transport winds.....South to southwest 7 to 12 mph. Haines Index.....2 Very Low.</p>			
<p>TUESDAY NIGHT</p>			
<p>Sky/weather.....Partly cloudy and cool. CWR.....5 percent. LAL.....1. Min temperature.....Around 36. Max humidity.....85 percent. Wind (20 ft).....Southwest to west 4 to 8 mph in the evening with gusts to 14 mph possible in the evening. Winds decreasing to 2 to 5 mph overnight. Mixing height.....1000 ft AGL. Transport winds.....Southwest 5 to 10 mph. Haines Index.....4 Low.</p>			
<p>WEDNESDAY</p>			
<p>Sky/weather.....Sunny. CWR.....0 percent. LAL.....1. Max temperature.....Around 63. Min humidity.....27 percent. Wind (20 ft).....West to Northwest winds 3 to 6 mph. Mixing height.....1200 ft AGL increasing to 7000 ft AGL in the afternoon. Transport winds.....West to northwest 8 to 14 mph. Haines Index.....2 Very Low.</p>			

INCIDENT RADIO COMMUNICATIONS PLAN I-205				1. INCIDENT NAME		2. DATE/TIME PREPARED			3. OPERATIONAL PERIOD DATE/TIME		
				GOOSMUS		9/30/2024 0649			10/1/24 0600-2000		
4. BASIC RADIO CHANNEL UTILIZATION											
Ch #	Function	Channel Name	Assignment	RX Freq	NW	RX Tone/NAC	TX Freq	NW	TX Tone/NAC	Mode Analog (A) Digital (D) Mixed (M)	Remarks
1	COMMAND	CMD 1	CMD	151.5125	N	186.2	158.4075	N	186.2	A	
2	COMMAND	CMD 2	CMD	154.5275	N	186.2	158.4000	N	186.2	A	PRIMARY COMMAND
3	COMMAND	REPUBLIC	CMD	159.3600	N	118.8	151.2350	N	118.8	A	NIGHT SHIFT COMMAND
4	COMMAND	FY14REPT	CMD	153.8450	N	91.5	158.8050	N	103.5	A	FERRY COUNTY DISPATCH
5	TAC	SILVER	TAC	163.8900	N	0.0	163.8900	N	0.0	A	DIVISION A
6	TAC	TAC 6	TAC	151.7600	N	186.2	151.7600	N	186.2	A	DIVISION H
7	TAC	TAC 7	TAC	151.6250	N	186.2	151.6250	N	186.2	A	DIVISION W
8	TAC	TAC 8	TAC	151.7000	N	186.2	151.7000	N	186.2	A	STRUCTURE
9	TAC	TAC 9	TAC	151.5050	N	186.2	151.5050	N	186.2	A	
10	TAC	REDNET	TAC	153.8300	N	0.0	153.8300	N	156.7	A	REDNET
11	TAC	VTAC 11	TAC	151.1375	N	0.0	151.1375	N	156.7	A	
12	TAC	VTAC 12	TAC	154.4525	N	0.0	154.4525	N	156.7	A	
13	TAC	OSSCR	TAC	156.1350	N	0.0	156.1350	N	203.5	A	MEDEVAC
14	A/G	A/G 1	A/G	167.8375	N	0.0	167.8375	N	156.7	A	A/G PRIMARY
15	A/G	A/G 2	A/G	169.1500	N	0.0	169.1500	N	203.5	A	A/G SECONDARY
16	AIRGUARD	AIRGUARD	A/G	168.6250	N	0.0	168.6250	N	110.9	A	AIRGUARD
5. Special Instructions: CMD 1 @ ICP AND CMD 2 ARE LINKED, VIA UHF. BATTERIES AVAILABLE AT COMMS TRAILER IN FIRE CAMP AT FAIRGROUNDS											
6. I-205 Prepared By: Communications Unit Leader						Name: JEFFREY SMETZLER			Signature: 		

SAFETY MESSAGE

SAFETY IS OUR TOP PRIORITY

Firefighter safety comes first on every fire, every time.

MAKE SURE LCES IS IN PLACE

Each firefighter must know the interconnection of LCES - lookouts, communications, escape routes, and safety zones. LCES should be established before engaging the fire: Select lookouts if needed and post in strategic locations, establish communications with coworkers and adjoining forces, determine escape routes and make them known, and select safety zones adequate for the fire behavior.

MAJOR HAZARDS AND RISKS

- | | |
|---|---|
| <ul style="list-style-type: none"> • Snags and burned out trees —heads up! • Steep slopes, rolling material—watch footing • Ash pits and stump holes • Poor visibility while driving from dusty roads | <ul style="list-style-type: none"> • Driving: One-way roads, speed, looky-loos • Civilian traffic in the fire area • Deer on highway dawn and dusk • End-of-day fatigue while driving |
|---|---|

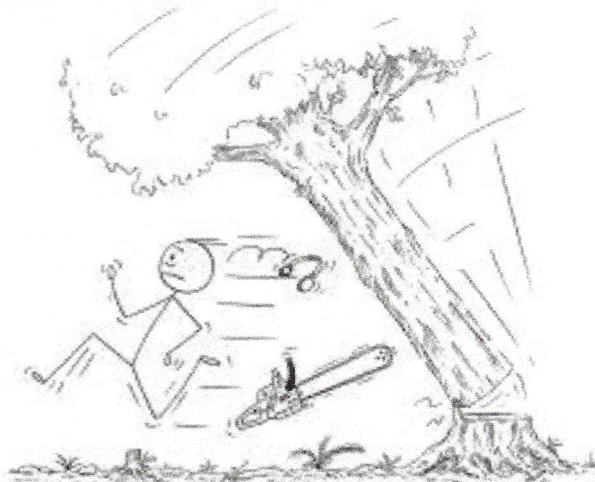
TODAY'S SAFETY EMPHASIS

SNAGS! SNAGS! SNAGS!

Falling trees and snags are one of the leading causes of death and injury for wildland firefighters.

SNAG / GREEN TREE HAZARD ALERTS

- Is mopup work extending into areas not checked for overhead hazards? Heights of surrounding trees could extend into work area if they should fall. Check for soundness and fire damage.
- Snags/green trees are falling or have fallen nearby to work area.
- Leaning or hung-up trees are present in work area.
- Trees with dead or broken tops and limbs overhead are present in work area.
- Work area is subject to retardant drops, helicopter bucket drops and rotor down drafts.
- High risk tree species (rot and shallow root system, i.e., aspen, cedar, spruce) are present in work areas.
- Crews are working in a hazard tree area at night.
- Crews are working in a hazard tree area and the wind is blowing.
- Crews are working in an area where trees have been burning for some time.
- Work area has swampy wet areas or sandy loose soil.
- Crewmembers are taking a break in a hazard tree area.
- Lookouts have not been posted in a hazard tree area.
- Lookouts are not advising the crew of the presence of hazard trees.
- Heavy equipment and vehicles are creating ground vibrations from nearby operations.
- Winds are increasing or are predicted to increase.
- Escape routes pass through hazard tree area.

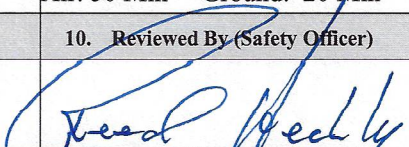


GENERAL WATCHOUTS IN PLAY (Do you see other watchouts also?)

- #9. Building line downhill without safe anchor point.
- #11. Unburned fuel between you and the fire.
- #13. On a hillside where rolling material can ignite fuel below.
- #17. Terrain and fuels make escape to safety zones difficult.

MEDICAL PLAN (ICS 206 WF)





Controlled Unclassified Information//Basic

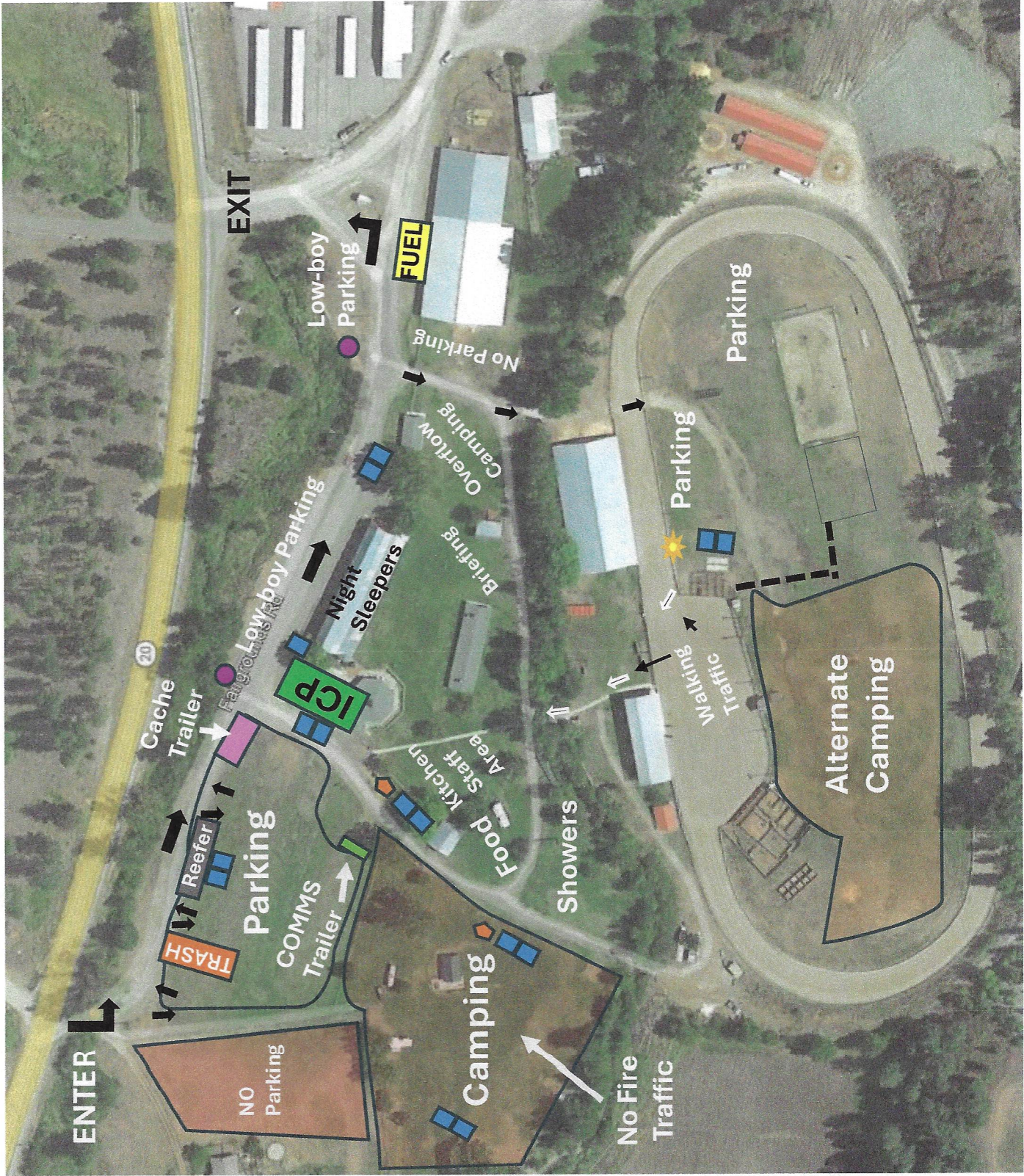
1. Incident/Project Name		2. Operational Period						
WA-NES-002063 Goosmus Fire		October 1, 2024						
3. Ambulance Services								
Name	Complete Address	Phone & EMS Frequency	Advanced Life Support (ALS) Yes No					
Ferry County Dist. 14 Fire	24 Catherine Creek Rd Curlew, WA 99118	911/FY14 REPT	<input type="checkbox"/>	<input checked="" type="checkbox"/>				
Ferry County EMS Dist. 1	499 W 9th St Republic WA 99156	911	<input type="checkbox"/>	<input checked="" type="checkbox"/>				
4. Air Ambulance Services								
Name	Phone	Type of Aircraft & Capability						
Life Flight Network	800-232-0911	Helicopter, ALS						
Air Lift Northwest	888-835-1599	Helicopter, ALS						
Spokane County Sheriff – Rescue 3	509-532-8900	Huey with Hoist, ALS						
5. Hospitals								
Name Complete Address	GPS Datum – WGS 84 Coordinate Standard Degrees Decimal Minutes DD° MM.MMM' N - Lat DD° MM.MMM' W - Long		Travel Time Air Gnd		Phone	Helipad Yes No		Level of Care Facility
	Lat:	48°32.449000'N	20 Min	70 Min		509-685-5100	<input checked="" type="checkbox"/>	
Providence Mt Carmel Hospital	Long:	117°53.492167'W				<input type="checkbox"/>	<input type="checkbox"/>	Level 4
	VHF:					<input type="checkbox"/>	<input type="checkbox"/>	
	Lat:	48°39.157'N				<input type="checkbox"/>	<input type="checkbox"/>	
Ferry County Memorial Hospital	Long:	118°44.062'W	10 Min	40 Min	509-775-3333	<input type="checkbox"/>	<input type="checkbox"/>	Level 4
	VHF:					<input type="checkbox"/>	<input type="checkbox"/>	
	Lat:	47°38.947667'N				<input type="checkbox"/>	<input type="checkbox"/>	
Providence Sacred Heart Medical Center	Long:	117°24.784667'W	45 Min	180 Min	509-474-3131	<input type="checkbox"/>	<input type="checkbox"/>	Level 2
	VHF:					<input type="checkbox"/>	<input type="checkbox"/>	
	Lat:	47°36.168833'N				<input type="checkbox"/>	<input type="checkbox"/>	
Harborview Medical Center	Long:	122°19.481000'W	90 Min	330 Min	206-223-3177	<input type="checkbox"/>	<input type="checkbox"/>	Level 1
	VHF:					<input type="checkbox"/>	<input type="checkbox"/>	
	Lat:	47°36.168833'N				<input type="checkbox"/>	<input type="checkbox"/>	
6. Division Branch Group			Area Location Capability					
A	EMS Responders & Capability:		AMBO 2					
	Equipment Available on Scene:							
	Medical Emergency Channel:		Goosmus Communications					
	ETA for Ambulance to Scene:		Air: 50 Min Ground: 20 Min					
H	EMS Responders & Capability:		Multiple within Modules					
	Equipment Available on Scene:							
	Medical Emergency Channel:		Goosmus Communications					
	ETA for Ambulance to Scene:		Air: 50 min Ground: 20 min					
W	EMS Responders & Capability:		AMBO 1, ALS 21 Spendlove					
	Equipment Available on Scene:							
	Medical Emergency Channel:		Goosmus Communications					
	ETA for Ambulance to Scene:		Air: 50 Min Ground: 20 Min					
8. Prepared By (Medical Unit Leader)			9. Date/Time	10. Reviewed By (Safety Officer)		11. Date/Time		
Mary Andersen			9/30/2024			9/30/2024		

Goosmus Fire Basecamp Map

Ferry County Fairgrounds

LEGEND

-  Porta-johns
-  Hand washing
-  Hydrant
-  Thru-Traffic Flow



Goosmus Fire LOGISTICS INFORMATION

ICP	0600-2200
FOOD	Breakfast: 0500-0800 Dinner: 1800-2100 Food times may change. Late returning to camp? Please call the Logistics Chief phone or communications via radio.
SHOWERS	Shower times will be 0500 to 1100; 1500-2300
FUELING HOURS	0530 to 2100. Fuel truck will be doing rounds during the day supplying the camp and may not always be available.

- Fuel truck available at the east end of the camp near the triangle. ***Any fuel dispensed will be a deduction from your final invoice. Have your resource order number ready.***
- Please see the map for parking and other camp information. It can change daily.
- Please pay attention to the “Entrance/Exit” signage on our maps. This is to help facilitate the morning and evening rush.
- Tenders: Please fill up at the hydrants along Fairgrounds Road during non-rush hour times. Track your gallonage on your shift tickets please.
 - The 4th of July Creek Road fill site is active. It can be a tight turn but supplies about 1,000gpm. It is just west of the Danville Post Office and marked with blue ribbon. You do not need to keep track of these fills.
- On GMs please include contact name and phone number
 - Be detailed on what you want
 - Write very clearly
 - Go through your Div Sup and Ops
- *Please keep vehicle speeds down through fire camp and adjacent roads.*
- Lunches, water, and sports drinks will be available in the reefer.
- Ice is available in the reefer as well.
- We will have a camp MEDL set up—They are operating at the ICP and have a med supply for bumps, cuts, and blisters (and other things). There is also a “sick area” set as well. If you are sick, please phone Mary Andersen at 509-680-2846. Do not come into the ICP feeling ill.

PIO Corner

Idk Dsad
You guys are doing a amazing job, thank you for your
service

Lori Noel
Praise God!!!
Here is the Calvary 🙏🙏🙏🙏🙏🙏

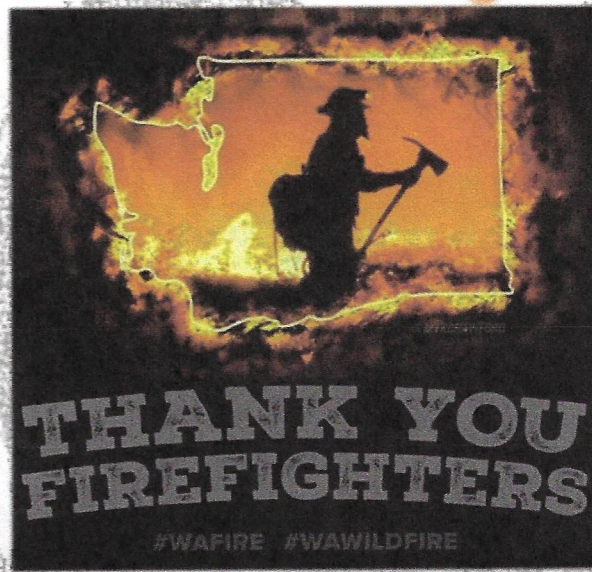
Kelly Nasmyth
THANKYOU ! -so very much ❤️

Vicki Nichols
Thank you firefighters and those helping praying for
your safety

From Our Community to You

Mary Robinson-Mohr
Thank you, firefighters!

Alvin Denison
YAYA THANK YOU GUYS 😊



Candy Clark
It's going to be OK

Masha Toporowski
Thank you for your service!

Thank You for What You Do!

Marlowe Brown
Thank you SO MUCH!!! You are all heroes!! 🙌🙌🙌

We Love All Crew and Fire Photos! Help us tell your story to the public

Text them to: 509-808-6720 or email to WildGoatFire@gmail.com

We would love to share with the community how hard you are working.

Let us know if questions arise and direct them to:

509-808-6720

Kachina Michaelson
Prayers up for our people and first response team!!

Kathy Ducote
Thank you for all your doing , please stay safe

FINANCE MESSAGE	1. Incident Name Goosmus	2. Date Prepared 9/29/2024	3. Time Prepared 11:32
------------------------	------------------------------------	--------------------------------------	----------------------------------

Please remember to keep your time up to date and CTRs turned in for a smooth demobe!

Please submit your original Shift Tickets and/or CTRs directly to us at morning briefing or ICP.

Have a safe and wonderful shift!

MEDICAL PLAN (ICS 206 WF)

Controlled Unclassified Information//Basic

Medical Incident Report

FOR A NON-EMERGENCY INCIDENT, WORK THROUGH CHAIN OF COMMAND TO REPORT AND TRANSPORT INJURED PERSONNEL AS NECESSARY.

FOR A MEDICAL EMERGENCY: IDENTIFY ON SCENE INCIDENT COMMANDER BY NAME AND POSITION AND ANNOUNCE "MEDICAL EMERGENCY" TO INITIATE RESPONSE FROM IMT COMMUNICATIONS/DISPATCH.

Use the following items to communicate situation to communications/dispatch.

1. CONTACT COMMUNICATIONS / DISPATCH (Verify correct frequency prior to starting report)

Ex: "Communications, Div. Alpha. Stand-by for Emergency Traffic."

2. INCIDENT STATUS: Provide incident summary (including number of patients) and command structure.

Ex: "Communications, I have a Red priority patient, unconscious, struck by a falling tree. Requesting air ambulance to Forest Road 1 at (Lat./Long.) This will be the Trout Meadow Medical, IC is TFLD Jones. EMT Smith is providing medical care."

Severity of Emergency / Transport Priority	<input type="checkbox"/> RED / PRIORITY 1 Life or limb threatening injury or illness. Evacuation need is IMMEDIATE <i>Ex: Unconscious, difficulty breathing, bleeding severely, 2^o – 3^o burns more than 4 palm sizes, heat stroke, disoriented.</i> <input type="checkbox"/> YELLOW / PRIORITY 2 Serious Injury or illness. Evacuation may be DELAYED if necessary. <i>Ex: Significant trauma, unable to walk, 2^o – 3^o burns not more than 1-3 palm sizes.</i> <input type="checkbox"/> GREEN / PRIORITY 3 Minor Injury or illness. Non-Emergency transport <i>Ex: Sprains, strains, minor heat-related illness.</i>	
Nature of Injury or Illness & Mechanism of Injury		<i>Brief Summary of Injury or Illness (Ex: Unconscious, Struck by Falling Tree)</i>
Transport Request		<i>Air Ambulance / Short Haul/Hoist Ground Ambulance / Other</i>
Patient Location		<i>Descriptive Location & Lat. / Long. (WGS84)</i>
Incident Name		<i>Geographic Name + "Medical" (Ex: Trout Meadow Medical)</i>
On-Scene Incident Commander		<i>Name of on-scene IC of Incident within an Incident (Ex: TFLD Jones)</i>
Patient Care		<i>Name of Care Provider (Ex: EMT Smith)</i>

3. INITIAL PATIENT ASSESSMENT: Complete this section for each patient as applicable (start with the most severe patient)

Patient Assessment: See IRPG page 106

Treatment:

4. TRANSPORT PLAN:

Evacuation Location (if different): (Descriptive Location (drop point, intersection, etc.) or Lat. / Long.) Patient's ETA to Evacuation Location:

Helispot / Extraction Site Size and Hazards:

5. ADDITIONAL RESOURCES / EQUIPMENT NEEDS:

Example: Paramedic/EMT, Crews, Immobilization Devices, AED, Oxygen, Trauma Bag, IV/Fluid(s), Splints, Rope rescue, Wheeled litter, HAZMAT, Extrication

6. COMMUNICATIONS: Identify State Air/Ground EMS Frequencies and Hospital Contacts as applicable

Function	Channel Name/Number	Receive (RX)	Tone/NAC *	Transmit (TX)	Tone/NAC *
COMMAND					
AIR-TO-GRND					
TACTICAL					

7. CONTINGENCY: Considerations: If primary options fail, what actions can be implemented in conjunction with primary evacuation method? Be thinking ahead.

8. ADDITIONAL INFORMATION: Updates/Changes, etc.

REMEMBER: Confirm ETA's of resources ordered. Act according to your level of training. Be Alert. Keep Calm. Think Clearly. Act Decisively.