

DAY

INCIDENT ACTION PLAN

GOOSMUS FIRE

WA-NES-002063



For maps, evaluations, and IAPs Scan the QR Code!



Wednesday, October 02, 2024  
0600-2000 Operational Period

(Charge Codes)


AIY-221

PN R8Z0 (1522) [P]

STATE MOBILIZATION WA-WFS-521

State and Federal cost share breakdown

AIR	Daily	Approval	GROUND	Daily	Approval
DNR	%		DNR	%	
MOB	%		MOB	%	
BLM	%		BLM	%	

<b>Incident Objectives</b>	1. Incident Name <b>GOOSMUS FIRE</b>	2. Date Prepared <b>10/1/2024</b>	3. Time Prepared <b>1500</b>
4. Operational Period (Date and Time) <b>10/2/2024 0600-2000</b>			
5. General Control Objectives for the Incident (include Alternatives)  <ul style="list-style-type: none"> <li>• Provide for the safety of firefighters and the public through utilization of strategic and deliberate risk assessment processes. Ensure incident within an incident protocols are established and understood by all.</li> <li>• Develop strategic plans to prioritize and protect identified values at risk to the surrounding private residences and communities.</li> <li>• Engage in transparent communication with agency administrators and local fire department officials, to ensure critical information is shared during the decision-making process.</li> <li>• Enhance relationships throughout the area through communication and active involvement with the stakeholders, including; residents, public agencies, community leaders, cooperators, and landowners.</li> <li>• Maintain fiscal accountability of the incident while supporting the needs of the host agencies and the community.</li> <li>• Assist in initial attack and support as requested by the host agencies while maintaining communication and coordination.</li> </ul>			
6. Weather Forecast for Operational Period  <b>See attached weather forecast</b>			
7. General Safety Message  <ul style="list-style-type: none"> <li>• Provide for firefighter and public safety at all times.</li> <li>• Monitor compliance of 10 and 18 by all incident personnel.</li> <li>• Adhere to 2:1 work/rest ratio for all fire line personnel.</li> <li>• Aviation safety is high priority. Assess the risk against the benefit of the mission.</li> <li>• Ensure all assigned personnel understand emergency medical reporting &amp; transport procedures including locations of nearest emergency responders &amp; facilities.</li> </ul>			
8. Attachments (check if attached)			
ICS-202	9. Prepared by PSC <b>Dusty Patrick</b>	10. Approved by (IC) 	



<b>ORGANIZATION ASSIGNMENT LIST</b>				
1. Incident Name		<b>GOOSMUS FIRE</b>		<b>9. LOGISTICS SECTION</b>
2. Date Prepared	10/1/2024	3. Time	1500	Logs Chief
				Mike Bucy (O-1.12)
4. Operational Period	10/2/2024	0600-2000	Logs Chief (t)	Jennifer Thompson (O-1.13)
<b>5. INCIDENT COMMANDER &amp; STAFF</b>			Logs Chief (t)	Aurora Bernard (O-44)
Incident Commander	Andrew Stenbeck (O-1.1)		BCMG	James Daeschler (O-1.18)
Safety Officer	Reed Heckly (O-23)		BCMG (t)	Aaron Culp (O-1.14)
Safety Officer	Mark Knokey (O-51)			
MEDL	Mary Andersen (O-16)			
MEDL (t)	Dan Garner (O-24)		<b>10. OPERATIONS SECTION</b>	
PIO	Isabelle Hoygaard-Reeser (O-1.16)		Field	Aaron Coe (O-1.2)
PIO (t)	Jessa Lewis (O-45)		Planning	Brian Hansen (O-46)
			<b>a. Division A</b>	
<b>6. AGENCY REPRESENTATIVE</b>			DIVS	Timothy Cawley-Murphee (O-43)
<b>Agency</b>	<b>Name</b>		DIVS (t)	Austin Hatten (O-1.5)
BLM	Shevawn Sapp		<b>b. Division H</b>	
BLM	Michelle Brown		DIVS (t)	Brock Schuh (O-1.3)
WA DNR	Pat Ryan			
WA DNR	Brett Walker		<b>c. Division W</b>	
WA DNR	Kyle Pomrankey		DIVS	Daniel Montano (O-1.4)
WSP	Brian Briscoe			
Ferry County Sheriff	Ray Maycumber		<b>c. Division NIGHT</b>	
Ferry Fire Chief Dist 13	Eric Hewitt		DIVS	Jim Wheeler (O-50)
Ferry Fire Chief Dist 14	John Porter			
DEM	Steve Bonner		<b>11. FINANCE SECTION</b>	
			FSC	Michelle Leonard (O-1.11)
<b>7. PLANNING SECTION</b>			FSC	Marcy Johnson (O-1.10)
Planning Chief	Dusty Patrick (O-1.6)		EQRT	Sharleen Puckett (O-1.17)
RESL	Jessica Walston (v) (O-1.7)		PTRC (t)	Walt Seidel (O-13)
SITL (t)	Eric Krausz (O-1.8)			
GISS	Rose Beaton (v) (O-31)			
			<b>12. CONTACTS / OTHER INFORMATION</b>	
<b>8. COMMUNICATIONS</b>			NEWICC (509) 685-6900	
INCM	Jeff Smetzler (E-15.1)		Spokane Valley Comms: 509-389-2002	
RADO	John Nelson (E-15.3)		Spot Weather: 541-276-4493	
RADO (t)	Glen Schade (O-49)			
COMT	Robert Leaming (E-15.2)			
COMT	Kevin Judd (O-32)			
Prepared by:				
Dusty Patrick PSC3				

DIVISION ASSIGNMENT LIST			1. Branch		2. Division / Group			Page 1 of 2		A	
3. Incident Name <b>GOOSMUS FIRE</b>				4. Operational Period Date: <b>10/2/2024</b> Time: <b>0600-2000</b>							
5. Operations Personnel											
Operations Chief		Aaron Coe (O-1.2)			Division/Group Supervisor			Timothy Cawley-Murphee (O-43)			
Safety Officer		Reed Heckly (O-23) & Mark Knokey (O-51)						Austin Hatten (O-1.5)			
6. Resources Assigned this Period											
RO #	Strike Team/Task Force/Resource	Leader	# People	Contact (phone, radio freq, etc.)	EMT	LWD	Remarks				
C-8.1	TFLD	Dylan Chester	1			10/10					
C-8	CR21 - NW - NES - NORTH COLUMBIA - DNR	Eric Olsen	20			10/9					
C-10	CR21 - VALHALLA CANADIAN CREW		14		3						
C-11	CR21 - SENTINEL UC - CANADIAN CREW		12		3						
O-33	SMOD - NEWAUKUM MODULE	Joshua White	11		1	10/12					
O-2	STEN	David Way	1			10/9					
O-3	STEN(t)	Tanner Stemkoski	1			10/8					
E-3	ENG5 - 2204 - WA-PCS	Nathan Jurgensen	3		1	10/8					
E-4	ENG5 - 2405 - WA-PCS	Travis Pakenen	4		1	10/8					
E-5	ENG5 - 5302 - WA-NWS	Chad Bowman	4			10/8					
E-6	ENG5 - E8201 - WA-SPS	Myles Reed	4		1	10/8					
E-7	ENG5 - ENGINE 1301 - WAOLS (WA-OLS-E5X-1301)	Morgan Reisdorfer	4		1	10/8					
E-42	ENG6 - METHOW RIVER WILD FIRE - 500915	Andy Dalton	3			10/12					
E-43	ENG6 - METHOW RIVER WILD FIRE - 150300	Leonardo Sanche	3			10/11					
O-2116	STL - WALLA WALLA	Shawn Ongers	1	509-386-3900		10/12					
E-2117	ENG4 - WALLA WALLA	Derick Schoessler	2		2	10/12					
E-2118	ENG4 - BENTON 4	Manuel Estrella	2	509-619-4086		10/12					
E-2119	ENG5 - WALLA WALLA 4	Ryan Chase	2		2	10/11					
E-2120	ENG5 - WEST BENTON	William Petersen	2			10/11					
E-2122	WTS2 - WALLA WALLA 8	Tim Daves	1		1	10/11					
O-6	FMOD - NEWMAN BEN A	Ben Newman	2			10/11					
O-7	FELB	John Walker	1			10/12					
			98		16						
7. Work Assignments											
<b>Identify and mitigate spot fires on north end of division</b> <b>Secure containment line along timbered draw west of upper Danville Road</b> <b>Continue 50' mop up</b> <b>Begin gridding to confirm containment lines</b>											
<b>AMBO 2 staged at DP 5 (Post Office)</b>											
9. Communication Summary											
Function	Name	Mode	RX FREQ	N/W	RX TONE/NAC	TX FREQ	N/W	TX TONE/NAC			
PRIMARY COMMAND	CMD 2	A	154.5275	N	186.2	158.4	N	186.2			
NIGHT SHIFT COMMAND	REPUBLIC	A	159.36	N	118.8	151.235	N	118.8			
FERRY COUNTY DISPATCH	FY14REPT	A	153.845	N	91.5	158.805	N	103.5			
DIVISION A	SILVER	A	163.89	N	0	163.89	N	0			
STRUCTURE	TAC 8	A	151.7	N	186.2	151.7	N	186.2			
A/G	DNR A/G 2	A	151.2875	N	103.5	151.2875	N	103.5			
A/G	A/G 51	A	168.3125	N	0	168.3125	N	0			
AIRGUARD	AIRGUARD	A	168.625	N	0	168.625	N	110.9			
Prepared by SITL (t) Eric Krausz		Approved by (PSC) Dusty patrick			Date: 10/1/2024			Time: 1430			



DIVISION ASSIGNMENT LIST			1. Branch		2. Division / Group		Page 2 of 2		A		
3. Incident Name				4. Operational Period							
GOOSMUS FIRE				Date: 10/2/2024		Time: 0600-2000					
5. Operations Personnel											
Operations Chief		Aaron Coe (O-1.2)			Division/Group Supervisor		Timothy Cawley-Murphee (O-43)				
Safety Officer		Reed Heckly (O-23) & Mark Knokey (O-51)					Austin Hatten (O-1.5)				
6. Resources Assigned this Period											
RO #	Strike Team/Task Force/Resource	Leader	# People	Contact (phone, radio freq, etc.)	EMT	LWD	Remarks				
O-2101	STL - SNO. 22	Travis Hots	1			10/11					
O-2108	STL(t) - NORTH SNOHOMISH RFA	Keith Johnson	1			10/10					
E-2102	ENG3 - SNO. 26	Shane Roeder	3		3	10/11					
E-2103	ENG3 - SNO. 22	Jim Bansbach	2		2	10/11					
E-2104	ENG6 - SNO. 22	Robert White	2		2	10/11					
E-2105	ENG3 - SNO. 16	Scott Anderson	3		3	10/11					
E-2107	WTS2 - WHATCOM 14	Cameron Clark	1			10/10					
LOL	ENG - 621	Savannah Stranger	3		1	10/1					
E-38	SKG3 - DARRELL GREEN - 553667	Scott Shinall	2	425-445-6603		10/12					
O-8	HEQB	Michael Correia	1			10/13					
E-2	DZR3 - PARADIGM INDUSTRIES LLC - A29862	JT Mcelhose	1			10/9					
E-17	WTS2 - SC RIVER LAND MANAGEMENT SOLUTIONS, LLC - 93-102370	TIM SCRIVER	1			10/10					
E-34	AMBO 2 - PECN 2	Beth Osgood	2	509-710-0472		10/11					
			23		11						
7. Work Assignments											
<b>Identify and mitigate spot fires on north end of division</b> <b>Secure containment line along timbered draw west of upper Danville Road</b> <b>Continue 50' mop up</b> <b>Begin gridding to confirm containment lines</b>											
8. Special Instructions											
AMBO 2 staged at DP 5 (Post Office)											
9. Communication Summary											
Function	Name	Mode	RX FREQ	N/W	RX TONE/NAC	TX FREQ	N/W	TX TONE/NAC			
PRIMARY COMMAND	CMD 2	A	154.5275	N	186.2	158.4	N	186.2			
NIGHT SHIFT COMMAND	REPUBLIC	A	159.36	N	118.8	151.235	N	118.8			
FERRY COUNTY DISPATCH	FY14REPT	A	153.845	N	91.5	158.805	N	103.5			
DIVISION A	SILVER	A	163.89	N	0	163.89	N	0			
STRUCTURE	TAC 8	A	151.7	N	186.2	151.7	N	186.2			
A/G	DNR A/G 2	A	151.2875	N	103.5	151.2875	N	103.5			
A/G	A/G 51	A	168.3125	N	0	168.3125	N	0			
AIRGUARD	AIRGUARD	A	168.625	N	0	168.625	N	110.9			
Prepared by RESL(t) Jessica Walston			Approved by (PSC) Dusty Patrick			Date: 10/1/2024		Time: 1430			



DIVISION ASSIGNMENT LIST			1. Branch		2. Division / Group			Page 1 of 1		H
3. Incident Name				4. Operational Period						
GOOSMUS FIRE				Date: 10/2/2024			Time: 0600-2000			
5. Operations Personnel										
Operations Chief		Aaron Coe (O-1.2)			Division/Group Supervisor			Brock Schuh (O-1.3)		
Safety Officer		Reed Heckly (O-23) & Mark Knokey (O-51)								
6. Resources Assigned this Period										
RO #	Strike Team/Task Force/Resource	Leader	# People	Contact (phone, radio freq, etc.)	EMT	LWD	Remarks			
O-18	SMOD - LACAMAS HAND CREW	Jayme Morgan	8			10/12				
O-19	SMOD - PEAK IA MODULE	Cole Phelan	11			10/11				
O-39	TFLD	Philip Shafto	1			10/12				
E-25	ENG6 - ALDER CREEK FIRE INC - B01948	Steve Ward	3			10/12				
E-40	ENG6 - THE GENERAL CONTRACTOR, LLC - B96605	Tom Adams	3			10/12				
E-16	ENG5 - AR 7401 - DNR	James Spencer	4		2	10/11				
E-45	WTS3 - CIAIS, ANDRE - 077186	Jeffery Echols	1			10/12				
			31		2					
7. Control Operations:										
<p><b>Mop up 100' off primary containment lines</b>  <b>Reduce/mitigate hazard trees for fire fighter and public safety</b>  <b>Mop up visible smoke from HWY 21</b>  <b>Hand held IR 50' off all containment lines</b>  <b>Minimize threat to values at risk</b></p>										
8. Special Instructions										
9. Communication Summary										
Function	Name	Mode	Frequency							
PRIMARY COMMAND	CMD 2	A	154.5275	N	186.2	158.4	N	186.2		
NIGHT SHIFT COMMAND	REPUBLIC	A	159.36	N	118.8	151.235	N	118.8		
FERRY COUNTY DISPATCH	FY14REPT	A	153.845	N	91.5	158.805	N	103.5		
DIVISION H	TAC 6	A	151.76	N	186.2	151.76	N	186.2		
STRUCTURE	TAC 8	A	151.7	N	186.2	151.7	N	186.2		
A/G	DNR A/G 2	A	151.2875	N	103.5	151.2875	N	103.5		
A/G	A/G 51	A	168.3125	N	0	168.3125	N	0		
AIRGUARD	AIRGUARD	A	168.625	N	0	168.625	N	110.9		
Prepared by RESL(t)			Approved by (PSC)				Date:		Time:	
Jessica Walston			Dusty Patrick				10/1/2024		1430	



DIVISION ASSIGNMENT LIST			1. Branch		2. Division / Group				
3. Incident Name <b>GOOSMUS FIRE</b>			4. Operational Period Date: <b>10/2/2024</b>		Time: <b>0600-2000</b>				
<b>5. Operations Personnel</b>									
Operations Chief		Aaron Coe (O-1.2)		Division/Group Supervisor		Daniel Montano (O-1.4)			
Safety Officer		Reed Heckly (O-23) & Mark Knokey (O-51)							
<b>6. Resources Assigned this Period</b>									
RO #	Strike Team/Task Force/Resource	Leader	# People	Contact (phone, radio freq, etc.)	EMT	LWD	Remarks		
C-4	CR2I - SRV #12	Julian Jacobo	21			10/12			
C-5	CR2I - PatRick Environmental, Inc. NCC	Garth Chambers	20			10/12			
C-6	CR2I - DIAMOND FIRE NCC 11B	Larry Eckelman	20	530-515-9139		10/12			
C-9	CR2I - NW - NES - HIGHLANDS - DNR	Seth Schertenleib	21			10/11			
O-40	TFLD	Andrew Schaffran	1			10/12			
E-22	ENG6 - BAILEY ENTERPRISES, L.L.C. -	Greg Bailey	3			10/11			
E-23	ENG6 - BLACKSTONE FORESTRY LLC - B76286	Chad Sheets	3			10/11			
E-24	ENG6 - WILD FIRE SERVICES, INC - D10873	Mike Foster	3			10/11			
E-26	ENG6 - ALDER CREEK FIRE INC - E02096	Vitas Labanausk	3			10/10			
O-57	STEN	Michael Nick	1			10/5			
O-58	STEN	Keegan McCormick	1			10/5			
E-59	ENG5 - NC 7301 - DNR	Gabriel Grobбен	4			10/5			
E-60	ENG5 - NC 7307 - DNR	John Steele	4			10/5			
E-61	ENG5 - AR 7412 - DNR	Andrew J. Stenbeck	4			10/5			
E-62	ENG5 - AR 7409 - DNR	Ty Williams	4			10/5			
E-63	ENG6 - OKCN 15 - B1523	Mike Hanson	5			10/5			
			118		0				
<b>7. Control Operations:</b>									
<b>Mop up 50' from containment lines</b> <b>Grid and look for hot spots on the most southern portion of the division</b> <b>Minimize threat to values at risk</b>									
<b>8. Special Instructions</b>									
AMB3 will be staged at DP 50, ALS 21 will be staged at DP 55									
<b>9. Communication Summary</b>									
Function	Name	Mode	Frequency						
PRIMARY COMMAND	CMD 2	A	154.5275	N	186.2	158.4	N	186.2	
NIGHT SHIFT COMMAND	REPUBLIC	A	159.36	N	118.8	151.235	N	118.8	
FERRY COUNTY DISPATCH	FY14REPT	A	153.845	N	91.5	158.805	N	103.5	
DIVISION W	TAC 7	A	151.625	N	186.2	151.625	N	186.2	
STRUCTURE	TAC 8	A	151.7	N	186.2	151.7	N	186.2	
A/G	DNR A/G 2	A	151.2875	N	103.5	151.2875	N	103.5	
A/G	A/G 01	A	100.0125	N	0	100.0125	N	0	
AIRGUARD	AIRGUARD	A	168.625	N	0	168.625	N	110.9	
Prepared by RESL(t) Jessica Walston			Approved by (PSC) Dusty Patrick			Date: 10/1/2024		Time: 1430	

DIVISION ASSIGNMENT LIST			1. Branch		2. Division / Group Page 2 of 2				<b>W</b>
3. Incident Name <b>GOOSMUS FIRE</b>			4. Operational Period Date: <b>10/2/2024</b> Time: <b>0600-2000</b>						
5. Operations Personnel									
Operations Chief		Aaron Coe (O-1.2)		Division/Group Supervisor		Daniel Montano (O-1.4)			
Safety Officer		Reed Heckly (O-23) & Mark Knokey (O-51)							
6. Resources Assigned this Period									
RO #	Strike Team/Task Force/Resource	Leader	# People	Contact (phone, radio freq, etc.)	EMT	LWD	Remarks		
LOL	ENG 7109 - Republic	Wyatt Breeze	3						
LOL	ENG 7111 - Republic	Riley Rose	3						
O-9	HEQB	Timothy Bruner	1			10/11			
E-1	DZR2 - TOP GRADE EXCAVATION - 93-102575	Mike Friend	1			10/10			
E-8	DZR4 - STOTTS CONSTRUCTION, INC	Miles Anderson	1			10/10			
E-20	WTS2 - NORTHWEST TREE SERVICE -	Corey Jones	1			10/11			
E-21	WTS2 - MICA PEAK INDUSTRIES - 93-105797	Logan Madson	1			10/11			
O-5	FMOD - FALLER MODULE - NEWMAN BEN A - MOD 2 -	Ethan Newman	2			10/11			
E-41	SKG2 - LOST CREEK LOGGING	Mike Aubert	2			10/12			
E-52	SKG4 - DARRELL GREEN - 031057	Steve Michlitch	2	509-322-0504		10/13			
O-53	Palm IR	Trenton Baribault	1			10/14			
E-68	AMB3 - AMBO 3	Montowski	2	509-675-7263		10/10			
O-20	EMPF - ALS - 21	Brian Spendlove	1	720-835-3145		10/12			
			21			0			
7. Control Operations:									
<b>Mop up 50' from containment lines  Grid and look for hot spots on the most southern portion of the division  Minimize threat to values at risk</b>									
8. Special Instructions:									
<b>AMB3 will be staged at DP 50, ALS 21 will be staged at DP 55</b>									
9. Communication Summary:									
Function	Name	Mode	Frequency						
PRIMARY COMMAND	CMD 2	A	154.5275	N	186.2	158.4	N	186.2	
NIGHT SHIFT COMMAND	REPUBLIC	A	159.36	N	118.8	151.235	N	118.8	
FERRY COUNTY DISPATCH	FY14REPT	A	153.845	N	91.5	158.805	N	103.5	
DIVISION W	TAC 7	A	151.625	N	186.2	151.625	N	186.2	
STRUCTURE	TAC 8	A	151.7	N	186.2	151.7	N	186.2	
A/G	DNR A/G 2	A	151.2875	N	103.5	151.2875	N	103.5	
A/G	A/G 51	A	168.3125	N	0	168.3125	N	0	
AIRGUARD	AIRGUARD	A	168.625	N	0	168.625	N	110.9	
Prepared by RESL(t) Jessica Walston		Approved by (PSC) Dusty Patrick			Date: 10/1/2024		Time: 1430		





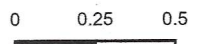
# IAP

## Goosmus

### WA-NES-002063

### 10/02/2024 day

1737 acres at 10/01/2024 @ 1135



Miles

1:38,000 | NE IMT3 Team1 | 10/1/2024 2048  
Acres from remote sensing and GPS  
North American 1983 Datum, Lat/Long Grid

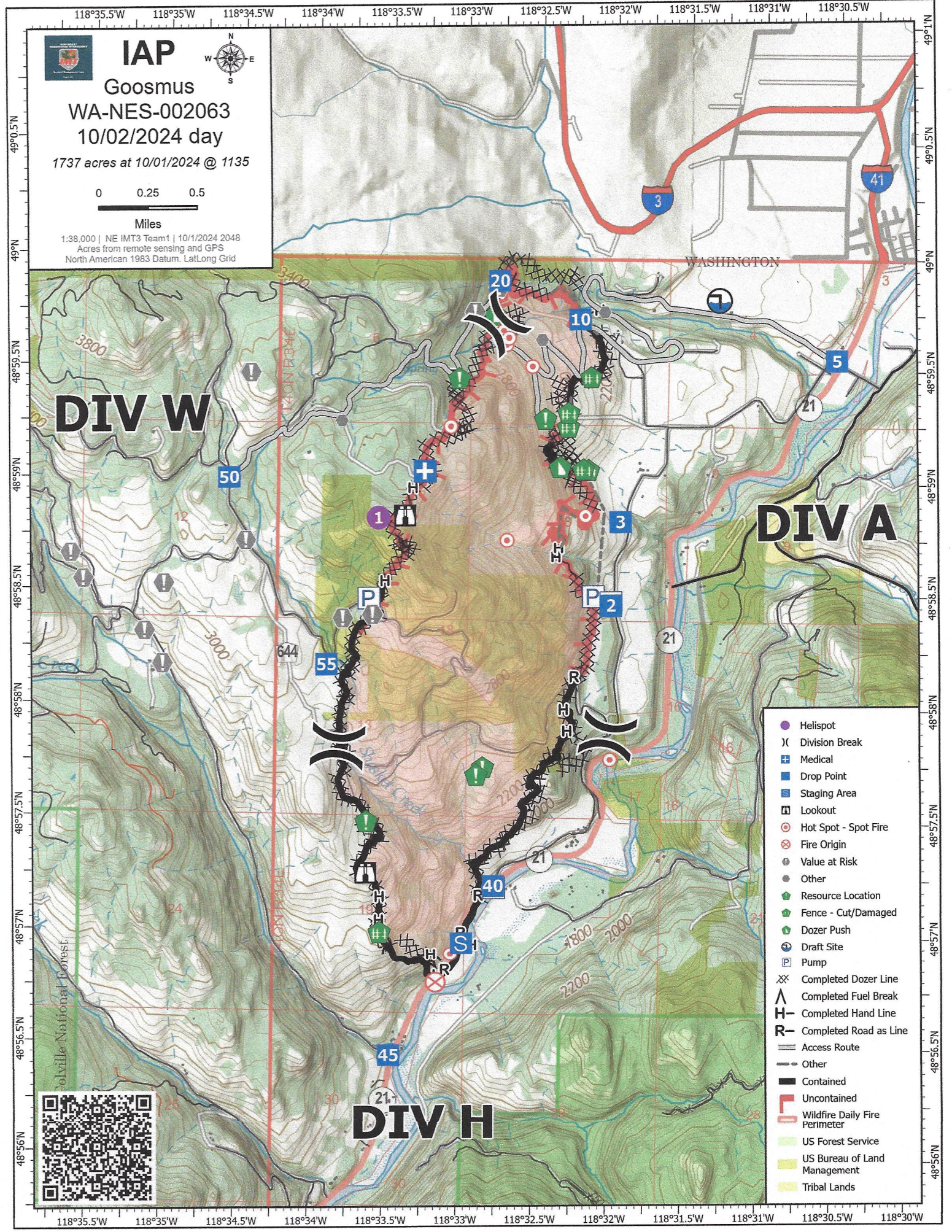


# DIV W

# DIV A

# DIV H

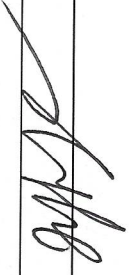
- Helispot
- Division Break
- Medical
- Drop Point
- Staging Area
- Lookout
- Hot Spot - Spot Fire
- Fire Origin
- Value at Risk
- Other
- Resource Location
- Fence - Cut/Damaged
- Dozer Push
- Draft Site
- Pump
- Completed Dozer Line
- Completed Fuel Break
- Completed Hand Line
- Completed Road as Line
- Access Route
- Other
- Contained
- Uncontained
- Wildfire Daily Fire Perimeter
- US Forest Service
- US Bureau of Land Management
- Tribal Lands





WEATHER	1. Incident Name GOOSMUS FIRE	2. Date Prepared 10/1/2024	3. Time Prepared 1500
<p>Forecast is based on forecast start time of 1330 PDT on September 30 and 0800 PDT on October 01. If conditions become unrepresentative...contact the National Weather Service.</p>			
<p><b>DISCUSSION</b> Winds with the cold front moving through the area Tuesday afternoon were expected to subside after dark early today (Wednesday), but will increase again this afternoon. Cloud cover should decrease as we continue to head into Wednesday. Moderate west to northwest winds will continue on Wednesday with slightly higher relative humidity levels. Lighter winds and milder temperatures will return by Thursday and could continue through the end of the work week.</p>			
<p><b>WEDNESDAY</b> Sky/weather.....Sunny. CWR.....0 percent. LAL.....1. Max temperature.....Around 63. Min humidity.....30 percent. Wind (20 ft).....Southwest winds 5 to 6 mph shifting to the west 6 to 10 mph with gusts to 17 mph in the afternoon. Mixing height.....6000 ft AGL in the afternoon. Transport winds.....West 8 to 15 mph. Haines Index.....2 Very Low..</p>			
<p><b>THURSDAY</b> Mostly clear. Lows in the lower 30s. Highs in the mid 60s. Light winds.</p>			
<p><b>FRIDAY</b> Partly cloudy. Lows in the lower 30s. Highs around 70. Light winds.</p>			
<p><b>SATURDAY</b> Partly cloudy. Slight chance of showers. Lows around 40. Highs in the lower 70s. Light winds.</p>			



INCIDENT RADIO COMMUNICATIONS PLAN 1-205				1. INCIDENT NAME		2. DATE/TIME PREPARED			3. OPERATIONAL PERIOD DATE/TIME		
				<b>GOOSMUS</b>		10/1/2024 1241			10/2/24 0600-2000		
4. BASIC RADIO CHANNEL UTILIZATION											
Ch #	Function	Channel Name	Assignment	RX Freq	N/W	RX Tone/NAC	TX Freq	N/W	TX Tone/NAC	Mode Analog (A) Digital (D) Mixed (M)	Remarks
1	COMMAND	CMD 1	CMD	151.5125	N	186.2	158.4075	N	186.2	A	
2	COMMAND	CMD 2	CMD	154.5275	N	186.2	158.4000	N	186.2	A	PRIMARY COMMAND
3	COMMAND	REPUBLIC	CMD	159.3600	N	118.8	151.2350	N	118.8	A	
4	COMMAND	FY14REPT	CMD	153.8450	N	91.5	158.8050	N	103.5	A	FERRY COUNTY DISPATCH
5	TAC	SILVER	TAC	163.8900	N	0.0	163.8900	N	0.0	A	DIVISION A
6	TAC	TAC 6	TAC	151.7600	N	186.2	151.7600	N	186.2	A	DIVISION H
7	TAC	TAC 7	TAC	151.6250	N	186.2	151.6250	N	186.2	A	DIVISION W
8	TAC	TAC 8	TAC	151.7000	N	186.2	151.7000	N	186.2	A	STRUCTURE
9	TAC	TAC 9	TAC	151.5050	N	186.2	151.5050	N	186.2	A	
10	TAC	REDNET	TAC	153.8300	N	0.0	153.8300	N	156.7	A	REDNET
11	TAC	VTAC 11	TAC	151.1375	N	0.0	151.1375	N	156.7	A	
12	TAC	VTAC 12	TAC	154.4525	N	0.0	154.4525	N	156.7	A	
13	TAC	OSSCR	TAC	156.1350	N	0.0	156.1350	N	203.5	A	MEDEVAC
14	A/G	DNR A/G 2	A/G	151.2875	N	103.5	151.2875	N	103.5	A	A/G PRIMARY
15	A/G	A/G 51	A/G	168.3125	N	0.0	168.3125	N	0.0	A	A/G SECONDARY
16	AIRGUARD	AIRGUARD	A/G	168.6250	N	0.0	168.6250	N	110.9	A	AIRGUARD
<b>5. Special Instructions:</b> CMD 1@ ICP AND CMD 2 ARE LINKED, VIA UHF. BATTERIES AVAILABLE AT COMMS TRAILER IN FIRE CAMP AT FAIRGROUNDS, NIGHTSHIFT WILL USE CMD 2 STARTING 10-1-24											
<b>6. 1-205 Prepared By: Communications Unit Leader</b>						<b>Name:</b> JEFFREY SMETZLER			<b>Signature:</b> 		



Incident: **Goosmus**

Date: **Wednesday, 10/02/24**

Operational Period: **Day Shift**

## **SAFETY MESSAGE**

### **SAFETY IS OUR TOP PRIORITY**

*Firefighter safety comes first on every fire, every time.*

### **MAKE SURE LCES IS IN PLACE**

Each firefighter must know the interconnection of LCES - lookouts, communications, escape routes, and safety zones. LCES should be established before engaging the fire: Select lookouts if needed and post in strategic locations, establish communications with coworkers and adjoining forces, determine escape routes and make them known, and select safety zones adequate for the fire behavior.

### **MAJOR HAZARDS AND RISKS**

- |  |  |
|--|--|
| <ul style="list-style-type: none"><li>• Snags and burned out trees —heads up!</li><li>• Fatigue – Do not drive if drowsy.</li><li>• Deer on highway dawn and dusk</li><li>• Poor visibility due to dust while driving.</li></ul> | <ul style="list-style-type: none"><li>• Lowered evacuation levels permitting more property owners into their property</li><li>• Hunters wandering through the fire area and rubbernecking while driving.</li></ul> |
|--|--|

### **TODAY'S SAFETY EMPHASIS**

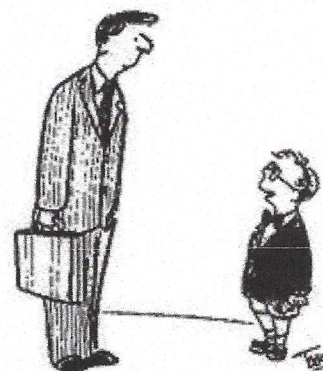
#### **INTERIOR OVERHEAD HAZARDS**

Overhead hazard snags and fire-weakened trees must be mitigated as mopup operations push deeper into the black. Do not extend operations toward the interior without checking if any overhead hazards could reach your work area.

#### **“POLITICAL” SMOKES**

The public often thinks any plume of smoke in the woods is a worry and a threat. Even though the smoke may be emanating from the middle of a vast expanse of charred black, the calls and questions still come our way to fix a perceived problem that really isn't a big deal.

Firefighters working in the public eye can play a valuable role in explaining to citizens that it's a safety issue as to why you are not chasing smoke in the interior of the fire. The perimeter is typically from where any spread would occur, not likely from out in the middle. Snags and fire-weakened trees in the interior preclude exposing firefighters to the risk of injury. Helicopters doing bucket work to knock out smokes that aren't a threat merely transfers risk to pilots that would operate in hazardous low-level flights. The fire danger is declining this fall with cooler weather, higher humidities, and shorter days. Firefighters can explain all that to the citizens they encounter in an effort to ease the pressure to go fight interior smokes for merely perceived comfort and not necessity.



"Due to the fact I'm hopelessly lost, I'm willing to waive the rule against talking to strangers."

CartoonStock.com

### **GENERAL WATCHOUTS IN PLAY (Do you see others also?)**

- #7. No communication link with crewmembers or supervisor.
- #9. Building fireline downhill with fire below.
- #15. Wind increases and/or changes direction.

Safety Officer: **Reed Heckly**





Line Safety Officer: **Mark Knokey**

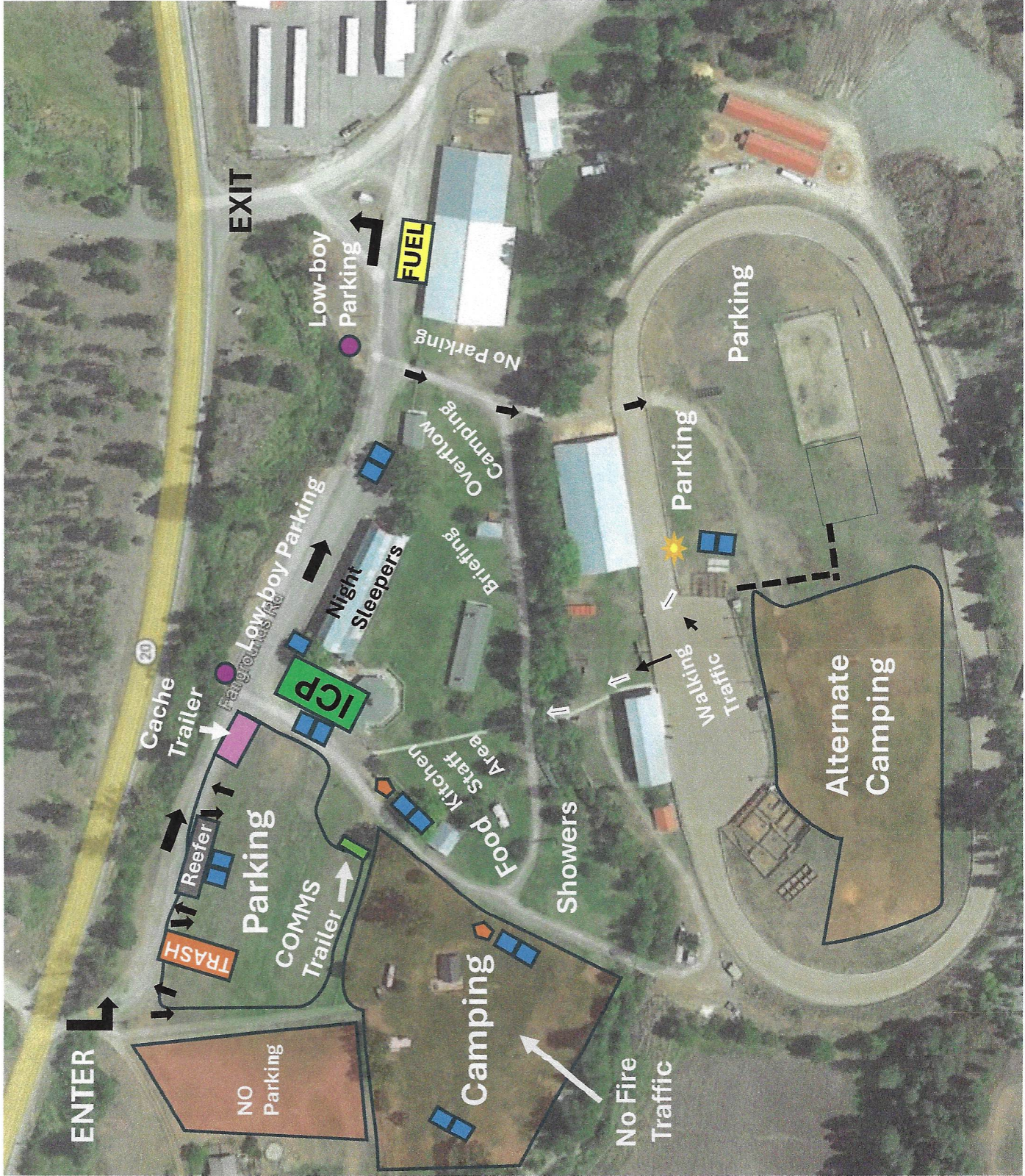


# Goosmus Fire Basecamp Map

Ferry County Fairgrounds

## LEGEND

-  Porta-johns
-  Hand washing
-  Hydrant
-  Thru-Traffic Flow





## Goosmus Fire

### LOGISTICS INFORMATION

ICP	0600-2200
FOOD	Breakfast: 0500-0800 Dinner: 1800-2100 Food times may change. Late returning to camp? Please call the Logistics Chief phone or communications via radio.
SHOWERS	Shower times will be 0500 to 1100; 1500-2300
FUELING HOURS	0530 to 2100. Fuel truck will be doing rounds during the day supplying the camp and may not always be available.

- Fuel truck available at the east end of the camp near the triangle. ***Any fuel dispensed will be a deduction from your final invoice. Have your resource order number ready.***
- Please see the map for parking and other camp information. It can change daily.
- Please pay attention to the “Entrance/Exit” signage on our maps. This is to help facilitate the morning and evening rush.
- Tenders: Please fill up at the hydrants along Fairgrounds Road during non-rush hour times. Track your gallonage on your shift tickets please.
  - The 4<sup>th</sup> of July Creek Road fill site is active. It can be a tight turn but supplies about 1,000gpm. It is just west of the Danville Post Office and marked with blue ribbon. You do not need to keep track of these fills.
- On GMs please include contact name and phone number
  - Be detailed on what you want
  - Write very clearly
  - Go through your Div Sup and Ops
- *Please keep vehicle speeds down through fire camp and adjacent roads.*
- Lunches, water, and sports drinks will be available in the reefer.
- Ice is available in the reefer as well.
- We will have a camp MEDL set up—They are operating at the ICP and have a med supply for bumps, cuts, and blisters (and other things). There is also a “sick area” set as well. If you are sick, please phone Mary Andersen at 509-680-2846. Do not come into the ICP feeling ill.



# PIO Corner

Idk Dsad  
You guys are doing a amazing job, thank you for your  
service

Lori Noel  
Praise God!!!  
Here is the Calvary 🙏🙏🙏🙏🙏🙏

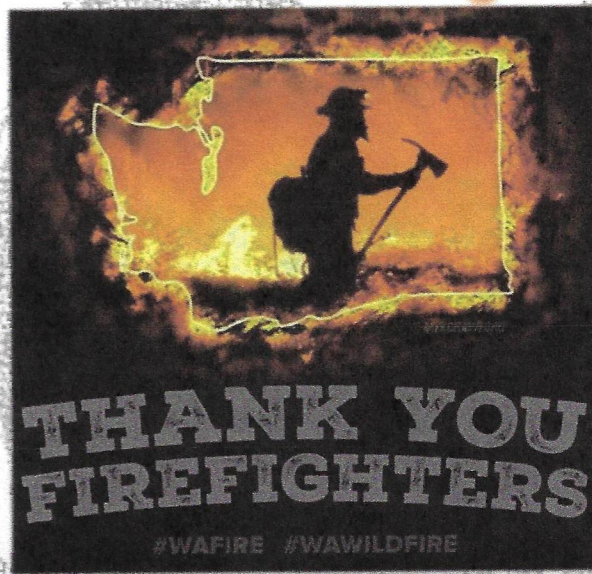
Kelly Nasmyth  
THANKYOU ! -so very much ❤️

Vicki Nichols  
Thank you firefighters and those helping praying for  
your safety

## From Our Community to You

Mary Robinson-Mohr  
Thank you, firefighters!

Alvin Denison  
YAYA THANK YOU GUYS 😊



Candy Clark  
It's going to be OK

Masha Toporowski  
Thank you for your service!

## Thank You for What You Do!

Marlowe Brown  
Thank you SO MUCH!!! You are all heroes!! 🙌🙌🙌

**We Love All Crew and Fire Photos!** Help us tell your story to the public

Text them to: 509-808-6720 or email to [WildGoatFire@gmail.com](mailto:WildGoatFire@gmail.com)

We would love to share with the community how hard you are working.

Let us know if questions arise and direct them to:

509-808-6720

Kachina Michaelson  
Prayers up for our people and first response team!!

Kathy Ducote  
Thank you for all your doing , please stay safe



**FINANCE MESSAGE**

1. Incident Name  
**Goosmus**

2. Date Prepared  
**9/29/2024**

3. Time Prepared  
**11:32**

**Please remember to keep your time up to date and CTRs turned in for a smooth demobe!**

**Please submit your original Shift Tickets and/or CTRs directly to us at morning briefing or ICP.**

**Have a safe and wonderful shift!**



**Goosmus Fire IMT TURNBACK STANDARDS**  
Bureau of Land Management - Spokane District  
Date 9/30/24

These standards may be adjusted and modified as the incident progresses but are intended to give the IMT direction for planning. Mop-up specifications and Fire Suppression Repair standards apply to BLM managed lands.

Mop-Up Specifications

Achieve 100% mop-up along and inside the fire perimeter to a distance that is adequate to ensure the perimeter is secure to prevent the fire from escaping or spotting across existing containment lines.

Spot fires outside the control lines will be 100% mopped up where appropriate to do so, a route to them will be flagged, and the perimeter of spots mapped in GIS.

Mop-up of partially burned areas further inside the lines will be determined on a case-by-case basis.

For sensitive resources within the interior of the fireline, mop-up to a level to ensure that there will be no future effects from the fire.

As mop-up specifications are met on a Division, Operations will develop a plan for the resources and equipment to be left in place that may be required for future contingency actions.

Mop-up will be verified by infrared equipment and/or gridded prior to fire turn back to Land Manager or Protecting Agency.

- Some areas may require additional mop-up commensurate with the risk of possible escape. (i.e. dirty burns)
- Mop-up around structures and infrastructure at a minimum of 100' in circumference around the structure.
- Use ground-based IR to verify mop-up percentage around structures or improvements. (mop-up cont'd)
- Fire must be secured from rolling material or falling trees crossing control lines, powerlines or roads.

Notify Agency Representative if a cultural site is found during mop-up.

Fire Suppression Repair Standards

Resource Advisors may be assigned by Agency Administrators to approve completed repair work. Resource Advisors will not guide suppression actions or decisions.

All suppression features, including but not limited to the following, will be GPS'd with Maps and GIS files given to the home unit.

- constructed fire lines (hand and dozer)
- retardant lines
- equipment left in place
- roads that were opened/closed
- road modifications such as pullouts, parking areas, turnarounds that were constructed during incident
- safety zones
- helispots



- drop points
- water sources
- other disturbed areas

Fences/gates, range developments, cattle guards, etc. damaged or destroyed by suppression activities including burnout operations or dozer line will be GPSed and GIS files given to the home unit.

Stock ponds used for drafting water will be mapped.

Specifically for this incident, turnback will include the following:

Knock down berms on all dozer lines; coordinate with managing agency [BLM REAF] to identify those which may be needed longer term.

Leave flagging in place which marks hazards, resource concerns, etc. Remove all other flagging, signs, and garbage created by the incident.

All drainages (intermittent and perennial), meadows, and springs – remove all soil, slash, and other debris that has been pushed into these areas. Streams should match natural upstream and downstream conditions.

All water drafting sites (streams and lakes) – return area to pre-fire condition.

Remove all supplies, equipment and trash not needed for contingency.

### **Handline Rehab Standards**

- Reduce berm height to less than 12 inches and blend into surrounding land.
- Water bars shall be installed to drain, roughly 45° angle downslope from contour (not parallel to contour), and placed a minimum of 50' (on slopes greater than 15% (8.5 ° gradient) to 25'-(on slopes greater than 30% (17 ° gradient)
- Ensure end of water bar is open and clear of obstructions.
- Angle handline drainage into green (unburned areas) when possible.
- Remove any brush/slash from drainages that was placed there during the fire.

### **Dozer line/4x4 roads –**

- Reduce berm height to less than 18 inches.
- Construct dozer line water bars so the bottom of the water bar (ditch) is 6" below grade.
- Dozer line water bars shall be installed to drain, not steeper than 45° angle downslope from contour and not parallel to contour and placed a minimum of 50' (on slopes greater than 15% (8.5 degrees gradient) to 25'-(on slopes greater than 30% (17 degrees gradient).
- All water bars shall be installed using an excavator or using hand work. Do not widen dozer line to install water bars.
- Ensure end of dozer line water bar is open and clear of obstructions.
- Angle dozer line drainage into green (unburned areas) when possible.
- Remove any brush/slash from drainages that was placed there during the fire.
- Disguise or block access to dozer line when possible.

### **Turn back Standards:**



Prior to turning the fire back to the local agencies turn-back standards shall be met. The Incident Commander, and BLM shall agree as minimum the following criteria.

- All mop-up standards have been met.
- Threat to the district/department is no longer viable.
- Fire District/department personnel have recovered and are ready to assume normal operations.
- Final approval for completion of Fire Suppression Repair Standards for the South Slope and Roza Slope Fires on Spokane District BLM, and private lands will be the respective Agency Representatives.
- All completed Fire Suppression Repair work will be documented including progressive reporting to the Agency Representative of completed work, GIS mapping of completed work, and may include photographs of special projects. A final report / map product documenting all completed and remaining work at time of closeout will be provided to the Agency Representative.

**Approval for Completion of Work**

**MICHELLE BROWN** Digitally signed by MICHELLE  
BROWN  
Date: 2024.10.01 10:03:30 -07'00'

Michelle L. Brown  
Deputy District Manager (Agency Administrator)  
Spokane District BLM

10/1/24  
Date



# WA DNR Mop-Up / Suppression Repair Expectations

## South Columbia Basin & Upper Cemetery Fires

These standards may be adjusted and modified as the incident progresses but are intended to give the IMT direction for planning. A map and associated shape files will be produced prior to any transfer of command. This will detail all work completed and future work needed to meet objectives.

### Mop-Up Specifications

Always consider over-head hazards prior to putting fire fighters in harm's way for mop up.

Mitigate hazards and exposure as needed.

Achieve 100% mop-up along and inside the fire perimeter to a distance that is adequate to ensure the perimeter is secure to prevent the fire from escaping across existing containment lines.

To reduce hazards to firefighters during final mop-up, fall snags that pose "imminent" danger along all open roads within the fire perimeter.

Known spot fires outside the control lines will be 100% mopped up where appropriate to do so, a route to them will be flagged, and the perimeter of spots mapped in GIS.

Mop-up of partially burned areas further inside the lines will be determined on a case-by-case basis.

For structures and sensitive resources within the interior of the fire line, mop-up to a level to ensure that there will be no further effects from the **fire**.

As mop-up specifications are met on a Division, Operations will develop a plan for the resources and equipment to be left in place that may be required for future contingency actions.

Mop-up will be verified by infrared equipment and/or gridded.

Notify Agency Representative if a cultural site is found during mop-up.



## Suppression Repair Specifications

### **All Tractor and Hand Lines**

- Place water bars on tractor and hand lines with the following spacing guidelines:
  - 6-9% slope-maximum 300' apart
  - 10-15% slope-maximum 200' apart
  - 15-25% slope-maximum 100' apart
  - 25% to 45% slope-maximum 50' apart
  - Greater than 45% slope-every 25-50'

\*\*Spacing distances above should only be used as a guide. Use judgement in locating water bars to minimize soil erosion potential.

- Pull soil, litter, duff and debris removed from the fire line back onto the line to
- cover non fire perimeter hand lines.
- Flatten large berms on all fire lines.
- Leave all freshly fallen trees as they lay. Do not limb or buck.
- Fire lines through damp or wet areas/riparian zones need to be rehabbed by hand if possible, or by the lightest equipment possible, with the least number of stream crossings. If damage is minimal, consider the possibility of not doing additional work.
- Block road access to hand and dozer lines to discourage recreational use. Attempt to visually obscure junction of line and road and make travel on first section very inconvenient (i.e. it will be too much trouble to access the line to be worth it, especially for motorcycles).
- Disperse large concentrations of unburned fuels created during suppression efforts.

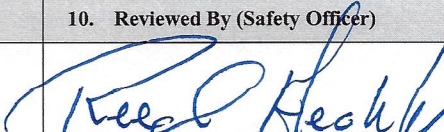
### **General Rehabilitation Concerns**

- Identify and inventory fences, signs, and other improvements damaged by the incident.
- Repair road damage incurred during incident suppression.
- Remove garbage, litter, etc, from control lines, roads, drop points, and staging areas and dispose of off-site.
- Signs/flagging removal: all signs and flagging will be removed from the fire lines, roads, drop points, staging areas, camps, and water chances.



# MEDICAL PLAN (ICS 206 WF)

Controlled Unclassified Information//Basic

<b>1. Incident/Project Name</b>				<b>2. Operational Period</b>				
WA-NES-002063 Goosmus Fire				October 2, 2024				
<b>3. Ambulance Services</b>								
Name	Complete Address	Phone & EMS Frequency		Advanced Life Support (ALS)				
				Yes	No			
Ferry County Dist. 14 Fire	24 Catherine Creek Rd Curlew, WA 99118	911/FY14 REPT		<input type="checkbox"/>	<input checked="" type="checkbox"/>			
Ferry County EMS Dist. 1	499 W 9th St Republic WA 99156	911		<input type="checkbox"/>	<input checked="" type="checkbox"/>			
<b>4. Air Ambulance Services</b>								
Name	Phone		Type of Aircraft & Capability					
Life Flight Network	800-232-0911		Helicopter, ALS					
Air Lift Northwest	800-426-2430		Helicopter, ALS					
Spokane County Sheriff – Rescue 3	509-532-8900		Huey with Hoist, ALS					
<b>5. Hospitals</b>								
Name Complete Address	GPS Datum – WGS 84 Coordinate Standard Degrees Decimal Minutes DD° MM.MMM' N - Lat DD° MM.MMM' W - Long		Travel Time		Phone	Helipad		Level of Care Facility
			Air	Gnd		Yes	No	
Ferry County Hospital 36 Klondike Road Republic, WA	Lat: 48°39.157'N Long: 118°44.062'W VHF:	10 Min	40 Min	509-775-3333	<input checked="" type="checkbox"/>	<input type="checkbox"/>	Level 4	
Providence Mt. Carmel 982 E Columbia Ave Colville, WA	Lat: 48°32.449000'N Long: 117°53.492167'W VHF:	20 Min	70 Min	509-685-5100	<input checked="" type="checkbox"/>	<input type="checkbox"/>	Level 4	
Providence Sacred Heart Medical Center 101 W 8 <sup>th</sup> Ave Spokane, WA	Lat: 47°38.947667'N Long: 117°24.784667'W VHF:	45 Min	180 Min	509-474-3131	<input checked="" type="checkbox"/>	<input type="checkbox"/>	Level 2	
Harborview Medical Center 325 9 <sup>th</sup> Ave Seattle, WA	Lat: 47°36.168833'N Long: 122°19.481000'W VHF:	90 Min	330 Min	206-223-3177	<input checked="" type="checkbox"/>	<input type="checkbox"/>	Level 1	
<b>6. Division   Branch   Group</b>		<b>Area Location Capability</b>						
A	EMS Responders & Capability:		AMBO 2					
	Equipment Available on Scene:							
	Medical Emergency Channel:		Goosmus Communications					
	ETA for Ambulance to Scene:		Air: 50 Min    Ground: 20 Min					
H	EMS Responders & Capability:							
	Equipment Available on Scene:							
	Medical Emergency Channel:		Goosmus Communications					
	ETA for Ambulance to Scene:		Air: 50 min    Ground: 20 min					
W	EMS Responders & Capability:		AMBO 3, ALS 21 Spendlove					
	Equipment Available on Scene:							
	Medical Emergency Channel:		Goosmus Communications					
	ETA for Ambulance to Scene:		Air: 50 Min    Ground: 20 Min					
<b>8. Prepared By (Medical Unit Leader)</b>			<b>9. Date/Time</b>		<b>10. Reviewed By (Safety Officer)</b>		<b>11. Date/Time</b>	
Mary Andersen			10/1/2024				10/1/2024	





# MEDICAL PLAN (ICS 206 WF)

Controlled Unclassified Information//Basic

## Medical Incident Report

**FOR A NON-EMERGENCY INCIDENT, WORK THROUGH CHAIN OF COMMAND TO REPORT AND TRANSPORT INJURED PERSONNEL AS NECESSARY.**

**FOR A MEDICAL EMERGENCY: IDENTIFY ON SCENE INCIDENT COMMANDER BY NAME AND POSITION AND ANNOUNCE "MEDICAL EMERGENCY" TO INITIATE RESPONSE FROM IMT COMMUNICATIONS/DISPATCH.**

**Use the following items to communicate situation to communications/dispatch.**

**1. CONTACT COMMUNICATIONS / DISPATCH** (Verify correct frequency prior to starting report)

*Ex: "Communications, Div. Alpha. Stand-by for Emergency Traffic."*

**2. INCIDENT STATUS:** Provide incident summary (including number of patients) and command structure.

*Ex: "Communications, I have a Red priority patient, unconscious, struck by a falling tree. Requesting air ambulance to Forest Road 1 at (Lat./Long.) This will be the Trout Meadow Medical, IC is TFLD Jones. EMT Smith is providing medical care."*

Severity of Emergency / Transport Priority	<input type="checkbox"/> <b>RED / PRIORITY 1 Life or limb threatening injury or illness. Evacuation need is IMMEDIATE</b> <i>Ex: Unconscious, difficulty breathing, bleeding severely, 2<sup>nd</sup> - 3<sup>rd</sup> burns more than 4 palm sizes, heat stroke, disoriented.</i> <input type="checkbox"/> <b>YELLOW / PRIORITY 2 Serious Injury or illness. Evacuation may be DELAYED if necessary.</b> <i>Ex: Significant trauma, unable to walk, 2<sup>nd</sup> - 3<sup>rd</sup> burns not more than 1-3 palm sizes.</i> <input type="checkbox"/> <b>GREEN / PRIORITY 3 Minor Injury or illness. Non-Emergency transport</b> <i>Ex: Sprains, strains, minor heat-related illness.</i>	
Nature of Injury or Illness & Mechanism of Injury		Brief Summary of Injury or Illness <i>(Ex: Unconscious, Struck by Falling Tree)</i>
Transport Request		Air Ambulance / Short Haul/Hoist Ground Ambulance / Other
Patient Location		Descriptive Location & Lat. / Long. (WGS84)
Incident Name		Geographic Name + "Medical" <i>(Ex: Trout Meadow Medical)</i>
On-Scene Incident Commander		Name of on-scene IC of Incident within an Incident <i>(Ex: TFLD Jones)</i>
Patient Care		Name of Care Provider <i>(Ex: EMT Smith)</i>

**3. INITIAL PATIENT ASSESSMENT:** Complete this section for each patient as applicable (start with the most severe patient)

Patient Assessment: See IRPG page 106

Treatment:

**4. TRANSPORT PLAN:**

Evacuation Location (if different): (Descriptive Location (drop point, intersection, etc.) or Lat. / Long.) Patient's ETA to Evacuation Location:

Helispot / Extraction Site Size and Hazards:

**5. ADDITIONAL RESOURCES / EQUIPMENT NEEDS:**

*Example: Paramedic/EMT, Crews, Immobilization Devices, AED, Oxygen, Trauma Bag, IV/Fluid(s), Splints, Rope rescue, Wheeled litter, HAZMAT, Extrication*

**6. COMMUNICATIONS: Identify State Air/Ground EMS Frequencies and Hospital Contacts as applicable**

Function	Channel Name/Number	Receive (RX)	Tone/NAC *	Transmit (TX)	Tone/NAC *
COMMAND					
AIR-TO-GRND					
TACTICAL					

**7. CONTINGENCY: Considerations:** If primary options fail, what actions can be implemented in conjunction with primary evacuation method? Be thinking ahead.

**8. ADDITIONAL INFORMATION:** Updates/Changes, etc.

**REMEMBER:** Confirm ETA's of resources ordered. Act according to your level of training. Be Alert. Keep Calm. Think Clearly. Act Decisively.