

DAY

INCIDENT ACTION PLAN

GOOSMUS FIRE

WA-NES-002063



For maps, evaluations, and IAPs Scan the QR Code!



Thursday, October 03, 2024  
0600-2000 Operational Period

(Charge Codes)

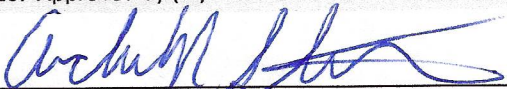
AIY-221

PN R8Z0 (1522) [P]

STATE MOBILIZATION WA-WFS-521

State and Federal cost share breakdown

AIR	Daily	Approval	GROUND	Daily	Approval
DNR	%		DNR	%	
MOB	%		MOB	%	
BLM	%		BLM	%	

<b>Incident Objectives</b>	1. Incident Name <b>GOOSMUS FIRE</b>	2. Date Prepared <b>10/2/2024</b>	3. Time Prepared <b>1000</b>
4. Operational Period (Date and Time) <b>10/3/2024                      0600-2000</b>			
5. General Control Objectives for the Incident (include Alternatives)  <ul style="list-style-type: none"> <li>• Provide for the safety of firefighters and the public through utilization of strategic and deliberate risk assessment processes. Ensure incident within an incident protocols are established and understood by all.</li> <li>• Develop strategic plans to prioritize and protect identified values at risk to the surrounding private residences and communities.</li> <li>• Engage in transparent communication with agency administrators and local fire department officials, to ensure critical information is shared during the decision-making process.</li> <li>• Enhance relationships throughout the area through communication and active involvement with the stakeholders, including; residents, public agencies, community leaders, cooperators, and landowners.</li> <li>• Maintain fiscal accountability of the incident while supporting the needs of the host agencies and the community.</li> <li>• Assist in initial attack and support as requested by the host agencies while maintaining communication and coordination.</li> </ul>			
6. Weather Forecast for Operational Period  <b>See attached weather forecast</b>			
7. General Safety Message  <ul style="list-style-type: none"> <li>• Provide for firefighter and public safety at all times.</li> <li>• Monitor compliance of 10 and 18 by all incident personnel.</li> <li>• Adhere to 2:1 work/rest ratio for all fire line personnel.</li> <li>• Aviation safety is high priority. Assess the risk against the benefit of the mission.</li> <li>• Ensure all assigned personnel understand emergency medical reporting &amp; transport procedures including locations of nearest emergency responders &amp; facilities.</li> </ul>			
8. Attachments (check if attached)			
ICS-202	9. Prepared by SITL (t) <b>Eric Krausz</b>	10. Approved by (IC) 	

<b>ORGANIZATION ASSIGNMENT LIST</b>			
1. Incident Name		<b>GOOSMUS FIRE</b>	<b>9. LOGISTICS SECTION</b>
2. Date Prepared	10/2/2024	3. Time 1000	Logs Chief Mike Bucy (O-1.12)
4. Operational Period	10/3/2024	0600-2000	Logs Chief (t) Jennifer Thompson (O-1.13)
<b>5. INCIDENT COMMANDER &amp; STAFF</b>			Logs Chief (t) Aurora Bernard (O-44)
Incident Commander	Andrew Stenbeck (O-1.1)		BCMG James Daeschler (O-1.18)
Safety Officer	Reed Heckly (O-23)		BCMG (t) Aaron Culp (O-1.14)
Safety Officer	Mark Knokey (O-51)		
MEDL	Mary Andersen (O-16)		
MEDL (t)	Dan Garner (O-24)		<b>10. OPERATIONS SECTION</b>
PIO	Isabelle Hoygaard-Reeser (O-1.16)		Field Aaron Coe (O-1.2)
PIO (t)	Jessa Lewis (O-45)		Planning Brian Hansen (O-46)
			<b>a. Division A</b>
<b>6. AGENCY REPRESENTATIVE</b>			DIVS Timothy Cawley-Murphee (O-43)
<b>Agency</b>	<b>Name</b>		DIVS (t) Austin Hatten (O-1.5)
BLM	Shevawn Sapp		<b>b. Division H</b>
BLM	Michelle Brown		DIVS (t) Brock Schuh (O-1.3)
WA DNR	Pat Ryan		
WA DNR	Brett Walker		<b>c. Division W</b>
WA DNR	Kyle Pomrankey		DIVS Daniel Montano (O-1.4)
WSP	Brian Briscoe		
Ferry County Sheriff	Ray Maycumber		<b>c. Division NIGHT</b>
Ferry Fire Chief Dist 13	Eric Hewitt		DIVS Jim Wheeler (O-50)
Ferry Fire Chief Dist 14	John Porter		
DEM	Steve Bonner		<b>11. FINANCE SECTION</b>
			FSC Michelle Leonard (v) (O-1.11)
<b>7. PLANNING SECTION</b>			FSC Marcy Johnson (O-1.10)
Planning Chief	Dusty Patrick (O-1.6)		PTRC (t) Walt Seidel (O-13)
RESL	Jessica Walston (v) (O-1.7)		
SITL (t)	Eric Krausz (O-1.8)		
GISS	Rose Beaton (v) (O-31)		
			<b>12. CONTACTS / OTHER INFORMATION</b>
<b>8. COMMUNICATIONS</b>			NEWICC (509) 685-6900
INCM	Jeff Smetzler (E-15.1)		Spokane Valley Comms: 509-389-2002
RADO	John Nelson (E-15.3)		Spot Weather: 541-276-4493
RADO (t)	Glen Schade (O-49)		
COMT	Robert Leaming (E-15.2)		
COMT	Kevin Judd (O-32)		
Prepared by:			
Eric Krausz SITL (t)			

DIVISION ASSIGNMENT LIST				1. Branch		2. Division / Group		Page 1 of 1		A		
3. Incident Name <b>GOOSMUS FIRE</b>				4. Operational Period Date: <b>10/3/2024</b> Time: <b>0600-2000</b>								
5. Operations Personnel												
Operations Chief		Aaron Coe (O-1.2)			Division/Group Supervisor		Timothy Cawley-Murphee (O-43)					
Safety Officer		Reed Heckly (O-23) & Mark Knokey (O-51)					Austin Hatten (O-1.5)					
6. Resources Assigned this Period												
RO #	Strike Team/Task Force/Resource		Leader	# People	Contact (phone, radio freq, etc.)	EMT	LWD	Remarks				
C-8.1	TFLD		Dylan Chester	1			10/10					
C-8	CR21 - NW - NES - NORTH COLUMBIA - DNR		Eric Olsen	20			10/9					
C-10	CR21 - VALHALLA CANADIAN CREW			14		3						
C-11	CR21 - SENTINEL UC - CANADIAN CREW			12		3						
O-33	SMOD - NEWAUKUM MODULE		Joshua White	9		1	10/12					
O-3	STEN(t)		Tanner Stemkoski	1			10/8					
E-3	ENG5 - 2204 - WA-PCS		Nathan Jurgensen	3		1	10/8					
E-4	ENG5 - 2405 - WA-PCS		Travis Pakenen	4		1	10/8					
E-5	ENG5 - 5302 - WA-NWS		Chad Bowman	4			10/8					
E-6	ENG5 - E8201 - WA-SPS		Myles Reed	4		1	10/8					
E-7	ENG5 - ENGINE 1301 - WAOLS (WA-OLS-E5X-1301)		Morgan Reisdorfer	4		1	10/8					
E-42	ENG6 - METHOW RIVER WILD FIRE - 500915		Andy Dalton	3			10/12					
E-43	ENG6 - METHOW RIVER WILD FIRE - 150300		Leonardo Sanche	3			10/11					
O-6	FMOD - NEWMAN BEN A		Ben Newman	2			10/11					
O-7	FELB		John Walker	1			10/12					
O-8	HEQB		Michael Correia	1			10/13					
E-2	DZR3 - PARADIGM INDUSTRIES LLC - 428862		JT Mcelhose	1			10/9					
E-17	WTS2 - SC RIVER LAND MANAGEMENT SOLUTIONS, LLC - 93-102370		TIM SCRIVER	1			10/10					
E-16	ENG5 - AR 7401 - DNR		James Spencer	4		2	10/11					
O-53	Palm IR		Trenton Baribault	1			10/14					
E-34	AMBO 2 - PECN 2		Beth Osgood	2	509-710-0472		10/11					
				95		13						
7. Work Assignments												
<p>Identify and mitigate spot fires on north end of division  Secure containment line along timbered draw west of upper Danville Road  Continue 50' mop up  Begin gridding to confirm containment lines</p>												
AMBO 2 staged at DP 5 (Post Office)												
9. Communication Summary												
Function	Name	Mode	RX FREQ	N/W	RX TONE/NAC	TX FREQ	N/W	TX TONE/NAC				
PRIMARY COMMAND	CMD 2	A	154.5275	N	186.2	158.4	N	186.2				
NIGHT SHIFT COMMAND	REPUBLIC	A	159.36	N	118.8	151.235	N	118.8				
FERRY COUNTY DISPATCH	FY14REPT	A	153.845	N	91.5	158.805	N	103.5				
DIVISION A	SILVER	A	163.89	N	0	163.89	N	0				
STRUCTURE	TAC 8	A	151.7	N	186.2	151.7	N	186.2				
A/G	DNR A/G 2	A	151.2875	N	103.5	151.2875	N	103.5				
A/G	A/G 51	A	168.3125	N	0	168.3125	N	0				
AIRGUARD	AIRGUARD	A	168.625	N	0	168.625	N	110.9				
Prepared by SITL (t) Eric Krausz			Approved by (PSC) Dusty patrick			Date: 10/2/2024		Time: 1430				

DIVISION ASSIGNMENT LIST			1. Branch		2. Division / Group			Page 2 of 2		A	
3. Incident Name				4. Operational Period							
GOOSMUS FIRE				Date: 10/3/2024				Time: 0600-2000			
5. Operations Personnel											
Operations Chief			Aaron Coe (O-1.2)			Division/Group Supervisor			Timothy Cawley-Murphee (O-43)		
Safety Officer			Reed Heckly (O-23) & Mark Knokey (O-51)						Austin Hatten (O-1.5)		
6. Resources Assigned this Period											
RO #	Strike Team/Task Force/Resource	Leader	# People	Contact (phone, radio freq, etc.)	EMT	LWD	Remarks				
O-8	HEQB	Michael Correia	1			10/13					
E-2	DZR3 - PARADIGM INDUSTRIES LLC - A29862	JT Mcelhose	1			10/9					
E-17	WTS2 - SC RIVER LAND MANAGEMENT SOLUTIONS,	TIM SCRIVER	1			10/10					
E-16	ENG5 - AR 7401 - DNR	James Spencer	4		2	10/11					
O-53	Palm IR	Trenton Baribault	1			10/14					
E-34	AMBO 2 - PECN 2	Beth Osgood	2	509-710-0472		10/11					
			10		2						
7. Work Assignments											
<p>Identify and mitigate spot fires on north end of division  Secure containment line along timbered draw west of upper Danville Road  Continue 50' mop up  Begin gridding to confirm containment lines</p>											
8. Special Instructions											
AMBO 2 staged at DP 5 (Post Office)											
9. Communication Summary											
Function	Name	Mode	RX FREQ	N/W	RX TONE/NAC	TX FREQ	N/W	TX TONE/NAC			
PRIMARY COMMAND	CMD 2	A	154.5275	N	186.2	158.4	N	186.2			
NIGHT SHIFT COMMAND	REPUBLIC	A	159.36	N	118.8	151.235	N	118.8			
FERRY COUNTY DISPATCH	FY14REPT	A	153.845	N	91.5	158.805	N	103.5			
DIVISION A	SILVER	A	163.89	N	0	163.89	N	0			
STRUCTURE	TAC 8	A	151.7	N	186.2	151.7	N	186.2			
A/G	DNR A/G 2	A	151.2875	N	103.5	151.2875	N	103.5			
A/G	A/G 51	A	168.3125	N	0	168.3125	N	0			
AIRGUARD	AIRGUARD	A	168.625	N	0	168.625	N	110.9			
Prepared by RESL(t) Jessica Walston			Approved by (PSC) Dusty Patrick			Date: 10/2/2024		Time: 1430			

DIVISION ASSIGNMENT LIST			1. Branch		2. Division / Group Page 1 of 1				H
3. Incident Name <b>GOOSMUS FIRE</b>			4. Operational Period Date: <b>10/3/2024</b> Time: <b>0600-2000</b>						
<b>5. Operations Personnel</b>									
Operations Chief		Aaron Coe (O-1.2)		Division/Group Supervisor		Brock Schuh (O-1.3)			
Safety Officer		Reed Heckly (O-23) & Mark Knokey (O-51)							
<b>6. Resources Assigned this Period</b>									
RO #	Strike Team/Task Force/Resource	Leader	# People	Contact (phone, radio freq, etc.)	EMT	LWD	Remarks		
O-18	SMOD - LACAMAS HAND CREW	Jayme Morgan	8			10/12			
O-19	SMOD - PEAK IA MODULE	Cole Phelan	11			10/11			
O-39	TFLD	Philip Shafto	1			10/12			
E-25	ENG6 - ALDER CREEK FIRE INC - B01948	Steve Ward	3			10/12			
E-40	ENG6 - THE GENERAL CONTRACTOR, LLC - B96605	Tom Adams	3			10/12			
E-45	WTS3 - CIAIS, ANDRE - 077186	Jeffery Echols	1			10/12			
			27						
<b>7. Control Operations:</b>									
<b>Mop up 100' off primary containment lines</b> <b>Reduce/mitigate hazard trees for fire fighter and public safety</b> <b>Mop up visible smoke from HWY 21</b> <b>Hand held IR 50' off all containment lines</b> <b>Minimize threat to values at risk</b>									
<b>8. Special Instructions</b>									
<b>9. Communication Summary</b>									
Function	Name	Mode	Frequency						
PRIMARY COMMAND	CMD 2	A	154.5275	N	186.2	158.4	N	186.2	
NIGHT SHIFT COMMAND	REPUBLIC	A	159.36	N	118.8	151.235	N	118.8	
FERRY COUNTY DISPATCH	FY14REPT	A	153.845	N	91.5	158.805	N	103.5	
DIVISION H	TAC 6	A	151.76	N	186.2	151.76	N	186.2	
STRUCTURE	TAC 8	A	151.7	N	186.2	151.7	N	186.2	
A/G	DNR A/G 2	A	151.2875	N	103.5	151.2875	N	103.5	
A/G	A/G 51	A	168.3125	N	0	168.3125	N	0	
AIRGUARD	AIRGUARD	A	168.625	N	0	168.625	N	110.9	
Prepared by RESL(t) Jessica Walston			Approved by (PSC) Dusty Patrick			Date: 10/2/2024		Time: 1430	

DIVISION ASSIGNMENT LIST			1. Branch		2. Division / Group Page 1 of 2				<b>W</b>
3. Incident Name <b>GOOSMUS FIRE</b>			4. Operational Period Date: <b>10/3/2024</b>		Time: <b>0600-2000</b>				
<b>5. Operations Personnel</b>									
Operations Chief		Aaron Coe (O-1.2)		Division/Group Supervisor		Daniel Montano (O-1.4)			
Safety Officer		Reed Heckly (O-23) & Mark Knokey (O-51)							
<b>6. Resources Assigned this Period</b>									
RO #	Strike Team/Task Force/Resource	Leader	# People	Contact (phone, radio freq, etc.)	EMT	LWD	Remarks		
C-4	CR21 - SRV #12	Julian Jacobo	21			10/12			
C-5	CR21 - PatRick Environmental, Inc. NCC	Garth Chambers	20			10/12			
C-6	CR21 - DIAMOND FIRE NCC 11B	Larry Eckelman	20	530-515-9139		10/12			
C-9	CR21 - NW - NES - HIGHLANDS - DNR	Seth Schertenleib	21			10/11			
O-40	TFLD	Andrew Schaffran	1			10/12			
E-22	ENG6 - BAILEY ENTERPRISES, L.L.C. -	Greg Bailey	3			10/11			
E-23	ENG6 - BLACKSTONE FORESTRY LLC - B76286	BJ Valdez	3	509-429-4262		10/11			
E-24	ENG6 - WILD FIRE SERVICES, INC - D10873	Mike Foster	3			10/11			
E-26	ENG6 - ALDER CREEK FIRE INC - E02096	Vitas Labanausk	3			10/10			
O-57	STEN	Michael Nick	1			10/5			
O-58	STEN	Keegan McCormick	1			10/5			
E-59	ENG5 - NC 7301 - DNR	Gabriel Grobбен	4			10/5			
E-60	ENG5 - NC 7307 - DNR	John Steele	4			10/5			
E-61	ENG5 - AR 7412 - DNR	Andrew J. Stenbeck	4			10/5			
E-62	ENG5 - AR 7409 - DNR	Ty Williams	4			10/5			
E-63	ENG6 - OKCN 15 - B1523	Mike Hanson	5			10/5			
E-64	ENG5 - STCN 11 - B11-15	Tyler Beer	3			10/5			
			121		0				
<b>7. Control Operations:</b>									
<b>Mop up 50' from containment lines</b> <b>Grid and look for hot spots on the most southern portion of the division</b> <b>Minimize threat to values at risk</b>									
<b>8. Special Instructions</b>									
<b>AMB3 will be staged at DP 50, ALS 21 will be staged at DP 55</b>									
<b>9. Communication Summary</b>									
Function	Name	Mode	Frequency						
PRIMARY COMMAND	CMD 2	A	154.5275	N	186.2	158.4	N	186.2	
NIGHT SHIFT COMMAND	REPUBLIC	A	159.36	N	118.8	151.235	N	118.8	
FERRY COUNTY DISPATCH	FY14REPT	A	153.845	N	91.5	158.805	N	103.5	
DIVISION W	TAC 7	A	151.625	N	186.2	151.625	N	186.2	
STRUCTURE	TAC 8	A	151.7	N	186.2	151.7	N	186.2	
A/G	DNR A/G 2	A	151.2875	N	103.5	151.2875	N	103.5	
A/G	A/G 51	A	168.3125	N	0	168.3125	N	0	
AIRGUARD	AIRGUARD	A	168.625	N	0	168.625	N	110.9	
Prepared by RESL(t) Jessica Walston		Approved by (PSC) Dusty Patrick			Date: 10/2/2024		Time: 1430		

<b>DIVISION ASSIGNMENT LIST</b>			1. Branch		2. Division / Group <b>Page 2 of 2</b>			<b>W</b>
3. Incident Name <b>GOOSMUS FIRE</b>				4. Operational Period Date: <b>10/3/2024</b> Time: <b>0600-2000</b>				
<b>5. Operations Personnel</b>								
Operations Chief		<i>Aaron Coe (O-1.2)</i>		Division/Group Supervisor		<i>Daniel Montano (O-1.4)</i>		
Safety Officer		<i>Reed Heckly (O-23) &amp; Mark Knokey (O-51)</i>						
<b>6. Resources Assigned this Period</b>								
RO #	Strike Team/Task Force/Resource	Leader	# People	Contact (phone, radio freq, etc.)	EMT	LWD	Remarks	
LOL	ENG 7109 - Republic	Wyatt Breeze	3					
LOL	ENG 7111 - Republic	Riley Rose	3					
O-9	HEQB	Timothy Bruner	1			10/11		
E-1	DZR2 - TOP GRADE EXCAVATION - 93-102575	Mike Friend	1			10/10		
E-8	DZR4 - STOTTS CONSTRUCTION, INC	Miles Anderson	1			10/10		
E-20	WTS2 - NORTHWEST TREE SERVICE -	Corey Jones	1			10/11		
E-21	WTS2 - MICA PEAK INDUSTRIES - 93-105797	Logan Madson	1			10/11		
O-5	FMOD - FALLER MODULE - NEWMAN BEN A - MOD 2 -	Ethan Newman	2			10/11		
E-41	SKG2 - LOST CREEK LOGGING	Mike Aubert	2			10/12		
E-52	SKG4 - DARRELL GREEN - 031057	Steve Michlitch	2	509-322-0504		10/13		
E-39	EXC3 - STOTTS CONSTRUCTION, INC -	Sonny Baughan	2			10/16		
E-68	AMB3 - AMBO 3	Dreyer Gliddon	2	253-303-2579 509-207-9971		10/10		
O-20	EMPF - ALS - 21	Brian Spendlove	1	720-835-3145		10/12		
			22		0			
<b>7. Control Operations:</b>								
<b>Mop up 50' from containment lines</b> <b>Grid and look for hot spots on the most southern portion of the division</b> <b>Minimize threat to values at risk</b>								
<b>8. Special Instructions:</b>								
<b>AMB3 will be staged at DP 50, ALS 21 will be staged at DP 55</b>								
<b>9. Communication Summary:</b>								
Function	Name	Mode	Frequency					
PRIMARY COMMAND	CMD 2	A	154.5275	N	186.2	158.4	N	186.2
NIGHT SHIFT COMMAND	REPUBLIC	A	159.36	N	118.8	151.235	N	118.8
FERRY COUNTY DISPATCH	FY14REPT	A	153.845	N	91.5	158.805	N	103.5
DIVISION W	TAC 7	A	151.625	N	186.2	151.625	N	186.2
STRUCTURE	TAC 8	A	151.7	N	186.2	151.7	N	186.2
A/G	DNR A/G 2	A	151.2875	N	103.5	151.2875	N	103.5
A/G	A/G 51	A	168.3125	N	0	168.3125	N	0
AIRGUARD	AIRGUARD	A	168.625	N	0	168.625	N	110.9
Prepared by RESL(t) Jessica Walston		Approved by (PSC) Dusty Patrick			Date: 10/2/2024		Time: 1430	



118°35.5'W 118°35'W 118°34.5'W 118°34'W 118°33.5'W 118°33'W 118°32.5'W 118°32'W 118°31.5'W 118°31'W 118°30.5'W



# IAP

## Goosmus

### WA-NES-002063

### 10/03/2024 day

1737 acres at 10/01/2024 @ 1135

0 0.25 0.5

Miles

1:38,000 | NE IMT3 Team1 | 10/2/2024 1622  
Acres from remote sensing and GPS  
North American 1983 Datum, Lat/Long Grid



49°0.5'N  
48°59.5'N  
48°59'N  
48°58.5'N  
48°58'N  
48°57.5'N  
48°57'N  
48°56.5'N  
48°56'N

49°1'N  
49°0.5'N  
49°N  
48°59.5'N  
48°59'N  
48°58.5'N  
48°58'N  
48°57.5'N  
48°57'N  
48°56.5'N  
48°56'N

# DIV W

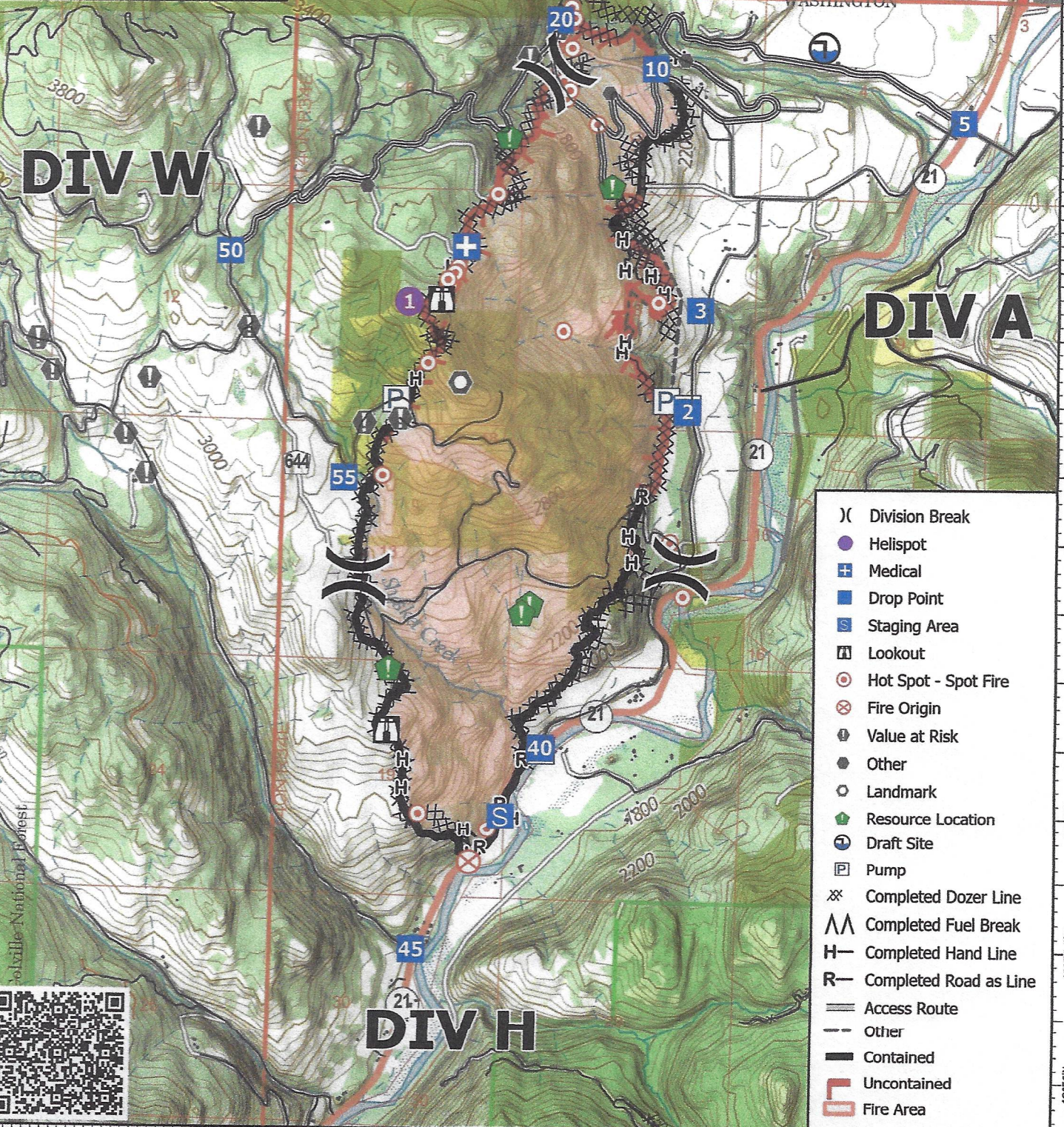
# DIV A

# DIV H


- (X) Division Break
- Helispot
- + Medical
- Drop Point
- Staging Area
- ⚠ Lookout
- ⊙ Hot Spot - Spot Fire
- ⊗ Fire Origin
- ⚠ Value at Risk
- Other
- Landmark
- 📍 Resource Location
- ⚙ Draft Site
- ⚙ Pump
- ⊗ Completed Dozer Line
- ⚡ Completed Fuel Break
- H Completed Hand Line
- R Completed Road as Line
- Access Route
- - - Other
- ▬ Contained
- ▬ Uncontained
- ▬ Fire Area



Seville National Forest



WEATHER	1. Incident Name GOOSMUS FIRE	2. Date Prepared 10/2/2024	3. Time Prepared 1000
<p>Forecast is based on start time of 1200 PDT on October 02. If conditions become unrepresentative...contact the National Weather Service.</p>			
<p><b><u>.DISCUSSION.</u></b> Through Thursday will be mostly sunny with afternoon temperatures in the 60s. West to Northwest winds will stay in the teens through early evening. Winds will be lighter and terrain driven on Thursday. A cold front on Friday will bring gusty west to northwest winds to the Goosmus area with gusts 25 to 30 mph late Friday morning through the early evening. The chance of wetting rain with Friday's front is less than 5 percent.</p>			
<p><b><u>.REST OF TODAY..</u></b> Sky/weather.....Sunny. CWR.....0 percent. LAL.....1. Max temperature.....Around 63. Min humidity.....31 percent. Wind (20 ft).....West winds 8 to 14 mph. Mixing height.....8500 ft AGL. Transport winds.....Northwest around 15 mph. Haines Index.....2 Very Low.</p>			
<p><b><u>.TONIGHT..</u></b> Sky/weather.....Mostly clear. Widespread frost overnight. CWR.....0 percent. LAL.....1. Min temperature.....Around 31. Max humidity.....94 percent. Wind (20 ft).....West winds 5 to 10 mph in the evening becoming light variable terrain driven. Mixing height.....4000 ft AGL falling to 2000 ft AGL. Transport winds.....West 6 to 10 mph. Haines Index.....3 Very Low.</p>			
<p><b><u>.THURSDAY..</u></b> Sky/weather.....Sunny. Widespread frost and patchy fog in the morning. CWR.....0 percent. LAL.....1. Max temperature.....Around 66. Min humidity.....32 percent. Wind (20 ft).....Light winds. Mixing height.....4000 ft AGL increasing to 6000 ft AGL in the afternoon. Transport winds.....Light winds becoming southeast around 6 mph in the afternoon. Haines Index.....4 Low.</p>			
<p><b><u>.THURSDAY NIGHT..</u></b> Sky/weather.....Mostly cloudy then becoming partly cloudy. Areas of frost overnight. CWR.....0 percent. LAL.....1. Min temperature.....Around 35. Max humidity.....76 percent. Wind (20 ft).....Light winds. Mixing height.....4000 ft AGL falling to 1500 ft AGL decreasing to 2000 ft AGL overnight. Transport winds.....Southeast around 7 mph. Haines Index.....4 Low.</p>			
<p><b><u>.FRIDAY..</u></b> Sky/weather.....Partly sunny then becoming cloudy. Chance of rain showers. CWR.....5 percent. LAL.....1. Max temperature.....Around 62. Min humidity.....43 percent. Wind (20 ft).....Light winds becoming west around 8 to 12 mph with gusts of 25 mph in the after 11AM. Mixing height.....3000 ft AGL increasing to 4500 ft AGL in the afternoon. Transport winds.....Southeast around 8 mph shifting to the southwest around 30 mph in the afternoon. Haines Index.....4 Low.</p>			

INCIDENT RADIO COMMUNICATIONS PLAN I-205		1. INCIDENT NAME		2. DATE/TIME PREPARED		3. OPERATIONAL PERIOD DATE/TIME					
		<b>GOOSMUS</b>		10/2/2024 1105		10/3/24 0600- 2000					
4. BASIC RADIO CHANNEL UTILIZATION											
Ch #	Function	Channel Name	Assignment	RX Freq	NW	RX Tone/NAC	TX Freq	NW	TX Tone/NAC	Mode Analog (A) Digital (D) Mixed (M)	Remarks
1	COMMAND	CMD 1	CMD	151.5125	N	186.2	158.4075	N	186.2	A	
2	COMMAND	CMD 2	CMD	154.5275	N	186.2	158.4000	N	186.2	A	PRIMARY COMMAND
3	COMMAND	REPUBLIC	CMD	159.3600	N	118.8	151.2350	N	118.8	A	
4	COMMAND	FY14REPT	CMD	153.8450	N	91.5	158.8050	N	103.5	A	FERRY COUNTY DISPATCH
5	TAC	SILVER	TAC	163.8900	N	0.0	163.8900	N	0.0	A	DIVISION A
6	TAC	TAC 6	TAC	151.7600	N	186.2	151.7600	N	186.2	A	DIVISION H
7	TAC	TAC 7	TAC	151.6250	N	186.2	151.6250	N	186.2	A	DIVISION W
8	TAC	TAC 8	TAC	151.7000	N	186.2	151.7000	N	186.2	A	STRUCTURE
9	TAC	TAC 9	TAC	151.5050	N	186.2	151.5050	N	186.2	A	
10	TAC	REDNET	TAC	153.8300	N	0.0	153.8300	N	156.7	A	REDNET
11	TAC	VTAC 11	TAC	151.1375	N	0.0	151.1375	N	156.7	A	
12	TAC	VTAC 12	TAC	154.4525	N	0.0	154.4525	N	156.7	A	
13	TAC	OSSCR	TAC	156.1350	N	0.0	156.1350	N	203.5	A	MEDEVAC
14	A/G	DNR A/G 2	A/G	151.2875	N	103.5	151.2875	N	103.5	A	A/G PRIMARY
15	A/G	A/G 51	A/G	168.3125	N	0.0	168.3125	N	0.0	A	A/G SECONDARY
16	AIRGUARD	AIRGUARD	A/G	168.6250	N	0.0	168.6250	N	110.9	A	AIRGUARD
<b>5. Special Instructions:</b>		CMD 1 @ ICP AND CMD 2 ARE LINKED, VIA UHF. BATTERIES AVAILABLE AT COMMS TRAILER IN FIRE CAMP AT FAIRGROUNDS, NIGHTSHIFT WILL USE CMD 2 STARTING 10-1-24									
<b>6. I-205 Prepared By:</b>		Communications Unit Leader		Name:		JEFFREY SMETZLER		Signature:			

**SAFETY MESSAGE**

**SAFETY IS OUR TOP PRIORITY**

*Firefighter safety comes first on every fire, every time.*

**MAKE SURE LCES IS IN PLACE**

Each firefighter must know the interconnection of LCES - lookouts, communications, escape routes, and safety zones. LCES should be established before engaging the fire: Select lookouts if needed and post in strategic locations, establish communications with coworkers and adjoining forces, determine escape routes and make them known, and select safety zones adequate for the fire behavior.

**MAJOR HAZARDS AND RISKS**

- |   |   |
|---|---|
| <ul style="list-style-type: none"> <li>• Snags and burned out trees —heads up!</li> <li>• Fatigue – Do not drive if drowsy.</li> <li>• Deer on highway dawn and dusk</li> <li>• Poor visibility due to dust while driving.</li> <li>• Complacency creep.</li> </ul> | <ul style="list-style-type: none"> <li>• Lowered evacuation levels permitting more property owners into their property</li> <li>• Hunters wandering through the fire area and rubbernecking while driving.</li> </ul> |
|---|---|

**TODAY'S SAFETY EMPHASIS**

**PULLING, LIFTING, CARRYING, HAULING**

As the fire winds down and equipment gets brought back in from the line, the risk of injury increases as personnel strain to manage heavy objects. Being mindful about lifting technique will avoid back injury and worse.

**Pulling Hose:** Be careful about twisting motions while pulling. Pull straight on, and don't let a snagged hose snap back and smack the puller.

**Lifting:** Lift heavy objects straight on while keeping the back straight and using legs for the main force. Never twist your spine while lifting. Get help if an object is very heavy.



**Carrying:** Watch footing. Don't carry blindly. Remove trip hazards - have a clear path.

**Hauling:** Don't overload a vehicle. Use multiple vehicles if necessary. Secure loads so they lie within the truck bed or are strapped down.



**GENERAL WATCHOUTS IN PLAY (Do you see others also?)**

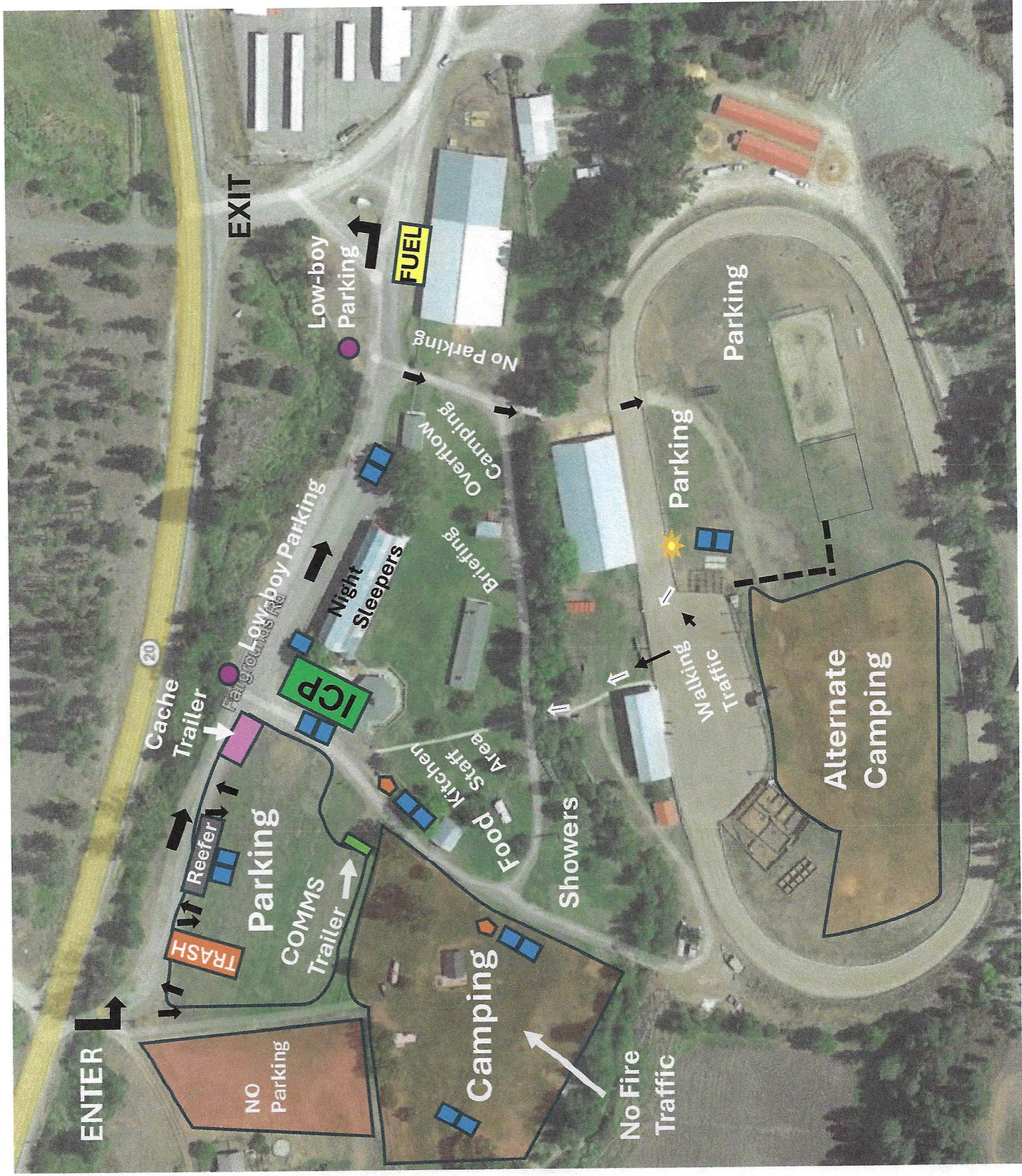
- #5. Uninformed on strategy, tactics, and hazards.

# Goosmus Fire Basecamp Map

Ferry County Fairgrounds

**LEGEND**

- Porta-johns
- Hand washing
- Hydrant
- Thru-Traffic Flow



## Goosmus Fire LOGISTICS INFORMATION

ICP	0600-2200
FOOD	Breakfast: 0500-0800 Dinner: 1800-2100 Food times may change. Late returning to camp? Please call the Logistics Chief phone or communications via radio.
SHOWERS	Shower times will be 0500 to 1100; 1500-2300
FUELING HOURS	0530 to 2100. Fuel truck will be doing rounds during the day supplying the camp and may not always be available.

- Fuel truck available at the east end of the camp near the triangle. ***Any fuel dispensed will be a deduction from your final invoice. Have your resource order number ready.***
- Please see the map for parking and other camp information. It can change daily.
- Please pay attention to the “Entrance/Exit” signage on our maps. This is to help facilitate the morning and evening rush.
- Tenders: Please fill up at the hydrants along Fairgrounds Road during non-rush hour times. Track your gallonage on your shift tickets please.
  - The 4<sup>th</sup> of July Creek Road fill site is active. It can be a tight turn but supplies about 1,000gpm. It is just west of the Danville Post Office and marked with blue ribbon. You do not need to keep track of these fills.
- On GMs please include contact name and phone number
  - Be detailed on what you want
  - Write very clearly
  - Go through your Div Sup and Ops
- *Please keep vehicle speeds down through fire camp and adjacent roads.*
- Lunches, water, and sports drinks will be available in the reefer.
- Ice is available in the reefer as well.
- We will have a camp MEDL set up—They are operating at the ICP and have a med supply for bumps, cuts, and blisters (and other things). There is also a “sick area” set as well. If you are sick, please phone Mary Andersen at 509-680-2846. Do not come into the ICP feeling ill.

# PIO Corner

Idk Dsad  
You guys are doing a amazing job, thank you for your  
service

Lori Noel  
Praise God!!!  
Here is the Calvary 🙏🙏🙏🙏🙏🙏

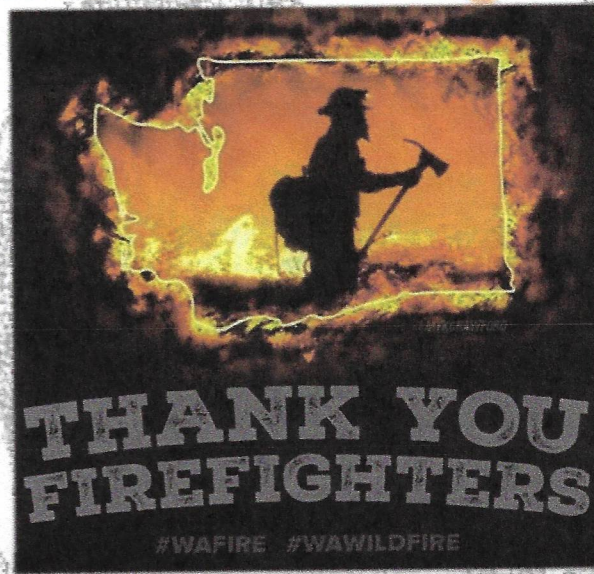
Kelly Nasmyth  
THANKYOU ! -so very much ❤️

Vicki Nichols  
Thank you firefighters and those helping praying for  
your safety

## From Our Community to You

Mary Robinson-Mohr  
Thank you, firefighters!

Alvin Denison  
YAYA THANK YOU GUYS 😊



Candy Clark  
It's going to be OK

Masha Toporowski  
Thank you for your service!

## Thank You for What You Do!

Marlowe Brown  
Thank you SO MUCH!!! You are all heroes!! 🙌🏆🙌

**We Love All Crew and Fire Photos!** Help us tell your story to the public

Text them to: 509-808-6720 or email to [WildGoatFire@gmail.com](mailto:WildGoatFire@gmail.com)

We would love to share with the community how hard you are working.

Let us know if questions arise and direct them to:

509-808-6720

Kachina Michaelson  
Prayers up for our people and first response team!!

Kathy Ducote  
Thank you for all your doing , please stay safe

<b>FINANCE MESSAGE</b>	1. Incident Name <b>Goosmus</b>	2. Date Prepared <b>9/29/2024</b>	3. Time Prepared <b>11:32</b>
------------------------	------------------------------------	--------------------------------------	----------------------------------

**Please remember to keep your time up to date and CTRs turned in for a smooth demobe!**

**Please submit your original Shift Tickets and/or CTRs directly to us at morning briefing or ICP.**

**Have a safe and wonderful shift!**



**Goosmus Fire IMT TURNBACK STANDARDS**  
Bureau of Land Management - Spokane District  
Date 9/30/24

These standards may be adjusted and modified as the incident progresses but are intended to give the IMT direction for planning. Mop-up specifications and Fire Suppression Repair standards apply to BLM managed lands.

Mop-Up Specifications

Achieve 100% mop-up along and inside the fire perimeter to a distance that is adequate to ensure the perimeter is secure to prevent the fire from escaping or spotting across existing containment lines.

Spot fires outside the control lines will be 100% mopped up where appropriate to do so, a route to them will be flagged, and the perimeter of spots mapped in GIS.

Mop-up of partially burned areas further inside the lines will be determined on a case-by-case basis.

For sensitive resources within the interior of the fireline, mop-up to a level to ensure that there will be no future effects from the fire.

As mop-up specifications are met on a Division, Operations will develop a plan for the resources and equipment to be left in place that may be required for future contingency actions.

Mop-up will be verified by infrared equipment and/or gridded prior to fire turn back to Land Manager or Protecting Agency.

- Some areas may require additional mop-up commensurate with the risk of possible escape. (i.e. dirty burns)
- Mop-up around structures and infrastructure at a minimum of 100' in circumference around the structure.
- Use ground-based IR to verify mop-up percentage around structures or improvements. (mop-up cont'd)
- Fire must be secured from rolling material or falling trees crossing control lines, powerlines or roads.

Notify Agency Representative if a cultural site is found during mop-up.

Fire Suppression Repair Standards

Resource Advisors may be assigned by Agency Administrators to approve completed repair work. Resource Advisors will not guide suppression actions or decisions.

All suppression features, including but not limited to the following, will be GPS'd with Maps and GIS files given to the home unit.

- constructed fire lines (hand and dozer)
- retardant lines
- equipment left in place
- roads that were opened/closed
- road modifications such as pullouts, parking areas, turnarounds that were constructed during incident
- safety zones
- helispots

- drop points
- water sources
- other disturbed areas

Fences/gates, range developments, cattle guards, etc. damaged or destroyed by suppression activities including burnout operations or dozer line will be GPSed and GIS files given to the home unit.

Stock ponds used for drafting water will be mapped.

Specifically for this incident, turnback will include the following:

Knock down berms on all dozer lines; coordinate with managing agency [BLM REAF] to identify those which may be needed longer term.

Leave flagging in place which marks hazards, resource concerns, etc. Remove all other flagging, signs, and garbage created by the incident.

All drainages (intermittent and perennial), meadows, and springs – remove all soil, slash, and other debris that has been pushed into these areas. Streams should match natural upstream and downstream conditions.

All water drafting sites (streams and lakes) – return area to pre-fire condition.

Remove all supplies, equipment and trash not needed for contingency.

### **Handline Rehab Standards**

- Reduce berm height to less than 12 inches and blend into surrounding land.
- Water bars shall be installed to drain, roughly 45° angle downslope from contour (not parallel to contour), and placed a minimum of 50' (on slopes greater than 15% (8.5° gradient) to 25'-(on slopes greater than 30% (17° gradient)
- Ensure end of water bar is open and clear of obstructions.
- Angle handline drainage into green (unburned areas) when possible.
- Remove any brush/slash from drainages that was placed there during the fire.

### **Dozer line/4x4 roads –**

- Reduce berm height to less than 18 inches.
- Construct dozer line water bars so the bottom of the water bar (ditch) is 6" below grade.
- Dozer line water bars shall be installed to drain, not steeper than 45° angle downslope from contour and not parallel to contour and placed a minimum of 50' (on slopes greater than 15% (8.5 degrees gradient) to 25'-(on slopes greater than 30% (17 degrees gradient).
- All water bars shall be installed using an excavator or using hand work. Do not widen dozer line to install water bars.
- Ensure end of dozer line water bar is open and clear of obstructions.
- Angle dozer line drainage into green (unburned areas) when possible.
- Remove any brush/slash from drainages that was placed there during the fire.
- Disguise or block access to dozer line when possible.

### **Turn back Standards:**

Prior to turning the fire back to the local agencies turn-back standards shall be met. The Incident Commander, and BLM shall agree as minimum the following criteria.

- All mop-up standards have been met.
- Threat to the district/department is no longer viable.
- Fire District/department personnel have recovered and are ready to assume normal operations.
- Final approval for completion of Fire Suppression Repair Standards for the South Slope and Roza Slope Fires on Spokane District BLM, and private lands will be the respective Agency Representatives.
- All completed Fire Suppression Repair work will be documented including progressive reporting to the Agency Representative of completed work, GIS mapping of completed work, and may include photographs of special projects. A final report / map product documenting all completed and remaining work at time of closeout will be provided to the Agency Representative.

**Approval for Completion of Work**

**MICHELLE BROWN** Digitally signed by MICHELLE  
BROWN  
Date: 2024.10.01 10:03:30 -07'00'

**10/1/24**

Date

Michelle L. Brown  
Deputy District Manager (Agency Administrator)  
Spokane District BLM

# WA DNR Mop-Up / Suppression Repair Expectations

## South Columbia Basin & Upper Cemetery Fires

These standards may be adjusted and modified as the incident progresses but are intended to give the IMT direction for planning. A map and associated shape files will be produced prior to any transfer of command. This will detail all work completed and future work needed to meet objectives.

### Mop-Up Specifications

Always consider over-head hazards prior to putting fire fighters in harm's way for mop up.

Mitigate hazards and exposure as needed.

Achieve 100% mop-up along and inside the fire perimeter to a distance that is adequate to ensure the perimeter is secure to prevent the fire from escaping across existing containment lines.

To reduce hazards to firefighters during final mop-up, fall snags that pose "imminent" danger along all open roads within the fire perimeter.

Known spot fires outside the control lines will be 100% mopped up where appropriate to do so, a route to them will be flagged, and the perimeter of spots mapped in GIS.

Mop-up of partially burned areas further inside the lines will be determined on a case-by-case basis.

For structures and sensitive resources within the interior of the fire line, mop-up to a level to ensure that there will be no further effects from the **fire**.

As mop-up specifications are met on a Division, Operations will develop a plan for the resources and equipment to be left in place that may be required for future contingency actions.

Mop-up will be verified by infrared equipment and/or gridded.

Notify Agency Representative if a cultural site is found during mop-up.

### Suppression Repair Specifications

## All Tractor and Hand Lines

- Place water bars on tractor and hand lines with the following spacing guidelines:
  - 6-9% slope-maximum 300' apart
  - 10-15% slope-maximum 200' apart
  - 15-25% slope-maximum 100' apart
  - 25% to 45% slope-maximum 50' apart
  - Greater than 45% slope-every 25-50'

\*\*Spacing distances above should only be used as a guide. Use judgement in locating water bars to minimize soil erosion potential.

- Pull soil, litter, duff and debris removed from the fire line back onto the line to
- cover non fire perimeter hand lines.
- Flatten large berms on all fire lines.
- Leave all freshly fallen trees as they lay. Do not limb or buck.
- Fire lines through damp or wet areas/riparian zones need to be rehabbed by hand if possible, or by the lightest equipment possible, with the least number of stream crossings. If damage is minimal, consider the possibility of not doing additional work.
- Block road access to hand and dozer lines to discourage recreational use. Attempt to visually obscure junction of line and road and make travel on first section very inconvenient (i.e. it will be too much trouble to access the line to be worth it, especially for motorcycles).
- Disperse large concentrations of unburned fuels created during suppression efforts.

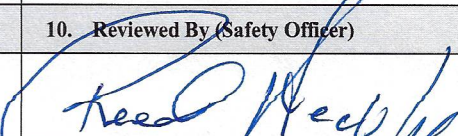
## General Rehabilitation Concerns

- Identify and inventory fences, signs, and other improvements damaged by the incident.
- Repair road damage incurred during incident suppression.
- Remove garbage, litter, etc, from control lines, roads, drop points, and staging areas and dispose of off-site.
- Signs/flagging removal: all signs and flagging will be removed from the fire lines, roads, drop points, staging areas, camps, and water chances.



# MEDICAL PLAN (ICS 206 WF)

Controlled Unclassified Information//Basic

<b>1. Incident/Project Name</b>				<b>2. Operational Period</b>					
WA-NES-002063 Goosmus Fire				October 3, 2024					
<b>3. Ambulance Services</b>									
Name	Complete Address	Phone & EMS Frequency		Advanced Life Support (ALS)					
				Yes	No				
Pend Oreille	390442 St Route 20, Ione WA	911		<input type="checkbox"/>	<input checked="" type="checkbox"/>				
Ferry County EMS Dist. 1	499 W 9th St Republic WA 99156	911		<input type="checkbox"/>	<input checked="" type="checkbox"/>				
<b>4. Air Ambulance Services</b>									
Name	Phone	Type of Aircraft & Capability							
Life Flight Network	800-232-0911	Helicopter, ALS							
Air Lift Northwest	800-426-2430	Helicopter, ALS							
Spokane County Sheriff – Rescue 3	509-532-8900	Huey with Hoist, ALS							
<b>5. Hospitals</b>									
Name Complete Address	GPS Datum – WGS 84 Coordinate Standard Degrees Decimal Minutes DD° MM.MMM' N - Lat DD° MM.MMM' W - Long		Travel Time Air      Gnd		Phone	Helipad Yes    No		Level of Care Facility	
	Lat:					<input type="checkbox"/>	<input type="checkbox"/>		
Ferry County Hospital 36 Klondike Road Republic, WA	Long:	48°39.157'N		10 Min	40 Min	509-775-3333	<input type="checkbox"/>	<input type="checkbox"/>	Level 4
	VHF:						<input type="checkbox"/>	<input type="checkbox"/>	
Providence Mt. Carmel 982 E Columbia Ave Colville, WA	Long:	48°32.449000'N		20 Min	70 Min	509-685-5100	<input type="checkbox"/>	<input type="checkbox"/>	Level 4
	VHF:						<input type="checkbox"/>	<input type="checkbox"/>	
Providence Sacred Heart Medical Center 101 W 8 <sup>th</sup> Ave Spokane, WA	Long:	47°38.947667'N		45 Min	180 Min	509-474-3131	<input type="checkbox"/>	<input type="checkbox"/>	Level 2
	VHF:						<input type="checkbox"/>	<input type="checkbox"/>	
Harborview Medical Center 325 9 <sup>th</sup> Ave Seattle, WA	Long:	47°36.168833'N		90 Min	330 Min	206-223-3177	<input type="checkbox"/>	<input type="checkbox"/>	Level 1
	VHF:						<input type="checkbox"/>	<input type="checkbox"/>	
<b>6. Division   Branch   Group</b>			<b>Area Location Capability</b>						
A	<b>EMS Responders &amp; Capability:</b>		AMBO 2						
	<b>Equipment Available on Scene:</b>								
	<b>Medical Emergency Channel:</b>		Goosmus Communications						
	<b>ETA for Ambulance to Scene:</b>		Air: 50 Min    Ground: 20 Min						
H	<b>EMS Responders &amp; Capability:</b>								
	<b>Equipment Available on Scene:</b>								
	<b>Medical Emergency Channel:</b>		Goosmus Communications						
	<b>ETA for Ambulance to Scene:</b>		Air: 50 min    Ground: 20 min						
W	<b>EMS Responders &amp; Capability:</b>		AMBO 3, ALS 21 Spendlove						
	<b>Equipment Available on Scene:</b>								
	<b>Medical Emergency Channel:</b>		Goosmus Communications						
	<b>ETA for Ambulance to Scene:</b>		Air: 50 Min    Ground: 20 Min						
<b>8. Prepared By (Medical Unit Leader)</b>			<b>9. Date/Time</b>		<b>10. Reviewed By (Safety Officer)</b>		<b>11. Date/Time</b>		
Mary Andersen			10/2/2024				10/2/2024		

# MEDICAL PLAN (ICS 206 WF)

Controlled Unclassified Information//Basic

## Medical Incident Report

**FOR A NON-EMERGENCY INCIDENT, WORK THROUGH CHAIN OF COMMAND TO REPORT AND TRANSPORT INJURED PERSONNEL AS NECESSARY.**

**FOR A MEDICAL EMERGENCY: IDENTIFY ON SCENE INCIDENT COMMANDER BY NAME AND POSITION AND ANNOUNCE "MEDICAL EMERGENCY" TO INITIATE RESPONSE FROM IMT COMMUNICATIONS/DISPATCH.**

**Use the following items to communicate situation to communications/dispatch.**

**1. CONTACT COMMUNICATIONS / DISPATCH** (Verify correct frequency prior to starting report)

*Ex: "Communications, Div. Alpha. Stand-by for Emergency Traffic."*

**2. INCIDENT STATUS:** Provide incident summary (including number of patients) and command structure.

*Ex: "Communications, I have a Red priority patient, unconscious, struck by a falling tree. Requesting air ambulance to Forest Road 1 at (Lat./Long.) This will be the Trout Meadow Medical, IC is TFLD Jones. EMT Smith is providing medical care."*

Severity of Emergency / Transport Priority	<input type="checkbox"/> <b>RED / PRIORITY 1 Life or limb threatening injury or illness. Evacuation need is IMMEDIATE</b> <i>Ex: Unconscious, difficulty breathing, bleeding severely, 2° – 3° burns more than 4 palm sizes, heat stroke, disoriented.</i> <input type="checkbox"/> <b>YELLOW / PRIORITY 2 Serious Injury or illness. Evacuation may be DELAYED if necessary.</b> <i>Ex: Significant trauma, unable to walk, 2° – 3° burns not more than 1-3 palm sizes.</i> <input type="checkbox"/> <b>GREEN / PRIORITY 3 Minor Injury or illness. Non-Emergency transport</b> <i>Ex: Sprains, strains, minor heat-related illness.</i>	
Nature of Injury or Illness & Mechanism of Injury		Brief Summary of Injury or Illness <i>(Ex: Unconscious, Struck by Falling Tree)</i>
Transport Request		Air Ambulance / Short Haul/Hoist Ground Ambulance / Other
Patient Location		Descriptive Location & Lat. / Long. (WGS84)
Incident Name		Geographic Name + "Medical" <i>(Ex: Trout Meadow Medical)</i>
On-Scene Incident Commander		Name of on-scene IC of Incident within an Incident <i>(Ex: TFLD Jones)</i>
Patient Care		Name of Care Provider <i>(Ex: EMT Smith)</i>

**3. INITIAL PATIENT ASSESSMENT:** Complete this section for each patient as applicable (start with the most severe patient)

Patient Assessment: See IRPG page 106

Treatment:

**4. TRANSPORT PLAN:**

Evacuation Location (if different): (Descriptive Location (drop point, intersection, etc.) or Lat. / Long.) Patient's ETA to Evacuation Location:

Helispot / Extraction Site Size and Hazards:

**5. ADDITIONAL RESOURCES / EQUIPMENT NEEDS:**

*Example: Paramedic/EMT, Crews, Immobilization Devices, AED, Oxygen, Trauma Bag, IV/Fluid(s), Splints, Rope rescue, Wheeled litter, HAZMAT, Extrication*

**6. COMMUNICATIONS: Identify State Air/Ground EMS Frequencies and Hospital Contacts as applicable**

Function	Channel Name/Number	Receive (RX)	Tone/NAC *	Transmit (TX)	Tone/NAC *
COMMAND					
AIR-TO-GRND					
TACTICAL					

**7. CONTINGENCY: Considerations:** If primary options fail, what actions can be implemented in conjunction with primary evacuation method? Be thinking ahead.

**8. ADDITIONAL INFORMATION:** Updates/Changes, etc.

**REMEMBER:** Confirm ETA's of resources ordered. Act according to your level of training. Be Alert. Keep Calm. Think Clearly. Act Decisively.