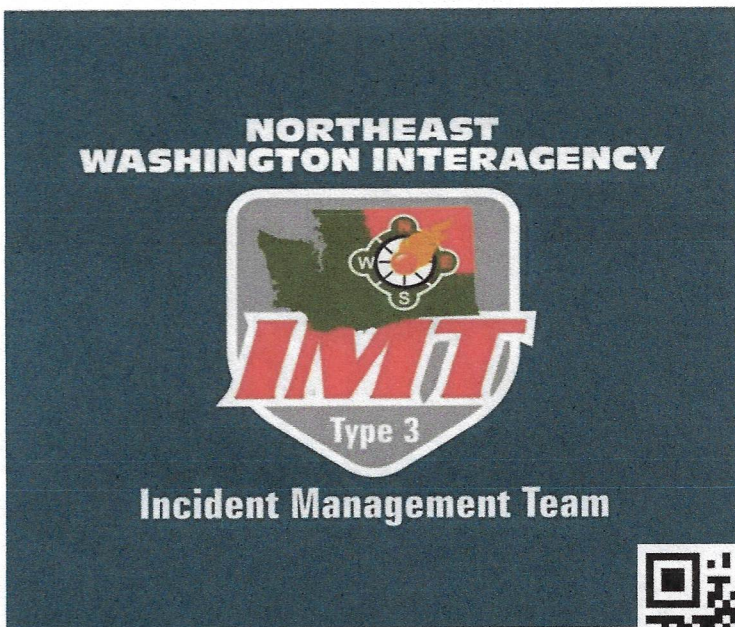


DAY

INCIDENT ACTION PLAN

GOOSMUS FIRE

WA-NES-002063



For maps, evaluations, and IAPs Scan the QR Code!



Saturday, September 28, 2024
0600-2000 Operational Period

(Charge Codes)


AIY-221

PN R8Z0 (1522) [P]

STATE MOBILIZATION WA-WFS-521

State and Federal cost share breakdown

AIR	Daily	Approval	GROUND	Daily	Approval
DNR	%		DNR	%	
MOB	%		MOB	%	
BLM	%		BLM	%	

Incident Objectives	1. Incident Name GOOSMUS FIRE	2. Date Prepared 9/27/2024	3. Time Prepared 1200
4. Operational Period (Date and Time) 9/28/2024 0600-2000			
5. General Control Objectives for the Incident (include Alternatives) <ul style="list-style-type: none"> • Provide for the safety of firefighters and the public through utilization of strategic and deliberate risk assessment processes. Ensure incident within an incident protocols are established and understood by all. • Develop strategic plans to prioritize and protect identified values at risk to the surrounding private residences and communities. • Engage in transparent communication with agency administrators and local fire department officials, to ensure critical information is shared during the decision-making process. • Enhance relationships throughout the area through communication and active involvement with the stakeholders, including; residents, public agencies, community leaders, cooperators, and landowners. • Maintain fiscal accountability of the incident while supporting the needs of the host agencies and the community. • Assist in initial attack and support as requested by the host agencies while maintaining communication and coordination. 			
6. Weather Forecast for Operational Period See attached weather forecast			
7. General Safety Message <ul style="list-style-type: none"> • Provide for firefighter and public safety at all times. • Monitor compliance of 10 and 18 by all incident personnel. • Adhere to 2:1 work/rest ratio for all fire line personnel. • Aviation safety is high priority. Assess the risk against the benefit of the mission. • Ensure all assigned personnel understand emergency medical reporting & transport procedures including locations of nearest emergency responders & facilities. 			
8. Attachments (check if attached)			
ICS-202	9. Prepared by (PSC) Dusty Patrick	10. Approved by (IC) 	

ORGANIZATION ASSIGNMENT LIST			
1. Incident Name		GOOSMUS FIRE	
2. Date Prepared		9/27/2024	3. Time 1200
4. Operational Period		9/28/2024	0600-2000
5. INCIDENT COMMANDER & STAFF			9. LOGISTICS SECTION
Incident Commander	Andrew Stenbeck (O-1.1)		Logs Chief
Safety Officer	Reed Heckly (O-23)		Mike Bucy (O-1.12)
Medical	Mary Andersen (O-16)		Logs Chief (t)
Information	Issabelle Hoygaard-Reeser (O-1.16)		Jennifer Thompson (O-1.13)
			Logs Chief (t)
			Auora Bernard (O-44)
			BCMG
			James Daeschler (O-1.18)
			BCMG (t)
			Aaron Culp (O-1.14)
			10. OPERATIONS SECTION
6. AGENCY REPRESENTATIVE			Field
			Aaron Coe (O-1.2)
Agency	Name		Planning
			Brian Hansen
BLM	Shevawn Sapp		a. Division A
BLM	Johnathan Meier		DIVS
WA DNR	Pat Ryan		Tom Hall
WA DNR	Brett Walker		DIVS(t)
WA DNR	Kyle Pomrankey		Austin Hatten (O-1.5)
State Fire Marshal	Aaron Robertson		b. Division H
Ferry County Sheriff	Amy Rooker		DIVS
Ferry Fire Chief Dist 13	John Porter		Brock Schuh (O-1.3)
Ferry Fire Chief Dist 14	John Foster		
DEM	Steve Bonner		c. Division W
			DIVS
			Daniel Montano (O-1.4)
			c. Division NIGHT
			DIVS
			Brock Henneman
7. PLANNING SECTION			
Planning Chief	Dusty Patrick (O-1.6)		
RESL	Jessica Walston (v) (O-1.7)		
SITL (t)	Eric Krausz (O-1.8)		
			11. FINANCE SECTION
GISS	Rose Beaton (v) (O-31)		FSC
GISS	Rueben Miller (v) (O-1.9)		Michelle Leonard (O-1.11)
			FSC
			Marcy Johnson (O-1.10)
			EQRT
			Sharleen Puckett (O-1.17)
8. COMMUNICATIONS			PTRC(t)
INCM	Jeff Smetzler (E-15.1)		
RADO	John Nelson (E-15.3)		
COMT	Robert Leaming (E-15.2)		
COMT	Kevin Judd (O-32)		
			12. CONTACTS / OTHER INFORMATION
			NEWICC (509) 685-6900
			Spokane Valley Comms: 509-389-2002
Prepared by:	Spot Weather: 541-276-4493		
	Dusty Patrick PSC3		

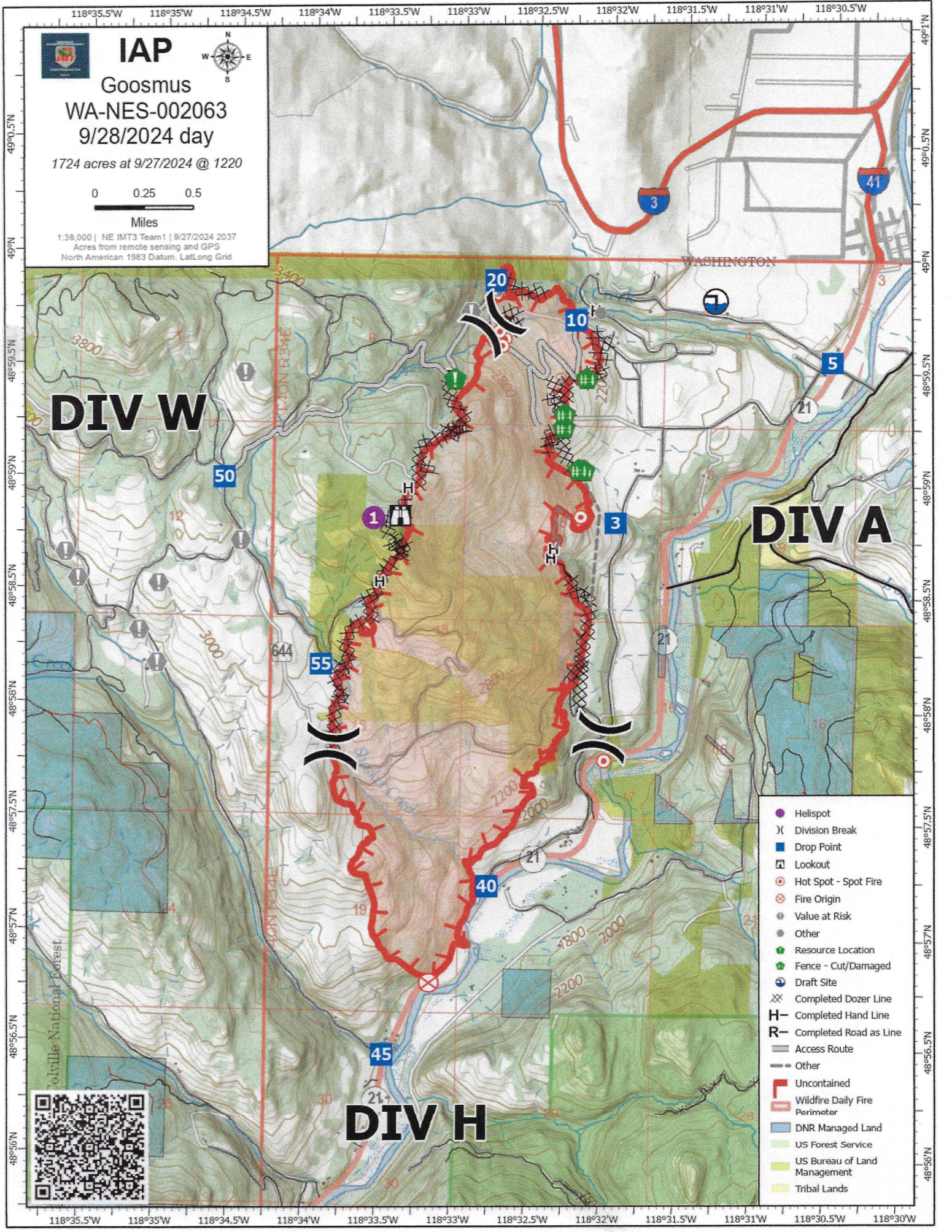
DIVISION ASSIGNMENT LIST			1. Branch		2. Division / Group			Page 1 of 2		A
3. Incident Name				4. Operational Period						
GOOSMUS FIRE				Date: 9/28/2024			Time: 0600-2000			
5. Operations Personnel										
Operations Chief		Aaron Coe (O-1.2)			Division/Group Supervisor			Tom Hall		
Safety Officer		Reed Heckly (O-23)						Austin Hatten (O-1.5)		
6. Resources Assigned this Period										
RO #	Strike Team/Task Force/Resource	Leader	# People	Contact (phone, radio freq, etc.)	EMT	LWD	Remarks			
C-1	CR2I - SES CHELAN 411	CR2I	13		1	10/11				
LOL	UNIT CREWS BC	CREWS								
LOL	UNIT CREWS BC	CREWS								
TBD	SMOD - DNR - WA-OLS - GATES	SMOD - Module, Suppression	10			10/11				
O-2	WAY, DAVID MCKINLEY	STEN	1			10/11				
O-3	STEMKOSKI, TANNER JOHN	STEN	1			10/10				
E-3	ENG5 - 2204 - WA-PCS	ENG5	3		1	10/10				
E-4	ENG5 - 2405 - WA-PCS	ENG5	4		1	10/10				
E-5	ENG5 - 5302 - WA-NWS - Chad Bowman	ENG5	4			10/10				
E-6	ENG5 - E8201 - WA-SPS - Myles Reed	ENG5	4		1	10/9				
E-7	ENG5 - ENGINE 1301 - WAOLS (WA-OLS-E5X-1301) - Morgan	ENG5	4		1	10/10				
TBD	Walla Walla STL	STL	1			10/11				
TBD	ENG4 Walla Walla	ENG4	2			10/11				
TBD	ENG4 Benton 4	ENG4	2			10/11				
TBD	ENG5 Walla Walla 4	ENG5	2			10/11				
TBD	ENG5 West Benton	ENG5	2			10/11				
TBD	WTS2 Walla Walla 8	WTS2	1			10/11				
			54							
7. Work Assignments										
<p>Continue to direct line where possible Structure protection and triage Minimize threat to values at risk</p>										
8. Special Instructions										
9. Communication Summary										
Function	Name	Mode	RX FREQ	N/W	RX TONE/NAC	TX FREQ	N/W	TX TONE/NAC		
PRIMARY COMMAND	CMD 2	A	154.5275	N	186.2	158.4	N	186.2		
NIGHT SHIFT COMMAND	REPUBLIC	A	159.36	N	118.8	151.235	N	118.8		
FERRY COUNTY DISPATCH	FY14REPT	A	153.845	N	91.5	158.805	N	103.5		
DIVISION A	SILVER	A	163.89	N	0	163.89	N	0		
STRUCTURE	TAC 8	A	151.7	N	186.2	151.7	N	186.2		
A/G FIXED	A/G 1	A	167.8375	N	0	167.8375	N	156.7		
A/G ROTOR	A/G 2	A	169.15	N	0	169.15	N	203.5		
AIRGUARD	AIRGUARD	A	168.625	N	0	168.625	N	110.9		
Prepared by RESL(t) Jessica Walston			Approved by (PSC) Dusty Patrick			Date: 9/27/2024		Time: 1430		

DIVISION ASSIGNMENT LIST			1. Branch		2. Division / Group			Page 2 of 2		A	
3. Incident Name				4. Operational Period							
GOOSMUS FIRE				Date: 9/27/2024		Time: 0600-2000					
5. Operations Personnel											
Operations Chief			Aaron Coe (O-1.2)			Division/Group Supervisor			Tom Hall		
Safety Officer			Reed Heckly (O-23)						Austin Hatten (O-1.5)		
6. Resources Assigned this Period											
RO #	Strike Team/Task Force/Resource	Leader	# People	Contact (phone, radio freq, etc.)	EMT	LWD	Remarks				
O-2101	SNO. 22 - ENGINE TYPE 3 (STL)	ENG3	1			10/11					
E-2102	SNO. 26 - ENGINE TYPE 3	ENG3	3			10/11					
E-2103	SNO. 22 - ENGINE TYPE 3	ENG3	2			10/11					
E-2104	SNO. 22 - ENGINE TYPE 6	ENG6	2			10/11					
E-2105	SNO. 16 - ENGINE 3	ENG3	3			10/11					
E-2107	WHATCOM 14 - TENDER 2	WTS2	1			10/10					
E-2108	North Snohomish RFA STL(t)	WTS2	1			10/10					
O-7	WALKER, JOHN C	FELB	1			10/12					
O-38	LYLE, BRYAN LEE	TFLD	1			10/12					
O-43	CAWLEY-MURPHREE, TIMOTHY J	DIVS	1			10/12					
O-10	BRANDON, CHRISTOPHER LEE	HEQB	1			10/11					
O-8	CORREIA, MICHAEL	HEQB	1			10/12					
E-2	DZR3 - PARADIGM INDUSTRIES LLC - A29862	DZR3	1			10/9					
E-17	SC RIVER LAND MANAGEMENT SOLUTIONS,	WTS2	1			10/10					
E-19	FERRY-OKANOGAN CO FIRE DIST 13 - RT3 - Don Skare	WTS3	1			10/9					
E-34	PECN 2 - MEDIC 29	AMB2	2			10/11					
			23								
7. Work Assignments											
<p>Continue to direct line where possible Structure protection and triage Minimize threat to values at risk</p>											
8. Special Instructions											
9. Communication Summary											
Function	Name	Mode	RX FREQ	N/W	RX TONE/NAC	TX FREQ	N/W	TX TONE/NAC			
PRIMARY COMMAND	CMD 2	A	154.5275	N	186.2	158.4	N	186.2			
NIGHT SHIFT COMMAND	REPUBLIC	A	159.36	N	118.8	151.235	N	118.8			
FERRY COUNTY DISPATCH	FY14REPT	A	153.845	N	91.5	158.805	N	103.5			
DIVISION A	SILVER	A	163.89	N	0	163.89	N	0			
STRUCTURE	TAC 8	A	151.7	N	186.2	151.7	N	186.2			
A/G FIXED	A/G 1	A	167.8375	N	0	167.8375	N	156.7			
A/G ROTOR	A/G 2	A	169.15	N	0	169.15	N	203.5			
AIRGUARD	AIRGUARD	A	168.625	N	0	168.625	N	110.9			
Prepared by RESL(t) Jessica Walston			Approved by (PSC) Dusty Patrick			Date: 9/27/2024		Time: 1430			

DIVISION ASSIGNMENT LIST			1. Branch		2. Division / Group			
3. Incident Name GOOSMUS FIRE			4. Operational Period Date: 9/27/2024 Time: 0600-2000					
5. Operations Personnel								
Operations Chief		Aaron Coe (O-1.2)		Division/Group Supervisor		Brock Schuh (O-1.3)		
Safety Officer		Reed Heckly (O-23)						
6. Resources Assigned this Period								
RO #	Strike Team/Task Force/Resource	Leader	# People	Contact (phone, radio freq, etc.)	EMT	LWD	Remarks	
C-8	CR21 - NW - NES - NORTH COLUMBIA - DNR	CR21	21					
O-18	SMOD - LACAMAS HAND CREW	SMOD	8			10/12		
O-19	SMOD - PEAK IA MODULE	SMOD - Module, Suppression	11			10/10		
O-33	SMOD - NEWAUKUM MODULE	SMOD - Module, Suppression	11			10/12		
O-39	SHAFTO, PHILIP DANIEL	TFLD	1			10/12		
E-42	ENG6 - METHOW RIVER WILD FIRE - 500915	ENG6	3			10/11		
E-43	ENG6 - METHOW RIVER WILD FIRE - 150300	ENG6	3			10/11		
E-16	ENG5 - AR 7401 - DNR	ENG5	4		2	10/11		
E-25	ENG6 - ALDER CREEK FIRE INC - B01948	ENG6 - Engine, Type 6	3			10/12		
E-37	FECN/OKCN 13 - BR R37	ENG6 - Engine, Type 6	2			10/11		
E-40	ENG6 - THE GENERAL CONTRACTOR, LLC - B96605	EN56 - Engine, Type 5 or 6	3			10/12		
O-6	FMOD - FALLER MODULE - NEWMAN BEN A - MOD 1 - FALL MO	FMOD	2			10/11		
E-45	WTS3 - CIAIS, ANDRE - 077186	WTS3	1			10/12		
			73					
7. Control Operations:								
<p>Continue to direct line where possible Structure protection and triage Minimize threat to values at risk</p>								
8. Special Instructions								
9. Communication Summary								
Function	Name	Mode	Frequency					
PRIMARY COMMAND	CMD 2	A	154.5275	N	186.2	158.4	N	186.2
NIGHT SHIFT COMMAND	REPUBLIC	A	159.36	N	118.8	151.235	N	118.8
FERRY COUNTY DISPATCH	FY14REPT	A	153.845	N	91.5	158.805	N	103.5
DIVISION H	TAC 6	A	151.76	N	186.2	151.76	N	186.2
STRUCTURE	TAC 8	A	151.7	N	186.2	151.7	N	186.2
A/G FIXED	A/G 1	A	167.8375	N	0	167.8375	N	156.7
A/G ROTOR	A/G 2	A	169.15	N	0	169.15	N	203.5
AIRGUARD	AIRGUARD	A	168.625	N	0	168.625	N	110.9
Prepared by RESL(t) Jessica Walston		Approved by (PSC) Dusty Patrick			Date: 9/27/2024		Time: 1430	

DIVISION ASSIGNMENT LIST			1. Branch		2. Division / Group Page 1 of 2				W
3. Incident Name GOOSMUS FIRE			4. Operational Period Date: 9/27/2024 Time: 0600-2000						
5. Operations Personnel									
Operations Chief		Aaron Coe (O-1.2)		Division/Group Supervisor		Daniel Montano (O-1.4)			
Safety Officer		Reed Heckly (O-23)							
6. Resources Assigned this Period									
RO #	Strike Team/Task Force/Resource	Leader	# People	Contact (phone, radio freq, etc.)	EMT	LWD	Remarks		
C-4	CR21 - SRV #12	CR21 - Crew, Type 2 IA	19			10/12			
C-5	CR21 - PatRick Environmental, Inc. NCC	CR21 - Crew, Type 2 IA	20			10/12			
C-6	CR21 - DIAMOND FIRE NCC 11B	CR21	20			10/12			
C-9	CR21 - NW - NES - HIGHLANDS - DNR	CR21	21						
TBD	Thurston 3 STL	STL	1			10/11			
TBD	ENG6 Thurston 3	ENG 6	2			10/11			
TBD	ENG5 Hoquaim	ENG5	2			10/11			
TBD	ENG6 Montensano	ENG6	3			10/11			
TBD	ENG6 Kittitas 1	ENG6	2			10/11			
TBD	WTS2 Snohomish 22	WTS2	1			10/11			
O-40	SCHAFFFRAN, ANDREW WARREN	TFLD	1			10/12			
E-23	ENG6 - BLACKSTONE FORESTRY LLC - B76286	ENG6 - Engine, Type 6	3			10/10			
E-24	ENG6 - WILD FIRE SERVICES, INC - D10873	ENG6 - Engine, Type 6	3			10/10			
E-26	ENG6 - ALDER CREEK FIRE INC - E02096	ENG6 - Engine, Type 6	3			10/12			
E-22	ENG6 - BAILEY ENTERPRISES, L.L.C. -	ENG6 - Engine, Type 6	3			10/10			
LOL	ENG 7109	ENG							
			104						
7. Control Operations:									
<p>Continue to direct line where possible Structure protection and triage Minimize threat to values at risk</p>									
8. Special Instructions									
<p>AMB1 will be staged at DP 50, EMT will be staged at DP 55</p>									
9. Communication Summary									
Function	Name	Mode	Frequency						
PRIMARY COMMAND	CMD 2	A	154.5275	N	186.2	158.4	N	186.2	
NIGHT SHIFT COMMAND	REPUBLIC	A	159.36	N	118.8	151.235	N	118.8	
FERRY COUNTY DISPATCH	FY14REPT	A	153.845	N	91.5	158.805	N	103.5	
DIVISION W	TAC 7	A	151.625	N	186.2	151.625	N	186.2	
STRUCTURE	TAC 8	A	151.7	N	186.2	151.7	N	186.2	
A/G FIXED	A/G 1	A	167.8375	N	0	167.8375	N	156.7	
A/G ROTOR	A/G 2	A	169.15	N	0	169.15	N	203.5	
AIRGUARD	AIRGUARD	A	168.625	N	0	168.625	N	110.9	
Prepared by RESL(t) Jessica Walston		Approved by (PSC) Dusty Patrick			Date: 9/27/2024		Time: 1430		

DIVISION ASSIGNMENT LIST			1. Branch		2. Division / Group Page 2 of 2				W
3. Incident Name GOOSMUS FIRE			4. Operational Period Date: 9/27/2024 Time: 0600-2000						
5. Operations Personnel									
Operations Chief		Aaron Coe (O-1.2)		Division/Group Supervisor		Daniel Montano (O-1.4)			
Safety Officer		Reed Heckly (O-23)							
6. Resources Assigned this Period									
RO #	Strike Team/Task Force/Resource	Leader	# People	Contact (phone, radio freq, etc.)	EMT	LWD	Remarks		
O-5	FMOD - FALLER MODULE - NEWMAN BEN A - MOD 2 -	FMOD	2			10/11			
O-9	BRUNER, TIMOTHY RUSSELL	HEQB - Heavy Equipment Boss, Single	1			10/11			
E-41	LOST CREEK LOGGING	SKG2	2						
E-1	TOP GRADE EXCAVATION - 93-102575	DZR2	1			10/9			
E-8	DZR4 - STOTTS CONSTRUCTION, INC	DZR4	1			10/10			
E-20	NORTHWEST TREE SERVICE - 93-105796	WTS2	1			10/11			
E-21	MICA PEAK INDUSTRIES - 93-105797	WTS2	1			10/11			
E-28	AMB2 - CURLEW MED-1	AMB2 - Ambulance, Type 2	2			10/10			
O-20	SPENDLOVE, BRIAN DAVID	EMTF - Emergency Medical Technician,	1			10/12			
			12						
7. Control Operations:									
<p>Continue to direct line where possible Structure protection and triage Minimize threat to values at risk</p>									
8. Special Instructions									
<p>AMB1 will be staged at DP 50, EMT will be staged at DP 55</p>									
9. Communication Summary									
Function	Name	Mode	Frequency						
PRIMARY COMMAND	CMD 2	A	154.5275	N	186.2	158.4	N	186.2	
NIGHT SHIFT COMMAND	REPUBLIC	A	159.36	N	118.8	151.235	N	118.8	
FERRY COUNTY DISPATCH	FY14REPT	A	153.845	N	91.5	158.805	N	103.5	
DIVISION W	TAC 7	A	151.625	N	186.2	151.625	N	186.2	
STRUCTURE	TAC 8	A	151.7	N	186.2	151.7	N	186.2	
A/G FIXED	A/G 1	A	167.8375	N	0	167.8375	N	156.7	
A/G ROTOR	A/G 2	A	169.15	N	0	169.15	N	203.5	
AIRGUARD	AIRGUARD	A	168.625	N	0	168.625	N	110.9	
Prepared by RESL(t) Jessica Walston			Approved by (PSC) Dusty Patrick			Date: 9/27/2024		Time: 1430	



IAP
 Goosmus
 WA-NES-002063
 9/28/2024 day
 1724 acres at 9/27/2024 @ 1220

0 0.25 0.5
 Miles

1:38,000 | NE IMT3 Team1 | 9/27/2024 2037
 Acres from remote sensing and GPS
 North American 1983 Datum. Lat/Long Grid

DIV W

DIV A

DIV H

- Hellsport
- X Division Break
- Drop Point
- 🏠 Lookout
- 🔥 Hot Spot - Spot Fire
- ⊗ Fire Origin
- ⊙ Value at Risk
- ⊙ Other
- 📍 Resource Location
- 🌿 Fence - Cut/Damaged
- 🏠 Draft Site
- ⊗ Completed Dozer Line
- H- Completed Hand Line
- R- Completed Road as Line
- Access Route
- Other
- 🔥 Uncontained
- 🔥 Wildfire Daily Fire Perimeter
- 🌲 DNR Managed Land
- 🌲 US Forest Service
- 🌲 US Bureau of Land Management
- 🌲 Tribal Lands



WEATHER	1. Incident Name GOOSMUS FIRE	2. Date Prepared 9/27/2024	3. Time Prepared 1200
----------------	---	--------------------------------------	---------------------------------

*Forecast is based on forecast start time of 1130 PDT on September 27.
If conditions become unrepresentative...contact the National Weather Service.*

.DISCUSSION...

Mostly clear skies with diurnally driven winds tonight into Saturday. A cold will sweep across the Goosmus Fire Sunday morning. Winds will switch westerly overnight Saturday and will become gusty with frontal passage on Sunday. Cold front will be dry with only a small chance of 10-20 percent for showers possible. Sunday afternoon will be dry and breezy.

.SATURDAY...

Sky/weather.....Partly sunny. Increasing cirrus clouds in the afternoon.

CWR.....0 percent.

LAL.....1.

Max temperature.....Around 76.

Min humidity.....29 percent.

Wind (20 ft).....Downslope winds up to 3 mph in the morning switching upslope or east 3 to 6 mph after 0900 PDT.

Mixing height.....Inversion lifting after 1300 PDT with a mixing height of 4000 ft agl between 1600 and 1800 PDT.

Transport winds.....East around 3 mph in the morning shifting to the south around 6 mph in the afternoon.

Haines Index.....4 Low.

.SATURDAY NIGHT...

Sky/weather.....Mostly cloudy.

CWR.....0 percent.

LAL.....1.

Min temperature.....Around 46.


Max humidity.....65 percent.

Wind (20 ft).....Southeast winds 2 to 4 mph in the evening becoming downslope after 1900 PDT. Winds increasing and becoming west 4 to 7 mph after 2200 PDT Saturday evening.

Mixing height.....1500 ft AGL.

Transport winds.....West 6 to 8 mph.

Haines Index.....4 Low.

INCIDENT RADIO COMMUNICATIONS PLAN I-205		1. INCIDENT NAME		2. DATE/TIME PREPARED		3. OPERATIONAL PERIOD DATE/TIME					
		GOOSMUS		9/27/2024 1630		9/28/24 0600-2000					
4. BASIC RADIO CHANNEL UTILIZATION											
Ch #	Function	Channel Name	Assignment	RX Freq	N/W	RX Tone/NAC	TX Freq	N/W	TX Tone/NAC	Mode Analog (A) Digital (D) Mixed (M)	Remarks
1	COMMAND	CMD 1	CMD	151.5125	N	186.2	158.4075	N	186.2	A	
2	COMMAND	CMD 2	CMD	154.5275	N	186.2	158.4000	N	186.2	A	PRIMARY COMMAND
3	COMMAND	REPUBLIC	CMD	159.3600	N	118.8	151.2350	N	118.8	A	NIGHT SHIFT COMMAND
4	COMMAND	FY14REPT	CMD	153.8450	N	91.5	158.8050	N	103.5	A	FERRY COUNTY DISPATCH
5	TAC	SILVER	TAC	163.8900	N	0.0	163.8900	N	0.0	A	DIVISION A
6	TAC	TAC 6	TAC	151.7600	N	186.2	151.7600	N	186.2	A	DIVISION H
7	TAC	TAC 7	TAC	151.6250	N	186.2	151.6250	N	186.2	A	DIVISION W
8	TAC	TAC 8	TAC	151.7000	N	186.2	151.7000	N	186.2	A	STRUCTURE
9	TAC	TAC 9	TAC	151.5050	N	186.2	151.5050	N	186.2	A	
10	TAC	REDNET	TAC	153.8300	N	0.0	153.8300	N	156.7	A	REDNET
11	TAC	VTAC 11	TAC	151.1375	N	0.0	151.1375	N	156.7	A	
12	TAC	VTAC 12	TAC	154.4525	N	0.0	154.4525	N	156.7	A	
13	TAC	OSSCR	TAC	156.1350	N	0.0	156.1350	N	203.5	A	MEDEVAC
14	A/G	A/G 1	A/G	167.8375	N	0.0	167.8375	N	156.7	A	A/G FIXED
15	A/G	A/G 2	A/G	169.1500	N	0.0	169.1500	N	203.5	A	A/G ROTOR
16	AIRGUARD	AIRGUARD	A/G	168.6250	N	0.0	168.6250	N	110.9	A	AIRGUARD
5. Special Instructions:								CMD 1@ ICP AND CMD 2 ARE LINKED, VIA UHF. BATTERIES AVAILABLE AT COMMS TRAILER IN FIRE CAMP AT FAIRGROUNDS			
6. I-205 Prepared By: Communications Unit Leader								Name: JEFFREY SMETZLER		Signature: 	

Incident: GOOSMUS	Date: Saturday, 09/28/2024	Shift: DAY
-----------------------------	--------------------------------------	----------------------



SAFETY MESSAGE

SAFETY IS OUR FIRST PRIORITY



Fire fighter safety comes first on every fire, every time

<u>LCES</u>	<u>FIRE FIGHTERS CODE OF CONDUCT</u>	<u>IRPG</u>	<u>WORK-REST GUIDELINES</u>
-------------	--------------------------------------	-------------	-----------------------------

USE THE INCIDENT RESPONSE POCKET GUIDE DAILY

Assess The Situation

Identify Hazards

Determine Hazard Controls

CHAIN SAW OPERATIONS-FELLING

- Only employees who are trained and certified will operate chain saws under any conditions or participate in felling operations.
- When you enter a felling area, *always* make sure your presence is known to the felling crews.
- No employee shall approach a felling operation closer than 2 tree lengths of the tree being felled until the faller has acknowledged that it is safe to do so. Faller need to have control of work area.
- On steep hills never work below where trees are being felled (because of the potential for rolling rocks and trees).
- Watch out for other trees and/or tops that may fall in an undetermined direction when hit by a falling tree.
- Do not work in the presence of lodged trees or broken limbs that are hanging freely in trees.
- Never climb or walk under a lodged tree.

****YOU ARE RESPONSIBLE FOR YOUR OWN SAFETY****

-If you practice safety, your co-workers will appreciate it and your personal welfare can be protected-

Remember that it is your life that is on the line. You have the right to voice your opinion and concerns about personal safety. Don't hesitate to speak up if you feel uncomfortable with the situation or the circumstance in which you are. Firefighting is inherently hazardous. Discuss your concerns with your immediate supervisor or with a Safety Officer. We are in this together!

<i>Line Safety Officers</i>	<i>Safety Officer</i>
	Reed Heckly

MEDICAL PLAN (ICS 206 WF)

Controlled Unclassified Information//Basic

1. Incident/Project Name		2. Operational Period					
Incident 2063 GOOSMUS FIRE		Date/Time Sept 28, 2024					
3. Ambulance Services							
Name	Complete Address	Phone & EMS Frequency		Advanced Life Support (ALS) Yes No			
Ferry County District 14 Fire	24 Catherine Creek RD, Curlew WA 99118	911 / FY14REPT		<input type="checkbox"/>	<input checked="" type="checkbox"/>		
Ferry County EMS District 1	499 W 9th St, Republic WA 99156	911		<input type="checkbox"/>	<input checked="" type="checkbox"/>		
4. Air Ambulance Services							
Name	Phone	Type of Aircraft & Capability					
Life Flight Network	800-232-0911	Helicopter, ALS					
Air Lift Northwest	888-835-1599	Helicopter, ALS					
5. Hospitals							
Name Complete Address	GPS Datum – WGS 84 Coordinate Standard Degrees Decimal Minutes DD° MM.MMM' N - Lat DD° MM.MMM' W - Long	Travel Time Air Gnd		Phone	Helipad Yes No	Level of Care Facility	
Providence Mount Carmel Hospital	Lat: 48°32.449000'N	20 min	70 min	509-685-5100	<input checked="" type="checkbox"/>	<input type="checkbox"/>	Level 4
	Long: 117°53.492167'W						
	VHF:						
Ferry County Memorial Hospital	Lat: 48°39.157'N	10 min	40 min	509-775-3333	<input checked="" type="checkbox"/>	<input type="checkbox"/>	Level 4
	Long: 118°44.062'W						
	VHF:						
Providence Sacred Heart Medical Center	Lat: 47°38.947667'N	45 min	180 min	509-474-3131	<input checked="" type="checkbox"/>	<input type="checkbox"/>	Level 2
	Long: 117°24.784667'W						
	VHF:						
Harborview Medical Center	Lat: 47°36.168833'N	90 min	330 min	206-223-3177	<input checked="" type="checkbox"/>	<input type="checkbox"/>	Level 1
	Long: 122°19.481000'W						
	VHF:						
6. Division Branch Group		Area Location Capability					
Alpha		EMS Responders & Capability:		AMBO 2			
		Equipment Available on Scene:					
		Medical Emergency Channel:		Goosmus Communications			
		ETA for Ambulance to Scene:					
		Air:		50 min			
		Ground:		20 min			
		Approved Helispot:					
		Lat:					
Long:							
Hotel		EMS Responders & Capability:		Multiple within modules			
		Equipment Available on Scene:					
		Medical Emergency Channel:		Goosmus Communications			
		ETA for Ambulance to Scene:					
		Air:		50 min			
		Ground:		15 min			
		Approved Helispot:					
		Lat:					
Long:							

MEDICAL PLAN (ICS 206 WF)

Controlled Unclassified Information//Basic

7. Name & Location	Remote Camp Location(s)		
Whisky	Point of Contact:		
	EMS Responders & Capability:	AMBO 1, ALS 21 Spendlove	
	Equipment Available on Scene:		
	Medical Emergency Channel:	Goosmus Communications	
	ETA for Ambulance to Scene:		
	Air:	50 min	
	Ground:	20 min	
	Approved Helispot:		
	Lat:		
	Long:		
	Point of Contact:		
	EMS Responders & Capability:		
	Equipment Available on Scene:		
	Medical Emergency Channel:		
	ETA for Ambulance to Scene:		
	Air:		
	Ground:		
	Approved Helispot:		
	Lat:		
	Long:		
8. Prepared By (Medical Unit Leader)	9. Date/Time	10. Reviewed By (Safety Officer)	11. Date/Time
Mary Andersen	09/27/2024	Jared Reber	09/27/2024

Notes: Run all medicals through command:

For Night shift on 09/26/24 utilize NEWICC on Command Channel

For Day shift on 09/27/24 utilize GOOSMUS on Command Channel

Helispot: Identify Medical Extraction Points, Drop Points, Staging Areas within Divisions

Ground Ambulance: Med 1 from Curlew with two EMT's based out of Curlew



LEGEND

- Porta-johns
- Hand washing
- Hydrant
- Thru-Traffic Flow

Goosmus Fire LOGISTICS INFORMATION

ICP 0600-2200

FOOD Breakfast: 0530-0800
Dinner: 1800-2100
Food times may change. If you are going to be late returning to camp, please call the Logistics Chief phone or communications via radio.

SHOWERS Shower times will be 0500 to 1100; 1500-2300

- Please see the map for parking and other camp information. It can change daily.
- Please pay attention to the “Entrance/Exit” signage on our maps. This is to help facilitate the morning and evening rush.
- Tenders: Please fill up at the hydrants along Fairgrounds Road during non-rush hour times. Track your gallonage on your shift tickets please.
 - The 4th of July Creek Road fill site is active. It can be a tight turn but supplies about 1,000gpm. It is just west of the Danville Post Office and marked with blue ribbon. You do not need to keep track of these fills.
- On GMs please include contact name and phone number
 - Be detailed on what you want
 - Write very clearly
 - Go through your Div Sup and Ops
- *Please keep vehicle speeds down through fire camp and adjacent roads.*
- Lunches, water, and sports drinks will be available in the reefer.
- Ice will be available on in the reefer as well. (afternoon on the 27th).
- We will have a camp MEDL set up—They are operating at the ICP and have a med supply for bumps, cuts, and blisters (and other things). There is also a “sick area” set as well. If you are sick, please phone Mary Andersen at 509-680-2846. Do not come into the ICP feeling ill.

PIO Corner

Cindy Preston

We are in direct line of the fire north of the border. Amazing work by everyone on both sides of the border & the bravery of all on the ground and in the air has been incredible to witness to say the least. Thank you to each and every one who has been tackling this fire! We appreciate you more than you'll ever know.

Robert Rhéaume

Cindy Preston So very scary with as fast as it was traveling due to the winds. Great work from both sides of the border. Let's hope it fizzles out soon.

Helga Baker

Praying for all firefighters, service men/woman

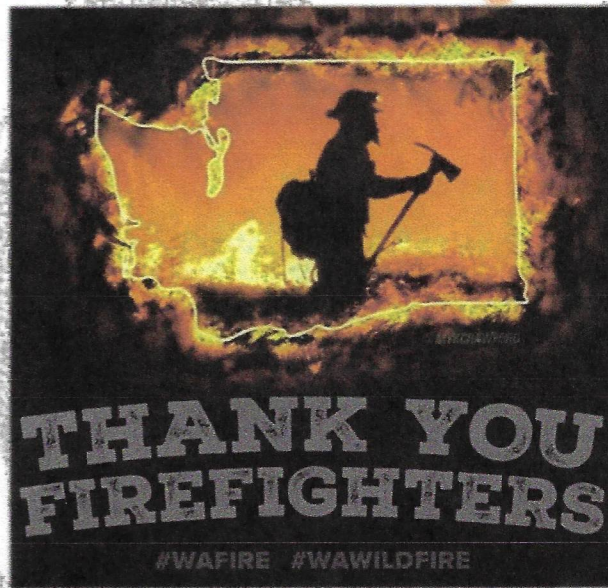
Chris Livers

Please, everyone be safe. thank you firefighters and anyone helping

From Our Community to You

Kelly Nasmyth
Huge thankyou!!!!

Maureen Haworth
Thank you and be safe!



Alvin Denison

PLEASE STAY SAFE 🙏



Thank You for What You Do!

Nicole Lee

Cindy Preston Thank you to all the firefighters out there fighting the fires!!

We Love All Crew and Fire Photos! Help us tell your story to the public
Text them to: 509-808-6720 or email to WildGoatFire@gmail.com

We would love to share with the community how hard you are working.

Let us know if questions arise and direct them to:
509-808-6720

Lisa Cameron

Thank you to all the firefighters from Grand Forks BC 🙏❤️

MEDICAL PLAN (ICS 206 WF)

Controlled Unclassified Information//Basic

Medical Incident Report

FOR A NON-EMERGENCY INCIDENT, WORK THROUGH CHAIN OF COMMAND TO REPORT AND TRANSPORT INJURED PERSONNEL AS NECESSARY.

FOR A MEDICAL EMERGENCY: IDENTIFY ON-SCENE INCIDENT COMMANDER BY NAME AND POSITION AND ANNOUNCE "MEDICAL EMERGENCY" TO INITIATE RESPONSE FROM IMT COMMUNICATIONS/DISPATCH.

Use the following items to communicate situation to communications/dispatch.

1. CONTACT COMMUNICATIONS / DISPATCH (Verify correct frequency prior to starting report)

Ex: "Communications, Div. Alpha. Stand-by for Emergency Traffic."

2. INCIDENT STATUS: Provide incident summary (including number of patients) and command structure.

Ex: "Communications, I have a Red priority patient, unconscious, struck by a falling tree. Requesting air ambulance to Forest Road 1 at (Lat./Long.) This will be the Trout Meadow Medical, IC is TFLD Jones. EMT Smith is providing medical care."

Severity of Emergency / Transport Priority	<input type="checkbox"/> RED / PRIORITY 1 Life or limb threatening injury or illness. Evacuation need is IMMEDIATE <i>Ex: Unconscious, difficulty breathing, bleeding severely, 2° – 3° burns more than 4 palm sizes, heat stroke, disoriented.</i> <input type="checkbox"/> YELLOW / PRIORITY 2 Serious Injury or illness. Evacuation may be DELAYED if necessary. <i>Ex: Significant trauma, unable to walk, 2° – 3° burns not more than 1-3 palm sizes.</i> <input type="checkbox"/> GREEN / PRIORITY 3 Minor Injury or illness. Non-Emergency transport <i>Ex: Sprains, strains, minor heat-related illness.</i>	
Nature of Injury or Illness & Mechanism of Injury		Brief Summary of Injury or Illness <i>(Ex: Unconscious, Struck by Falling Tree)</i>
Evacuation Request		Air Ambulance / Short Haul/Hoist Ground Ambulance / Other
Patient Location		Descriptive Location & Lat. / Long. (WGS84)
Incident Name		Geographic Name + Medical <i>(Ex: Trout Meadow Medical)</i>
On-Scene Incident Commander		Name of on-scene IC of Incident within an Incident <i>(Ex: TFLD Jones)</i>
Patient Care		Name of Care Provider <i>(Ex: EMT Smith)</i>

3. INITIAL PATIENT ASSESSMENT: Complete this section for each patient as applicable (start with the most severe patient)

Patient Assessment: See IRPG PAGE 106

Treatment:

4. EVACUATION PLAN:

Evacuation Location (if different): (Descriptive Location (drop point, intersection, etc.) or Lat. / Long.) Patient's ETA to Evacuation Location:

Helispot / Extraction Site Size and Hazards:

5. ADDITIONAL RESOURCES / EQUIPMENT NEEDS:

Example: Paramedic/EMT, crews, immobilization devices, AED, oxygen, trauma bag, IV/fluid(s), splints, rope rescue, wheeled litter, HAZMAT, extrication

6. COMMUNICATIONS: Identify State Air/Ground EMS Frequencies and Hospital Contacts as applicable

Function	Channel Name/Number	Receive (RX)	Tone/NAC *	Transmit (TX)	Tone/NAC *
COMMAND					
AIR-TO-GRND					
TACTICAL					

7. CONTINGENCY: Considerations: If primary options fail, what actions can be implemented in conjunction with primary evacuation method? Be thinking ahead..

8. ADDITIONAL INFORMATION: Updates/Changes, etc.

REMEMBER: Confirm ETAs of resources ordered. Act according to your level of training. Be Alert. Keep Calm. Think Clearly. Act Decisively.