

DAY

INCIDENT ACTION PLAN

GOOSMUS FIRE

WA-NES-002063



For maps, evaluations, and IAPs Scan the QR Code!



Sunday, September 29, 2024  
0600-2000 Operational Period

(Charge Codes)


AIY-221

PN R8Z0 (1522) [P]

STATE MOBILIZATION WA-WFS-521

State and Federal cost share breakdown

AIR	Daily	Approval	GROUND	Daily	Approval
DNR	%		DNR	%	
MOB	%		MOB	%	
BLM	%		BLM	%	

<b>Incident Objectives</b>	1. Incident Name <b>GOOSMUS FIRE</b>	2. Date Prepared <b>9/28/2024</b>	3. Time Prepared <b>1200</b>
4. Operational Period (Date and Time) <b>9/29/2024 0600-2000</b>			
5. General Control Objectives for the Incident (include Alternatives)  <ul style="list-style-type: none"> <li>• Provide for the safety of firefighters and the public through utilization of strategic and deliberate risk assessment processes. Ensure incident within an incident protocols are established and understood by all.</li> <li>• Develop strategic plans to prioritize and protect identified values at risk to the surrounding private residences and communities.</li> <li>• Engage in transparent communication with agency administrators and local fire department officials, to ensure critical information is shared during the decision-making process.</li> <li>• Enhance relationships throughout the area through communication and active involvement with the stakeholders, including; residents, public agencies, community leaders, cooperators, and landowners.</li> <li>• Maintain fiscal accountability of the incident while supporting the needs of the host agencies and the community.</li> <li>• Assist in initial attack and support as requested by the host agencies while maintaining communication and coordination.</li> </ul>			
6. Weather Forecast for Operational Period  <b>See attached weather forecast</b>			
7. General Safety Message  <ul style="list-style-type: none"> <li>• Provide for firefighter and public safety at all times.</li> <li>• Monitor compliance of 10 and 18 by all incident personnel.</li> <li>• Adhere to 2:1 work/rest ratio for all fire line personnel.</li> <li>• Aviation safety is high priority. Assess the risk against the benefit of the mission.</li> <li>• Ensure all assigned personnel understand emergency medical reporting &amp; transport procedures including locations of nearest emergency responders &amp; facilities.</li> </ul>			
8. Attachments (check if attached)			
ICS-202	9. Prepared by (PSC) <b>Dusty Patrick</b>	10. Approved by (IC) 	

<b>ORGANIZATION ASSIGNMENT LIST</b>					
1. Incident Name		<b>GOOSMUS FIRE</b>		<b>9. LOGISTICS SECTION</b>	
2. Date Prepared	9/28/2024	3. Time	1200	Logs Chief	Mike Bucy (O-1.12)
4. Operational Period	9/29/2024		0600-2000	Logs Chief (t)	Jennifer Thompson (O-1.13)
<b>5. INCIDENT COMMANDER &amp; STAFF</b>				Logs Chief (t)	Auora Bernard (O-44)
Incident Commander	Andrew Stenbeck (O-1.1)			BCMG	James Daeschler (O-1.18)
Safety Officer	Reed Heckly (O-23)			BCMG (t)	Aaron Culp (O-1.14)
Medical	Mary Andersen (O-16)				
Information	Isabelle Hoygaard-Reeser (O-1.16)				
Information (t)	Jessa Lewis (O-45)			<b>10. OPERATIONS SECTION</b>	
				Field	Aaron Coe (O-1.2)
<b>6. AGENCY REPRESENTATIVE</b>				Planning	Brian Hansen
<b>Agency</b>	<b>Name</b>			<b>a. Division A</b>	
BLM	Shevawn Sapp			DIVS	Tom Hall (O-42)
BLM	Johnathan Meier			DIVS(t)	Austin Hatten (O-1.5)
WA DNR	Pat Ryan			<b>b. Division H</b>	
WA DNR	Brett Walker			DIVS	Brock Schuh (O-1.3)
WA DNR	Kyle Pomrankey				
State Fire Marshals Office	Aaron Robertson			<b>c. Division W</b>	
Ferry County Sheriff	Ray Maycumber			DIVS	Daniel Montano (O-1.4)
Ferry Fire Chief Dist 13	Eric Hewitt				
Ferry Fire Chief Dist 14	John Porter			<b>c. Division NIGHT</b>	
DEM	Steve Bonner			DIVS	Jim Wheeler
<b>7. PLANNING SECTION</b>				<b>11. FINANCE SECTION</b>	
Planning Chief	Dusty Patrick (O-1.6)			FSC	Michelle Leonard (O-1.11)
RESL	Jessica Walston (v) (O-1.7)			FSC	Marcy Johnson (O-1.10)
SITL (t)	Eric Krausz (O-1.8)			EQRT	Sharleen Puckett (O-1.17)
GISS	Rose Beaton (v) (O-31)			PTRC(t)	Walt Seidel (O-13)
<b>8. COMMUNICATIONS</b>					
INCM	Jeff Smetzler (E-15.1)			<b>12. CONTACTS / OTHER INFORMATION</b>	
RADO	John Nelson (E-15.3)			NEWICC (509) 685-6900	
COMT	Robert Leaming (E-15.2)			Spokane Valley Comms: 509-389-2002	
COMT	Kevin Judd (O-32)			Spot Weather: 541-276-4493	
Prepared by:					
Dusty Patrick PSC3					

DIVISION ASSIGNMENT LIST			1. Branch		2. Division / Group				
					Page 1 of 2				
3. Incident Name			4. Operational Period						
GOOSMUS FIRE			Date: 9/29/2024			Time: 0600-2000			
5. Operations Personnel									
Operations Chief		Aaron Coe (O-1.2)		Division/Group Supervisor		Tom Hall (O-42)			
Safety Officer		Reed Heckly (O-23)				Austin Hatten (O-1.5)			
6. Resources Assigned this Period									
RO #	Strike Team/Task Force/Resource	Leader	# People	Contact (phone, radio freq, etc.)	EMT	LWD	Remarks		
C-1	CR21 - SES CHELAN 411	Joseph Stuart	13		1	10/11			
LOL	UNIT CREWS BC								
LOL	UNIT CREWS BC								
O-2	STEB	David Way	1			10/11			
O-3	STEN(t)	Tanner Sternkoski	1			10/10			
E-3	ENG5 - 2204 - WA-PCS	Nathan Jurgensen	3		1	10/10			
E-4	ENG5 - 2405 - WA-PCS	Travis Pakenen	4		1	10/10			
E-5	ENG5 - 5302 - WA-NWS	Chad Bowman	4			10/10			
E-6	ENG5 - E8201 - WA-SPS	Myles Reed	4		1	10/9			
E-7	ENG5 - ENGINE 1301 - WAOLS (WA-OLS-E5X-1301)	Morgan Reisdorfer	4		1	10/10			
O-2116	STL - WALLA WALLA	Shawn Ongers	1	509-386-3900		10/12			
E-2117	ENG4 - WALLA WALLA	Derick Schoessler	2			10/12			
E-2118	ENG4 - BENTON 4	Manuel Estrella	2	509-619-4086		10/12			
E-2119	ENG5 - WALLA WALLA 4	Ryan Chase	2			10/11			
E-2120	ENG5 - WEST BENTON	William Petersen	2			10/11			
E-2122	WTS2 - WALLA WALLA 8	Tlm Daves	1			10/11			
			44						
7. Work Assignments									
<p>Continue to direct line where possible            Structure protection and triage            Minimize threat to values at risk</p>									
8. Special Instructions									
AMBO 2 staged at DP 5 (Post Office)									
9. Communication Summary									
Function	Name	Mode	RX FREQ	N/W	RX TONE/NAC	TX FREQ	N/W	TX TONE/NAC	
PRIMARY COMMAND	CMD 2	A	154.5275	N	186.2	158.4	N	186.2	
NIGHT SHIFT COMMAND	REPUBLIC	A	159.36	N	118.8	151.235	N	118.8	
FERRY COUNTY DISPATCH	FY14REPT	A	153.845	N	91.5	158.805	N	103.5	
DIVISION A	SILVER	A	163.89	N	0	163.89	N	0	
STRUCTURE	TAC 8	A	151.7	N	186.2	151.7	N	186.2	
A/G FIXED	A/G 1	A	167.8375	N	0	167.8375	N	156.7	
A/G ROTOR	A/G 2	A	169.15	N	0	169.15	N	203.5	
AIRGUARD	AIRGUARD	A	168.625	N	0	168.625	N	110.9	
Prepared by RESL(t) Jessica Walston			Approved by (PSC) Dusty Patrick			Date: 9/28/2024		Time: 1430	

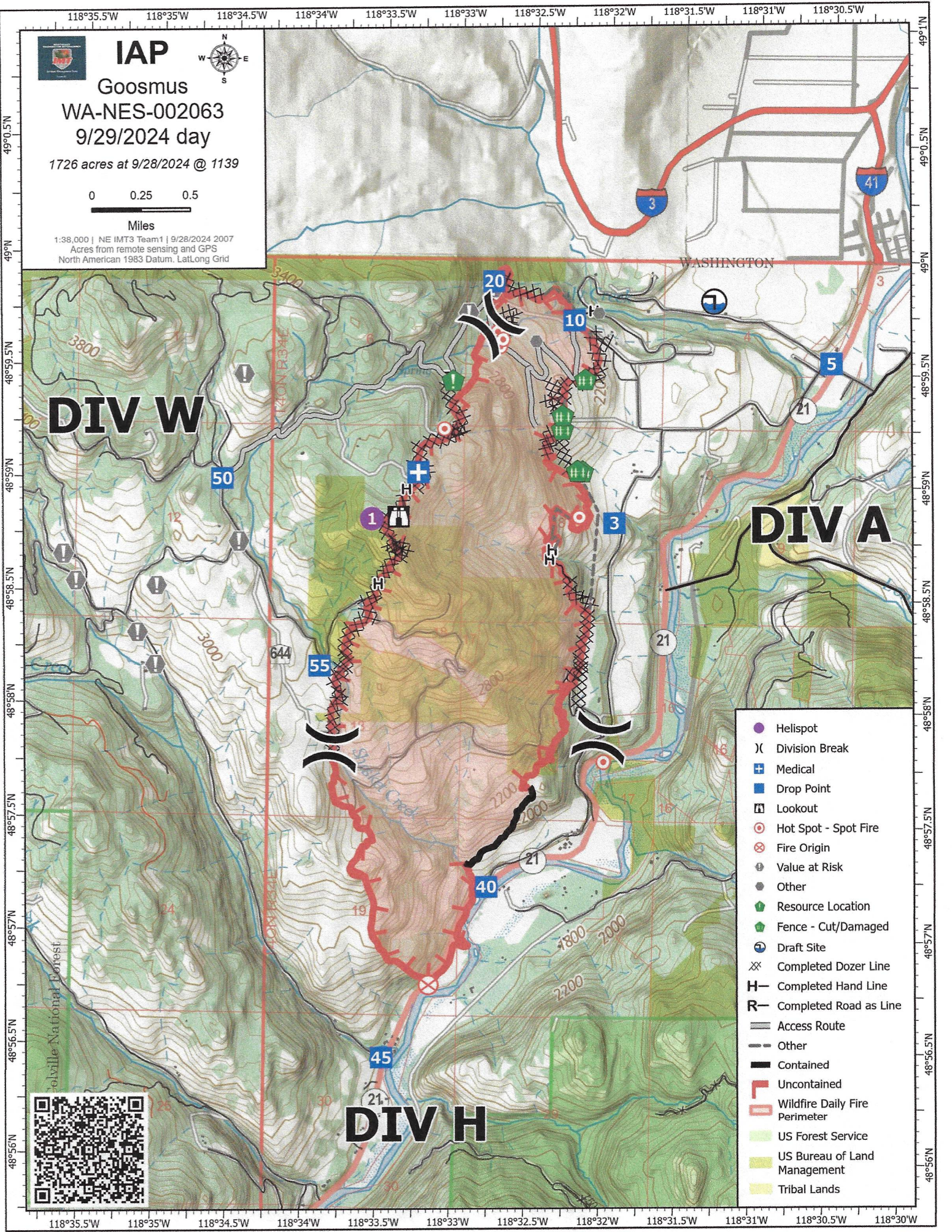
DIVISION ASSIGNMENT LIST			1. Branch		2. Division / Group		Page 2 of 2		A		
3. Incident Name <b>GOOSMUS FIRE</b>				4. Operational Period Date: <b>9/29/2024</b>				Time: <b>0600-2000</b>			
5. Operations Personnel											
Operations Chief			Aaron Coe (O-1.2)			Division/Group Supervisor			Tom Hall (O-42)		
Safety Officer			Reed Heckly (O-23)						Austin Hatten (O-1.5)		
6. Resources Assigned this Period											
RO #	Strike Team/Task Force/Resource	Leader	# People	Contact (phone, radio freq, etc.)	EMT	LWD	Remarks				
O-2101	STL - SNO. 22	Travis Hots	1			10/11					
O-2108	STL(t) - NORTH SNOHOMISH RFA	Keith Johnson	1			10/10					
E-2102	ENG3 - SNO. 26	Shane Roeder	3			10/11					
E-2103	ENG3 - SNO. 22	Jim Bansbach	2			10/11					
E-2104	ENGS6 - NO. 22	Robert White	2			10/11					
E-2105	ENG3 - SNO. 16	Scott Anderson	3			10/11					
E-2107	WTS2 - WHATCOM 14	Cameron Clark	1			10/10					
O-43	DIVS	Timothy Cawley-Murphee	1			10/12					
O-38	TFLD	Bryan Lyle	1			10/12					
E-52	SKG4 - DARRELL GREEN - 031057		2			10/13					
O-10	HEQB	Chris Brandon	1			10/11					
O-8	HEQB	Michael Correia	1			10/12					
E-2	DZR3 - PARADIGM INDUSTRIES LLC - A29862	JT Mcelhose	1			10/9					
E-17	WTS2 - SC RIVER LAND MANAGEMENT SOLUTIONS, LLC - 93-102370	TIM SCRIVER	1			10/10					
E-34	AMBO 2 - PECN 2	Beth Osgood	2	509-710-0472		10/11					
			23								
7. Work Assignments											
<p><b>Continue to direct line where possible</b>  <b>Structure protection and triage</b>  <b>Minimize threat to values at risk</b></p>											
8. Special Instructions											
AMBO 2 staged at DP 5 (Post Office)											
9. Communication Summary											
Function	Name	Mode	RX FREQ	N/W	RX TONE/NAC	TX FREQ	N/W	TX TONE/NAC			
PRIMARY COMMAND	CMD 2	A	154.5275	N	186.2	158.4	N	186.2			
NIGHT SHIFT COMMAND	REPUBLIC	A	159.36	N	118.8	151.235	N	118.8			
FERRY COUNTY DISPATCH	FY14REPT	A	153.845	N	91.5	158.805	N	103.5			
DIVISION A	SILVER	A	163.89	N	0	163.89	N	0			
STRUCTURE	TAC 8	A	151.7	N	186.2	151.7	N	186.2			
A/G FIXED	A/G 1	A	167.8375	N	0	167.8375	N	156.7			
A/G ROTOR	A/G 2	A	169.15	N	0	169.15	N	203.5			
AIRGUARD	AIRGUARD	A	168.625	N	0	168.625	N	110.9			
Prepared by RESL(t) Jessica Walston			Approved by (PSC) Dusty Patrick			Date: 9/28/2024		Time: 1430			

DIVISION ASSIGNMENT LIST				1. Branch		2. Division / Group			H
3. Incident Name				4. Operational Period					
GOOSMUS FIRE				Date: 9/29/2024		Time: 0600-2000			
5. Operations Personnel									
Operations Chief		Aaron Coe (O-1.2)			Division/Group Supervisor		Brock Schuh (O-1.3)		
Safety Officer		Reed Heckly (O-23)							
6. Resources Assigned this Period									
RO #	Strike Team/Task Force/Resource	Leader	# People	Contact (phone, radio freq, etc.)	EMT	LWD	Remarks		
C-8	CR2I - NW - NES - NORTH COLUMBIA - DNR	Dylan Chester	21			10/10			
O-18	SMOD - LACAMAS HAND CREW	Jayne Morgan	8			10/12			
O-19	SMOD - PEAK IA MODULE	Cole Phelan	11			10/11			
O-33	SMOD - NEWAUKUM MODULE	Joshua White	11			10/12			
O-6	FMOD - NEWMAN BEN A	Ben Newman	2			10/11			
O-7	FELB	John Walker	1			10/12			
O-39	TFLD	Philip Shafto	1			10/12			
E-25	ENG6 - ALDER CREEK FIRE INC - B01948	Steve Ward	3			10/12			
E-40	ENG6 - THE GENERAL CONTRACTOR, LLC - B96605	Tom Adams	3			10/12			
E-42	ENG6 - METHOW RIVER WILD FIRE - 500915	Andy Dalton	3			10/12			
E-43	ENG6 - METHOW RIVER WILD FIRE - 150300	Leonardo Sanche	3			10/11			
E-45	WTS3 - CIAIS, ANDRE - 077186	Jeffery Echols	1			10/12			
E-16	ENG5 - AR 7401 - DNR	James Spencer	4		2	10/11			
			72						
7. Control Operations:									
<p><b>Continue to direct line where possible</b>  <b>Structure protection and triage</b>  <b>Minimize threat to values at risk</b></p>									
8. Special Instructions									
9. Communication Summary									
Function	Name	Mode	Frequency						
PRIMARY COMMAND	CMD 2	A	154.5275	N	186.2	158.4	N	186.2	
NIGHT SHIFT COMMAND	REPUBLIC	A	159.36	N	118.8	151.235	N	118.8	
FERRY COUNTY DISPATCH	FY14REPT	A	153.845	N	91.5	158.805	N	103.5	
DIVISION H	TAC 6	A	151.76	N	186.2	151.76	N	186.2	
STRUCTURE	TAC 8	A	151.7	N	186.2	151.7	N	186.2	
A/G FIXED	A/G 1	A	167.8375	N	0	167.8375	N	156.7	
A/G ROTOR	A/G 2	A	169.15	N	0	169.15	N	203.5	

DIVISION ASSIGNMENT LIST			1. Branch		2. Division / Group Page 1 of 2				W
3. Incident Name <b>GOOSMUS FIRE</b>			4. Operational Period Date: <b>9/29/2024</b> Time: <b>0600-2000</b>						
5. Operations Personnel									
Operations Chief		Aaron Coe (O-1.2)		Division/Group Supervisor		Daniel Montano (O-1.4)			
Safety Officer		Reed Heckly (O-23)							
6. Resources Assigned this Period									
RO #	Strike Team/Task Force/Resource	Leader	# People	Contact (phone, radio freq, etc.)	EMT	LWD	Remarks		
C-4	CR2I - SRV #12	Julian Jacobo	21			10/12			
C-5	CR2I - PatRick Environmental, Inc. NCC	Garth Chambers	20			10/12			
C-6	CR2I - DIAMOND FIRE NCC 11B	Larry Eckelman	20	530-515-9139		10/12			
C-9	CR2I - NW - NES - HIGHLANDS - DNR	Seth Schertenleib	21			10/11			
O-40	TFLD	Andrew Schaffran	1			10/12			
E-22	ENG6 - BAILEY ENTERPRISES, L.L.C. -	Greg Bailey	3			10/11			
E-23	ENG6 - BLACKSTONE FORESTRY LLC - B76286	Chad Sheets	3			10/11			
E-24	ENG6 - WILD FIRE SERVICES, INC - D10873	Mike Foster	3			10/11			
E-26	ENG6 - ALDER CREEK FIRE INC - E02096	Vitas Labanausk	3			10/12			
LOL	ENG 7109	Wyatt Breeze	3						
LOL	ENG 97111		3						
O-2109	STL THURSTON 3	Wes Long	1	509-637-5559		10/11			
E-2110	ENG6 - THURSTON 3	Scott Santhuff	2			10/12			
E-2111	ENG5 - HOQUAIM	John Phillips	2			10/12			
E-2112	ENG6 - MONTENSANO	Spencer Coleman	3			10/12			
E-2113	ENG6 - KITTITAS 1	Curtis Taylor	2			10/12			
E-2114	ENG6 - SNOHOMISH 22		3			10/12			
E-2115	WTS2 - W. THURSTON	Colby Lyon	1			10/12			
			115						
7. Control Operations:									
<p>Continue to direct line where possible            Structure protection and triage            Minimize threat to values at risk</p>									
8. Special Instructions									
<p>AMB1 will be staged at DP 50, ALS 21 will be staged at DP 55</p>									
9. Communication Summary									
Function	Name	Mode	Frequency						
PRIMARY COMMAND	CMD 2	A	154.5275	N	186.2	158.4	N	186.2	
NIGHT SHIFT COMMAND	REPUBLIC	A	159.36	N	118.8	151.235	N	118.8	
FERRY COUNTY DISPATCH	FY14REPT	A	153.845	N	91.5	158.805	N	103.5	
DIVISION W	TAC 7	A	151.625	N	186.2	151.625	N	186.2	
STRUCTURE	TAC 8	A	151.7	N	186.2	151.7	N	186.2	
A/G FIXED	A/G 1	A	167.8375	N	0	167.8375	N	156.7	

DIVISION ASSIGNMENT LIST			1. Branch		2. Division / Group Page 2 of 2				<b>W</b>
3. Incident Name <b>GOOSMUS FIRE</b>			4. Operational Period Date: <b>9/29/2024</b> Time: <b>0600-2000</b>						
<b>5. Operations Personnel</b>									
Operations Chief		<i>Aaron Coe (O-1.2)</i>		Division/Group Supervisor		<i>Daniel Montano (O-1.4)</i>			
Safety Officer		<i>Reed Heckly (O-23)</i>							
<b>6. Resources Assigned this Period</b>									
RO #	Strike Team/Task Force/Resource	Leader	# People	Contact (phone, radio freq, etc.)	EMT	LWD	Remarks		
O-9	HEQB	Timothy Bruner	1			10/11			
E-1	DZR2 - TOP GRADE EXCAVATION - 93-102575	Mike Friend	1			10/10			
E-8	DZR4 - STOTTS CONSTRUCTION, INC	Miles Anderson	1			10/10			
E-20	WTS2 - NORTHWEST TREE SERVICE -	Corey Jones	1			10/11			
E-21	WTS2 - MICA PEAK INDUSTRIES - 93-105797	Logan Morgan	1			10/11			
O-5	FMOD - FALLER MODULE - NEWMAN BEN A - MOD 2 -	Ethan Newman	2			10/11			
E-38	SKG3 - DARRELL GREEN - 553667		2			10/12			
E-41	SKG2 - LOST CREEK LOGGING	Mike Aubert	2			10/12			
E-28	AMB1 - CURLEW MED-1	Teresa Jenkins	3	425-829-2534		10/10			
O-20	EMPF - ALS - 21	Brian Spendlove	1	720-835-3145		10/12			
			15						
<b>7. Control Operations:</b>									
<p><b>Continue to direct line where possible</b>  <b>Structure protection and triage</b>  <b>Minimize threat to values at risk</b></p>									
<b>8. Special Instructions</b>									
<p><b>AMB1 will be staged at DP 50, ALS 21 will be staged at DP 55</b></p>									
<b>9. Communication Summary</b>									
Function	Name	Mode	Frequency						
PRIMARY COMMAND	CMD 2	A	154.5275	N	186.2	158.4	N	186.2	
NIGHT SHIFT COMMAND	REPUBLIC	A	159.36	N	118.8	151.235	N	118.8	
FERRY COUNTY DISPATCH	FY14REPT	A	153.845	N	91.5	158.805	N	103.5	
DIVISION W	TAC 7	A	151.625	N	186.2	151.625	N	186.2	
STRUCTURE	TAC 8	A	151.7	N	186.2	151.7	N	186.2	
A/G FIXED	A/G 1	A	167.8375	N	0	167.8375	N	156.7	
A/G ROTOR	A/G 2	A	169.15	N	0	169.15	N	203.5	
AIRGUARD	AIRGUARD	A	168.625	N	0	168.625	N	110.9	
Prepared by RESL(t) Jessica Walston		Approved by (PSC) Dusty Patrick			Date: 9/28/2024		Time: 1430		





# IAP

Goosmus

WA-NES-002063

9/29/2024 day

1726 acres at 9/28/2024 @ 1139

0 0.25 0.5

Miles

1:38,000 | NE IMT3 Team1 | 9/28/2024 2007  
 Acres from remote sensing and GPS  
 North American 1983 Datum, LatLong Grid



## DIV W

## DIV A

## DIV H

- Helispot
- X Division Break
- + Medical
- Drop Point
- ⌂ Lookout
- Hot Spot - Spot Fire
- ⊗ Fire Origin
- ⊙ Value at Risk
- Other
- Resource Location
- Fence - Cut/Damaged
- ⊙ Draft Site
- ⊗ Completed Dozer Line
- H Completed Hand Line
- R Completed Road as Line
- Access Route
- Other
- Contained
- Uncontained
- Wildfire Daily Fire Perimeter
- US Forest Service
- US Bureau of Land Management
- Tribal Lands



<b>WEATHER</b>	1. Incident Name	2. Date Prepared	3. Time Prepared
	GOOSMUS FIRE	9/28/2024	1200

.DISCUSSION...

A dry cold front will move over the fire around 0100-0400 hours Sunday. Despite cooler high temperatures Sunday, relative humidity will in the low at the fire with breezy northwest winds picking up in the late morning and lasting through much of the day. Monday remains dry and cool but with much lighter winds.

.SUNDAY...

Sky/weather.....Partly cloudy. 10% chance of sprinkles in the afternoon.

CWR.....0 percent.

LAL.....1.

Max temperature.....63.

Min humidity.....22 percent.

Wind (20 ft).....West winds 3 to 6 mph becoming northwest 10 to 15 mph around 1100 hours. Gusts up to 25 mph in the afternoon.

Mixing height.....5000 ft AGL.

Transport winds.....West 13 to 22 mph.

Haines Index.....4 Low.

.SUNDAY NIGHT...

Sky/weather.....Mostly clear. Frost possible overnight.

CWR.....0 percent.

LAL.....1.

Min temperature.....Around 32.

Max humidity.....85 percent.

Wind (20 ft).....Northwest winds 5 to 10 mph becoming west 3 to 5 mph after 0200. Gusts up to 20 mph in the evening.

Mixing height.....Near surface.

Transport winds.....Northwest 9 to 16 mph.

Haines Index.....4 Low.

.MONDAY...

Sky/weather.....Sunny. Frost possible in the morning.

CWR.....0 percent.

LAL.....1.

Max temperature.....Around 62.

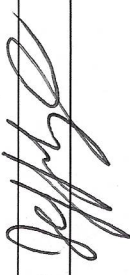
Min humidity.....24 percent.

Wind (20 ft).....Southeast winds 2 to 4 mph.

Mixing height.....3500 ft AGL.

Transport winds.....Northwest 8 to 10 mph.

Haines Index.....3 Very Low.

INCIDENT RADIO COMMUNICATIONS PLAN I-205			1. INCIDENT NAME		2. DATE/TIME PREPARED			3. OPERATIONAL PERIOD DATE/TIME			
			<b>GOOSMUS</b>		9/28/2024 1300			9/29/24 0600-2000			
4. BASIC RADIO CHANNEL UTILIZATION											
Ch #	Function	Channel Name	Assignment	RX Freq	NW	RX Tone/NAC	TX Freq	NW	TX Tone/NAC	Mode Analog (A) Digital (D) Mixed (M)	Remarks
1	COMMAND	CMD 1	CMD	151.5125	N	186.2	158.4075	N	186.2	A	
2	COMMAND	CMD 2	CMD	154.5275	N	186.2	158.4000	N	186.2	A	PRIMARY COMMAND
3	COMMAND	REPUBLIC	CMD	159.3600	N	118.8	151.2350	N	118.8	A	NIGHT SHIFT COMMAND
4	COMMAND	FY14REPT	CMD	153.8450	N	91.5	158.8050	N	103.5	A	FERRY COUNTY DISPATCH
5	TAC	SILVER	TAC	163.8900	N	0.0	163.8900	N	0.0	A	DIVISION A
6	TAC	TAC 6	TAC	151.7600	N	186.2	151.7600	N	186.2	A	DIVISION H
7	TAC	TAC 7	TAC	151.6250	N	186.2	151.6250	N	186.2	A	DIVISION W
8	TAC	TAC 8	TAC	151.7000	N	186.2	151.7000	N	186.2	A	STRUCTURE
9	TAC	TAC 9	TAC	151.5050	N	186.2	151.5050	N	186.2	A	
10	TAC	REDNET	TAC	153.8300	N	0.0	153.8300	N	156.7	A	REDNET
11	TAC	VTAC 11	TAC	151.1375	N	0.0	151.1375	N	156.7	A	
12	TAC	VTAC 12	TAC	154.4525	N	0.0	154.4525	N	156.7	A	
13	TAC	OSSCR	TAC	156.1350	N	0.0	156.1350	N	203.5	A	MEDEVAC
14	A/G	A/G 1	A/G	167.8375	N	0.0	167.8375	N	156.7	A	A/G FIXED
15	A/G	A/G 2	A/G	169.1500	N	0.0	169.1500	N	203.5	A	A/G ROTOR
16	AIRGUARD	AIRGUARD	A/G	168.6250	N	0.0	168.6250	N	110.9	A	AIRGUARD
5. Special Instructions: CMD 1@ ICP AND CMD 2 ARE LINKED, VIA UHF. BATTERIES AVAILABLE AT COMMS TRAILER IN FIRE CAMP AT FAIRGROUNDS											
6. I-205 Prepared By: Communications Unit Leader						Name: JEFFREY SMETZLER			Signature: 		

Incident: **Goosmus**

Date: **Sunday, 9/29/24**

Operational Period: **Day Shift**

## **SAFETY MESSAGE**

### **SAFETY IS OUR TOP PRIORITY**

*Firefighter safety comes first on every fire, every time.*

### **MAKE SURE LCES IS IN PLACE**

Each firefighter must know the interconnection of LCES - lookouts, communications, escape routes, and safety zones. LCES should be established before engaging the fire: Select lookouts if needed and post in strategic locations, establish communications with coworkers and adjoining forces, determine escape routes and make them known, and select safety zones adequate for the fire behavior.

### **MAJOR HAZARDS AND RISKS**

- |   |   |
|---|---|
| <ul style="list-style-type: none"><li>• Snags and burned out trees —heads up!</li><li>• Steep slopes, rolling material—watch footing</li><li>• Dry flashy fuels aligned with slope</li><li>• PM weather conditions accelerate fire behavior</li></ul> | <ul style="list-style-type: none"><li>• Driving: One-way roads, dust, looky-loos</li><li>• Civilian traffic in the fire area</li><li>• Deer on highway dawn and dusk</li><li>• End-of-day fatigue while driving</li></ul> |
|---|---|

### **TODAY'S SAFETY EMPHASIS**

#### **WEATHER**

A dry cold front will sweep through the region Sunday delivering strong, consistent winds and very dry conditions. Winds will increase Sunday morning and remain strong through the afternoon.

- Winds associated with the cold front have the potential to create hazardous snag conditions. Use extra caution when working around fire-weakened trees and snags.
- When winds hit, consider the necessity of working in your area in light of the potential hazards. Get into a safer work area or come off the line if necessary.
- Monitor and record weather conditions hourly to track trends of wind, temps, and humidity.
- Monitor smoke patterns and fire behavior in all levels of fuels. Plan ahead for worsening conditions.
- If rain showers occur, watch for slippery walking and driving conditions.
  - Go slow and use extra caution.
  - Pace yourselves when working and/or walking in steep terrain. Watch out for each other.
  - Keep dry. Be alert for hypothermia.
  - Wet conditions will also make roads slick. Go slow. Keep headlights on. Clean windshields.



### **GENERAL WATCHOUTS IN PLAY (Do you see other watchouts also?)**

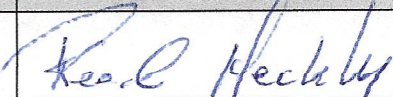
- #9. Building line downhill without safe anchor point.
- #11. Unburned fuel between you and the fire.
- #15. Wind increases and/or changes direction
- #16. Getting frequent spot fires across the line

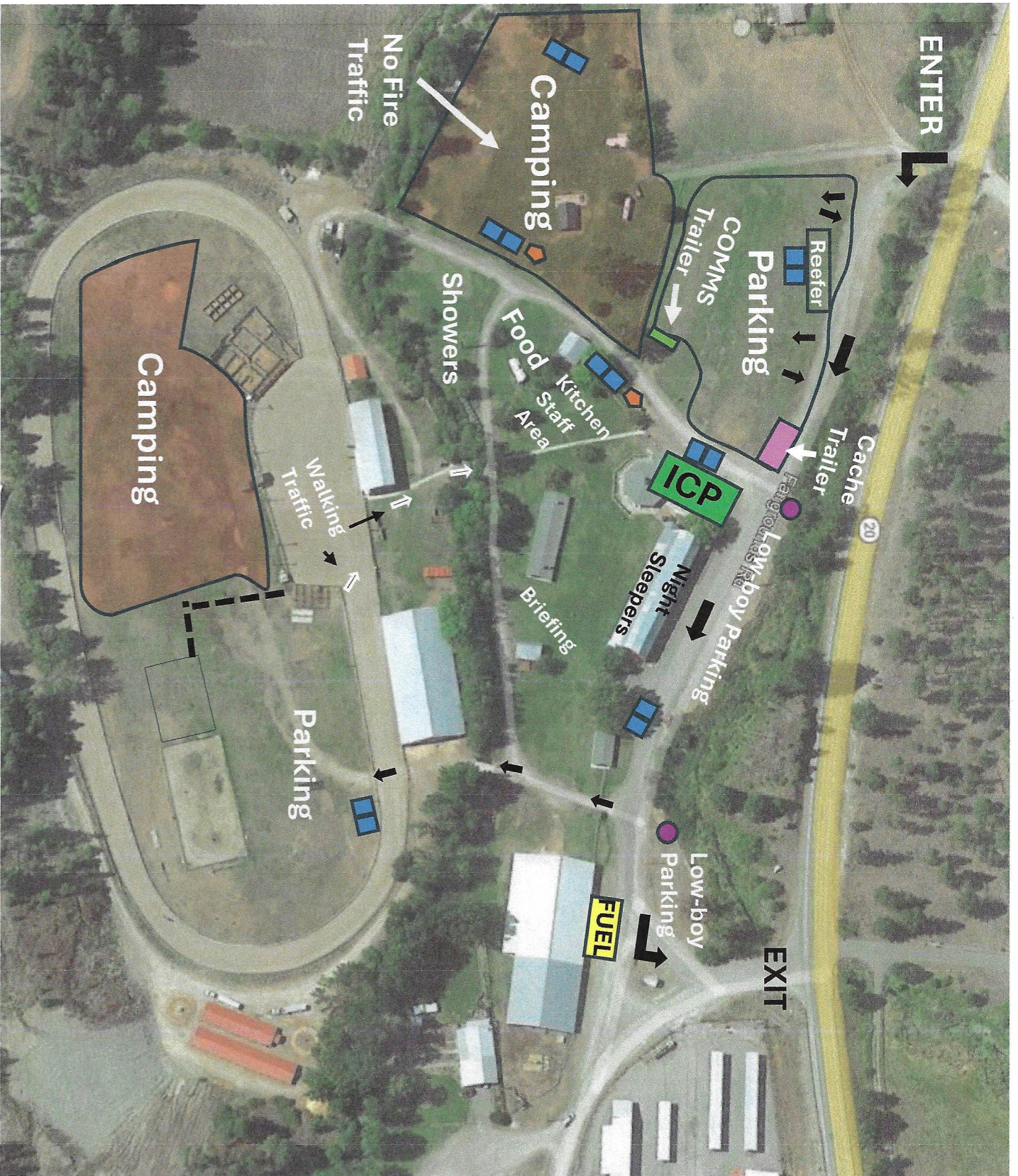
Safety Officer: **Reed Heckly**

Line Safety Officer: **YOU!**

# MEDICAL PLAN (ICS 206 WF)

Controlled Unclassified Information//Basic

<b>1. Incident/Project Name</b>				<b>2. Operational Period</b>				
WA-NES-002063 Goosmus Fire				September 29, 2024				
<b>3. Ambulance Services</b>								
Name	Complete Address	Phone & EMS Frequency		Advanced Life Support (ALS)				
				Yes	No			
Ferry County Dist. 14 Fire	24 Catherine Creek Rd Curlew, WA 99118	911/FY14 REPT		<input type="checkbox"/>	<input checked="" type="checkbox"/>			
Ferry County EMS Dist 1	499 W 9th St Republic WA 99156	911		<input type="checkbox"/>	<input checked="" type="checkbox"/>			
<b>4. Air Ambulance Services</b>								
Name	Phone	Type of Aircraft & Capability						
Life Flight Network	800-232-0911	Helicopter, ALS						
Air Lift Northwest	888-835-1599	Helicopter, ALS						
Spokane County Sheriff – Rescue 3	509-532-8900	Huey with Hoist, ALS						
<b>5. Hospitals</b>								
Name Complete Address	GPS Datum – WGS 84 Coordinate Standard Degrees Decimal Minutes DD° MM.MMM' N - Lat DD° MM.MMM' W - Long	Travel Time Air    Gnd		Phone	Helipad Yes    No		Level of Care Facility	
Providence Mt Carmel Hospital	Lat:		20 Min	70 Min	509-685-5100	<input checked="" type="checkbox"/>	<input type="checkbox"/>	Level 4
	Long:							
	VHF:							
Ferry County Memorial Hospital	Lat:		10 Min	40 Min	509-775-3333	<input checked="" type="checkbox"/>	<input type="checkbox"/>	Level 4
	Long:							
	VHF:							
Providence Sacred Heart Medical Center	Lat:		45 Min	180 Min	509-474-3131	<input checked="" type="checkbox"/>	<input type="checkbox"/>	Level 2
	Long:							
	VHF:							
Harborview Medical Center	Lat:		90 Min	330 Min	206-223-3177	<input checked="" type="checkbox"/>	<input type="checkbox"/>	Level 1
	Long:							
	VHF:							
<b>6. Division   Branch   Group</b>		<b>Area Location Capability</b>						
A	<b>EMS Responders &amp; Capability:</b>		AMBO 2					
	<b>Equipment Available on Scene:</b>							
	<b>Medical Emergency Channel:</b>		Goosmus Communications					
	<b>ETA for Ambulance to Scene:</b>		Air: 50 Min    Ground: 20 Min					
H	<b>EMS Responders &amp; Capability:</b>		Multiple within Modules					
	<b>Equipment Available on Scene:</b>							
	<b>Medical Emergency Channel:</b>		Goosmus Communications					
	<b>ETA for Ambulance to Scene:</b>		Air: 50 min    Ground: 20 min					
W	<b>EMS Responders &amp; Capability:</b>		AMBO 1, ALS 21 Spendlove					
	<b>Equipment Available on Scene:</b>							
	<b>Medical Emergency Channel:</b>		Goosmus Communications					
	<b>ETA for Ambulance to Scene:</b>		Air: 50 Min    Ground: 20 Min					
<b>8. Prepared By (Medical Unit Leader)</b>			<b>9. Date/Time</b>		<b>10. Reviewed By (Safety Officer)</b>		<b>11. Date/Time</b>	
Mary Andersen			9/28/2024				9/28/2024	



**LEGEND**

- Porta-johns (Blue rectangle)
- Hand washing (Orange pentagon)
- Hydrant (Purple circle)
- Thru-Traffic Flow (Black arrow)

## Goosmus Fire LOGISTICS INFORMATION

ICP 0600-2200

FOOD Breakfast: 0500-0800  
Dinner: 1800-2100  
Food times may change. If you are going to be late returning to camp, please call the Logistics Chief phone or communications via radio.

SHOWERS Shower times will be 0500 to 1100; 1500-2300

- Fuel truck available at the east end of the camp near the triangle. ***Any fuel dispensed will be a deduction from your final invoice.***
- Please see the map for parking and other camp information. It can change daily.
- Please pay attention to the “Entrance/Exit” signage on our maps. This is to help facilitate the morning and evening rush.
- Tenders: Please fill up at the hydrants along Fairgrounds Road during non-rush hour times. Track your gallonage on your shift tickets please.
  - The 4<sup>th</sup> of July Creek Road fill site is active. It can be a tight turn but supplies about 1,000gpm. It is just west of the Danville Post Office and marked with blue ribbon. You do not need to keep track of these fills.
- On GMs please include contact name and phone number
  - Be detailed on what you want
  - Write very clearly
  - Go through your Div Sup and Ops
- *Please keep vehicle speeds down through fire camp and adjacent roads.*
- Lunches, water, and sports drinks will be available in the reefer.
- Ice is available on in the reefer as well.
- We will have a camp MEDL set up—They are operating at the ICP and have a med supply for bumps, cuts, and blisters (and other things). There is also a “sick area” set as well. If you are sick, please phone Mary Andersen at 509-680-2846. Do not come into the ICP feeling ill.

# PIO Corner

Cindy Preston  
We are in direct line of the fire north of the border. Amazing work by everyone on both sides of the border & the bravery of all on the ground and in the air has been incredible to witness to say the least. Thank you to each and every one who has been tackling this fire! We appreciate you more than you'll ever know.

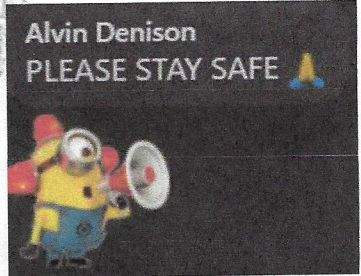
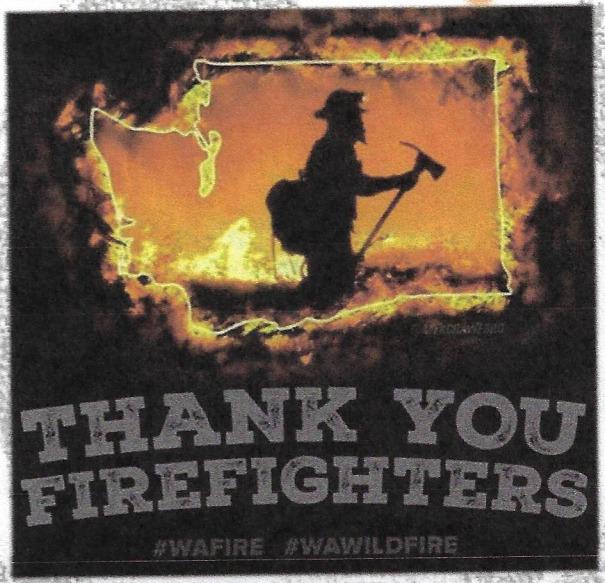
Robert Rhéaume  
Cindy Preston So very scary with as fast as it was traveling due to the winds. Great work from both sides of the border. Let's hope it fizzles out soon.

Helga Baker  
🙏 Praying for all firefighters, service men/woman

Chris Livers  
Please, everyone be safe. thank you firefighters and anyone helping.

## From Our Community to You

Kelly Nasmyth  
Huge thank you!!!!



Maureen Haworth  
Thank you and be safe!

## Thank You for What You Do!

Nicole Lee  
Cindy Preston Thank you to all the firefighters out there fighting the fires!!

**We Love All Crew and Fire Photos!** Help us tell your story to the public  
Text them to: 509-808-6720 or email to [WildGoatFire@gmail.com](mailto:WildGoatFire@gmail.com)

We would love to share with the community how hard you are working.

Let us know if questions arise and direct them to:  
509-808-6720

Lisa Cameron  
Thank you to all the firefighters from Grand Forks BC 🙏❤️



<b>FINANCE MESSAGE</b>	1. Incident Name <b>Goosmus</b>	2. Date Prepared <b>9/28/2024</b>	3. Time Prepared <b>17:10</b>
------------------------	------------------------------------	--------------------------------------	----------------------------------

**Please remember to keep your time up to date and CTRs turned in for a smooth demobe!**

**Please submit your original Shift Tickets and/or CTRs directly to us at morning briefing or ICP.**

**Have a safe and wonderful shift!**





# MEDICAL PLAN (ICS 206 WF)

Controlled Unclassified Information//Basic

## Medical Incident Report

**FOR A NON-EMERGENCY INCIDENT, WORK THROUGH CHAIN OF COMMAND TO REPORT AND TRANSPORT INJURED PERSONNEL AS NECESSARY.**

**FOR A MEDICAL EMERGENCY: IDENTIFY ON-SCENE INCIDENT COMMANDER BY NAME AND POSITION AND ANNOUNCE "MEDICAL EMERGENCY" TO INITIATE RESPONSE FROM IMT COMMUNICATIONS/DISPATCH.**

**Use the following items to communicate situation to communications/dispatch.**

**1. CONTACT COMMUNICATIONS / DISPATCH** (Verify correct frequency prior to starting report)

*Ex: "Communications, Div. Alpha. Stand-by for Emergency Traffic."*

**2. INCIDENT STATUS:** Provide incident summary (including number of patients) and command structure.

*Ex: "Communications, I have a Red priority patient, unconscious, struck by a falling tree. Requesting air ambulance to Forest Road 1 at (Lat./Long.) This will be the Trout Meadow Medical, IC is TFLD Jones. EMT Smith is providing medical care."*

Severity of Emergency / Transport Priority	<input type="checkbox"/> <b>RED / PRIORITY 1 Life or limb threatening injury or illness. Evacuation need is IMMEDIATE</b> <i>Ex: Unconscious, difficulty breathing, bleeding severely, 2° - 3° burns more than 4 palm sizes, heat stroke, disoriented.</i> <input type="checkbox"/> <b>YELLOW / PRIORITY 2 Serious Injury or illness. Evacuation may be DELAYED if necessary.</b> <i>Ex: Significant trauma, unable to walk, 2° - 3° burns not more than 1-3 palm sizes.</i> <input type="checkbox"/> <b>GREEN / PRIORITY 3 Minor Injury or illness. Non-Emergency transport</b> <i>Ex: Sprains, strains, minor heat-related illness.</i>	
Nature of Injury or Illness & Mechanism of Injury		<i>Brief Summary of Injury or Illness (Ex: Unconscious, Struck by Falling Tree)</i>
Evacuation Request		<i>Air Ambulance / Short Haul/Hoist Ground Ambulance / Other</i>
Patient Location		<i>Descriptive Location &amp; Lat. / Long. (WGS84)</i>
Incident Name		<i>Geographic Name + Medical (Ex: Trout Meadow Medical)</i>
On-Scene Incident Commander		<i>Name of on-scene IC of Incident within an Incident (Ex: TFLD Jones)</i>
Patient Care		<i>Name of Care Provider (Ex: EMT Smith)</i>

**3. INITIAL PATIENT ASSESSMENT:** Complete this section for each patient as applicable (start with the most severe patient)

Patient Assessment: See IRPG PAGE 106

Treatment:

**4. EVACUATION PLAN:**

Evacuation Location (if different): (Descriptive Location (drop point, intersection, etc.) or Lat. / Long.) Patient's ETA to Evacuation Location:

Helispot / Extraction Site Size and Hazards:

**5. ADDITIONAL RESOURCES / EQUIPMENT NEEDS:**

*Example: Paramedic/EMT, crews, immobilization devices, AED, oxygen, trauma bag, IV/fluid(s), splints, rope rescue, wheeled litter, HAZMAT, extrication*

**6. COMMUNICATIONS: Identify State Air/Ground EMS Frequencies and Hospital Contacts as applicable**

Function	Channel Name/Number	Receive (RX)	Tone/NAC *	Transmit (TX)	Tone/NAC *
COMMAND					
AIR-TO-GRND					
TACTICAL					

**7. CONTINGENCY: Considerations:** If primary options fail, what actions can be implemented in conjunction with primary evacuation method? Be thinking ahead..

**8. ADDITIONAL INFORMATION:** Updates/Changes, etc.

**REMEMBER:** Confirm ETAs of resources ordered. Act according to your level of training. Be Alert. Keep Calm. Think Clearly. Act Decisively.