

DAY

INCIDENT ACTION PLAN

GOOSMUS FIRE

WA-NES-002063



For maps, evaluations, and IAPs Scan the QR Code!



Monday, September 30, 2024
0600-2000 Operational Period

(Charge Codes)


AIY-221

PN R8Z0 (1522) [P]

STATE MOBILIZATION WA-WFS-521

State and Federal cost share breakdown

AIR	Daily	Approval	GROUND	Daily	Approval
DNR	%		DNR	%	
MOB	%		MOB	%	
BLM	%		BLM	%	

Incident Objectives	1. Incident Name GOOSMUS FIRE	2. Date Prepared 9/29/2024	3. Time Prepared 1200
4. Operational Period (Date and Time) 9/30/2024 0600-2000			
5. General Control Objectives for the Incident (include Alternatives) <ul style="list-style-type: none"> • Provide for the safety of firefighters and the public through utilization of strategic and deliberate risk assessment processes. Ensure incident within an incident protocols are established and understood by all. • Develop strategic plans to prioritize and protect identified values at risk to the surrounding private residences and communities. • Engage in transparent communication with agency administrators and local fire department officials, to ensure critical information is shared during the decision-making process. • Enhance relationships throughout the area through communication and active involvement with the stakeholders, including; residents, public agencies, community leaders, cooperators, and landowners. • Maintain fiscal accountability of the incident while supporting the needs of the host agencies and the community. • Assist in initial attack and support as requested by the host agencies while maintaining communication and coordination. 			
6. Weather Forecast for Operational Period			
See attached weather forecast			
7. General Safety Message			
<ul style="list-style-type: none"> • Provide for firefighter and public safety at all times. • Monitor compliance of 10 and 18 by all incident personnel. • Adhere to 2:1 work/rest ratio for all fire line personnel. • Aviation safety is high priority. Assess the risk against the benefit of the mission. • Ensure all assigned personnel understand emergency medical reporting & transport procedures including locations of nearest emergency responders & facilities. 			
8. Attachments (check if attached)			
ICS-202	9. Prepared by (PSC) Dusty Patrick	10. Approved by (IC) 	

ORGANIZATION ASSIGNMENT LIST				
1. Incident Name		GOOSMUS FIRE	9. LOGISTICS SECTION	
2. Date Prepared		9/29/2024	3. Time	1200
4. Operational Period		9/30/2024	0600-2000	Logs Chief
				Mike Bucy (O-1.12)
5. INCIDENT COMMANDER & STAFF			Logs Chief (t)	Jennifer Thompson (O-1.13)
Incident Commander		Andrew Stenbeck (O-1.1)	BCMG	Auora Bernard (O-44)
Safety Officer		Reed Heckly (O-23)	BCMG (t)	James Daeschler (O-1.18)
Safety Officer		Mark Knokey (O-51)		Aaron Culp (O-1.14)
Medical		Mary Andersen (O-16)		
Medical		Dan Garner (O-24)		
Information		Isabelle Hoygaard-Reeser (O-1.16)	Field	Aaron Coe (O-1.2)
Information (t)		Jessa Lewis (O-45)	Planning	Brian Hansen
6. AGENCY REPRESENTATIVE			a. Division A	
Agency		Name	DIVS	Tom Hall (O-42)
BLM		Shevawn Sapp	DIVS(t)	Austin Hatten (O-1.5)
BLM		Johnathan Meier	b. Division H	
WA DNR		Pat Ryan	DIVS	Brock Schuh (O-1.3)
WA DNR		Brett Walker		
WA DNR		Kyle Pomrankey	c. Division W	
State Fire Marshals Office		Aaron Robertson	DIVS	Daniel Montano (O-1.4)
Ferry County Sheriff		Ray Maycumber		
Ferry Fire Chief Dist 13		Eric Hewitt	c. Division NIGHT	
Ferry Fire Chief Dist 14		John Porter	DIVS	Jim Wheeler (O-50)
DEM		Steve Bonner		
WSP		Brian Briscoe		
7. PLANNING SECTION			11. FINANCE SECTION	
Planning Chief		Dusty Patrick (O-1.6)	FSC	Michelle Leonard (O-1.11)
RESL		Jessica Walston (v) (O-1.7)	FSC	Marcy Johnson (O-1.10)
SITL (t)		Eric Krausz (O-1.8)	EQRT	Sharleen Puckett (O-1.17)
GISS		Rose Beaton (v) (O-31)	PTRC(t)	Walt Seidel (O-13)
8. COMMUNICATIONS			12. CONTACTS / OTHER INFORMATION	
INCM		Jeff Smetzler (E-15.1)	NEWICC (509) 685-6900	
RADO		John Nelson (E-15.3)	Spokane Valley Comms: 509-389-2002	
COMT		Robert Leaming (E-15.2)	Spot Weather: 541-276-4493	
COMT		Kevin Judd (O-32)		
Prepared by:				
		Dusty Patrick PSC3		

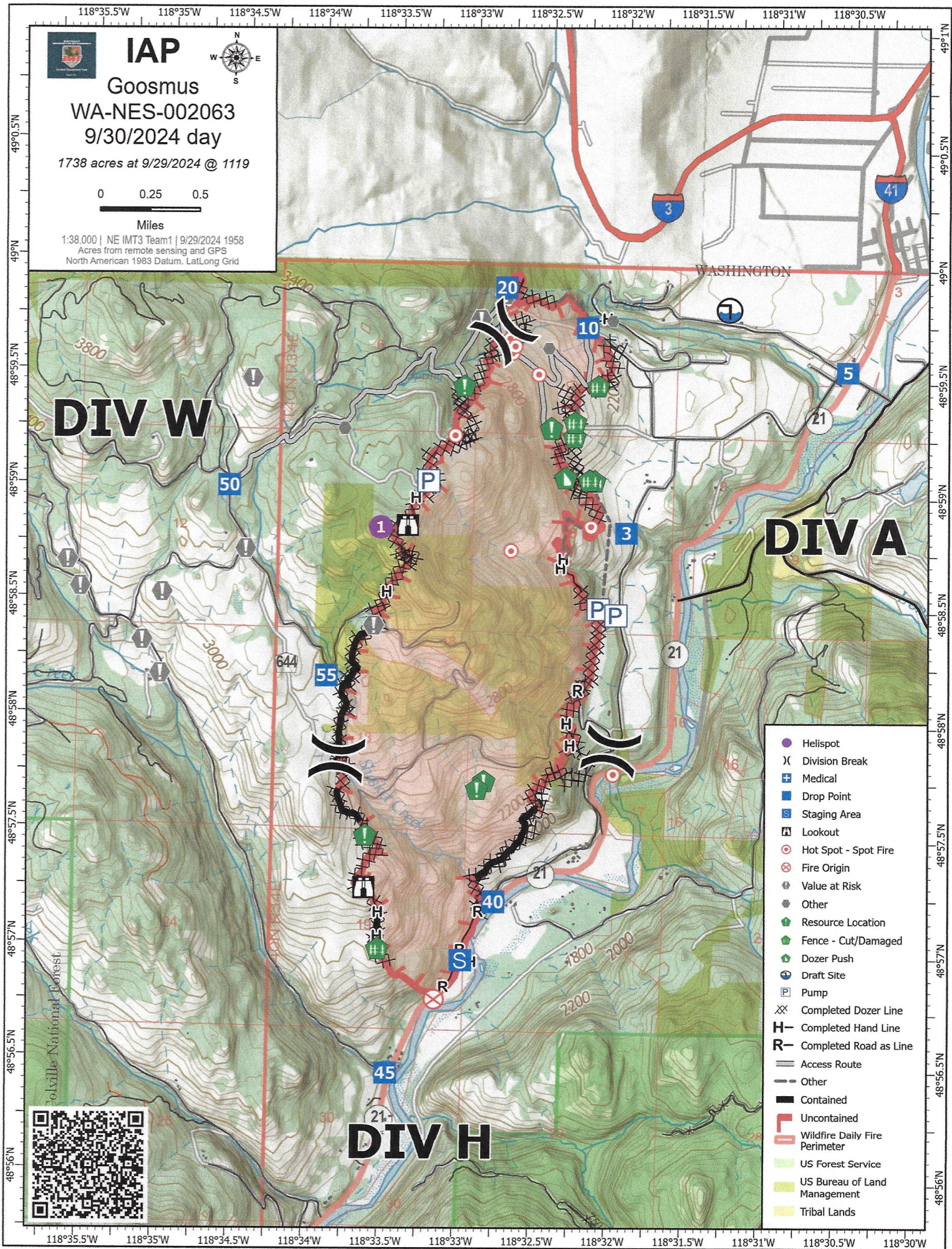
DIVISION ASSIGNMENT LIST			1. Branch		2. Division / Group			
3. Incident Name GOOSMUS FIRE			4. Operational Period Date: 9/30/2024		Page 1 of 2 A Time: 0600-2000			
5. Operations Personnel								
Operations Chief		Aaron Coe (O-1.2)		Division/Group Supervisor		Tom Hall (O-42) & Timothy Cawley-Murphee (O-43)		
Safety Officer		Reed Heckly (O-23) & Mark Knokey (O-51)				Austin Hatten (O-1.5)		
6. Resources Assigned this Period								
RO #	Strike Team/Task Force/Resource	Leader	# People	Contact (phone, radio freq, etc.)	EMT	LWD	Remarks	
C-8.1	TFLD	Dylan Chester	1					
C-10	CR21 - VALHALLA CANADIAN CREW		14		3			
C-11	CR21 - SENTINEL UC - CANADIAN CREW		12		3			
O-2	STEB	David Way	1			10/11		
O-3	STEN(t)	Tanner Stermkoski	1			10/10		
E-3	ENG5 - 2204 - WA-PCS	Nathan Jurgensen	3		1	10/10		
E-4	ENG5 - 2405 - WA-PCS	Travis Pakenen	4		1	10/10		
E-5	ENG5 - 5302 - WA-NWS	Chad Bowman	4			10/10		
E-6	ENG5 - E8201 - WA-SPS	Myles Reed	4		1	10/9		
E-7	ENG5 - ENGINE 1301 - WAOLS (WA-OLS-E5X-1301)	Morgan Reisdorfer	4		1	10/10		
O-2116	STL - WALLA WALLA	Shawn Ongers	1	509-386-3900		10/12		
E-2117	ENG4 - WALLA WALLA	Derick Schoessler	2		2	10/12		
E-2118	ENG4 - BENTON 4	Manuel Estrella	2	509-619-4086		10/12		
E-2119	ENG5 - WALLA WALLA 4	Ryan Chase	2		2	10/11		
E-2120	ENG5 - WEST BENTON	William Petersen	2			10/11		
E-2122	WTS2 - WALLA WALLA 8	Tim Daves	1		1	10/11		
			57					
7. Work Assignments								
Identify and mitigate spot fires on north end of division Continue assessing structures along 4th of July road and prepping as necessary Begin gridding to confirm containment lines								
8. Special Instructions								
AMBO 2 staged at DP 5 (Post Office)								
9. Communication Summary								
Function	Name	Mode	RX FREQ	N/W	RX TONE/NAC	TX FREQ	N/W	TX TONE/NAC
PRIMARY COMMAND	CMD 2	A	154.5275	N	186.2	158.4	N	186.2
NIGHT SHIFT COMMAND	REPUBLIC	A	159.36	N	118.8	151.235	N	118.8
FERRY COUNTY DISPATCH	FY14REPT	A	153.845	N	91.5	158.805	N	103.5
DIVISION A	SILVER	A	163.89	N	0	163.89	N	0
STRUCTURE	TAC 8	A	151.7	N	186.2	151.7	N	186.2
A/G FIXED	A/G 1	A	167.8375	N	0	167.8375	N	156.7
A/G ROTOR	A/G 2	A	169.15	N	0	169.15	N	203.5
AIRGUARD	AIRGUARD	A	168.625	N	0	168.625	N	110.9
Prepared by RESL(t) Jessica Walston		Approved by (PSC) Dusty Patrick			Date: 9/29/2024		Time: 1430	

DIVISION ASSIGNMENT LIST			1. Branch		2. Division / Group Page 2 of 2				A
3. Incident Name GOOSMUS FIRE			4. Operational Period Date: 9/30/2024 Time: 0600-2000						
5. Operations Personnel									
Operations Chief		Aaron Coe (O-1.2)		Division/Group Supervisor		Tom Hall (O-42) & Timothy Cawley-Murphee (O-43)			
Safety Officer		Reed Heckly (O-23) & Mark Knokey (O-51)				Austin Hatten (O-1.5)			
6. Resources Assigned this Period									
RO #	Strike Team/Task Force/Resource	Leader	# People	Contact (phone, radio freq, etc.)	EMT	LWD	Remarks		
O-2101	STL - SNO. 22	Travis Hots	1			10/11			
O-2108	STL(t) - NORTH SNOHOMISH RFA	Keith Johnson	1			10/10			
E-2102	ENG3 - SNO. 26	Shane Roeder	3		3	10/11			
E-2103	ENG3 - SNO. 22	Jim Bansbach	2		2	10/11			
E-2104	ENGS6 - SNO. 22	Robert White	2		2	10/11			
E-2105	ENG3 - SNO. 16	Scott Anderson	3		3	10/11			
E-2107	WTS2 - WHATCOM 14	Cameron Clark	1			10/10			
LOL	ENG - 621	Savannah Stranger	3	509-540-0485	1	10/10			
E-38	SKG3 - DARRELL GREEN - 553667	Scott Shinall	2	425-445-6603		10/12			
O-10	HEQB	Chris Brandon	1			10/11			
O-8	HEQB	Michael Correia	1			10/12			
E-2	DZR3 - PARADIGM INDUSTRIES LLC - A29862	JT Mcelhose	1			10/9			
E-17	WTS2 - SC RIVER LAND MANAGEMENT SOLUTIONS, LLC - 93-102370	TIM SCRIVER	1			10/10			
E-34	AMBO 2 - PECN 2	Beth Osgood	2	509-710-0472		10/11			
			24						
7. Work Assignments									
Identify and mitigate spot fires on north end of division Continue assessing structures along 4th of July road and prepping as necessary Begin gridding to confirm containment lines									
8. Special Instructions									
AMBO 2 staged at DP 5 (Post Office)									
9. Communication Summary									
Function	Name	Mode	RX FREQ	N/W	RX TONE/NAC	TX FREQ	N/W	TX TONE/NAC	
PRIMARY COMMAND	CMD 2	A	154.5275	N	186.2	158.4	N	186.2	
NIGHT SHIFT COMMAND	REPUBLIC	A	159.36	N	118.8	151.235	N	118.8	
FERRY COUNTY DISPATCH	FY14REPT	A	153.845	N	91.5	158.805	N	103.5	
DIVISION A	SILVER	A	163.89	N	0	163.89	N	0	
STRUCTURE	TAC 8	A	151.7	N	186.2	151.7	N	186.2	
A/G FIXED	A/G 1	A	167.8375	N	0	167.8375	N	156.7	
A/G ROTOR	A/G 2	A	169.15	N	0	169.15	N	203.5	
AIRGUARD	AIRGUARD	A	168.625	N	0	168.625	N	110.9	
Prepared by RESL(t) Jessica Walston		Approved by (PSC) Dusty Patrick			Date: 9/29/2024		Time: 1430		

DIVISION ASSIGNMENT LIST			1. Branch		2. Division / Group Page 1 of 1				H
3. Incident Name GOOSMUS FIRE			4. Operational Period Date: 9/30/2024 Time: 0600-2000						
5. Operations Personnel									
Operations Chief		Aaron Coe (O-1.2)		Division/Group Supervisor		Brock Schuh (O-1.3)			
Safety Officer		Reed Heckly (O-23) & Mark Knokey (O-51)							
6. Resources Assigned this Period									
RO #	Strike Team/Task Force/Resource	Leader	# People	Contact (phone, radio freq, etc.)	EMT	LWD	Remarks		
C-8	CR2I - NW - NES - NORTH COLUMBIA - DNR	Eric Olsen	20			10/10			
O-18	SMOD - LACAMAS HAND CREW	Jayme Morgan	8			10/12			
O-19	SMOD - PEAK IA MODULE	Cole Phelan	11			10/11			
O-33	SMOD - NEWAUKUM MODULE	Joshua White	11		1	10/12			
O-6	FMOD - NEWMAN BEN A	Ben Newman	2			10/11			
O-7	FELB	John Walker	1			10/12			
O-39	TFLD	Philip Shafto	1			10/12			
E-25	ENG6 - ALDER CREEK FIRE INC - B01948	Steve Ward	3			10/12			
E-40	ENG6 - THE GENERAL CONTRACTOR, LLC - B96605	Tom Adams	3			10/12			
E-42	ENG6 - METHOW RIVER WILD FIRE - 500915	Andy Dalton	3			10/12			
E-43	ENG6 - METHOW RIVER WILD FIRE - 150300	Leonardo Sanche	3			10/11			
E-16	ENG5 - AR 7401 - DNR	James Spencer	4		2	10/11			
E-45	WTS3 - CIAIS, ANDRE - 077186	Jeffery Echols	1			10/12			
			71						
7. Control Operations:									
Mop up 100' off primary containment lines Reduce/mitigate hazard trees for fire fighter and public safety Mop up visible smoke from HWY 21 Minimize threat to values at risk									
8. Special Instructions									
9. Communication Summary									
Function	Name	Mode	Frequency						
PRIMARY COMMAND	CMD 2	A	154.5275	N	186.2	158.4	N	186.2	
NIGHT SHIFT COMMAND	REPUBLIC	A	159.36	N	118.8	151.235	N	118.8	
FERRY COUNTY DISPATCH	FY14REPT	A	153.845	N	91.5	158.805	N	103.5	
DIVISION H	TAC 6	A	151.76	N	186.2	151.76	N	186.2	
STRUCTURE	TAC 8	A	151.7	N	186.2	151.7	N	186.2	
A/G FIXED	A/G 1	A	167.8375	N	0	167.8375	N	156.7	
A/G ROTOR	A/G 2	A	169.15	N	0	169.15	N	203.5	
AIRGUARD	AIRGUARD	A	168.625	N	0	168.625	N	110.9	
Prepared by RESL(t) Jessica Walston		Approved by (PSC) Dusty Patrick			Date: 9/29/2024		Time: 1430		

DIVISION ASSIGNMENT LIST			1. Branch		2. Division / Group			Page 1 of 2		W	
3. Incident Name				4. Operational Period							
GOOSMUS FIRE				Date: 9/30/2024				Time: 0600-2000			
5. Operations Personnel											
Operations Chief			Aaron Coe (O-1.2)			Division/Group Supervisor			Daniel Montano (O-1.4)		
Safety Officer			Reed Heckly (O-23) & Mark Knokey (O-51)								
6. Resources Assigned this Period											
RO #	Strike Team/Task Force/Resource	Leader	# People	Contact (phone, radio freq, etc.)	EMT	LWD	Remarks				
C-4	CR2I - SRV #12	Julian Jacobo	21			10/12					
C-5	CR2I - PatRick Environmental, Inc. NCC	Garth Chambers	20			10/12					
C-6	CR2I - DIAMOND FIRE NCC 11B	Larry Eckelman	20	530-515-9139		10/12					
C-9	CR2I - NW - NES - HIGHLANDS - DNR	Seth Schertenleib	21			10/11					
O-40	TFLD	Andrew Schaffran	1			10/12					
E-22	ENG6 - BAILEY ENTERPRISES, L.L.C. -	Greg Bailey	3			10/11					
E-23	ENG6 - BLACKSTONE FORESTRY LLC - B76286	Chad Sheets	3			10/11					
E-24	ENG6 - WILD FIRE SERVICES, INC - D10873	Mike Foster	3			10/11					
E-26	ENG6 - ALDER CREEK FIRE INC - E02096	Vitas Labanausk	3			10/12					
O-2109	CENTRAL STRIKE TEAM	Wes Long	1	509-637-5559		10/11					
E-2110	ENG6 - THURSTON 3	Scott Santhuff	2			10/12					
E-2111	ENG5 - HOQUAIM	John Phillips	2			10/12					
E-2112	ENG6 - MONTENSANO	Spencer Coleman	3			10/12					
E-2113	ENG6 - KITTITAS 1	Curtis Taylor	2			10/12					
E-2114	ENG6 - SNOHOMISH 21	Mason Anderson	2	360-435-3331		10/12					
E-2115	WTS2 - W. THURSTON	Colby Lyon	1			10/12					
			108								
7. Control Operations:											
Mop up 50' from containment lines Structure protection and triage Minimize threat to values at risk											
8. Special Instructions											
AMB1 will be staged at DP 50, ALS 21 will be staged at DP 55											
9. Communication Summary											
Function	Name	Mode	Frequency								
PRIMARY COMMAND	CMD 2	A	154.5275	N	186.2	158.4	N	186.2			
NIGHT SHIFT COMMAND	REPUBLIC	A	159.36	N	118.8	151.235	N	118.8			
FERRY COUNTY DISPATCH	FY14REPT	A	153.845	N	91.5	158.805	N	103.5			
DIVISION W	TAC 7	A	151.625	N	186.2	151.625	N	186.2			
STRUCTURE	TAC 8	A	151.7	N	186.2	151.7	N	186.2			
A/G FIXED	A/G 1	A	167.8375	N	0	167.8375	N	156.7			
A/G ROTOR	A/G 2	A	169.15	N	0	169.15	N	203.5			
AIRGUARD	AIRGUARD	A	168.625	N	0	168.625	N	110.9			
Prepared by RESL(t) Jessica Waiston			Approved by (PSC) Dusty Patrick			Date: 9/29/2024		Time: 1430			

DIVISION ASSIGNMENT LIST			1. Branch		2. Division / Group				
3. Incident Name GOOSMUS FIRE			4. Operational Period Date: 9/30/2024 Time: 0600-2000						
5. Operations Personnel									
Operations Chief <i>Aaron Coe (O-1.2)</i>			Division/Group Supervisor <i>Daniel Montano (O-1.4)</i>						
Safety Officer <i>Reed Heckly (O-23) & Mark Knokey (O-51)</i>									
6. Resources Assigned this Period									
RO #	Strike Team/Task Force/Resource	Leader	# People	Contact (phone, radio freq, etc.)	EMT	LWD	Remarks		
O-9	HEQB	Timothy Bruner	1			10/11			
E-1	DZR2 - TOP GRADE EXCAVATION - 93-102575	Mike Friend	1			10/10			
E-8	DZR4 - STOTTS CONSTRUCTION, INC	Miles Anderson	1			10/10			
E-20	WTS2 - NORTHWEST TREE SERVICE -	Corey Jones	1			10/11			
E-21	WTS2 - MICA PEAK INDUSTRIES - 93-105797	Logan Madson	1			10/11			
O-5	FMOD - FALLER MODULE - NEWMAN BEN A - MOD 2 -	Ethan Newman	2			10/11			
E-41	SKG2 - LOST CREEK LOGGING	Mike Aubert	2			10/12			
E-52	SKG4 - DARRELL GREEN - 031057	Steve Michlitch	2	509-322-0504		10/13			
E-28	AMB1 - CURLEW MED-1	Teresa Jenkins	3	425-829-2534		10/10			
O-20	EMPF - ALS - 21	Brian Spendlove	1	720-835-3145		10/12			
			15						
7. Control Operations:									
Mop up 50' from containment lines Structure protection and triage Minimize threat to values at risk									
8. Special Instructions									
AMB1 will be staged at DP 50, ALS 21 will be staged at DP 55									
9. Communication Summary									
Function	Name	Mode	Frequency						
PRIMARY COMMAND	CMD 2	A	154.5275	N	186.2	158.4	N	186.2	
NIGHT SHIFT COMMAND	REPUBLIC	A	159.36	N	118.8	151.235	N	118.8	
FERRY COUNTY DISPATCH	FY14REPT	A	153.845	N	91.5	158.805	N	103.5	
DIVISION W	TAC 7	A	151.625	N	186.2	151.625	N	186.2	
STRUCTURE	TAC 8	A	151.7	N	186.2	151.7	N	186.2	
A/G FIXED	A/G 1	A	167.8375	N	0	167.8375	N	156.7	
A/G ROTOR	A/G 2	A	169.15	N	0	169.15	N	203.5	
AIRGUARD	AIRGUARD	A	168.625	N	0	168.625	N	110.9	
Prepared by RESL(t) Jessica Walston			Approved by (PSC) Dusty Patrick			Date: 9/29/2024		Time: 1430	



IAP

Goosmus

WA-NES-002063

9/30/2024 day

1738 acres at 9/29/2024 @ 1119

0 0.25 0.5

Miles

1:38,000 | NE IMT3 Team1 | 9/29/2024 1958
 Acres from remote sensing and GPS
 North American 1983 Datum, Lat/Long Grid

DIV W

DIV A

DIV H

- Helispot
-) Division Break
- ⊕ Medical
- Drop Point
- ⊞ Staging Area
- ⚠ Lookout
- ⊙ Hot Spot - Spot Fire
- ⊗ Fire Origin
- ⊕ Value at Risk
- Other
- ⬆ Resource Location
- ⬆ Fence - Cut/Damaged
- ⬆ Dozer Push
- ⊕ Draft Site
- ⊞ Pump
- ⊞ Completed Dozer Line
- H Completed Hand Line
- R Completed Road as Line
- Access Route
- Other
- ⬆ Contained
- ⬆ Uncontained
- ⬆ Wildfire Daily Fire Perimeter
- US Forest Service
- US Bureau of Land Management
- Tribal Lands



WEATHER	1. Incident Name GOOSMUS FIRE	2. Date Prepared 9/29/2024	3. Time Prepared 1200
---------	----------------------------------	-------------------------------	--------------------------

Forecast is based on start time of 1130 PDT on September 29.
If conditions become unrepresentative...contact the National Weather Service.

.DISCUSSION...

After the cold front passage Sunday, winds Monday and Monday night will be much lighter, but the fire will remain dry. Another dry cold front passage is expected Tuesday night into Wednesday, but the next one will not be as windy or as dry as the Sunday cold front. Expecting a brisk northwest wind for much of the day Wednesday.

.MONDAY...

Sky/weather.....Sunny. Frost possible in the morning.
CWR.....0 percent.
LAL.....1.
Max temperature.....62.
Min humidity.....23 percent.
Wind (20 ft).....South/southeast winds 2 to 6 mph.
Mixing height.....3500 ft AGL.
Transport winds.....West around 5 mph.
Haines Index.....3 Very Low.

.MONDAY NIGHT...

Sky/weather.....Mostly clear in the evening becoming mostly cloudy.
CWR.....0 percent.
LAL.....1.
Min temperature.....35.
Max humidity.....85 percent.
Wind (20 ft).....Light and variable winds 0 to 2 mph.
Mixing height.....Near surface.
Transport winds.....Southwest 3 to 6 mph.
Haines Index.....2 Very Low.

.TUESDAY...

Sky/weather.....Mostly cloudy.
CWR.....0 percent.
LAL.....1.
Max temperature.....64.
Min humidity.....26 percent.
Wind (20 ft).....Southwest winds 3 to 6 mph.
Mixing height.....3000 ft AGL.
Transport winds.....Southwest around 5 to 10 mph.
Haines Index.....3 Very Low.

.TUESDAY NIGHT...

Sky/weather.....Partly cloudy.
CWR.....0 percent.
LAL.....1.
Min temperature.....35.
Max humidity.....75 percent.
Wind (20 ft).....West winds 3 to 6 mph. Wind gusts to 10 mph in the late evening.
Mixing height.....Near surface.
Transport winds.....Southwest 3 to 6 mph.
Haines Index.....2 Very Low.

.WEDNESDAY...

Sky/weather.....Mostly sunny.
CWR.....0 percent.
LAL.....1.
Max temperature.....61.
Min humidity.....27 percent.
Wind (20 ft).....Northwest winds 8 to 12 mph. Wind gusts up to 18 mph in the afternoon.
Mixing height.....3500 ft AGL.
Transport winds.....West around 5 mph.
Haines Index.....3 Very Low.

INCIDENT RADIO COMMUNICATIONS PLAN I-205	1. INCIDENT NAME GOOSMUS	2. DATE/TIME PREPARED 9/29/2024 0640	3. OPERATIONAL PERIOD DATE/TIME 9/30/24 0600-2000
---	------------------------------------	---	--

4. BASIC RADIO CHANNEL UTILIZATION											
Ch #	Function	Channel Name	Assignment	RX Freq	N/W	RX Tone/NAC	TX Freq	N/W	TX Tone/NAC	Mode Analog (A) Digital (D) Mixed (M)	Remarks
1	COMMAND	CMD 1	CMD	151.5125	N	186.2	158.4075	N	186.2	A	
2	COMMAND	CMD 2	CMD	154.5275	N	186.2	158.4000	N	186.2	A	PRIMARY COMMAND
3	COMMAND	REPUBLIC	CMD	159.3600	N	118.8	151.2350	N	118.8	A	NIGHT SHIFT COMMAND
4	COMMAND	FY14REPT	CMD	153.8450	N	91.5	158.8050	N	103.5	A	FERRY COUNTY DISPATCH
5	TAC	SILVER	TAC	163.8900	N	0.0	163.8900	N	0.0	A	DIVISION A
6	TAC	TAC 6	TAC	151.7600	N	186.2	151.7600	N	186.2	A	DIVISION H
7	TAC	TAC 7	TAC	151.6250	N	186.2	151.6250	N	186.2	A	DIVISION W
8	TAC	TAC 8	TAC	151.7000	N	186.2	151.7000	N	186.2	A	STRUCTURE
9	TAC	TAC 9	TAC	151.5050	N	186.2	151.5050	N	186.2	A	
10	TAC	REDNET	TAC	153.8300	N	0.0	153.8300	N	156.7	A	REDNET
11	TAC	VTAC 11	TAC	151.1375	N	0.0	151.1375	N	156.7	A	
12	TAC	VTAC 12	TAC	154.4525	N	0.0	154.4525	N	156.7	A	
13	TAC	OSSCR	TAC	156.1350	N	0.0	156.1350	N	203.5	A	MEDEVAC
14	A/G	A/G 1	A/G	167.8375	N	0.0	167.8375	N	156.7	A	A/G PRIMARY
15	A/G	A/G 2	A/G	169.1500	N	0.0	169.1500	N	203.5	A	A/G SECONDARY
16	AIRGUARD	AIRGUARD	A/G	168.6250	N	0.0	168.6250	N	110.9	A	AIRGUARD

5. Special Instructions: CMD 1@ ICP AND CMD 2 ARE LINKED, VIA UHF. BATTERIES AVAILABLE AT COMMS TRAILER IN FIRE CAMP AT FAIRGROUNDS

6. I-205 Prepared By: Communications Unit Leader	Name: JEFFREY SMETZLER
Signature: 	

Incident: **Goosmus**

Date: **Monday, 9/30/24**

Operational Period: **Day Shift**

SAFETY MESSAGE

SAFETY IS OUR TOP PRIORITY

Firefighter safety comes first on every fire, every time.

MAKE SURE LCES IS IN PLACE

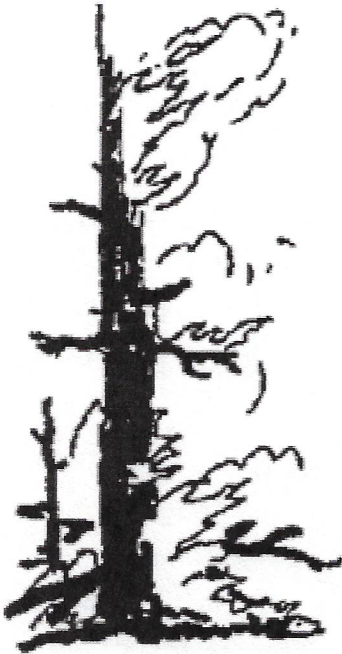
Each firefighter must know the interconnection of LCES - lookouts, communications, escape routes, and safety zones. LCES should be established before engaging the fire: Select lookouts if needed and post in strategic locations, establish communications with coworkers and adjoining forces, determine escape routes and make them known, and select safety zones adequate for the fire behavior.

MAJOR HAZARDS AND RISKS

- | | |
|--|--|
| <ul style="list-style-type: none">• Snags and burned out trees —heads up!• Steep slopes, rolling material—watch footing• Ash pits and stump holes• Poor visibility while driving from dusty roads | <ul style="list-style-type: none">• Driving: One-way roads, speed, looky-loos• Civilian traffic in the fire area• Deer on highway dawn and dusk• End-of-day fatigue while driving |
|--|--|

TODAY'S SAFETY EMPHASIS

MOPUP



- Watch out for hot stump holes and ash pits.
- Stay alert for fire-weakened snags and green trees. Keep heads up and watch out for each other.
- Beware of complacency. Keep your mind focused on your work.
- Wear proper and good condition fire boots to avoid slips and falls.
- Pull and lift straight-on using your legs for primary force. Don't pull or lift while twisting your back.
- Wear eye protection.
- Go slowly and watch your step on steep slopes; watch spacing.
- Use chain guards when transporting saws. Do not drop start saws!

GENERAL WATCHOUTS IN PLAY (Do you see other watchouts also?)

- #9. Building line downhill without safe anchor point.
- #11. Unburned fuel between you and the fire.
- #13. On a hillside where rolling material can ignite fuel below.
- #17. Terrain and fuels make escape to safety zones difficult.

Safety Officer: **Reed Heckly**





Line Safety Officer: **YOU!**

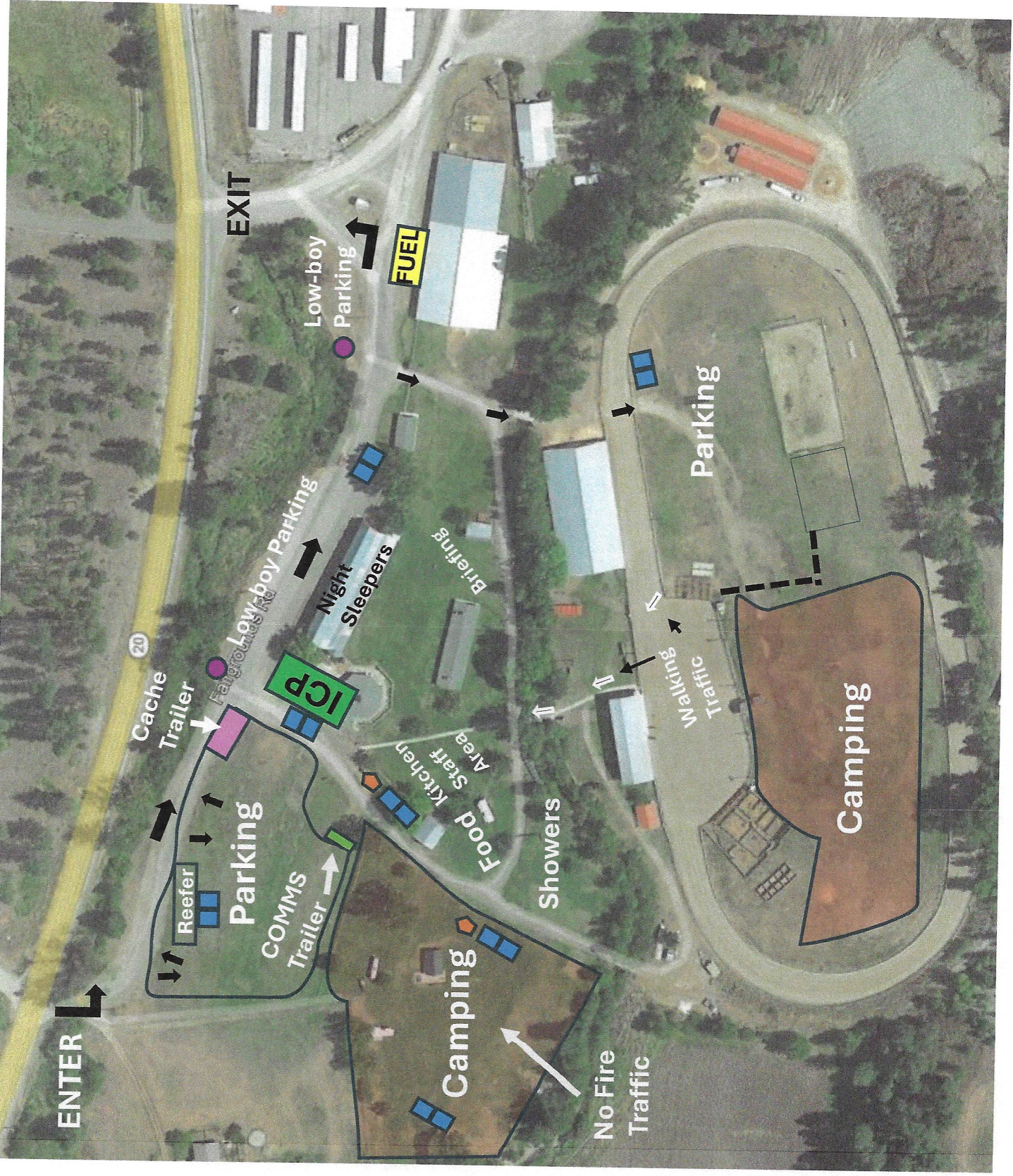
MEDICAL PLAN (ICS 206 WF)

Controlled Unclassified Information//Basic

1. Incident/Project Name				2. Operational Period							
WA-NES-002063 Goosmus Fire				September 30, 2024							
3. Ambulance Services											
Name		Complete Address		Phone & EMS Frequency		Advanced Life Support (ALS) Yes No					
Ferry County Dist. 14 Fire		24 Catherine Creek Rd Curlew, WA 99118		911/FY14 REPT		<input type="checkbox"/>	<input checked="" type="checkbox"/>				
Ferry County EMS Dist. 1		499 W 9th St Republic WA 99156		911		<input type="checkbox"/>	<input checked="" type="checkbox"/>				
4. Air Ambulance Services											
Name		Phone		Type of Aircraft & Capability							
Life Flight Network		800-232-0911		Helicopter, ALS							
Air Lift Northwest		888-835-1599		Helicopter, ALS							
Spokane County Sheriff – Rescue 3		509-532-8900		Huey with Hoist, ALS							
5. Hospitals											
Name Complete Address		GPS Datum – WGS 84 Coordinate Standard Degrees Decimal Minutes DD° MM.MMM' N - Lat DD° MM.MMM' W - Long		Travel Time Air Gnd		Phone		Helipad Yes No		Level of Care Facility	
		Lat:	48°32.449000'N					20 Min	70 Min		
Providence Mt Carmel Hospital		Long:	117°53.492167'W	10 Min	40 Min	509-775-3333	<input checked="" type="checkbox"/>	<input type="checkbox"/>	Level 4		
		VHF:									
		Lat:	48°39.157'N								
Ferry County Memorial Hospital		Long:	118°44.062'W	45 Min	180 Min	509-474-3131	<input checked="" type="checkbox"/>	<input type="checkbox"/>	Level 2		
		VHF:									
		Lat:	47°38.947667'N								
Providence Sacred Heart Medical Center		Long:	117°24.784667'W	90 Min	330 Min	206-223-3177	<input checked="" type="checkbox"/>	<input type="checkbox"/>	Level 1		
		VHF:									
		Lat:	47°36.168833'N								
Harborview Medical Center		Long:	122°19.481000'W								
		VHF:									
		Lat:	47°36.168833'N								
6. Division Branch Group								Area Location Capability			
A		EMS Responders & Capability:		AMBO 2							
		Equipment Available on Scene:									
		Medical Emergency Channel:		Goosmus Communications							
		ETA for Ambulance to Scene:		Air: 50 Min Ground: 20 Min							
H		EMS Responders & Capability:		Multiple within Modules							
		Equipment Available on Scene:									
		Medical Emergency Channel:		Goosmus Communications							
		ETA for Ambulance to Scene:		Air: 50 min Ground: 20 min							
W		EMS Responders & Capability:		AMBO 1, ALS 21 Spendlove							
		Equipment Available on Scene:									
		Medical Emergency Channel:		Goosmus Communications							
		ETA for Ambulance to Scene:		Air: 50 Min Ground: 20 Min							
8. Prepared By (Medical Unit Leader)				9. Date/Time		10. Reviewed By (Safety Officer)			11. Date/Time		
Mary Andersen				9/29/2024		<i>Keed Heckly</i>			9/29/2024		

LEGEND

-  Porta-johns
-  Hand washing
-  Hydrant
-  Thru-Traffic Flow



Goosmus Fire

LOGISTICS INFORMATION

ICP	0600-2200
FOOD	Breakfast: 0500-0800 Dinner: 1800-2100 Food times may change. Late returning to camp? Please call the Logistics Chief phone or communications via radio.
SHOWERS	Shower times will be 0500 to 1100; 1500-2300
FUELING HOURS	0530 to 2100. Fuel truck will be doing rounds during the day supplying the camp and may not always be available.

- Fuel truck available at the east end of the camp near the triangle. ***Any fuel dispensed will be a deduction from your final invoice. Have your resource order number ready.***
- Please see the map for parking and other camp information. It can change daily.
- Please pay attention to the “Entrance/Exit” signage on our maps. This is to help facilitate the morning and evening rush.
- Tenders: Please fill up at the hydrants along Fairgrounds Road during non-rush hour times. Track your gallonage on your shift tickets please.
 - The 4th of July Creek Road fill site is active. It can be a tight turn but supplies about 1,000gpm. It is just west of the Danville Post Office and marked with blue ribbon. You do not need to keep track of these fills.
- On GMs please include contact name and phone number
 - Be detailed on what you want
 - Write very clearly
 - Go through your Div Sup and Ops
- *Please keep vehicle speeds down through fire camp and adjacent roads.*
- Lunches, water, and sports drinks will be available in the reefer.
- Ice is available on in the reefer as well.
- We will have a camp MEDL set up—They are operating at the ICP and have a med supply for bumps, cuts, and blisters (and other things). There is also a “sick area” set as well. If you are sick, please phone Mary Andersen at 509-680-2846. Do not come into the ICP feeling ill.

PIO Corner

Cindy Preston
We are in direct line of the fire north of the border. Amazing work by everyone on both sides of the border & the bravery of all on the ground and in the air has been incredible to witness to say the least. Thank you to each and every one who has been tackling this fire! We appreciate you more than you'll ever know.

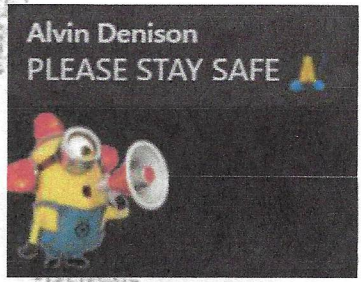
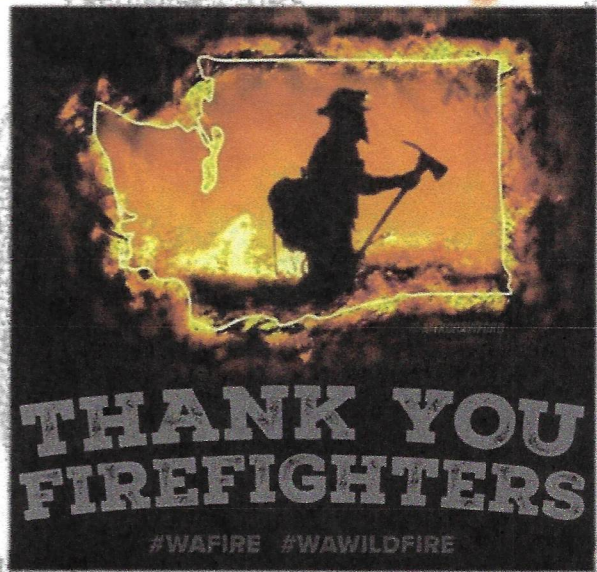
Robert Rhéaume
Cindy Preston So very scary with as fast as it was traveling due to the winds. Great work from both sides of the border. Let's hope it fizzles out soon.

Helga Baker
🙏 Praying for all firefighters, service men/woman

Chris Livers
Please, everyone be safe. thank you firefighters and anyone helping.

From Our Community to You

Kelly Nasmyth
Huge thank you!!!!



Maureen Haworth
Thank you and be safe!

Thank You for What You Do!

Nicole Lee
Cindy Preston Thank you to all the firefighters out there fighting the fires!!

We Love All Crew and Fire Photos! Help us tell your story to the public
Text them to: 509-808-6720 or email to WildGoatFire@gmail.com

We would love to share with the community how hard you are working.

Let us know if questions arise and direct them to:
509-808-6720

Lisa Cameron
Thank you to all the firefighters from Grand Forks BC 🙏❤️

FINANCE MESSAGE

1. Incident Name

Goosmus

2. Date Prepared

9/29/2024

3. Time Prepared

9:59

Please remember to keep your time up to date and CTRs turned in for a smooth demobe!

Please submit your original Shift Tickets and/or CTRs directly to us at morning briefing or ICP.

Have a safe and wonderful shift!

9. Prepared by

Michelle Leonard (O-1.11)

MEDICAL PLAN (ICS 206 WF)

Controlled Unclassified Information//Basic

Medical Incident Report

FOR A NON-EMERGENCY INCIDENT, WORK THROUGH CHAIN OF COMMAND TO REPORT AND TRANSPORT INJURED PERSONNEL AS NECESSARY.

FOR A MEDICAL EMERGENCY: IDENTIFY ON SCENE INCIDENT COMMANDER BY NAME AND POSITION AND ANNOUNCE "MEDICAL EMERGENCY" TO INITIATE RESPONSE FROM IMT COMMUNICATIONS/DISPATCH.

Use the following items to communicate situation to communications/dispatch.

1. CONTACT COMMUNICATIONS / DISPATCH (Verify correct frequency prior to starting report)

Ex: "Communications, Div. Alpha. Stand-by for Emergency Traffic."

2. INCIDENT STATUS: Provide incident summary (including number of patients) and command structure.

Ex: "Communications, I have a Red priority patient, unconscious, struck by a falling tree. Requesting air ambulance to Forest Road 1 at (Lat./Long.) This will be the Trout Meadow Medical, IC is TFLD Jones. EMT Smith is providing medical care."

Severity of Emergency / Transport Priority	<input type="checkbox"/> RED / PRIORITY 1 Life or limb threatening injury or illness. Evacuation need is IMMEDIATE <i>Ex: Unconscious, difficulty breathing, bleeding severely, 2^o – 3^o burns more than 4 palm sizes, heat stroke, disoriented.</i> <input type="checkbox"/> YELLOW / PRIORITY 2 Serious Injury or illness. Evacuation may be DELAYED if necessary. <i>Ex: Significant trauma, unable to walk, 2^o – 3^o burns not more than 1-3 palm sizes.</i> <input type="checkbox"/> GREEN / PRIORITY 3 Minor Injury or illness. Non-Emergency transport <i>Ex: Sprains, strains, minor heat-related illness.</i>	
Nature of Injury or Illness & Mechanism of Injury		<i>Brief Summary of Injury or Illness (Ex: Unconscious, Struck by Falling Tree)</i>
Transport Request		<i>Air Ambulance / Short Haul/Hoist Ground Ambulance / Other</i>
Patient Location		<i>Descriptive Location & Lat. / Long. (WGS84)</i>
Incident Name		<i>Geographic Name + "Medical" (Ex: Trout Meadow Medical)</i>
On-Scene Incident Commander		<i>Name of on-scene IC of Incident within an Incident (Ex: TFLD Jones)</i>
Patient Care		<i>Name of Care Provider (Ex: EMT Smith)</i>

3. INITIAL PATIENT ASSESSMENT: Complete this section for each patient as applicable (start with the most severe patient)

Patient Assessment: See IRPG page 106

Treatment:

4. TRANSPORT PLAN:

Evacuation Location (if different): (Descriptive Location (drop point, intersection, etc.) or Lat. / Long.) Patient's ETA to Evacuation Location:

Helispot / Extraction Site Size and Hazards:

5. ADDITIONAL RESOURCES / EQUIPMENT NEEDS:

Example: Paramedic/EMT, Crews, Immobilization Devices, AED, Oxygen, Trauma Bag, IV/Fluid(s), Splints, Rope rescue, Wheeled litter, HAZMAT, Extrication

6. COMMUNICATIONS: Identify State Air/Ground EMS Frequencies and Hospital Contacts as applicable

Function	Channel Name/Number	Receive (RX)	Tone/NAC *	Transmit (TX)	Tone/NAC *
COMMAND					
AIR-TO-GRND					
TACTICAL					

7. CONTINGENCY: Considerations: If primary options fail, what actions can be implemented in conjunction with primary evacuation method? Be thinking ahead.

8. ADDITIONAL INFORMATION: Updates/Changes, etc.

REMEMBER: Confirm ETA's of resources ordered. Act according to your level of training. Be Alert. Keep Calm. Think Clearly. Act Decisively.