

NIGHT

INCIDENT ACTION PLAN

GOOSMUS FIRE

WA-NES-002063



For maps, evaluations, and IAPs Scan the QR Code!

9/27/2024-9/28/2024



1800-0800 Operational Period

AIY-221

PN R8Z0 (1522) [P]

STATE MOBILIZATION WA-WFS-521

ORGANIZATION ASSIGNMENT LIST			
1. Incident Name		GOOSMUS FIRE	
2. Date Prepared		9/27/2024	3. Time 1200
4. Operational Period		9/27/2024-9/28/2024	1800-0800
5. INCIDENT COMMANDER & STAFF			9. LOGISTICS SECTION
Incident Commander	Andrew Stenbeck (O-1.1)		Logs Chief
Safety Officer	Reed Heckly (O-23)		Mike Bucy (O-1.12)
Medical	Mary Andersen (O-16)		Logs Chief (t)
Information	Issabelle Hoygaard-Reeser (O-1.16)		Jennifer Thompson (O-1.13)
			Logs Chief (t)
			Auora Bernard (O-44)
			BCMG
			James Daeschler (O-1.18)
			BCMG (t)
			Aaron Culp (O-1.14)
6. AGENCY REPRESENTATIVE			10. OPERATIONS SECTION
Agency	Name		Field
USFS	Luke Decker		Aaron Coe (O-1.2)
USFS	Sharleen Puckett		Planning
USFS	Mandie Willenberg		Brian Hansen
BLM	Lonnie Newton		a. Division A
BLM	Johnathan Meier		DIVS
WA DNR	Pat Ryan		Tom Hall
WA DNR	Brett Walker		DIVS(t)
WA DNR	Kyle Pomrankey		Austin Hatten (O-1.5)
State Fire Marshal	Aaron Robertso		b. Division H
Ferry County Sheriff	Amy Rooker		DIVS
Ferry Fire Chief Dist 13	John Porter		Brock Schuh (O-1.3)
Ferry Fire Chief Dist 14	John Foster		
DEM	Steve Bonner		c. Division W
			DIVS
			Daniel Montano (O-1.4)
			c. Division NIGHT
			DIVS
			Brock Henneman
7. PLANNING SECTION			11. FINANCE SECTION
Planning Chief	Dusty Patrick (O-1.6)		FSC
RESL	Jessica Walston (v) (O-1.7)		Michelle Leonard (O-1.11)
SITL (t)	Eric Krausz (O-1.8)		FSC
GISS	Rose Beaton (v) (O-31)		Marcy Johnson (O-1.10)
GISS	Rueben Miller (v) (O-1.9)		EQRT
			Sharleen Puckett (O-1.17)
			PTRC(t)
			Walt Seidel (O-13)
8. COMMUNICATIONS			12. CONTACTS / OTHER INFORMATION
INCM	Jeff Smetzler (E-15.1)		NEWICC (509) 685-6900
RADO	John Nelson (E-15.3)		Spokane Valley Comms: 509-389-2002
COMT	Robert Leaming (E-15.2)		Spot Weather: 541-276-4493
COMT	Kevin Judd (O-32)		
Prepared by:			
Dusty Patrick PSC3			

118°35.5'W 118°35'W 118°34.5'W 118°34'W 118°33.5'W 118°33'W 118°32.5'W 118°32'W 118°31.5'W 118°31'W 118°30.5'W



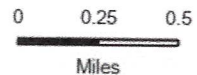
IAP

Goosmus

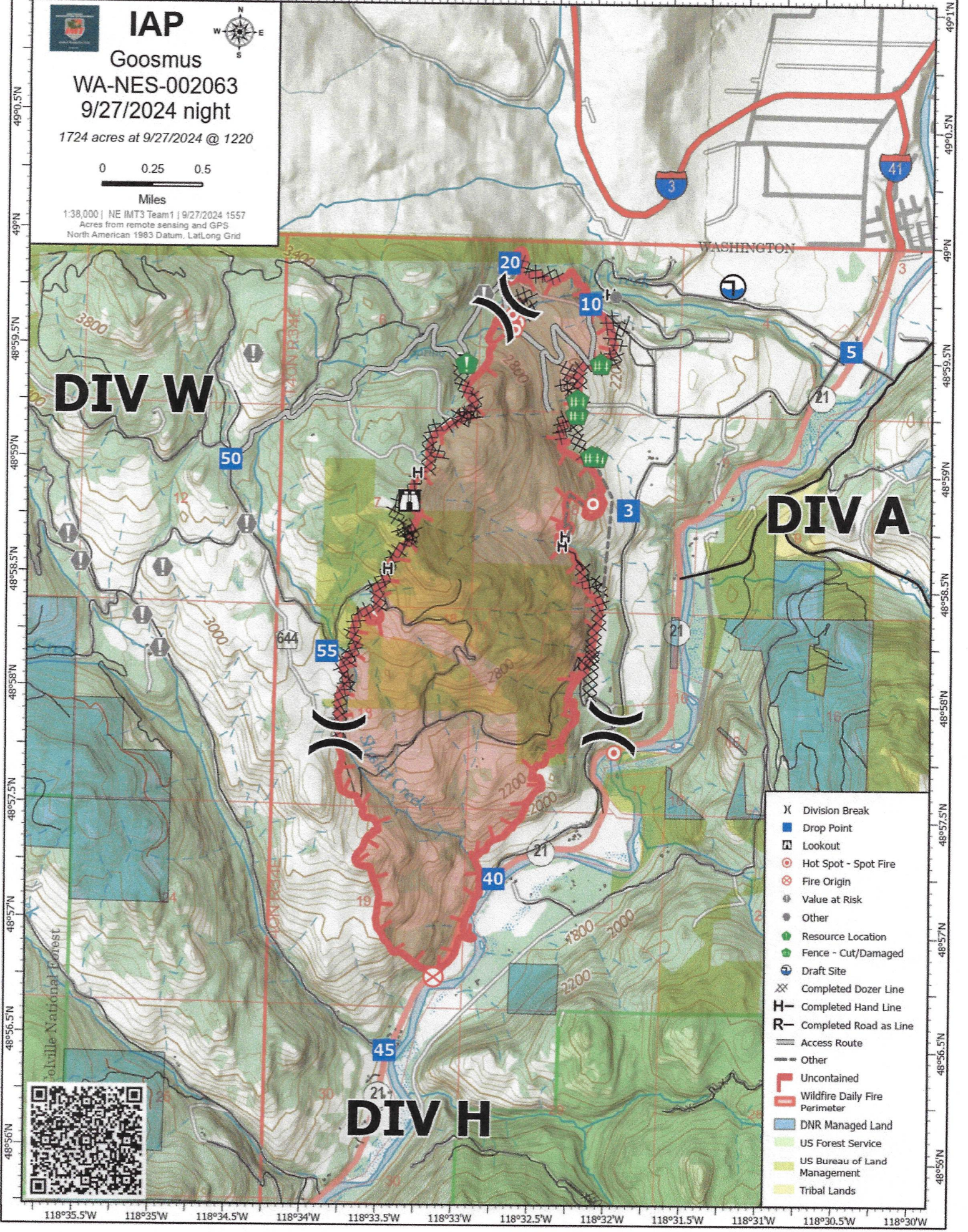
WA-NES-002063

9/27/2024 night

1724 acres at 9/27/2024 @ 1220



1:38,000 | NE IMT3 Team 1 | 9/27/2024 1557
Acres from remote sensing and GPS
North American 1983 Datum, Lat/Long Grid



DIV W

DIV A

DIV H

- X Division Break
- Drop Point
- Lookout
- ⊙ Hot Spot - Spot Fire
- ⊗ Fire Origin
- ⊙ Value at Risk
- Other
- Resource Location
- Fence - Cut/Damaged
- ⊙ Draft Site
- ⊗ Completed Dozer Line
- H Completed Hand Line
- R Completed Road as Line
- Access Route
- Other
- ⊕ Uncontained
- ⊕ Wildfire Daily Fire Perimeter
- DNR Managed Land
- US Forest Service
- US Bureau of Land Management
- Tribal Lands



118°35.5'W 118°35'W 118°34.5'W 118°34'W 118°33.5'W 118°33'W 118°32.5'W 118°32'W 118°31.5'W 118°31'W 118°30.5'W 118°30'W

WEATHER	1. Incident Name GOOSMUS FIRE	2. Date Prepared 9/27/2024	3. Time Prepared 1200
----------------	-----------------------------------------	--------------------------------------	---------------------------------

Forecast is based on forecast start time of 1130 PDT on September 27. If conditions become unrepresentative...contact the National Weather Service.

.DISCUSSION...


Mostly clear skies with diurnally driven winds tonight into Saturday. A cold will sweep across the Goosmus Fire Sunday morning. Winds will switch westerly overnight Saturday and will become gusty with frontal passage on Sunday. Cold front will be dry with only a small chance of 10-20 percent for showers possible. Sunday afternoon will be dry and breezy.

.TONIGHT...

*Sky/weather.....Mostly clear.
CWR.....0 percent.
LAL.....1.
Min temperature.....Around 41.
Max humidity.....67 percent.
Wind (20 ft).....South winds 5 to 8 mph in the evening
becoming downslope 1 to 4 mph after 2000 PDT.
Mixing height.....Decreasing to near surface after 2000 PDT.
Transport winds.....Southwest 7 to 10 mph in the evening shifting
west-northwest around 3 mph after 2000 PDT.
Haines Index.....4 Low.*

.SATURDAY...

*Sky/weather.....Partly sunny. Increasing cirrus clouds in the
afternoon.
CWR.....0 percent.
LAL.....1.
Max temperature.....Around 76.
Min humidity.....29 percent.
Wind (20 ft).....Downslope winds up to 3 mph in the morning
switching upslope or east 3 to 6 mph after
0900 PDT.
Mixing height.....Inversion lifting after 1300 PDT with a mixing
height of 4000 ft agl between 1600 and
1800 PDT.
Transport winds.....East around 3 mph in the morning shifting to
the south around 6 mph in the afternoon.
Haines Index.....4 Low.*

INCIDENT RADIO COMMUNICATIONS PLAN I-205				1. INCIDENT NAME		2. DATE/TIME PREPARED		3. OPERATIONAL PERIOD DATE/TIME			
				GOOSMIUS		09/27/2024 10:29		9/27/2024 2000-0600			
4. BASIC RADIO CHANNEL UTILIZATION											
Ch #	Function	Channel Name	Assignment	RX Freq	N/W	RX Tone/NAC	TX Freq	N/W	TX Tone/NAC	Mode Analog (A) Digital (D) Mixed (M)	Remarks
1	COMMAND	CMD 1	CMD	151.5125	N	186.2	158.4075	N	186.2	A	
2	COMMAND	CMD 2	CMD	154.5275	N	186.2	158.4000	N	186.2	A	PRIMARY COMMAND
3	COMMAND	REPUBLIC	CMD	159.3600	N	118.8	151.2350	N	118.8	A	NIGHT SHIFT COMMAND
4	COMMAND	FY14REPT	CMD	153.8450	N	91.5	158.8050	N	103.5	A	FERRY COUNTY DISPATCH
5	TAC	SILVER	TAC	163.8900	N	0.0	163.8900	N	0.0	A	DIVISION A
6	TAC	TAC 6	TAC	151.7600	N	186.2	151.7600	N	186.2	A	DIVISION H
7	TAC	TAC 7	TAC	151.6250	N	186.2	151.6250	N	186.2	A	DIVISION W
8	TAC	TAC 8	TAC	151.7000	N	186.2	151.7000	N	186.2	A	STRUCTURE
9	TAC	TAC 9	TAC	151.5050	N	186.2	151.5050	N	186.2	A	
10	TAC	REDNET	TAC	153.8300	N	0.0	153.8300	N	156.7	A	REDNET
11	TAC	VTAC 11	TAC	151.1375	N	0.0	151.1375	N	156.7	A	
12	TAC	VTAC 12	TAC	154.4525	N	0.0	154.4525	N	156.7	A	
13	TAC	OSSCR	TAC	156.1350	N	0.0	156.1350	N	203.5	A	MEDEVAC
14	A/G	A/G 1	A/G	167.8375	N	0.0	167.8375	N	156.7	A	A/G FIXED
15	A/G	A/G 2	A/G	169.1500	N	0.0	169.1500	N	203.5	A	A/G ROTOR
16	AIRGUARD	AIRGUARD	A/G	168.6250	N	0.0	168.6250	N	110.9	A	AIRGUARD
5. Special Instructions: CMD 1@ ICP AND CMD 2 ARE LINKED, VIA UHF. BATTERIES AVAILABLE AT COMMS TRAILER IN FIRE CAMP AT FAIRGROUNDS											
6. I-205 Prepared By: Communications Unit Leader							Name: JEFFREY SMETZLER		Signature: 		

Incident: GOOSMUS	Date: Friday Sept 27 th , 2024	Shift: Night
-----------------------------	-----------------------------------------------------	------------------------



SAFETY MESSAGE

SAFETY IS OUR FIRST PRIORITY

Fire fighter safety comes first on every fire, every time



Lookouts Communications Escape Routes Safety Zones

Make sure LCES is in place

Each firefighter must know the interconnection of LCES - lookouts, communications, escape routes, and safety zones. LCES should be established before fighting the fire: Select lookouts, set up a communications plan, choose escape routes, and select safety zones.

SAFETY THOUGHT

There is not one blade of grass, one tree, or one subdivision worth the life of a firefighter.

MAJOR HAZARDS AND RISKS

- | | |
|----------------------------------------------------------------------------------------------------------------------------------------------------------------------------------------------------------------------------------|---------------------------------------------------------------------------------------------------------------------------------------------------------------------------------------------------------------------------------------------------------------------------------------------------|
| <ul style="list-style-type: none"> ● Limited suppression resources ● Snags, steep slopes, rolling material ● Communications ● Country not seen in daylight | <ul style="list-style-type: none"> ● Inactive portion of the fire flaring up ● Long travel distances; narrow, windy canyon roads ● Watch for changing weather conditions ● Critters: livestock, not being able to see them! |
|----------------------------------------------------------------------------------------------------------------------------------------------------------------------------------------------------------------------------------|---------------------------------------------------------------------------------------------------------------------------------------------------------------------------------------------------------------------------------------------------------------------------------------------------|





WILDLAND/URBAN INTERFACE WATCHOUTS

The primary consideration is to first assure firefighter and public safety. It is a must to assess potential fire behavior, ingress/egress routes, nature of the threat, hazardous materials, and available water supplies before engaging in the protection of any structures. The first step in conducting a safe operation is to assess whether the firefighting operations can be conducted safely. Consider the "Wildland/Urban Interface Watchouts" in completing a risk analysis for the urban interface area to be protected.

1. **WOODEN CONSTRUCTION AND WOOD SHAKE ROOFS.**
2. **POOR ACCESS AND NARROW ONE WAY ROADS.** A rapidly spreading fire could trap apparatus and personnel before they can turn around or move away from the flames and smoke.
3. **INADEQUATE WATER SUPPLY.** Without a reserve supply of water, the fire can overtake an area before the fuels can be cleared away.
4. **NATURAL FUELS 30 FEET OR CLOSER TO STRUCTURES.** Remember structures on slopes require greater clearance. Propane and above ground fuel tanks that are next to wooden structures or close to vegetation
5. **EXTREME FIRE BEHAVIOR.** Situations involving crowning, large flame heights and erratic fire behavior can extend in an unpredictable manner beyond the control of any number of personnel.
6. **STRONG WINDS.** Strong winds of 25+ MPH: Winds increase the chance of spotting over the heads of firefighters and trapping them between both fire areas. Winds also cause greater preheating of fuels in the path of a fire front.
7. **EVACUATION OF PUBLIC (PANIC).** The need to evacuate the public, livestock, pets, and/or animals. This critical activity can pull personnel from the firefighting activity and can distract attention from fire behavior at a time when the greatest alertness is needed.
8. **STRUCTURES LOCATED IN CHIMNEYS, BOX CANYONS, OR ON STEEP SLOPES IN FLASHY FUELS.** Structures are located on canyon slopes or "chimneys" on slopes of 30% or more with continuous, flashy fuels. The resulting rate of spread of any fire in this terrain can quickly extend beyond control.
9. **BRIDGE LOAD LIMITS.** Observe bridge limits. Exceeding bridge limits could lead to bridge failure with a resultant blocking of ingress/egress routes that could result in the loss of an escape route or loss of equipment.
10. **POWER LINES AND POLES:** What is their location in relation to the structures that are being protected? Watch for both overhead and downed power lines.
11. **LOCAL CITIZENS ARE ATTEMPTING SUPPRESSION ACTIVITIES.** Lack of knowledge in fire suppression may lead to unsafe tactics.
12. **NIGHTTIME OPERATION.** Unfamiliar with area, road access and residences in the area.

	Safety Officer
	Jared Reber 09/27/2024

LEGEND

-  Porta-johns
-  Hand washing
-  Hydrant
-  Thru-Traffic Flow



Goosmus Fire LOGISTICS INFORMATION

ICP 0600-2200

FOOD Breakfast: 0530-0800
Dinner: 1800-2100
Food times may change. If you are going to be late returning to camp, please call the Logistics Chief phone or communications via radio.

SHOWERS Shower times will be 0500 to 1100; 1500-2300

- Please see the map for parking and other camp information. It can change daily.
- Please pay attention to the “Entrance/Exit” signage on our maps. This is to help facilitate the morning and evening rush.
- Tenders: Please fill up at the hydrants along Fairgrounds Road during non-rush hour times. Track your gallonage on your shift tickets please.
 - The 4th of July Creek Road fill site is active. It can be a tight turn but supplies about 1,000gpm. It is just west of the Danville Post Office and marked with blue ribbon. You do not need to keep track of these fills.
- On GMs please include contact name and phone number
 - Be detailed on what you want
 - Write very clearly
 - Go through your Div Sup and Ops
- *Please keep vehicle speeds down through fire camp and adjacent roads.*
- Lunches, water, and sports drinks will be available in the reefer.
- Ice will be available on in the reefer as well. (afternoon on the 27th).
- We will have a camp MEDL set up—They are operating at the ICP and have a med supply for bumps, cuts, and blisters (and other things). There is also a “sick area” set as well. If you are sick, please phone Mary Andersen at 509-680-2846. Do not come into the ICP feeling ill.

MEDICAL PLAN (ICS 206 WF)

Controlled Unclassified Information//Basic

Medical Incident Report

FOR A NON-EMERGENCY INCIDENT, WORK THROUGH CHAIN OF COMMAND TO REPORT AND TRANSPORT INJURED PERSONNEL AS NECESSARY.

FOR A MEDICAL EMERGENCY: IDENTIFY ON-SCENE INCIDENT COMMANDER BY NAME AND POSITION AND ANNOUNCE "MEDICAL EMERGENCY" TO INITIATE RESPONSE FROM IMT COMMUNICATIONS/DISPATCH.

Use the following items to communicate situation to communications/dispatch.

1. CONTACT COMMUNICATIONS / DISPATCH (Verify correct frequency prior to starting report)

Ex: "Communications, Div. Alpha. Stand-by for Emergency Traffic."

2. INCIDENT STATUS: Provide incident summary (including number of patients) and command structure.

Ex: "Communications, I have a Red priority patient, unconscious, struck by a falling tree. Requesting air ambulance to Forest Road 1 at (Lat./Long.) This will be the Trout Meadow Medical, IC is TFLD Jones. EMT Smith is providing medical care."

Severity of Emergency / Transport Priority	<input type="checkbox"/> RED / PRIORITY 1 Life or limb threatening injury or illness. Evacuation need is IMMEDIATE <i>Ex: Unconscious, difficulty breathing, bleeding severely, 2° - 3° burns more than 4 palm sizes, heat stroke, disoriented.</i> <input type="checkbox"/> YELLOW / PRIORITY 2 Serious Injury or illness. Evacuation may be DELAYED if necessary. <i>Ex: Significant trauma, unable to walk, 2° - 3° burns not more than 1-3 palm sizes.</i> <input type="checkbox"/> GREEN / PRIORITY 3 Minor Injury or illness. Non-Emergency transport <i>Ex: Sprains, strains, minor heat-related illness.</i>	
Nature of Injury or Illness & Mechanism of Injury		Brief Summary of Injury or Illness <i>(Ex: Unconscious, Struck by Falling Tree)</i>
Evacuation Request		Air Ambulance / Short Haul/Hoist Ground Ambulance / Other
Patient Location		Descriptive Location & Lat. / Long. (WGS84)
Incident Name		Geographic Name + Medical <i>(Ex: Trout Meadow Medical)</i>
On-Scene Incident Commander		Name of on-scene IC of Incident within an Incident <i>(Ex: TFLD Jones)</i>
Patient Care		Name of Care Provider <i>(Ex: EMT Smith)</i>

3. INITIAL PATIENT ASSESSMENT: Complete this section for each patient as applicable (start with the most severe patient)

Patient Assessment: See IRPG PAGE 106

Treatment:

4. EVACUATION PLAN:

Evacuation Location (if different): *(Descriptive Location (drop point, intersection, etc.) or Lat. / Long.)* Patient's ETA to Evacuation Location:

Helispot / Extraction Site Size and Hazards:

5. ADDITIONAL RESOURCES / EQUIPMENT NEEDS:

Example: Paramedic/EMT, crews, immobilization devices, AED, oxygen, trauma bag, IV/fluid(s), splints, rope rescue, wheeled litter, HAZMAT, extrication

6. COMMUNICATIONS: Identify State Air/Ground EMS Frequencies and Hospital Contacts as applicable

Function	Channel Name/Number	Receive (RX)	Tone/NAC *	Transmit (TX)	Tone/NAC *
COMMAND					
AIR-TO-GRND					
TACTICAL					

7. CONTINGENCY: Considerations: If primary options fall, what actions can be implemented in conjunction with primary evacuation method? Be thinking ahead..

8. ADDITIONAL INFORMATION: Updates/Changes, etc.

REMEMBER: Confirm ETAs of resources ordered. Act according to your level of training. Be Alert. Keep Calm. Think Clearly. Act Decisively.