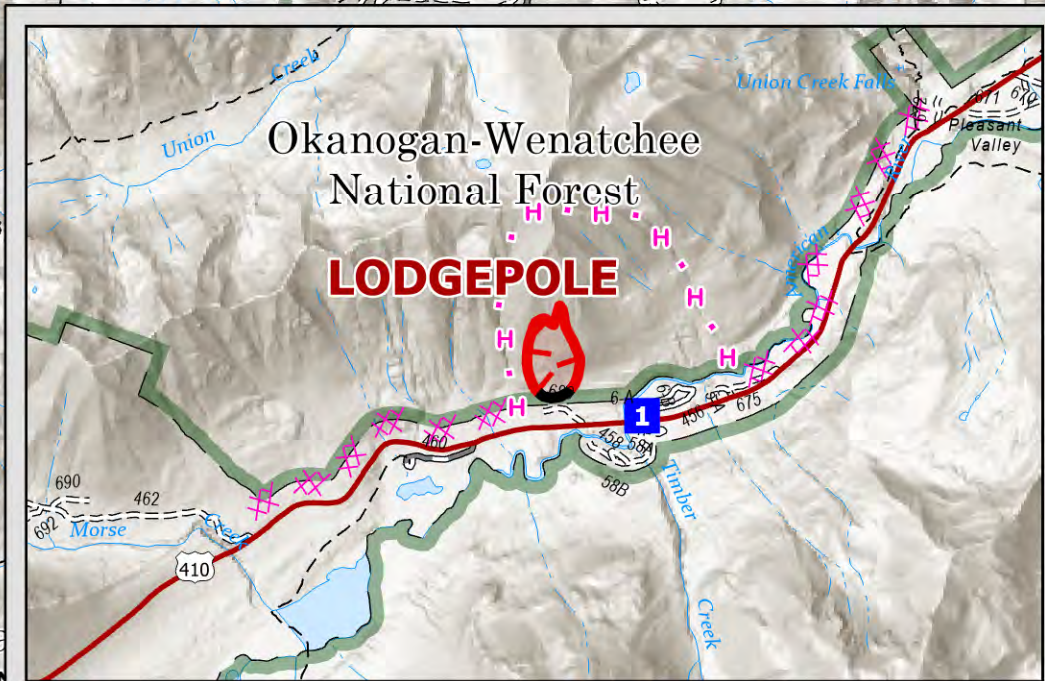


FC Point Type	Label	Elevation (Feet)	Latitude WGS84 DDM	Longitude WGS84 DDM	Comments
Drop Point	1		46° 54.918' N	121° 23.090' W	
Helibase	Jefferson		46° 54.735' N	121° 02.180' W	



- Helibase
- Wildfire Daily Fire Perimeter
- Ranger District Boundary
- Drop Point
- Administrative FS Boundary
- FS Wilderness Boundary

Datum: NAD 1983 UTM Zone 10N