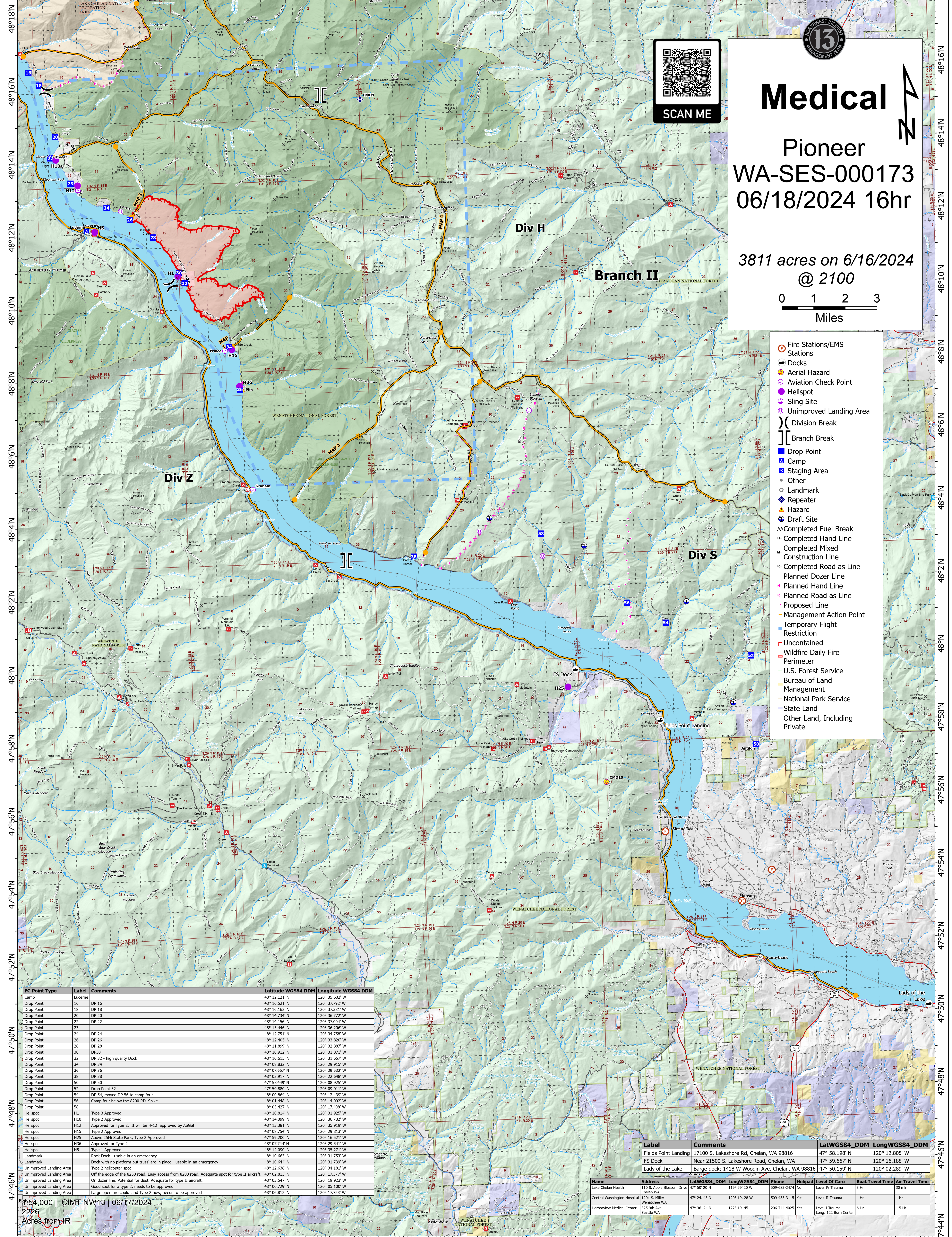



120°38'W 120°36'W 120°34'W 120°32'W 120°30'W 120°28'W 120°26'W 120°24'W 120°22'W 120°20'W 120°18'W 120°16'W 120°14'W 120°12'W 120°10'W 120°8'W 120°6'W 120°4'W 120°2'W





Medical

Pioneer

WA-SES-000173

06/18/2024 16hr

3811 acres on 6/16/2024
@ 2100

0 1 2 3
Miles

- Fire Stations/EMS Stations
- Docks
- Aerial Hazard
- Aviation Check Point
- Helispot
- Sling Site
- Unimproved Landing Area
- Division Break
- Branch Break
- Drop Point
- Camp
- Staging Area
- Landmark
- Repeater
- Hazard
- Draft Site
- Completed Fuel Break
- Completed Hand Line
- Completed Mixed Construction Line
- Completed Road as Line
- Planned Dozer Line
- Planned Hand Line
- Planned Road as Line
- Proposed Line
- Management Action Point
- Temporary Flight Restriction
- Uncontained
- Wildfire Daily Fire Perimeter
- U.S. Forest Service
- Bureau of Land Management
- National Park Service
- State Land
- Other Land, Including Private

FC Point Type	Label	Comments	Latitude WGS84 DDM	Longitude WGS84 DDM
Drop Point	16	Lucerne	48° 12.111' N	120° 32.792' W
Drop Point	18	DP 18	48° 16.162' N	120° 37.381' W
Drop Point	20	DP 20	48° 14.734' N	120° 36.772' W
Drop Point	22	DP 22	48° 14.156' N	120° 37.004' W
Drop Point	23		48° 13.446' N	120° 36.206' W
Drop Point	24	DP 24	48° 12.751' N	120° 34.758' W
Drop Point	26	DP 26	48° 12.405' N	120° 33.820' W
Drop Point	28	DP 28	48° 11.899' N	120° 32.887' W
Drop Point	30	DP 30	48° 10.912' N	120° 31.871' W
Drop Point	32	DP 32 - high quality Dock	48° 10.615' N	120° 31.657' W
Drop Point	34	DP 34	48° 08.832' N	120° 29.915' W
Drop Point	36	DP 36	48° 07.657' N	120° 29.532' W
Drop Point	38	DP 38	48° 06.287' N	120° 28.782' W
Drop Point	50	DP 50	47° 57.449' N	120° 08.925' W
Drop Point	52	Drop Point 52	47° 59.880' N	120° 09.011' W
Drop Point	54	DP 54, moved DP 56 to camp four.	48° 00.864' N	120° 12.439' W
Drop Point	56	Camp four below the 8200 RD. Spike.	48° 01.448' N	120° 14.002' W
Drop Point	58		48° 03.427' N	120° 17.408' W
Helispot	H1	Type 3 Approved	48° 10.814' N	120° 31.925' W
Helispot	H10	Type 2 Approved	48° 14.099' N	120° 31.732' W
Helispot	H12	Approved for Type 2. It will be H-12 approved by ASGS	48° 13.381' N	120° 35.919' W
Helispot	H15	Type 2 Approved	48° 08.754' N	120° 29.813' W
Helispot	H25	Above 25M State Park; Type 2 Approved	47° 59.200' N	120° 16.521' W
Helispot	H36	Approved for Type 2	48° 07.744' N	120° 29.541' W
Helispot	H5	Type 1 Approved	48° 10.090' N	120° 35.271' W
Landmark		Rock Dock - usable in an emergency.	48° 10.663' N	120° 31.752' W
Landmark		Dock with no platform but truss' are in place - usable in an emergency.	48° 10.644' N	120° 31.732' W
Unimproved Landing Area		Type 2 helicopter spot	48° 12.638' N	120° 34.181' W
Unimproved Landing Area		Off the edge of the 8250 road. Easy access from 8200 road. Adequate spot for type II aircraft.	48° 02.813' N	120° 17.377' W
Unimproved Landing Area		On dozer line. Potential for dust. Adequate for type II aircraft.	48° 03.547' N	120° 19.923' W
Unimproved Landing Area		Good spot for a type 2, needs to be approved	48° 00.729' N	120° 05.100' W
Unimproved Landing Area		Large open area could land Type 2 now, needs to be approved	48° 06.812' N	120° 17.723' W

Label	Comments	LatWGS84 DDM	LongWGS84 DDM
Fields Point Landing	17100 S. Lakeshore Rd, Chelan, WA 98816	47° 58.198' N	120° 12.805' W
FS Dock	Near 21500 S. Lakeshore Road, Chelan, WA	47° 59.667' N	120° 16.188' W
Lady of the Lake	Barge dock; 1418 W Woodin Ave, Chelan, WA 98816	47° 50.159' N	120° 02.289' W

Name	Address	LatWGS84 DDM	LongWGS84 DDM	Phone	Helipad	Level Of Care	Boat Travel Time	Air Travel Time
Lake Chelan Health	110 S. Apple Blossom Drive Chelan WA	47° 50' 20" N	119° 59' 20" W	509-683-2474	No	Level IV Trauma	3 Hr	30 min
Central Washington Hospital	1201 S. Miller Wenatchee WA	47° 24.43' N	120° 19.28' W	509-433-3115	Yes	Level II Trauma	4 Hr	1 Hr
Harborview Medical Center	325 9th Ave Seattle WA	47° 36.24' N	122° 19.45' W	206-744-4025	Yes	Level I Trauma	6 Hr	1.5 Hr

154,000 | CIMT NW13 | 06/17/2024
2226
Acres from IR

120°38'W 120°36'W 120°34'W 120°32'W 120°30'W 120°28'W 120°26'W 120°24'W 120°22'W 120°20'W 120°18'W 120°16'W 120°14'W 120°12'W 120°10'W 120°8'W 120°6'W 120°4'W