

120°30'W 120°20'W 120°10'W 120°W

48°20'N

48°10'N

48°N

47°50'N



Information

Pioneer
WA-SES-000173
06/18/2024 16hr

3811 acres on 6/16/2024 @ 2100

0 1.75 3.5 7

Miles

Wildfire Daily Fire Perimeter

Evacuation Areas

Level 1

Level 2

Level 3

USFS Forest Closure

Forest Closure Point

Forest Closure Line

Forest Closure Polygon

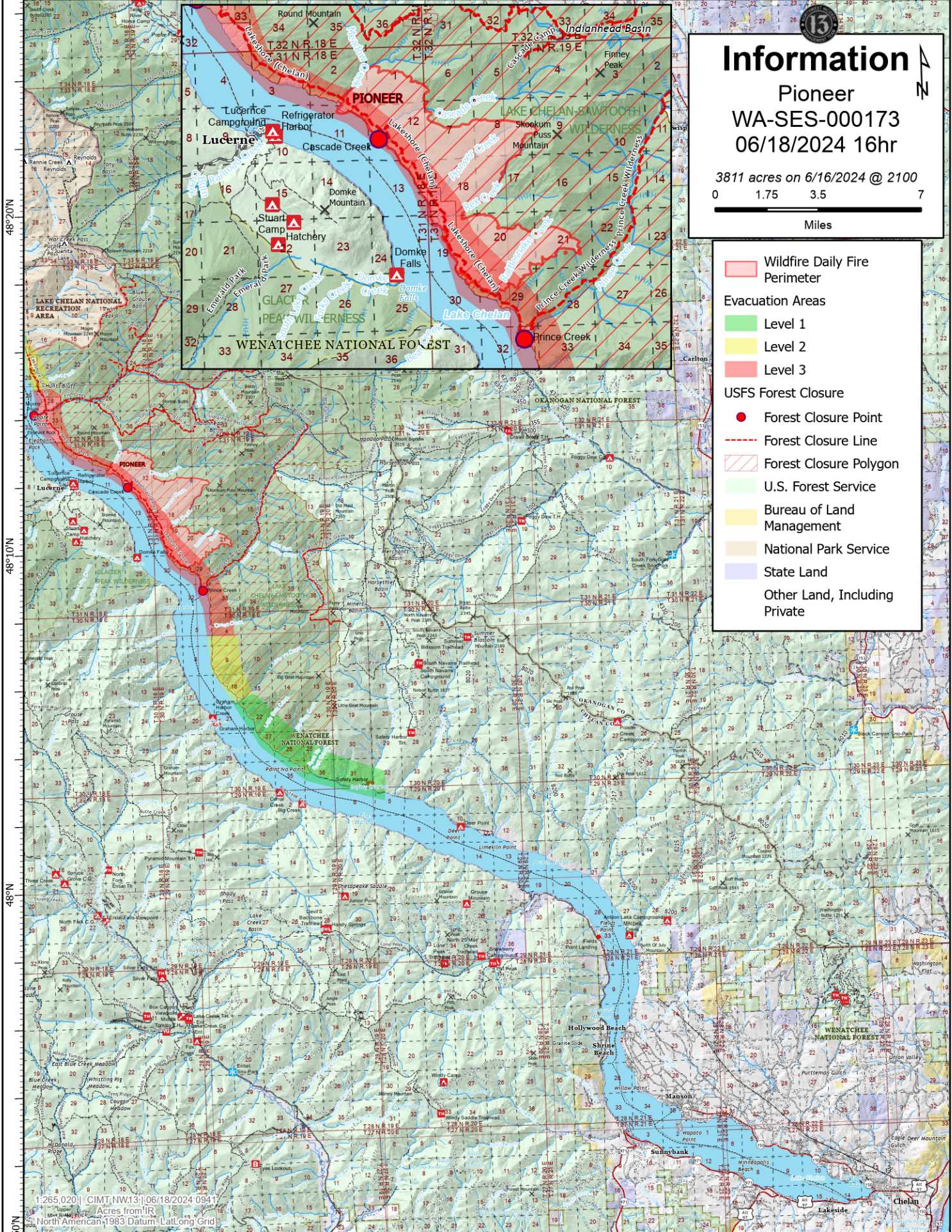
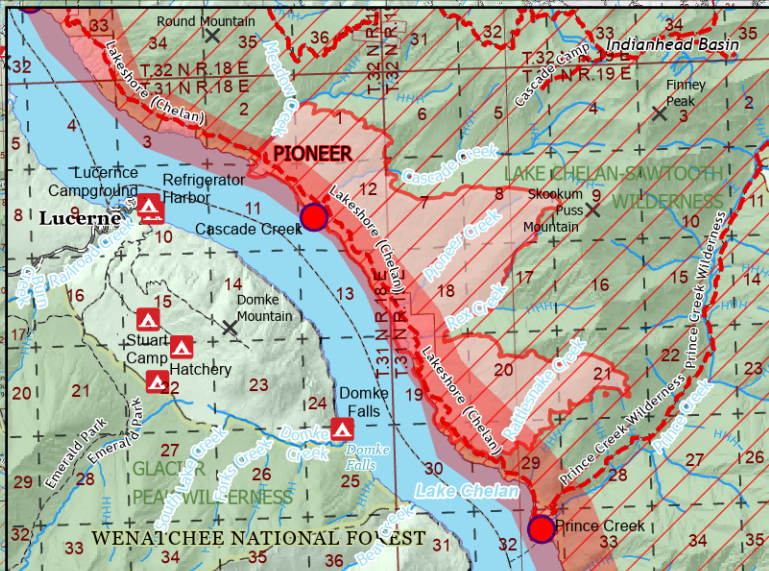
U.S. Forest Service

Bureau of Land Management

National Park Service

State Land

Other Land, Including Private



1:265,020 | CIMT.NW.13 | 06/18/2024 09:11
Acres from IIR
North American 1983 Datum, Lat/Long Grid