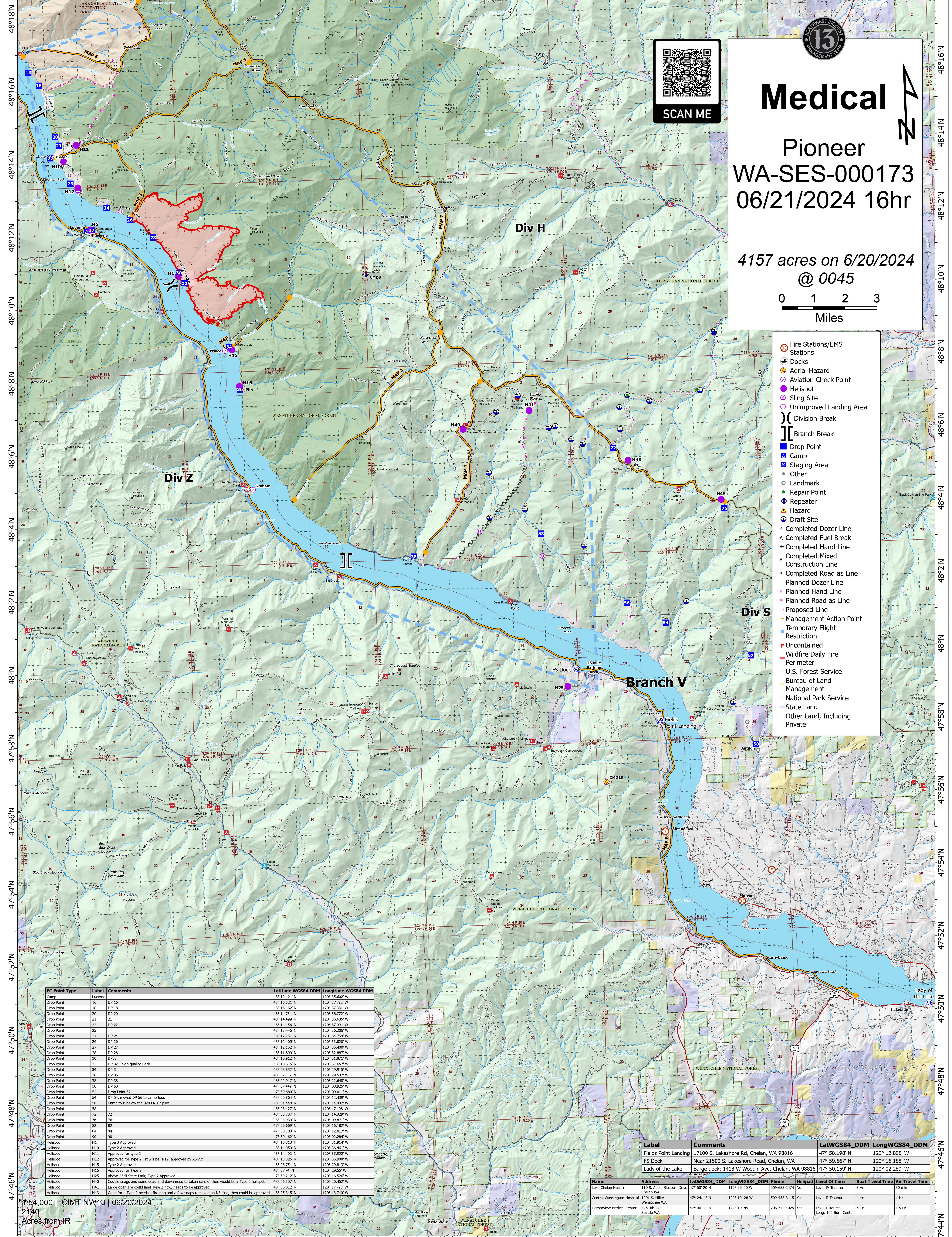


120°38'W 120°36'W 120°34'W 120°32'W 120°30'W 120°28'W 120°26'W 120°24'W 120°22'W 120°20'W 120°18'W 120°16'W 120°14'W 120°12'W 120°10'W 120°8'W 120°6'W 120°4'W 120°2'W



Medical

Pioneer
WA-SES-000173
06/21/2024 16hr

4157 acres on 6/20/2024
@ 0045

0 1 2 3
Miles

- Fire Stations/EMS Stations
- Docks
- Aerial Hazard
- Aviation Check Point
- Helispot
- Sling Site
- Unimproved Landing Area
- Division Break
- Branch Break
- Drop Point
- Camp
- Staging Area
- Other
- Landmark
- Repair Point
- Repeater
- Hazard
- Draft Site
- Completed Dozer Line
- Completed Fuel Break
- Completed Hand Line
- Completed Mixed Construction Line
- Completed Road as Line
- Planned Dozer Line
- Planned Hand Line
- Planned Road as Line
- Proposed Line
- Management Action Point
- Temporary Flight Restriction
- Uncontained Wildfire Daily Fire Perimeter
- U.S. Forest Service
- Bureau of Land Management
- National Park Service
- State Land
- Other Land, Including Private

FC Point Type	Label	Comments	Latitude WGS84 DDM	Longitude WGS84 DDM
Camp	16	DP 16	48° 16.521' N	120° 37.792' W
Drop Point	18	DP 18	48° 16.162' N	120° 37.381' W
Drop Point	20	DP 20	48° 14.734' N	120° 36.772' W
Drop Point	21	21	48° 14.459' N	120° 36.633' W
Drop Point	22	DP 22	48° 14.156' N	120° 37.004' W
Drop Point	23	DP 23	48° 13.446' N	120° 36.206' W
Drop Point	24	DP 24	48° 12.751' N	120° 34.758' W
Drop Point	26	DP 26	48° 12.405' N	120° 33.820' W
Drop Point	27	DP 27	48° 12.152' N	120° 33.400' W
Drop Point	28	DP 28	48° 11.899' N	120° 32.987' W
Drop Point	30	DP 30	48° 10.912' N	120° 31.871' W
Drop Point	32	DP 32 - high quality Dock	48° 10.615' N	120° 31.657' W
Drop Point	34	DP 34	48° 08.832' N	120° 29.915' W
Drop Point	36	DP 36	48° 07.657' N	120° 28.532' W
Drop Point	38	DP 38	48° 02.917' N	120° 22.648' W
Drop Point	50	DP 50	47° 57.449' N	120° 08.925' W
Drop Point	52	Drop Point 52	47° 59.880' N	120° 09.011' W
Drop Point	54	DP 54, moved DP 56 to camp four	48° 03.664' N	120° 16.526' W
Drop Point	56	Camp four below the 8200 RD. Spike.	48° 01.448' N	120° 14.002' W
Drop Point	58		48° 03.427' N	120° 17.408' W
Drop Point	72	72	48° 05.707' N	120° 14.329' W
Drop Point	76	76	48° 03.939' N	120° 09.871' W
Drop Point	82	82	47° 59.669' N	120° 12.439' W
Drop Point	84	84	47° 58.183' N	120° 12.817' W
Drop Point	90	90	47° 50.162' N	120° 02.284' W
Helispot	H1	Type 3 Approved	48° 10.813' N	120° 31.914' W
Helispot	H10	Type 2 Approved	48° 14.659' N	120° 36.601' W
Helispot	H11	Approved for type 2	48° 14.492' N	120° 35.922' W
Helispot	H12	Approved for Type 2. It will be H-12 approved by ASGS	48° 13.325' N	120° 35.908' W
Helispot	H15	Type 2 Approved	48° 08.754' N	120° 29.813' W
Helispot	H16	Approved for Type 2	48° 07.74' N	120° 29.25' W
Helispot	H25	Above 20M State Park; Type 2 Approved	48° 05.664' N	120° 16.526' W
Helispot	H40	Couple snags and some dead and down need to taken care of then would be a Type 2 helispot	48° 06.357' N	120° 20.452' W
Helispot	H41	Large open area could land Type 2 now, needs to be approved	48° 08.812' N	120° 17.723' W
Helispot	H43	Good for a Type 2 needs a fire ring and a few snags removed on NE side, then could be approved.	48° 05.345' N	120° 13.740' W

Label	Comments	LatWGS84 DDM	LongWGS84 DDM
Fields Point Landing	17100 S. Lakeshore Rd, Chelan, WA 98816	47° 58.198' N	120° 12.805' W
FS Dock	Near 21500 S. Lakeshore Road, Chelan, WA	47° 59.667' N	120° 16.188' W
Lady of the Lake	Barge dock; 1418 W Woodin Ave, Chelan, WA 98816	47° 50.159' N	120° 02.289' W

Name	Address	LatWGS84 DDM	LongWGS84 DDM	Phone	Helipad	Level Of Care	Boat Travel Time	Air Travel Time
Lake Chelan Health	110 S. Apple Blossom Drive Chelan, WA	47° 50' 20" N	119° 59' 20" W	509-683-2474	No	Level IV Trauma	3 Hr	30 min
Central Washington Hospital	1201 S. Miller Wenatchee, WA	47° 24. 43 N	120° 19. 28 W	509-433-3115	Yes	Level II Trauma	4 Hr	1 Hr
Harborview Medical Center	325 9th Ave Seattle, WA	47° 36. 24 N	122° 19. 45 W	206-744-4025	Yes	Level I Trauma Long: 123 Burr Center	6 Hr	1.5 Hr

1:54,000 | CIMT NW13 | 06/20/2024
2140
Acres from IR

120°38'W 120°36'W 120°34'W 120°32'W 120°30'W 120°28'W 120°26'W 120°24'W 120°22'W 120°20'W 120°18'W 120°16'W 120°14'W 120°12'W 120°10'W 120°8'W 120°6'W 120°4'W