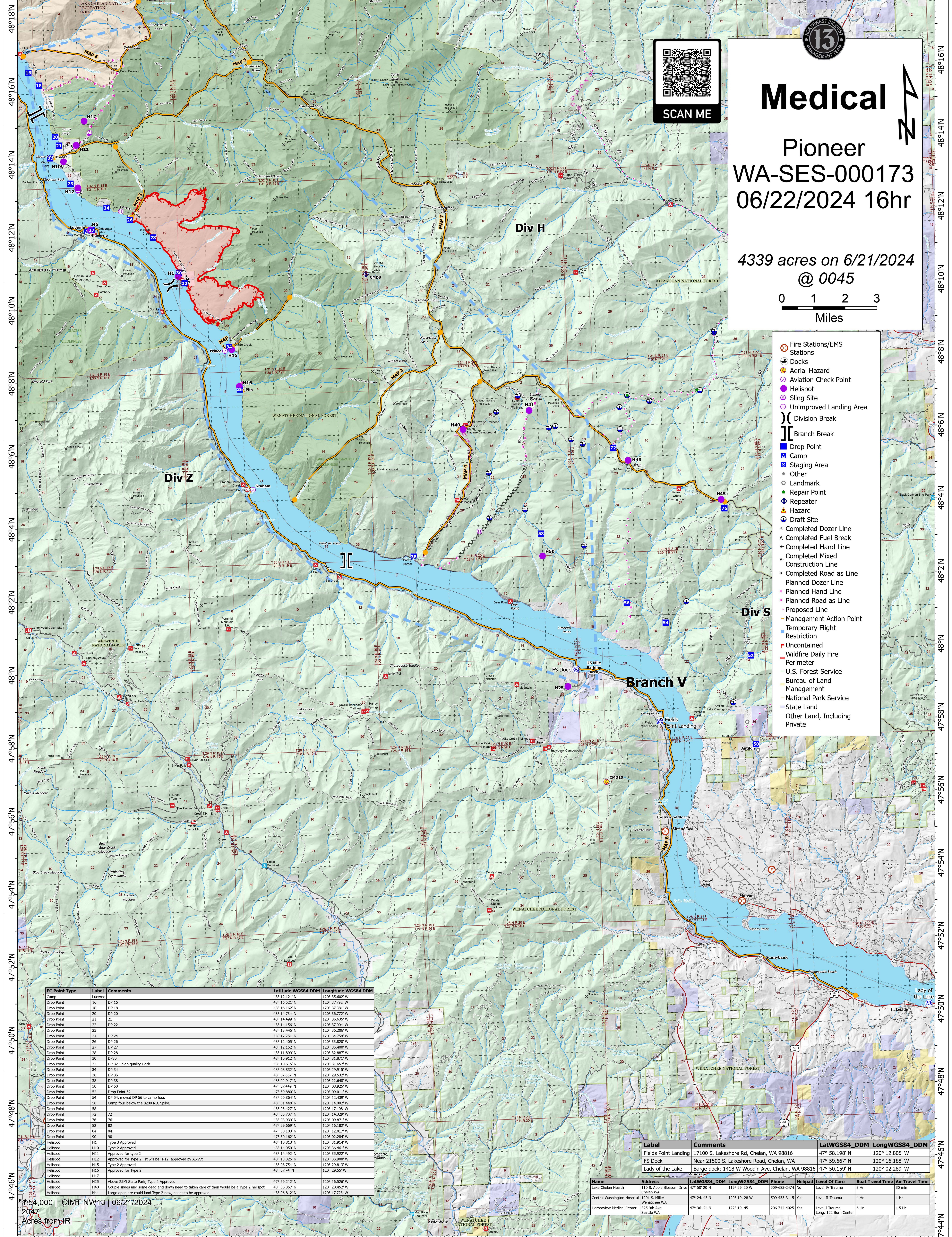



120°38'W 120°36'W 120°34'W 120°32'W 120°30'W 120°28'W 120°26'W 120°24'W 120°22'W 120°20'W 120°18'W 120°16'W 120°14'W 120°12'W 120°10'W 120°8'W 120°6'W 120°4'W 120°2'W





Medical

Pioneer

WA-SES-000173

06/22/2024 16hr

4339 acres on 6/21/2024
@ 0045

0

1

2

3

Miles

- Fire Stations/EMS Stations
- Docks
- Aerial Hazard
- Aviation Check Point
- Helispot
- Sling Site
- Unimproved Landing Area
- } Division Break
- } Branch Break
- Drop Point
- ▲ Camp
- Staging Area
- Other
- Landmark
- Repair Point
- ▲ Repeater
- ▲ Hazard
- Draft Site
- Completed Dozer Line
- ▲ Completed Fuel Break
- Completed Hand Line
- Completed Mixed Construction Line
- Completed Road as Line
- Planned Dozer Line
- Planned Hand Line
- Planned Road as Line
- Proposed Line
- Management Action Point
- Temporary Flight Restriction
- Uncontained Wildfire Daily Fire Perimeter
- U.S. Forest Service Bureau of Land Management National Park Service State Land Other Land, Including Private

FC Point Type	Label	Comments	Latitude WGS84 DDM	Longitude WGS84 DDM
Camp	16	DP 16	48° 16.521' N	120° 37.792' W
Drop Point	18	DP 18	48° 16.162' N	120° 37.381' W
Drop Point	20	DP 20	48° 14.734' N	120° 36.772' W
Drop Point	21	DP 21	48° 14.459' N	120° 36.633' W
Drop Point	22	DP 22	48° 14.156' N	120° 37.004' W
Drop Point	23	DP 23	48° 13.446' N	120° 36.206' W
Drop Point	24	DP 24	48° 12.751' N	120° 34.758' W
Drop Point	26	DP 26	48° 12.405' N	120° 33.820' W
Drop Point	27	DP 27	48° 12.152' N	120° 35.000' W
Drop Point	28	DP 28	48° 11.899' N	120° 32.867' W
Drop Point	30	DP 30	48° 10.912' N	120° 31.871' W
Drop Point	32	DP 32 - high quality Dock	48° 10.615' N	120° 31.657' W
Drop Point	34	DP 34	48° 08.832' N	120° 29.915' W
Drop Point	36	DP 36	48° 07.657' N	120° 28.532' W
Drop Point	38	DP 38	48° 02.917' N	120° 22.648' W
Drop Point	50	DP 50	47° 57.449' N	120° 08.925' W
Drop Point	52	Drop Point 52	47° 59.880' N	120° 09.011' W
Drop Point	54	DP 54, moved DP 56 to camp four	48° 03.644' N	120° 12.439' W
Drop Point	56	Camp four below the 8200 RD. Spike.	48° 01.448' N	120° 14.002' W
Drop Point	58		48° 03.427' N	120° 17.408' W
Drop Point	72	72	48° 05.707' N	120° 14.329' W
Drop Point	76	76	48° 03.939' N	120° 09.871' W
Drop Point	82	82	47° 59.669' N	120° 16.182' W
Drop Point	84	84	47° 58.183' N	120° 12.817' W
Drop Point	90	90	47° 50.162' N	120° 02.284' W
Helispot	H1	Type 3 Approved	48° 10.813' N	120° 31.914' W
Helispot	H10	Type 2 Approved	48° 14.659' N	120° 36.601' W
Helispot	H11	Approved for type 2	48° 14.492' N	120° 35.922' W
Helispot	H12	Approved for Type 2. It will be H-12 approved by ASGS	48° 13.325' N	120° 35.908' W
Helispot	H15	Type 2 Approved	48° 08.754' N	120° 29.813' W
Helispot	H16	Approved for Type 2	48° 07.74' N	120° 29.35' W
Helispot	H25	Above 25M State Park; Type 2 Approved	47° 59.212' N	120° 16.526' W
Helispot	H40	Couple snags and some dead and down need to taken care of then would be a Type 2 helispot	48° 06.357' N	120° 20.452' W
Helispot	H41	Large open area could land Type 2 now, needs to be approved	48° 06.812' N	120° 17.723' W

Label	Comments	LatWGS84 DDM	LongWGS84 DDM
Fields Point Landing	17100 S. Lakeshore Rd, Chelan, WA 98816	47° 58.198' N	120° 12.805' W
FS Dock	Near 21500 S. Lakeshore Road, Chelan, WA	47° 59.667' N	120° 16.188' W
Lady of the Lake	Barge dock; 1418 W Woodin Ave, Chelan, WA 98816	47° 50.159' N	120° 02.289' W

Name	Address	LatWGS84 DDM	LongWGS84 DDM	Phone	Helipad	Level Of Care	Boat Travel Time	Air Travel Time
Lake Chelan Health	110 S. Apple Blossom Drive Chelan, WA	47° 50' 20" N	119° 59' 20" W	509-683-2474	No	Level IV Trauma	3 Hr	30 min
Central Washington Hospital	1201 S. Miller Wenatchee, WA	47° 24. 43 N	120° 19. 28 W	509-433-3115	Yes	Level II Trauma	4 Hr	1 Hr
Harborview Medical Center	325 9th Ave Seattle, WA	47° 36. 24 N	122° 19. 45 W	206-744-4025	Yes	Level I Trauma Long: 122 Burn Center	6 Hr	1.5 Hr

11°54.000 | CIMT NW13 | 06/21/2024
2047
Acres from IR

120°38'W 120°36'W 120°34'W 120°32'W 120°30'W 120°28'W 120°26'W 120°24'W 120°22'W 120°20'W 120°18'W 120°16'W 120°14'W 120°12'W 120°10'W 120°8'W 120°6'W 120°4'W 120°2'W