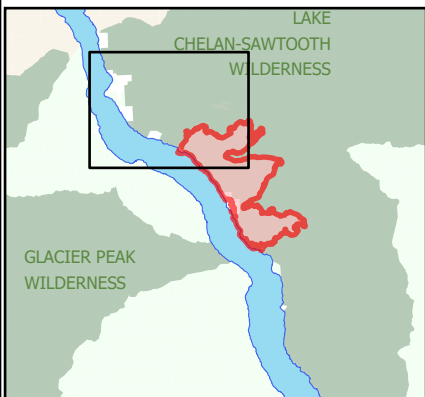
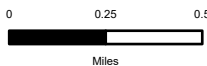
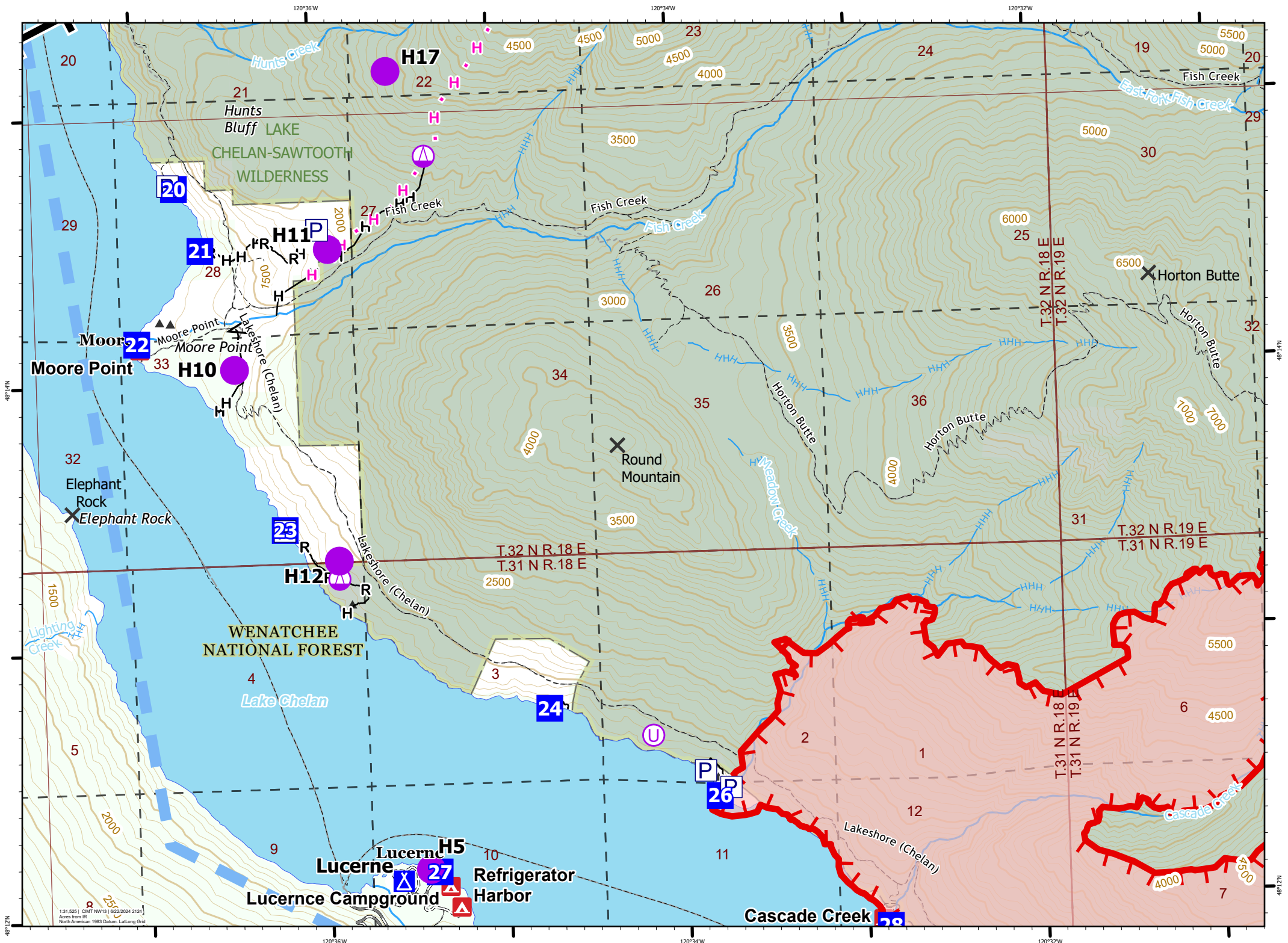




DP 20 - DP 26  
 Pioneer  
 WA-SES-000173  
 06/23/2024 16hr  
 4497 acres on 6/22/2024 @ 0115

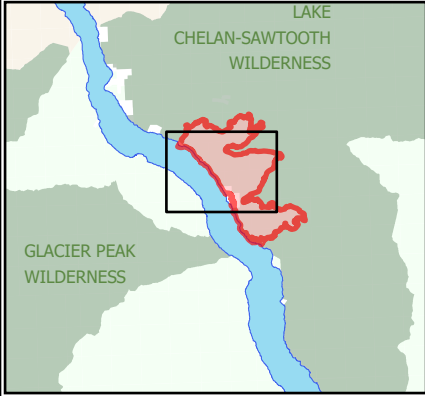
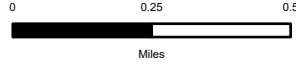


- Pump
- Helispot
- Sling Site
- Unimproved Landing Area
- Branch Break
- Drop Point
- Camp
- Completed Fuel Break
- Completed Hand Line
- Completed Road as Line
- Planned Hand Line
- Temporary Flight Restriction
- Uncontained
- Wildfire Daily Fire Perimeter
- U.S. Forest Service
- Other Land, Including Private

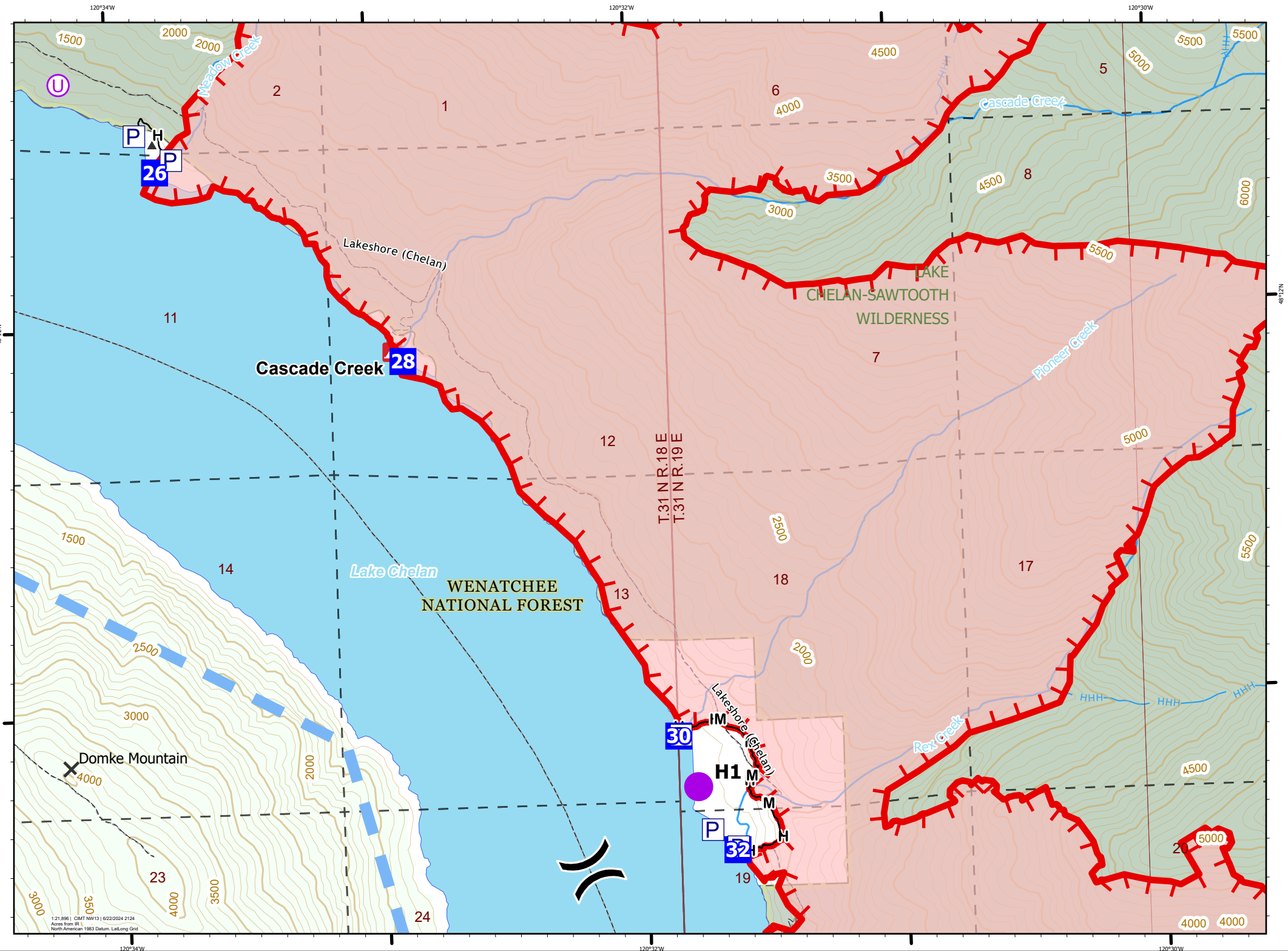




DP 26 - DP 30  
 Pioneer  
 WA-SES-000173  
 06/23/2024 16hr  
 4497 acres on 6/22/2024 @ 0115



- Pump
- Helispot
- Unimproved Landing Area
- Division Break
- Drop Point
- Completed Hand Line
- Completed Mixed Construction Line
- Temporary Flight Restriction
- Uncontained
- Wildfire Daily Fire Perimeter
- U.S. Forest Service
- Other Land, Including Private

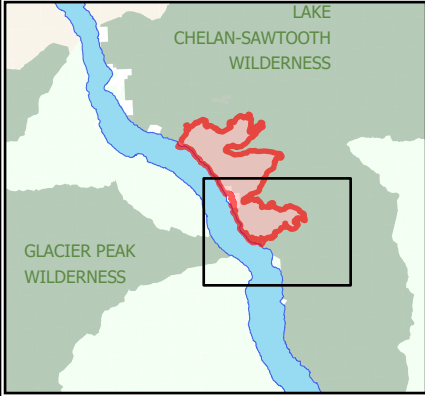
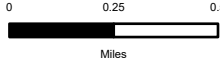


1:21,896 | CIMT NW13 | 6/22/2024 2:34  
 Acres from IR |  
 North American 1983 Datum, LattLong Grid

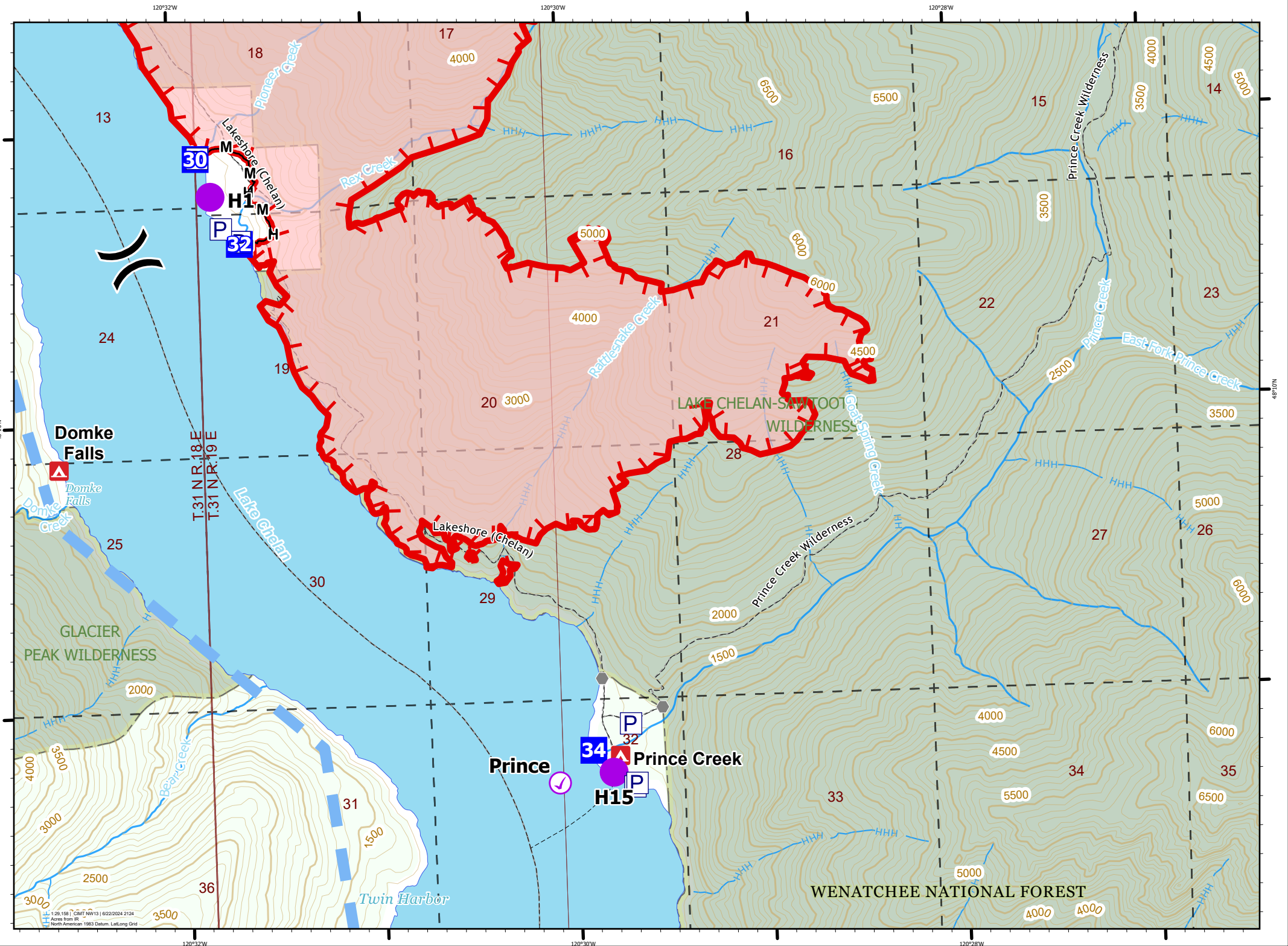




DP 30 - DP 34  
 Pioneer  
 WA-SES-000173  
 06/23/2024 16hr  
 4497 acres on 6/22/2024 @ 0115

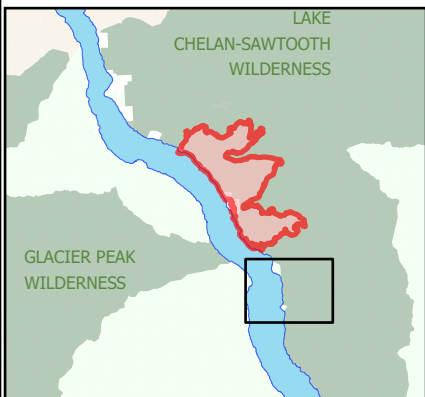
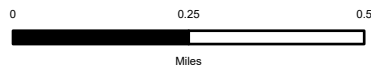


- Pump
- Aviation Check Point
- Helispot
- Division Break
- Drop Point
- Other
- Completed Hand Line
- Completed Mixed Construction Line
- Temporary Flight Restriction
- Uncontained
- Wildfire Daily Fire Perimeter
- U.S. Forest Service
- Other Land, Including Private

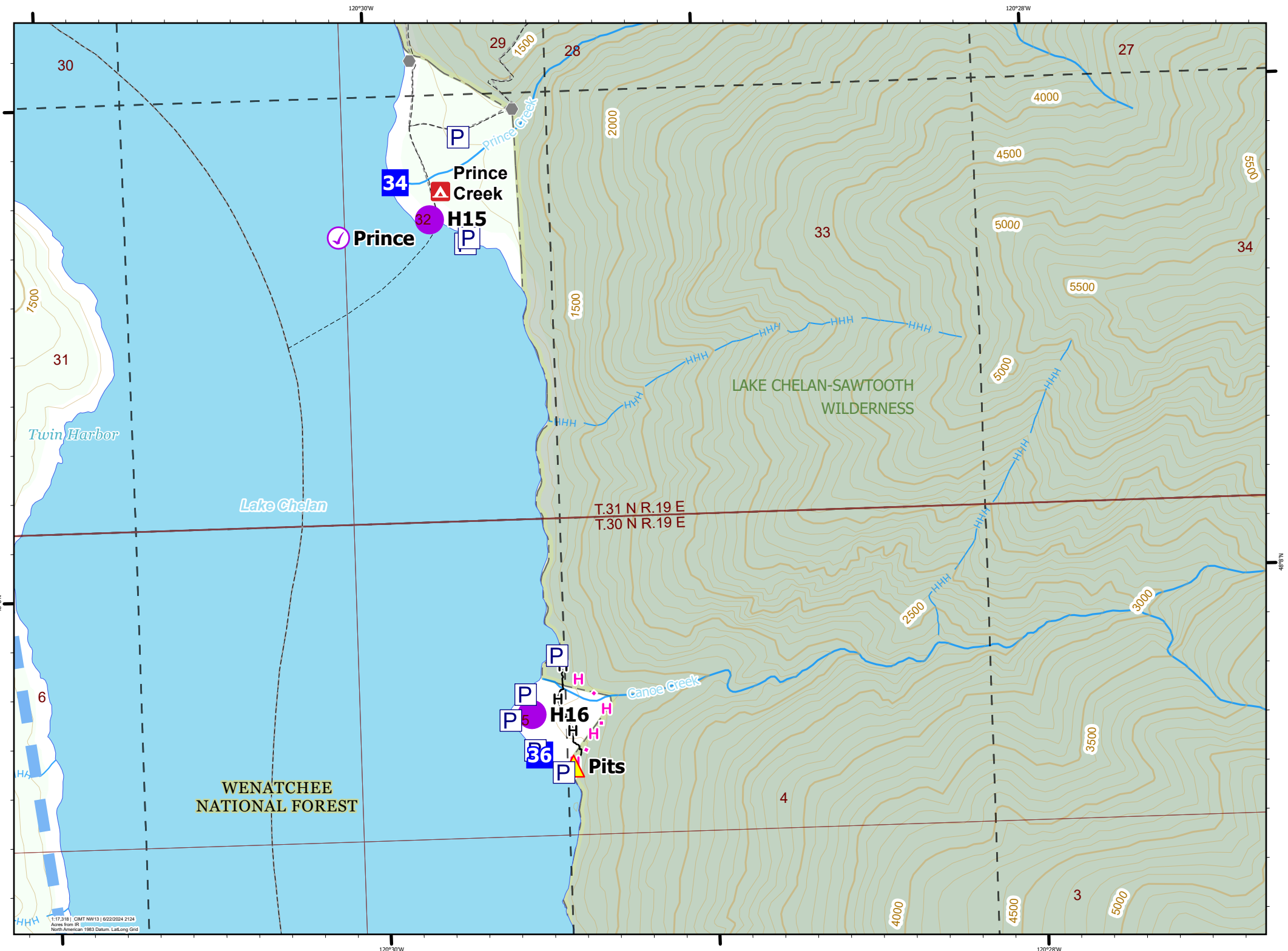




DP 34 - DP 36  
 Pioneer  
 WA-SES-000173  
 06/23/2024 16hr  
 4497 acres on 6/22/2024 @ 0115



- Pump
- Aviation Check Point
- Helispot
- Drop Point
- Other
- Hazard
- Completed Hand Line
- Planned Hand Line
- Temporary Flight Restriction
- U.S. Forest Service
- Other Land, Including Private



1:17,318 | GIMT NW13 | 6/22/2024 2:24  
 Acres from IR  
 North American 1983 Datum, Lat/Long Grid