

Ops TFR

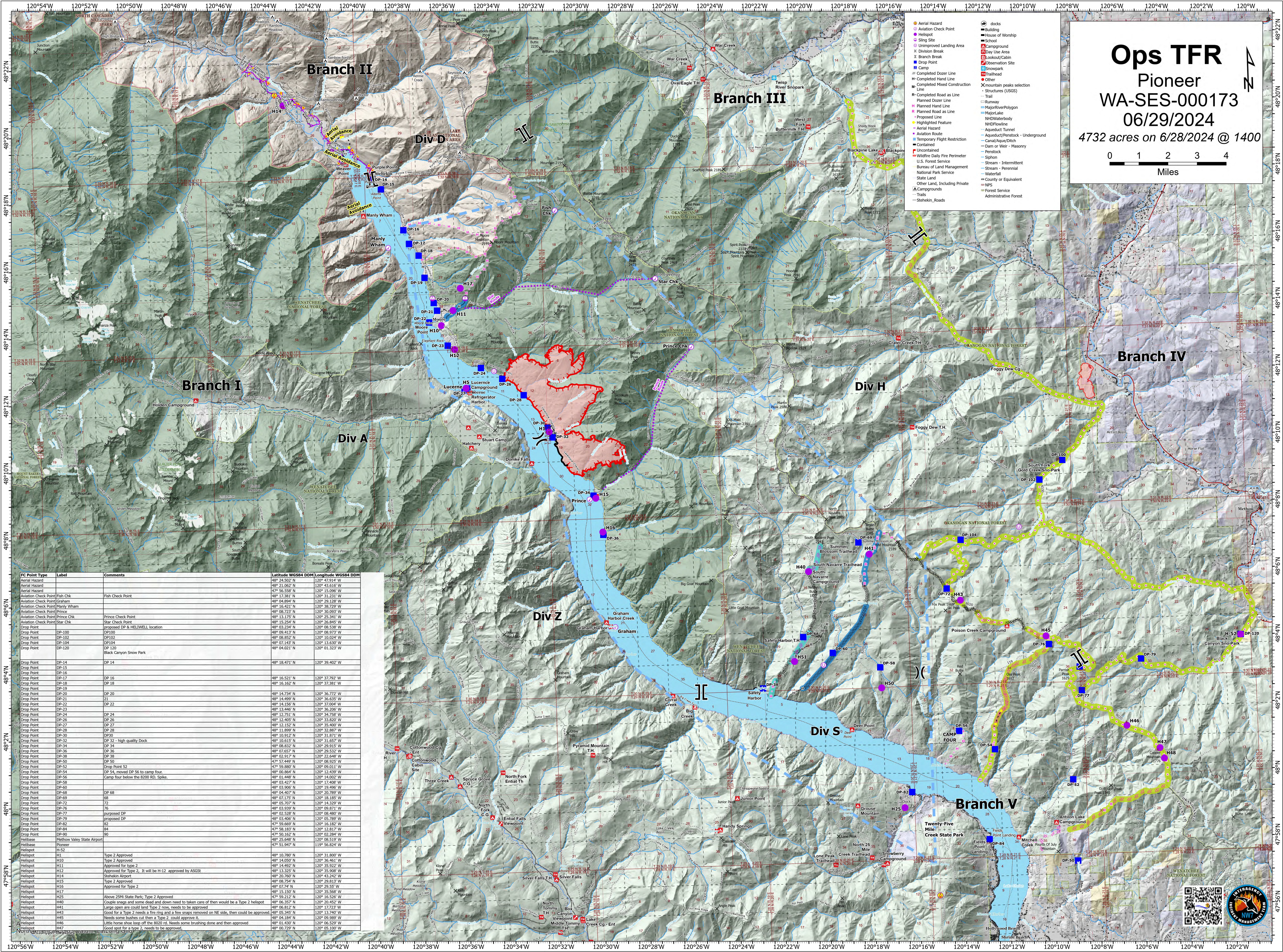
Pioneer

WA-SES-000173

06/29/2024

4732 acres on 6/28/2024 @ 1400

Miles



FC Point Type	Label	Comments	Latitude WGS84 DDM	Longitude WGS84 DDM
Aerial Hazard			48° 24.502' N	120° 27.914' W
Aerial Hazard			48° 21.002' N	120° 43.616' W
Aerial Hazard			47° 56.558' N	120° 15.096' W
Aviation Check Point	Fish Chk	Fish Check Point	48° 17.381' N	120° 31.231' W
Aviation Check Point	Graham		48° 08.894' N	120° 29.128' W
Aviation Check Point	Manly Wham		48° 18.421' N	120° 38.729' W
Aviation Check Point	Prince		48° 08.723' N	120° 30.093' W
Aviation Check Point	Prince Chk	Prince Check Point	48° 13.173' N	120° 25.341' W
Aviation Check Point	Star Chk	Star Check Point	48° 15.254' N	120° 26.845' W
Drop Point	DP-100	proposed DP & HELIWEIL location	48° 03.234' N	120° 08.538' W
Drop Point	DP100		48° 06.413' N	120° 06.515' W
Drop Point	DP102		48° 08.852' N	120° 10.024' W
Drop Point	DP104		48° 07.143' N	120° 13.630' W
Drop Point	DP-120	DP-120 Black Canyon Snow Park	48° 04.021' N	120° 01.323' W
Drop Point	DP-14	DP 14	48° 18.471' N	120° 39.402' W
Drop Point	DP-15			
Drop Point	DP-16			
Drop Point	DP-17			
Drop Point	DP-18			
Drop Point	DP-19			
Drop Point	DP-20			
Drop Point	DP-21			
Drop Point	DP-22			
Drop Point	DP-23			
Drop Point	DP-24			
Drop Point	DP-26			
Drop Point	DP-27			
Drop Point	DP-28			
Drop Point	DP-30			
Drop Point	DP-32			
Drop Point	DP-34			
Drop Point	DP-36			
Drop Point	DP-38			
Drop Point	DP-50			
Drop Point	DP-52			
Drop Point	DP-54			
Drop Point	DP-56			
Drop Point	DP-58			
Drop Point	DP-60			
Drop Point	DP-62			
Drop Point	DP-64			
Drop Point	DP-66			
Drop Point	DP-68			
Drop Point	DP-70			
Drop Point	DP-72			
Drop Point	DP-74			
Drop Point	DP-76			
Drop Point	DP-78			
Drop Point	DP-80			
Drop Point	DP-82			
Drop Point	DP-84			
Drop Point	DP-86			
Drop Point	DP-88			
Drop Point	DP-90			
Helibase	Madhoo Valley State Airport		47° 50.162' N	120° 26.294' W
Helibase			48° 25.648' N	120° 09.906' W
Helibase			47° 51.947' N	119° 56.824' W
Helispot	H-52	Type 2 Approved	48° 10.789' N	120° 31.800' W
Helispot	H10	Type 2 Approved	48° 14.929' N	120° 35.922' W
Helispot	H11	Approved for type 2	48° 14.492' N	120° 35.922' W
Helispot	H12	Approved for Type 2, it will be H-12, approved by ASGS	48° 13.325' N	120° 35.908' W
Helispot	H13	Helispot Airport	48° 20.782' N	120° 32.712' W
Helispot	H14	Type 2 Approved	48° 08.754' N	120° 29.813' W
Helispot	H16	Approved for Type 2	48° 07.74' N	120° 29.55' W
Helispot	H17		48° 15.150' N	120° 35.580' W
Helispot	H25	Above 25M State Park, Type 2 Approved	47° 52.212' N	120° 16.200' W
Helispot	H40	Couple snags and some dead and down need to take care of then would be a Type 2 helispot	48° 06.357' N	120° 20.452' W
Helispot	H41	Large open area could land Type 2 now, needs to be approved	48° 06.812' N	120° 17.722' W
Helispot	H43	Good for Type 2 needs a fire ring and a few snags removed on NE side, then could be approved	48° 12.342' N	120° 32.342' W
Helispot	H45	Needs some bushes cut then a Type 2, could approve it	48° 04.184' N	120° 09.980' W
Helispot	H46	Little horse shoe loop off the 8020 rd. Needs some brushing done and then approved	48° 01.430' N	120° 06.529' W
Helispot	H47		48° 05.720' N	120° 05.100' W

