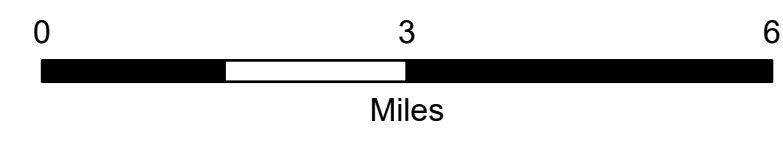


Ground Transportation Map

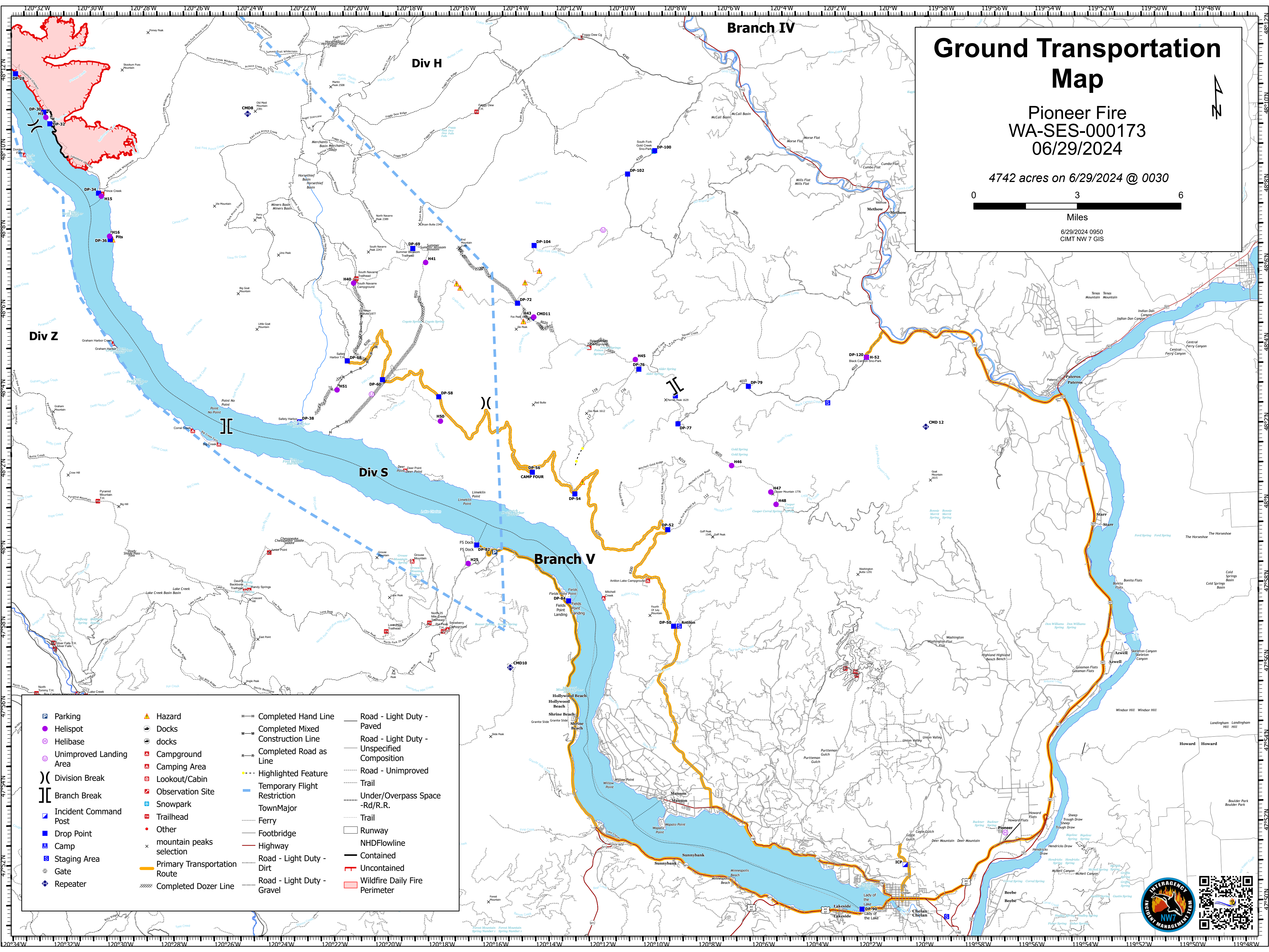
Pioneer Fire
WA-SES-000173
06/29/2024

4742 acres on 6/29/2024 @ 0030



Miles

6/29/2024 0950
CINT NW 7 GIS



Parking	Hazard	Completed Hand Line	Road - Light Duty - Paved
Helispot	Docks	Completed Mixed Construction Line	Road - Light Duty - Unspecified Composition
Unimproved Landing Area	Campground	Completed Road as Line	Road - Unimproved
Division Break	Lookout/Cabin	Highlighted Feature	Trail
Branch Break	Observation Site	Temporary Flight Restriction	Under/Overpass Space - Rd/R.R.
Incident Command Post	Snowpark	TownMajor	Trail
Drop Point	Trailhead	Ferry	Runway
Camp	Other	Footbridge	NHDFlowline
Staging Area	mountain peaks selection	Highway	Contained
Gate	Primary Transportation Route	Road - Light Duty - Dirt	Uncontained
Repeater	Completed Dozer Line	Road - Light Duty - Gravel	Wildfire Daily Fire Perimeter

