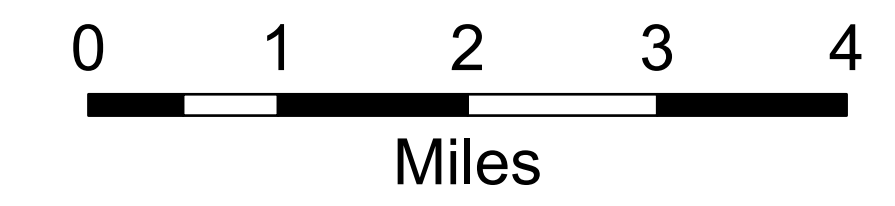


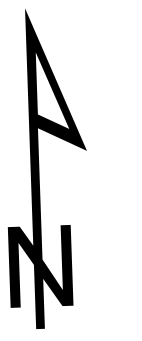
# Transportation Map

Pioneer Fire  
WA-SES-000173  
06/29/2024

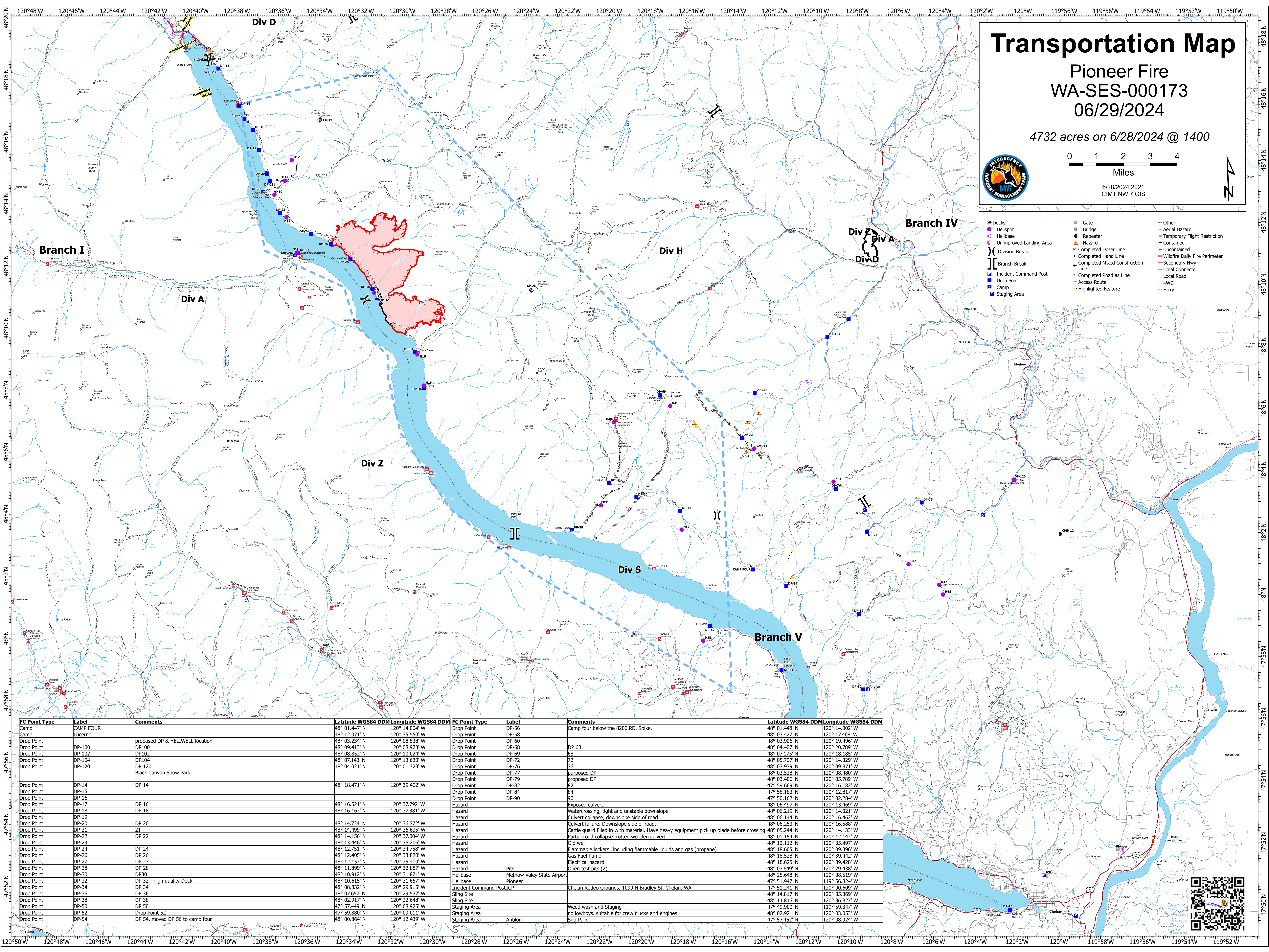
4732 acres on 6/28/2024 @ 1400



6/28/2024 2021  
CIMT NW 7 GIS



Docks	Gate	Other
Helispot	Bridge	Aerial Hazard
Helibase	Repeater	Temporary Flight Restriction
Unimproved Landing Area	Hazard	Contained
Division Break	Completed Dozer Line	Uncontained
Branch Break	Completed Hand Line	Wildfire Daily Fire Perimeter
Incident Command Post	Completed Mixed Construction Line	Secondary Hwy
Drop Point	Completed Road as Line	Local Road
Camp	Access Route	4WD
Staging Area	Highlighted Feature	Ferry



FC Point Type	Label	Comments	Latitude WGS84 DDM	Longitude WGS84 DDM	FC Point Type	Label	Comments	Latitude WGS84 DDM	Longitude WGS84 DDM
Camp	CAMP FOUR		48° 01.447' N	120° 14.004' W	Drop Point	DP-56	Camp four below the 8200 RD. Spike.	48° 01.448' N	120° 14.002' W
Camp	Lucerne		48° 12.071' N	120° 35.550' W	Drop Point	DP-58		48° 03.427' N	120° 17.408' W
Drop Point	DP-100	proposed DP & HELIWELL location	48° 03.234' N	120° 08.538' W	Drop Point	DP-60		48° 03.906' N	120° 19.496' W
Drop Point	DP-102	DP102	48° 08.413' N	120° 08.973' W	Drop Point	DP-68	DP 68	48° 04.407' N	120° 20.789' W
Drop Point	DP-104	DP104	48° 08.852' N	120° 10.024' W	Drop Point	DP-69	68	48° 07.175' N	120° 18.185' W
Drop Point	DP-120	DP 120	48° 07.143' N	120° 13.630' W	Drop Point	DP-72	72	48° 05.707' N	120° 14.329' W
Drop Point	DP-14	DP 14	48° 04.021' N	120° 01.323' W	Drop Point	DP-76	76	48° 03.939' N	120° 09.871' W
Drop Point	DP-15				Drop Point	DP-77	proposed DP	48° 02.528' N	120° 08.480' W
Drop Point	DP-16				Drop Point	DP-79	proposed DP	48° 03.406' N	120° 05.789' W
Drop Point	DP-17	DP 16	48° 16.521' N	120° 37.792' W	Drop Point	DP-82	82	47° 59.669' N	120° 16.182' W
Drop Point	DP-18	DP 18	48° 16.162' N	120° 37.381' W	Drop Point	DP-84	84	47° 58.183' N	120° 12.817' W
Drop Point	DP-20	DP 20	48° 14.734' N	120° 36.772' W	Drop Point	DP-90	90	47° 50.162' N	120° 02.284' W
Drop Point	DP-21	21	48° 14.499' N	120° 36.635' W	Hazard		Exposed culvert	48° 06.497' N	120° 13.469' W
Drop Point	DP-22	DP 22	48° 14.156' N	120° 37.004' W	Hazard		Watercrossing, tight and unstable downslope	48° 06.219' N	120° 14.021' W
Drop Point	DP-23		48° 13.446' N	120° 36.203' W	Hazard		Culvert collapse, downslope side of road	48° 06.144' N	120° 16.462' W
Drop Point	DP-24	DP 24	48° 12.751' N	120° 34.758' W	Hazard		Culvert failure, Downslope side of road.	48° 06.253' N	120° 16.588' W
Drop Point	DP-26	DP 26	48° 12.405' N	120° 33.820' W	Hazard		Cattle guard filled in with material. Have heavy equipment pick up blade before crossing	48° 05.244' N	120° 14.133' W
Drop Point	DP-27	DP 27	48° 12.152' N	120° 35.400' W	Hazard		Partial road collapse- rotten wooden culvert.	48° 01.154' N	120° 12.142' W
Drop Point	DP-28	DP 28	48° 11.899' N	120° 32.887' W	Hazard		Old well	48° 12.112' N	120° 35.409' W
Drop Point	DP-30	DP30	48° 10.912' N	120° 31.871' W	Hazard		Flammable lockers. Including flammable liquids and gas (propane)	48° 18.605' N	120° 39.396' W
Drop Point	DP-32	DP 32 - high quality Dock	48° 10.615' N	120° 31.657' W	Hazard		Gas Fuel Pump	48° 18.528' N	120° 39.442' W
Drop Point	DP-34	DP 34	48° 08.832' N	120° 29.915' W	Hazard		Electrical hazard.	48° 18.625' N	120° 39.428' W
Drop Point	DP-36	DP 36	48° 07.657' N	120° 29.523' W	Hazard		Pits	48° 07.649' N	120° 29.438' W
Drop Point	DP-38	DP 38	48° 02.917' N	120° 22.648' W	Helibase		Methow Valley State Airport	48° 25.648' N	120° 08.519' W
Drop Point	DP-50	DP 50	47° 57.449' N	120° 08.925' W	Helibase		Pioneer	47° 51.947' N	119° 56.824' W
Drop Point	DP-52	Drop Point 52	47° 59.880' N	120° 09.011' W	Incident Command Post	ICP	Chelan Rodeo Grounds, 1099 N Bradley St. Chelan, WA	47° 51.241' N	120° 00.609' W
Drop Point	DP-54	DP 54, moved DP 56 to camp four.	48° 00.864' N	120° 12.439' W	Slings Site			48° 14.817' N	120° 35.369' W
					Slings Site			48° 14.846' N	120° 36.827' W
					Staging Area		Weed wash and Staging	47° 49.900' N	119° 59.347' W
					Staging Area		no lowboys, suitable for crew trucks and engines	48° 02.921' N	120° 03.053' W
					Staging Area	Antilon	Sno-Park	47° 57.452' N	120° 08.924' W

