

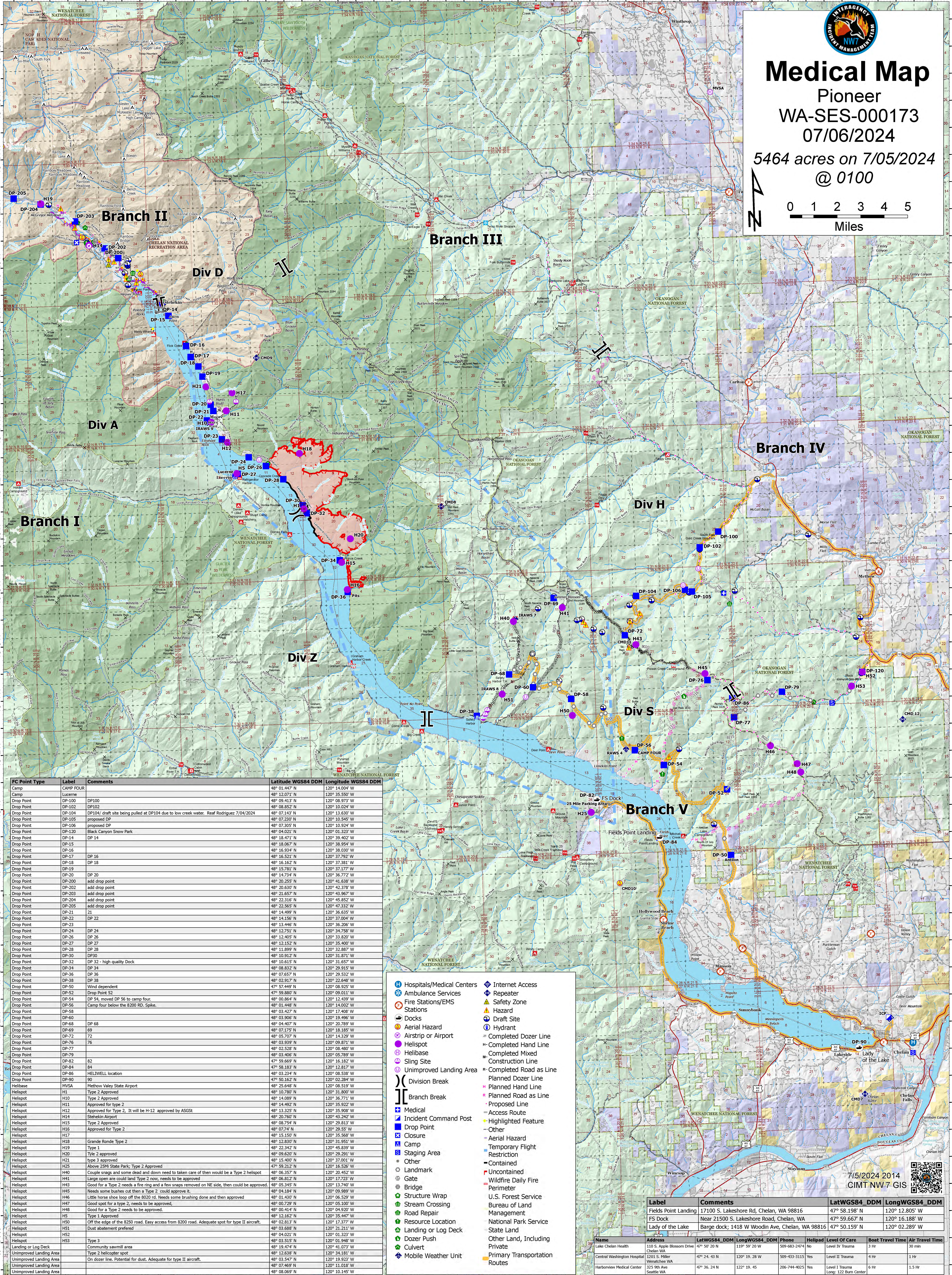
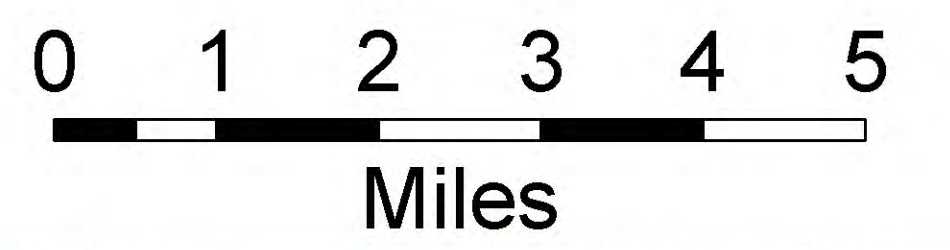
120°46'W 120°44'W 120°42'W 120°40'W 120°38'W 120°36'W 120°34'W 120°32'W 120°30'W 120°28'W 120°26'W 120°24'W 120°22'W 120°20'W 120°18'W 120°16'W 120°14'W 120°12'W 120°10'W 120°8'W 120°6'W 120°4'W 120°2'W 120°W 119°58'W 119°56'W



Medical Map

Pioneer
WA-SES-000173
07/06/2024

5464 acres on 7/05/2024
@ 0100



FC Point Type	Label	Comments	Latitude WGS84 DDM	Longitude WGS84 DDM
Camp	CAMP FOUR		48° 01.447' N	120° 14.004' W
Camp	Lucerne		48° 12.071' N	120° 35.550' W
Drop Point	DP-100	DP100	48° 09.413' N	120° 08.973' W
Drop Point	DP-102	DP102	48° 08.852' N	120° 10.024' W
Drop Point	DP-104	DP104 / draft site being pulled at DP104 due to low creek water. Reef Rodriguez 7/04/2024	48° 07.145' N	120° 13.630' W
Drop Point	DP-105	proposed DP	48° 07.230' N	120° 10.545' W
Drop Point	DP-106	proposed DP	48° 07.305' N	120° 10.924' W
Drop Point	DP-120	Black Canyon Snow Park	48° 04.021' N	120° 01.323' W
Drop Point	DP-14	DP 14	48° 18.471' N	120° 39.402' W
Drop Point	DP-15	DP 15	48° 18.067' N	120° 38.954' W
Drop Point	DP-16	DP 16	48° 16.934' N	120° 38.030' W
Drop Point	DP-17	DP 17	48° 16.521' N	120° 37.792' W
Drop Point	DP-18	DP 18	48° 16.162' N	120° 37.381' W
Drop Point	DP-19	DP 19	48° 15.781' N	120° 37.177' W
Drop Point	DP-20	DP 20	48° 14.734' N	120° 36.772' W
Drop Point	DP-200	add drop point	48° 20.255' N	120° 41.638' W
Drop Point	DP-202	add drop point	48° 20.630' N	120° 42.378' W
Drop Point	DP-203	add drop point	48° 21.657' N	120° 43.967' W
Drop Point	DP-204	add drop point	48° 22.316' N	120° 45.852' W
Drop Point	DP-205	add drop point	48° 22.565' N	120° 47.332' W
Drop Point	DP-21	21	48° 14.499' N	120° 36.635' W
Drop Point	DP-22	DP 22	48° 14.156' N	120° 37.004' W
Drop Point	DP-23	DP 23	48° 13.446' N	120° 36.206' W
Drop Point	DP-24	DP 24	48° 12.751' N	120° 34.758' W
Drop Point	DP-26	DP 26	48° 12.405' N	120° 33.820' W
Drop Point	DP-27	DP 27	48° 12.152' N	120° 35.400' W
Drop Point	DP-28	DP 28	48° 11.899' N	120° 32.887' W
Drop Point	DP-30	DP30	48° 10.912' N	120° 31.871' W
Drop Point	DP-32	DP 32 - high quality Dock	48° 10.615' N	120° 31.657' W
Drop Point	DP-34	DP 34	48° 08.831' N	120° 29.284' W
Drop Point	DP-36	DP 36	48° 07.657' N	120° 29.532' W
Drop Point	DP-38	DP 38	48° 02.917' N	120° 22.648' W
Drop Point	DP-50	Wind dependent	47° 57.449' N	120° 08.925' W
Drop Point	DP-52	Drop Point 52	47° 59.880' N	120° 09.011' W
Drop Point	DP-54	DP 54, moved DP 56 to camp four.	48° 00.864' N	120° 12.439' W
Drop Point	DP-56	Camp four below the 8200 RD. Spike.	48° 01.447' N	120° 14.004' W
Drop Point	DP-58	DP 58	48° 03.427' N	120° 17.408' W
Drop Point	DP-60	DP 60	48° 03.906' N	120° 19.496' W
Drop Point	DP-68	DP 68	48° 04.407' N	120° 20.789' W
Drop Point	DP-69	DP 69	48° 07.175' N	120° 18.185' W
Drop Point	DP-72	72	48° 05.707' N	120° 14.329' W
Drop Point	DP-75	76	48° 03.939' N	120° 09.874' W
Drop Point	DP-79	DP 79	48° 02.526' N	120° 06.539' W
Drop Point	DP-82	82	48° 03.406' N	120° 05.789' W
Drop Point	DP-84	84	47° 59.669' N	120° 16.182' W
Drop Point	DP-86	HELIXWELL location	47° 58.183' N	120° 12.817' W
Drop Point	DP-90	90	48° 03.234' N	120° 08.538' W
Helibase	MVSA	Medlow Valley State Airport	47° 56.162' N	120° 28.284' W
Helispot	H1	Type 2 Approved	48° 10.780' N	120° 31.800' W
Helispot	H10	Type 2 Approved	48° 14.089' N	120° 36.771' W
Helispot	H11	Approved for type 2	48° 14.492' N	120° 35.922' W
Helispot	H12	Approved for Type 2. It will be H-12 approved by ASGS	48° 13.325' N	120° 35.908' W
Helispot	H14	Stehrekus Airport	48° 20.760' N	120° 43.242' W
Helispot	H15	Type 2 Approved	48° 06.754' N	120° 29.813' W
Helispot	H16	Approved for Type 2	48° 07.274' N	120° 29.555' W
Helispot	H17	Approved for Type 2	48° 15.150' N	120° 35.568' W
Helispot	H18	Grande Ronde Type 2	48° 12.830' N	120° 31.951' W
Helispot	H19	Type 1	48° 22.342' N	120° 45.839' W
Helispot	H20	Type 2 approved	48° 09.620' N	120° 29.291' W
Helispot	H21	Type 3 approved	48° 15.402' N	120° 37.011' W
Helispot	H25	Above 25M State Park; Type 2 Approved	47° 59.212' N	120° 16.526' W
Helispot	H40	Couple snags and some dead and down need to taken care of then would be a Type 2 helispot	48° 06.357' N	120° 20.452' W
Helispot	H41	Large open area could land Type 2 now, needs to be approved	48° 06.812' N	120° 17.723' W
Helispot	H43	Good for a Type 2 needs a fire ring and a few snags removed on NE side, then could be approved.	48° 05.345' N	120° 13.740' W
Helispot	H45	Needs some bushes cut then a Type 2 could approve it.	48° 04.189' N	120° 09.989' W
Helispot	H46	Little house above loop off the 8200 rd. Needs some brushing done and then approved	48° 01.430' N	120° 06.539' W
Helispot	H47	Good spot for a type 2, needs to be approved.	48° 06.729' N	120° 05.100' W
Helispot	H48	Good for a Type 2 needs to be approved.	48° 00.414' N	120° 04.920' W
Helispot	H5	Type 1 Approved	48° 12.162' N	120° 35.447' W
Helispot	H50	Off the edge of the 8200 road. Easy access from 8200 road. Adequate spot for type II aircraft.	48° 02.813' N	120° 17.377' W
Helispot	H51	Duff abatement preferred	48° 03.688' N	120° 21.211' W
Helispot	H52	Type 3 approved	48° 04.021' N	120° 01.323' W
Helispot	H53	Type 3	48° 03.515' N	120° 01.948' W
Landing or Log Deck		Community sawmill area	48° 19.474' N	120° 41.073' W
Unimproved Landing Area		Type 2 helispot spot	48° 12.638' N	120° 34.181' W
Unimproved Landing Area		On dozer line. Potential for dust. Adequate for type II aircraft.	48° 03.547' N	120° 19.923' W
Unimproved Landing Area			48° 07.469' N	120° 11.018' W
Unimproved Landing Area			48° 06.069' N	120° 10.145' W

- Hospitals/Medical Centers
- Ambulance Services
- Fire Stations/EMS Stations
- Docks
- Aerial Hazard
- Airstrip or Airport
- Helispot
- Helibase
- Sling Site
- Unimproved Landing Area
- Division Break
- Branch Break
- Medical
- Incident Command Post
- Drop Point
- Closure
- Camp
- Staging Area
- Other
- Landmark
- Gate
- Bridge
- Stream Wrap
- Structure Crossing
- Road Repair
- Resource Location
- Landing or Log Deck
- Dozer Push
- Culvert
- Mobile Weather Unit
- Internet Access
- Repeater
- Safety Zone
- Hazard
- Draft Site
- Hydrant
- Completed Dozer Line
- Completed Hand Line
- Completed Mixed Construction Line
- Completed Road as Line
- Planned Dozer Line
- Planned Hand Line
- Planned Road as Line
- Proposed Line
- Access Route
- Highlighted Feature
- Other
- Aerial Hazard
- Temporary Flight Restriction
- Contained
- Uncontained
- Wildfire Daily Fire Perimeter
- U.S. Forest Service Bureau of Land Management
- National Park Service State Land
- Other Land, Including Private
- Primary Transportation Routes

Label	Comments	LatWGS84 DDM	LongWGS84 DDM
Fields Point Landing	17100 S. Lakeshore Rd, Chelan, WA 98816	47° 58.198' N	120° 12.805' W
FS Dock	Near 21500 S. Lakeshore Road, Chelan, WA	47° 59.667' N	120° 16.188' W
Lady of the Lake	Dock barge; 1418 W Woodin Ave, Chelan, WA 98816	47° 50.159' N	120° 02.289' W

Name	Address	LatWGS84 DDM	LongWGS84 DDM	Phone	Helispot	Level Of Care	Boat Travel Time	Air Travel Time
Lake Chelan Health	110 S. Apple Blossom Drive Chelan WA	47° 50' 20" N	119° 59' 20" W	509-683-2474	No	Level IV Trauma	3 Hr	30 min
Central Washington Hospital	1201 S. Miller Wenatchee WA	47° 24' 43" N	120° 19' 28" W	509-433-3115	Yes	Level II Trauma	4 Hr	1 Hr
Harborview Medical Center	325 9th Ave Seattle WA	47° 36' 24" N	122° 19' 45" W	206-744-4025	Yes	Level I Trauma (Log: 122 Burn Center)	6 Hr	1.5 Hr

7/5/2024 2014
CIMT NW 7 GIS

120°48'W 120°46'W 120°44'W 120°42'W 120°40'W 120°38'W 120°36'W 120°34'W 120°32'W 120°30'W 120°28'W 120°26'W 120°24'W 120°22'W 120°20'W 120°18'W 120°16'W 120°14'W 120°12'W 120°10'W 120°8'W 120°6'W 120°4'W 120°2'W 120°W 119°58'W 119°56'W