

# Air Ops Map

## Pioneer

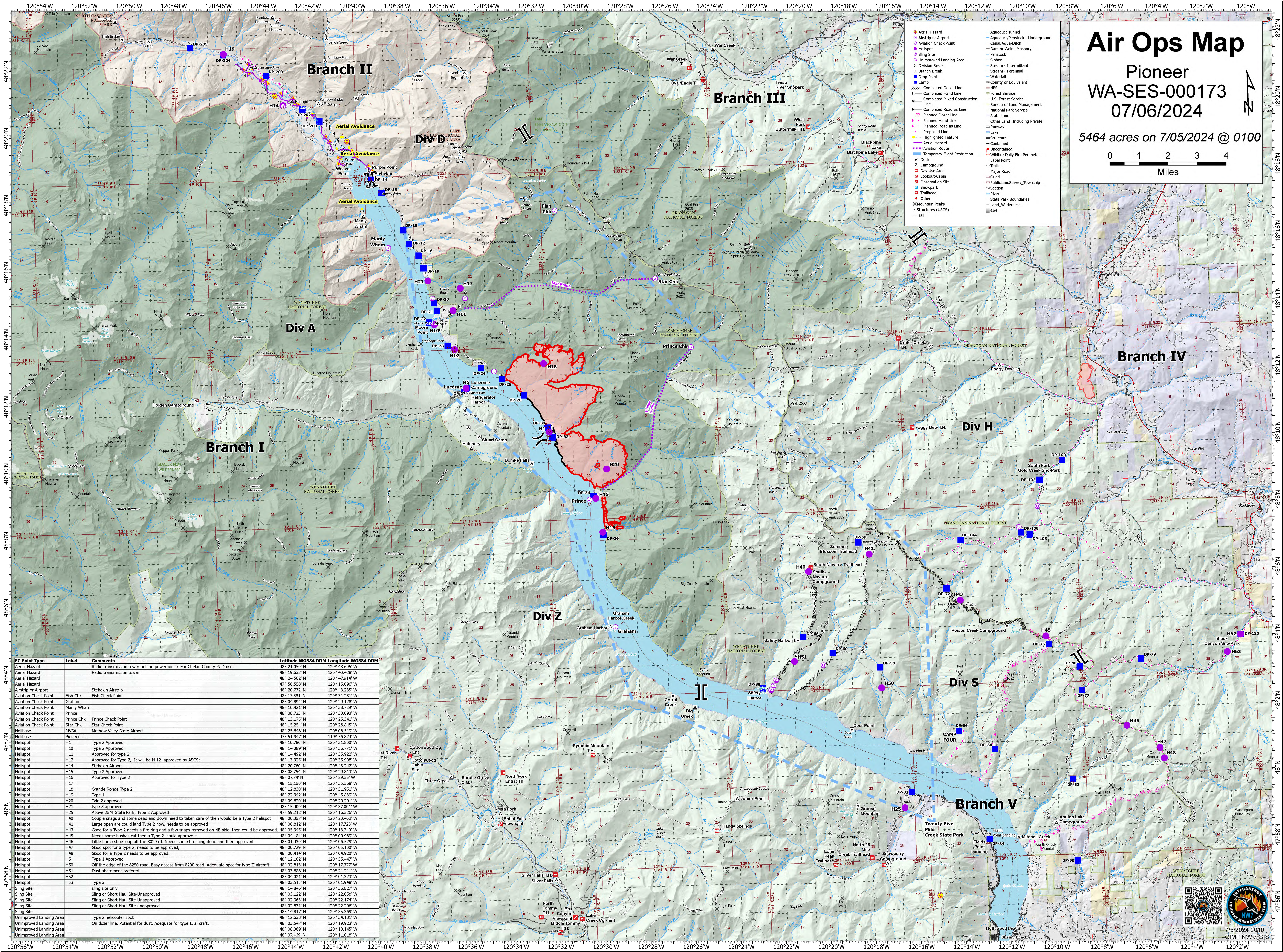
### WA-SES-000173

#### 07/06/2024

5464 acres on 7/05/2024 @ 0100

0 1 2 3 4 Miles

- Aerial Hazard
- Airstrip or Airport
- Aviation Check Point
- Camp
- Completed Dozer Line
- Completed Hand Line
- Completed Mixed Construction Line
- Completed Road as Line
- Planned Dozer Line
- Planned Hand Line
- Planned Road as Line
- Proposed Line
- Highlighted Feature
- Aerial Hazard
- Aviation Route
- Temporary Flight Restriction
- Dock
- Campground
- Day Use Area
- Lookout/Cabin
- Observation Site
- Snowpack
- Trailhead
- Other
- Mountain Peaks
- Structures (USGS)
- Trail
- Aqueduct/Tunnel
- Aqueduct/Penstock - Underground
- Canal/Aqueduct
- Dam or Weir - Masonry
- Penstock
- Siphon
- Stream - Intermittent
- Stream - Perennial
- Waterfall
- County or Equivalent
- NPS
- Forest Service
- U.S. Forest Service
- Bureau of Land Management
- National Park Service
- State Land
- Waterfall
- Runway
- Lake
- Structure
- Contour
- Uncontaminated
- Wildfire Daily Fire Perimeter
- Label Point
- Trailhead
- Major Road
- Quad
- PublicLandSurvey\_Township
- Cabin
- River
- State Park Boundaries
- Land\_Wilderness
- BS4



FC Point Type	Label	Comments	Latitude WGS84 DDM	Longitude WGS84 DDM
Aerial Hazard		Radio transmission tower behind powerhouse. For Chelan County PUD use.	48° 21.050' N	120° 43.605' W
Aerial Hazard		Radio transmission tower	48° 19.633' N	120° 40.428' W
Aerial Hazard			48° 24.502' N	120° 47.914' W
Aerial Hazard			47° 56.586' N	120° 45.586' W
Airstrip or Airport	Fish Chk	Fish Chk Airstrip	48° 20.732' N	120° 43.252' W
Aviation Check Point	Graham	Graham	48° 17.381' N	120° 31.231' W
Aviation Check Point	Manly Wham	Manly Wham	48° 04.894' N	120° 29.128' W
Aviation Check Point	Prince Chk	Prince Check Point	48° 16.421' N	120° 38.729' W
Aviation Check Point	Star Chk	Star Check Point	48° 08.723' N	120° 30.092' W
Helibase	MVSA	Methow Valley State Airport	48° 13.175' N	120° 25.341' W
Helibase	Pioneer		48° 15.254' N	120° 26.845' W
Helispot	H1	Type 2 Approved	48° 25.648' N	120° 08.519' W
Helispot	H10	Type 2 Approved	47° 51.947' N	119° 56.824' W
Helispot	H11	Approved for Type 2	48° 10.802' N	120° 11.802' W
Helispot	H12	Approved for Type 2, It will be H-12 approved by ASGS	48° 14.089' N	120° 36.771' W
Helispot	H14	Steekin Airport	48° 14.492' N	120° 35.922' W
Helispot	H15	Type 2 Approved	48° 13.325' N	120° 35.908' W
Helispot	H16	Approved for Type 2	48° 20.760' N	120° 43.242' W
Helispot	H17	Approved for Type 2	48° 08.754' N	120° 28.813' W
Helispot	H18	Grande Ronde Type 2	48° 07.74' N	120° 29.55' W
Helispot	H19	Type 1	48° 15.150' N	120° 35.568' W
Helispot	H20	Type 2 approved	48° 12.830' N	120° 31.951' W
Helispot	H21	Type 3 approved	48° 04.021' N	120° 01.323' W
Helispot	H22	Above 25M State Park; Type 2 Approved	48° 09.620' N	120° 29.291' W
Helispot	H40	Couple snags and some dead and down need to taken care of then would be a Type 2 helispot	48° 15.400' N	120° 37.001' W
Helispot	H41	Large open area could land Type 2 now, needs to be approved.	48° 59.212' N	120° 16.526' W
Helispot	H43	Good for a Type 2 needs a fire ring and a few snags removed on NE side, then could be approved.	48° 06.357' N	120° 20.452' W
Helispot	H45	Needs some bushes cut then a Type 2 could approve it.	48° 03.345' N	120° 13.740' W
Helispot	H46	Little horse shoe loop off the 8020 rd. Needs some brushing done and then approved	48° 04.184' N	120° 09.989' W
Helispot	H47	Good spot for a Type 2, needs to be approved.	48° 01.430' N	120° 06.529' W
Helispot	H48	Good for a Type 2, needs to be approved.	48° 00.729' N	120° 05.100' W
Helispot	H5	Type 1 Approved	48° 03.414' N	120° 04.114' W
Helispot	H50	Off the edge of the 8250 road. Easy access from 8200 road. Adequate spot for type II aircraft.	48° 12.162' N	120° 35.447' W
Helispot	H51	Dust abatement preferred	48° 02.813' N	120° 17.377' W
Helispot	H52	Type 3	48° 03.688' N	120° 21.211' W
Helispot	H53	Type 3	48° 04.021' N	120° 01.323' W
Sling Site		sling site only	48° 03.515' N	120° 01.948' W
Sling Site		Sling or Short Haul Site-Unapproved	48° 14.846' N	120° 36.827' W
Sling Site		Sling or Short Haul Site-Unapproved	48° 03.122' N	120° 32.058' W
Sling Site		Sling or Short Haul Site-Unapproved	48° 02.963' N	120° 22.174' W
Sling Site		Sling or Short Haul Site-Unapproved	48° 02.831' N	120° 03.246' W
Sling Site		Sling or Short Haul Site-Unapproved	48° 14.817' N	120° 35.369' W
Unimproved Landing Area		Type 2 Helicopter spot	48° 12.638' N	120° 34.181' W
Unimproved Landing Area		On dozer line. Potential for dust. Adequate for type II aircraft.	48° 03.547' N	120° 19.923' W
Unimproved Landing Area			48° 08.069' N	120° 10.145' W
Unimproved Landing Area			48° 07.469' N	120° 11.018' W

