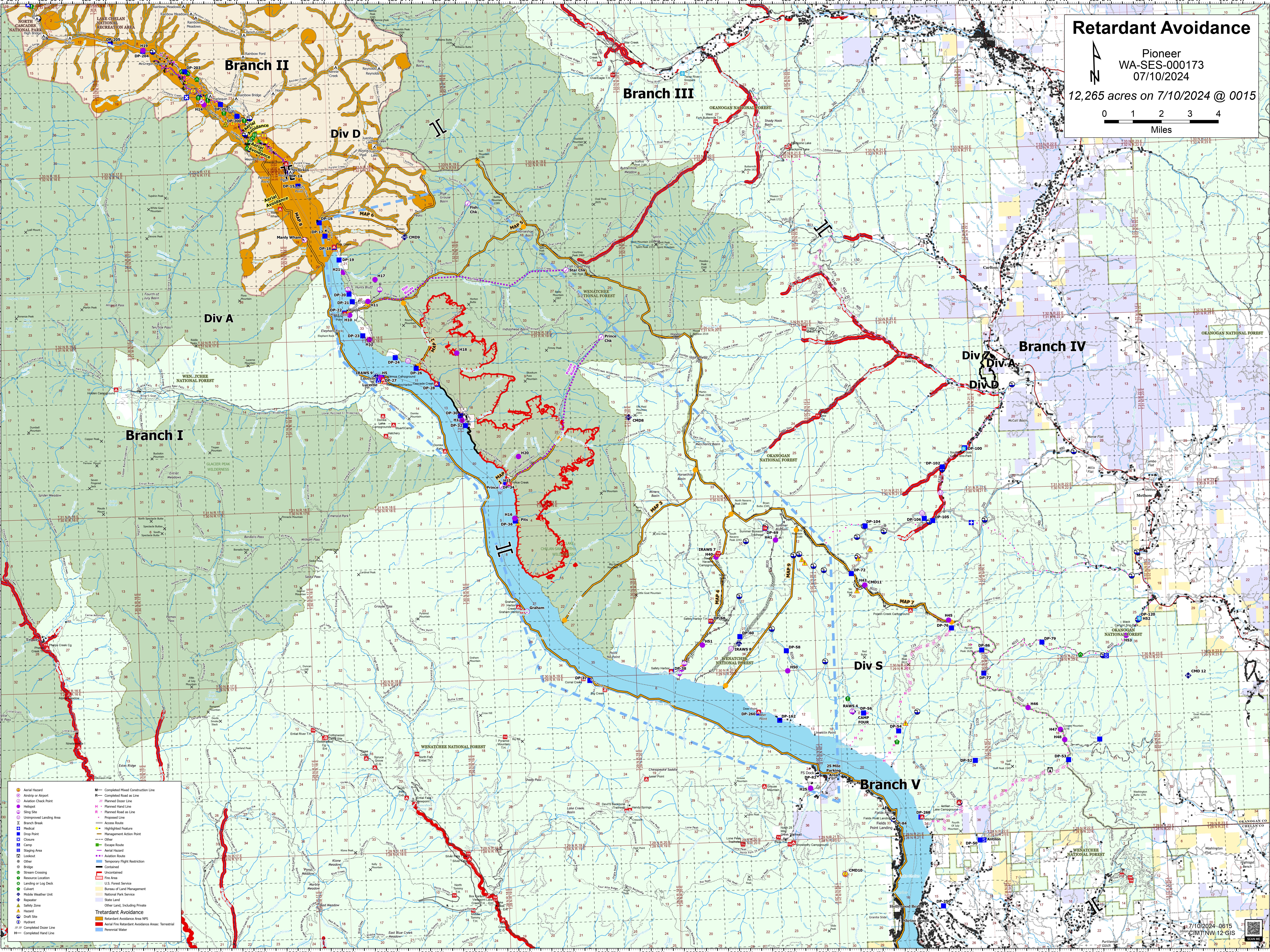


Retardant Avoidance

Pioneer
WA-SES-000173
07/10/2024

12,265 acres on 7/10/2024 @ 0015

Miles



- Aerial Hazard
- Aerial Check Point
- Helispot
- Slingsite
- Unimproved Landing Area
- Branch Break
- Drop Point
- Closure
- Staging Area
- Lookout
- Other
- Stream Crossing
- Resource Location
- Landing or Log Deck
- Culvert
- Mobile Weather Unit
- Repeater
- Safety Zone
- Hazard
- Draft Site
- Aerial Hazard
- Aerial Check Point
- Helispot
- Slingsite
- Unimproved Landing Area
- Branch Break
- Drop Point
- Closure
- Staging Area
- Lookout
- Other
- Stream Crossing
- Resource Location
- Landing or Log Deck
- Culvert
- Mobile Weather Unit
- Repeater
- Safety Zone
- Hazard
- Draft Site

- Completed Mixed Construction Line
- Completed Road as Line
- Planned Dotted Line
- Planned Hand Line
- Planned Road as Line
- Proposed Line
- Access Route
- Highlighted Feature
- Management Action Point
- Other
- Escape Route
- Aerial Hazard
- Aerial Check Point
- Temporary Flight Restriction
- Contained
- Uncontaminated
- Fire Area
- U.S. Forest Service
- Bureau of Land Management
- National Park Service
- State Land
- Other Land, Including Private

- Retardant Avoidance Area NPS
- Aerial Fire Retardant Avoidance Areas: Terrestrial
- Perennial Water