

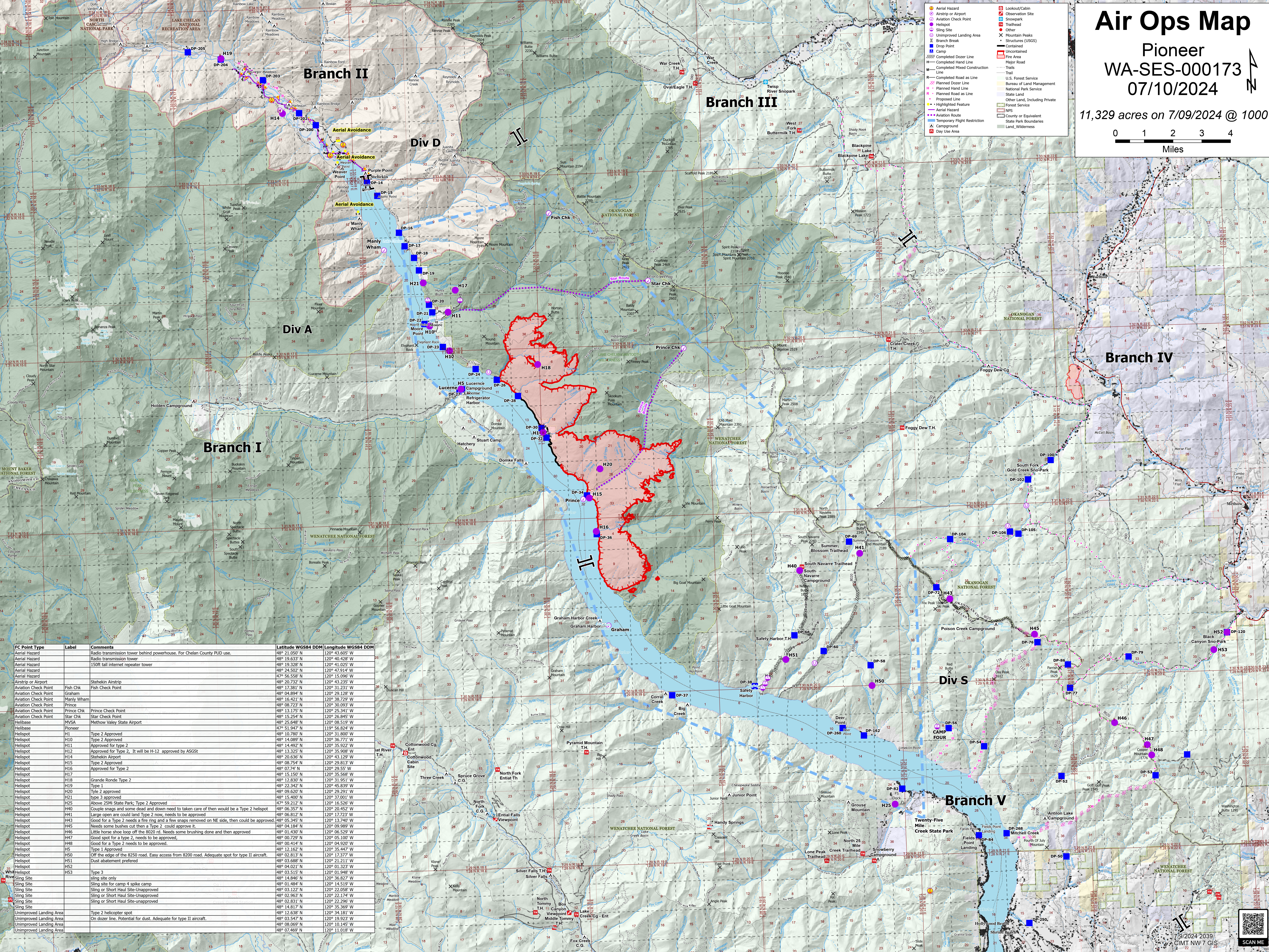
# Air Ops Map

## Pioneer WA-SES-000173 07/10/2024

11,329 acres on 7/09/2024 @ 1000

0 1 2 3 4  
Miles

- Aerial Hazard
- Airstrip or Airport
- Aviation Check Point
- Helispot
- Sling Site
- Unimproved Landing Area
- Branch Break
- Drop Point
- Camp
- Completed Dozer Line
- Completed Hand Line
- Completed Mixed Construction
- Line
- R - Completed Road as Line
- Planned Dozer Line
- Planned Hand Line
- Planned Road as Line
- Proposed Line
- Highlighted Feature
- Line
- Temporary Flight Restriction
- Campground
- Day Use Area
- Lookout/Cabin
- Observation Site
- Snowpark
- Other
- Mountain Peaks
- Structures (USFS)
- Contained
- Uncontained
- Fire Area
- Major Road
- Trail
- U.S. Forest Service
- Bureau of Land Management
- National Park Service
- State Land
- Other Land, Including Private
- Forest Service
- NPS
- County or Equivalent
- State Park Boundaries
- Land\_Wilderness



FC Point Type	Label	Comments	Latitude WGS84 DDM	Longitude WGS84 DDM
Aerial Hazard		Radio transmission tower behind powerhouse. For Chelan County PUD use.	48° 21.050' N	120° 43.605' W
Aerial Hazard		Radio transmission tower	48° 19.633' N	120° 40.428' W
Aerial Hazard		150ft tall internet repeater tower	48° 19.328' N	120° 41.025' W
Aerial Hazard			48° 24.502' N	120° 47.914' W
Aerial Hazard			47° 56.558' N	120° 15.096' W
Aerial Hazard			48° 00.232' N	120° 43.236' W
Aviation Check Point	Fish Chk	Stehkin Airstrip	48° 17.381' N	120° 31.211' W
Aviation Check Point	Graham	Fish Check Point	48° 04.894' N	120° 29.128' W
Aviation Check Point	Manly Wham		48° 16.421' N	120° 38.729' W
Aviation Check Point	Prince		48° 08.723' N	120° 30.093' W
Aviation Check Point	Prince Chk	Prince Check Point	48° 13.754' N	120° 25.341' W
Aviation Check Point	Star Chk	Star Check Point	48° 15.254' N	120° 26.845' W
Helibase	MVSA	Methow Valley State Airport	48° 25.648' N	120° 08.519' W
Helibase	Pioneer		47° 51.947' N	119° 56.824' W
Helispot	H1	Type 2 Approved	48° 10.780' N	120° 31.800' W
Helispot	H10	Type 2 Approved	48° 14.492' N	120° 35.922' W
Helispot	H11	Approved for type 2	48° 13.325' N	120° 35.908' W
Helispot	H12	Approved for Type 2, It will be H-12 approved by ASGSI	48° 20.636' N	120° 43.129' W
Helispot	H14	Stehkin Airport	48° 08.554' N	120° 29.813' W
Helispot	H15	Type 2 Approved	48° 07.74' N	120° 29.827' W
Helispot	H16	Approved for Type 2	48° 15.150' N	120° 35.568' W
Helispot	H17		48° 12.830' N	120° 31.951' W
Helispot	H18	Grande Ronde Type 2	48° 22.422' N	120° 45.839' W
Helispot	H19	Type 1	48° 09.620' N	120° 32.740' W
Helispot	H20	Type 2 approved	48° 15.600' N	120° 37.001' W
Helispot	H21	Type 3 approved	47° 59.212' N	120° 16.526' W
Helispot	H22	Above 25M State Park; Type 2 Approved	48° 06.357' N	120° 20.452' W
Helispot	H41	Large open area could land Type 2 now, needs to be approved	48° 06.812' N	120° 17.723' W
Helispot	H43	Good for a Type 2 needs a fire line and a few snags removed on NE side, then could be approved	48° 13.754' N	120° 25.341' W
Helispot	H45	Needs some bushes cut then a Type 2 could approve it.	48° 04.184' N	120° 09.989' W
Helispot	H46	Little horse shoe loop off the 8020 rd. Needs some brushing done and then approved	48° 01.430' N	120° 06.529' W
Helispot	H47	Good spot for a type 2, needs to be approved.	48° 00.729' N	120° 05.100' W
Helispot	H48	Good for a Type 2 needs to be approved.	48° 04.114' N	120° 04.920' W
Helispot	H5	Type 1 Approved	48° 12.162' N	120° 17.477' W
Helispot	H50	Off the edge of the 8250 road. Easy access from 8200 road. Adequate spot for type II aircraft.	48° 02.813' N	120° 17.377' W
Helispot	H51	Dust abatement preferred	48° 03.688' N	120° 21.211' W
Helispot	H52		48° 04.021' N	120° 01.323' W
Helispot	H53	Type 3	48° 03.515' N	120° 01.948' W
Helispot	H54	Sling site only	48° 14.846' N	120° 36.827' W
Sling Site		Sling site for short haul 4 spike camp	48° 01.484' N	120° 14.519' W
Sling Site		Sling or Short Haul Site-Unapproved	48° 03.122' N	120° 22.058' W
Sling Site		Sling or Short Haul Site-Unapproved	48° 02.963' N	120° 22.174' W
Sling Site		Sling or Short Haul Site-Unapproved	48° 02.831' N	120° 22.246' W
Sling Site		Sling or Short Haul Site-Unapproved	48° 14.817' N	120° 35.369' W
Unimproved Landing Area		Type 2 helicopter spot	48° 12.638' N	120° 34.181' W
Unimproved Landing Area		On dozer line. Potential for dust. Adequate for type II aircraft.	48° 03.547' N	120° 19.923' W
Unimproved Landing Area			48° 08.069' N	120° 10.145' W
Unimproved Landing Area			48° 07.469' N	120° 11.018' W