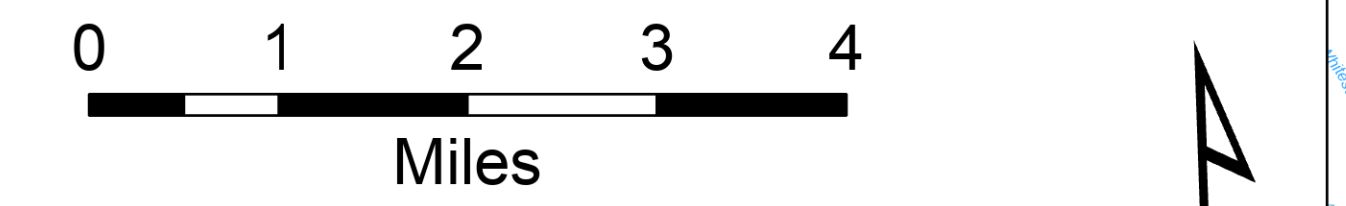


# Transportation Map

Pioneer Fire  
WA-SES-000173  
07/10/2024

12,265 acres on 7/10/2024 @ 0015

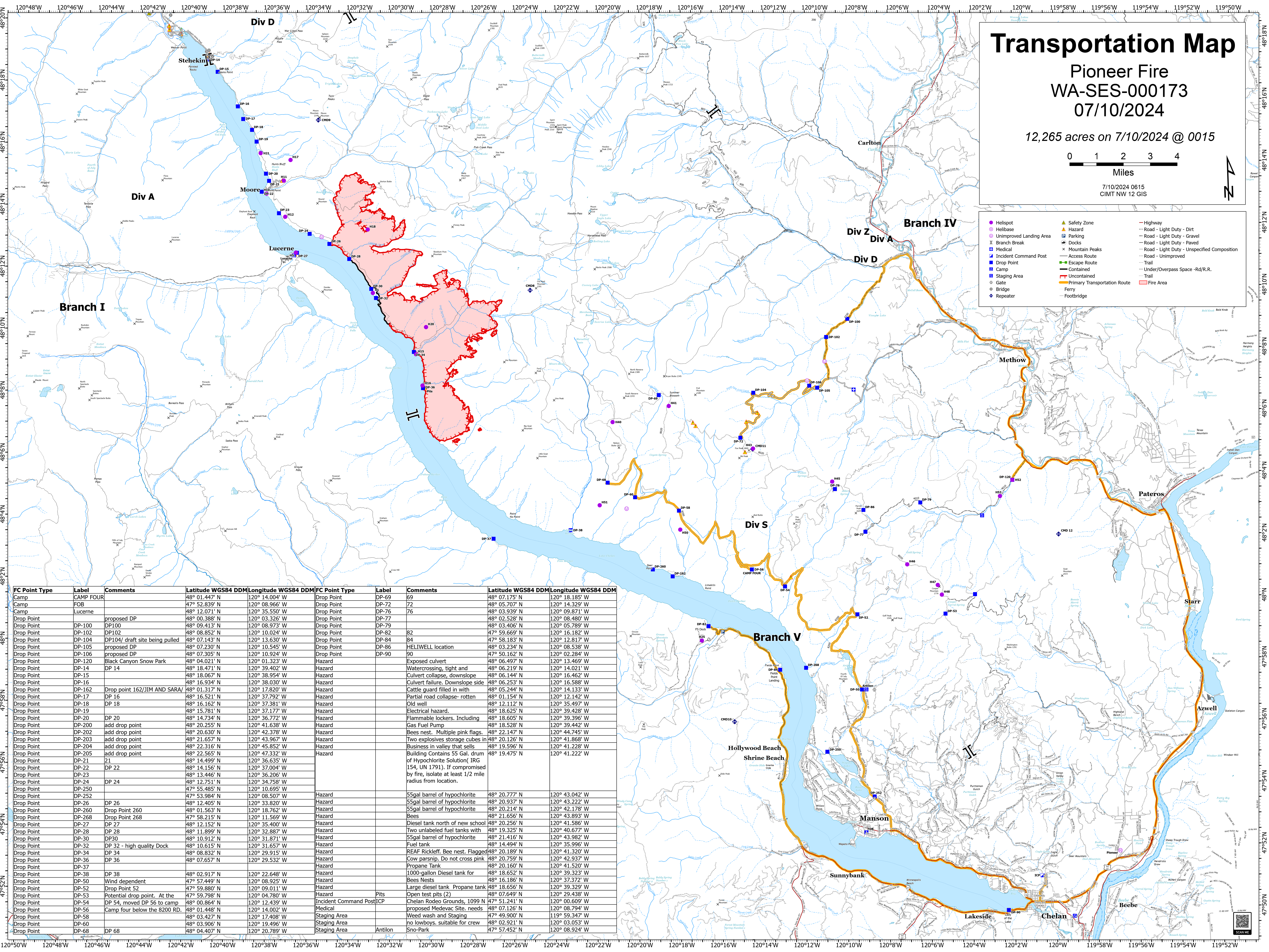


Miles

7/10/2024 0615  
CIMT NW 12 GIS



● Helibase	▲ Safety Zone	— Highway
○ Unimproved Landing Area	■ Hazard	— Road - Light Duty - Dirt
⌵ Branch Break	□ Parking	— Road - Light Duty - Gravel
⌵ Medical	⌵ Docks	— Road - Light Duty - Paved
⌵ Incident Command Post	⌵ Mountain Peaks	— Road - Light Duty - Unspecified Composition
■ Drop Point	— Access Route	— Trail - Unimproved
■ Camp	— Escape Route	— Trail
■ Staging Area	— Contained	— Under/Overpass Space - Rd/R.R.
○ Gate	— Uncontained	— Trail
○ Bridge	— Primary Transportation Route	— Fire Area
⌵ Repeater	— Ferry	
	— Footbridge	



FC Point Type	Label	Comments	Latitude WGS84 DDM	Longitude WGS84 DDM	FC Point Type	Label	Comments	Latitude WGS84 DDM	Longitude WGS84 DDM
Camp	CAMP FOUR		48° 01.447' N	120° 14.004' W	Drop Point	DP-69	69	48° 07.175' N	120° 18.185' W
Camp	FOB		47° 52.839' N	120° 08.966' W	Drop Point	DP-72	72	48° 05.707' N	120° 14.329' W
Camp	Lucerne		48° 12.071' N	120° 35.550' W	Drop Point	DP-76	76	48° 03.939' N	120° 09.871' W
Drop Point	DP-100	proposed DP	48° 00.388' N	120° 03.326' W	Drop Point	DP-77	77	48° 02.528' N	120° 08.480' W
Drop Point	DP-102	DP102	48° 09.413' N	120° 08.973' W	Drop Point	DP-79	79	48° 03.406' N	120° 05.789' W
Drop Point	DP-104	DP104/ draft site being pulled	48° 08.852' N	120° 10.024' W	Drop Point	DP-82	82	47° 59.669' N	120° 16.182' W
Drop Point	DP-105	proposed DP	48° 07.143' N	120° 13.630' W	Drop Point	DP-84	84	47° 58.183' N	120° 12.817' W
Drop Point	DP-106	proposed DP	48° 07.230' N	120° 10.945' W	Drop Point	DP-86	86	48° 03.234' N	120° 08.538' W
Drop Point	DP-120	Black Canyon Snow Park	48° 07.305' N	120° 10.924' W	Drop Point	DP-90	90	47° 50.162' N	120° 02.284' W
Drop Point	DP-14	DP 14	48° 04.021' N	120° 01.323' W	Hazard		Exposed culvert	48° 06.497' N	120° 13.469' W
Drop Point	DP-15		48° 18.471' N	120° 39.402' W	Hazard		Watercrossing, tight and	48° 06.219' N	120° 14.021' W
Drop Point	DP-16		48° 18.067' N	120° 38.954' W	Hazard		Culvert collapse, downslope	48° 06.144' N	120° 16.462' W
Drop Point	DP-162	Drop point 162/JIM AND SARA/	48° 16.934' N	120° 38.030' W	Hazard		Culvert failure. Downslope side	48° 06.253' N	120° 16.588' W
Drop Point	DP-17	DP 16	48° 01.317' N	120° 17.820' W	Hazard		Cattle guard filled in with	48° 05.244' N	120° 14.133' W
Drop Point	DP-18		48° 16.521' N	120° 37.792' W	Hazard		Partial road collapse- rotten	48° 01.154' N	120° 12.142' W
Drop Point	DP-19		48° 16.162' N	120° 37.381' W	Hazard		Old well	48° 12.112' N	120° 35.497' W
Drop Point	DP-20	DP 20	48° 14.734' N	120° 36.772' W	Hazard		Electrical hazard.	48° 18.625' N	120° 39.428' W
Drop Point	DP-200	add drop point	48° 20.255' N	120° 41.638' W	Hazard		Flammable lockers. Including	48° 18.605' N	120° 39.396' W
Drop Point	DP-202	add drop point	48° 20.630' N	120° 41.638' W	Hazard		Gas Fuel Pump	48° 18.528' N	120° 39.442' W
Drop Point	DP-203	add drop point	48° 20.630' N	120° 42.378' W	Hazard		Bees nest. Multiple pink flags.	48° 22.147' N	120° 44.745' W
Drop Point	DP-204	add drop point	48° 21.657' N	120° 43.967' W	Hazard		Two explosives storage cubes in	48° 20.126' N	120° 41.868' W
Drop Point	DP-204	add drop point	48° 22.316' N	120° 45.852' W	Hazard		Business in valley that sells	48° 19.596' N	120° 41.228' W
Drop Point	DP-205	add drop point	48° 22.565' N	120° 47.332' W	Hazard		Building Contains 55 Gal. drum	48° 19.475' N	120° 41.222' W
Drop Point	DP-21	21	48° 14.499' N	120° 36.635' W			of Hypochlorite Solution( IRG		
Drop Point	DP-22	DP 22	48° 14.156' N	120° 37.004' W			154, UN 1791). If compromised		
Drop Point	DP-23		48° 13.446' N	120° 36.206' W			by fire, isolate at least 1/2 mile		
Drop Point	DP-24	DP 24	48° 12.751' N	120° 34.758' W			radius from location.		
Drop Point	DP-250		47° 55.485' N	120° 10.695' W					
Drop Point	DP-252		47° 53.984' N	120° 08.507' W	Hazard		55gal barrel of hypochlorite	48° 20.777' N	120° 43.042' W
Drop Point	DP-26	DP 26	48° 12.405' N	120° 33.820' W	Hazard		55gal barrel of hypochlorite	48° 20.937' N	120° 43.222' W
Drop Point	DP-260	Drop Point 260	48° 01.563' N	120° 18.762' W	Hazard		55gal barrel of hypochlorite	48° 20.214' N	120° 42.178' W
Drop Point	DP-268	Drop Point 268	47° 58.215' N	120° 11.569' W	Hazard		Bees	48° 21.656' N	120° 43.893' W
Drop Point	DP-27	DP 27	48° 12.152' N	120° 35.400' W	Hazard		Diesel tank north of new school	48° 20.256' N	120° 41.586' W
Drop Point	DP-28	DP 28	48° 11.899' N	120° 32.887' W	Hazard		Two unlabeled fuel tanks with	48° 19.325' N	120° 40.677' W
Drop Point	DP-30	DP30	48° 10.912' N	120° 31.871' W	Hazard		55gal barrel of hypochlorite	48° 21.416' N	120° 43.982' W
Drop Point	DP-32	DP 32 - high quality Dock	48° 10.615' N	120° 31.657' W	Hazard		Fuel tank	48° 14.494' N	120° 35.996' W
Drop Point	DP-34	DP 34	48° 08.832' N	120° 29.915' W	Hazard		REAF Rickleff. Bee nest. Flagged	48° 20.189' N	120° 41.320' W
Drop Point	DP-36	DP 36	48° 07.657' N	120° 29.532' W	Hazard		Cow parsnip. Do not cross pink	48° 20.759' N	120° 42.937' W
Drop Point	DP-37				Hazard		Propane Tank	48° 20.160' N	120° 41.520' W
Drop Point	DP-38	DP 38	48° 02.917' N	120° 22.648' W	Hazard		1000-gallon Diesel tank for	48° 18.652' N	120° 39.323' W
Drop Point	DP-50	Wind dependent	47° 57.449' N	120° 08.925' W	Hazard		Bees Nests	48° 16.186' N	120° 37.372' W
Drop Point	DP-52	Drop Point 52	47° 59.880' N	120° 09.011' W	Hazard		Large diesel tank Propane tank	48° 18.656' N	120° 39.329' W
Drop Point	DP-53	Potential drop point. At the	47° 59.798' N	120° 04.780' W			Open test pits (2)	47° 51.241' N	120° 00.609' W
Drop Point	DP-54	DP 54, moved DP 56 to camp	48° 00.864' N	120° 12.439' W	Incident Command Post	ICP	Chelan Rodeo Grounds, 1099 N	48° 07.649' N	120° 29.438' W
Drop Point	DP-56	Camp four below the 8200 RD.	48° 01.448' N	120° 14.002' W	Medical		proposed Medevac Site. needs	48° 07.126' N	120° 08.794' W
Drop Point	DP-58		48° 03.427' N	120° 17.408' W	Staging Area		Weed wash and Staging	47° 49.900' N	119° 59.347' W
Drop Point	DP-60		48° 03.906' N	120° 19.496' W	Staging Area		no lowboys. suitable for crew	48° 02.921' N	120° 03.053' W
Drop Point	DP-68	DP 68	48° 04.407' N	120° 20.789' W	Staging Area		Sno-Park	47° 57.452' N	120° 08.924' W