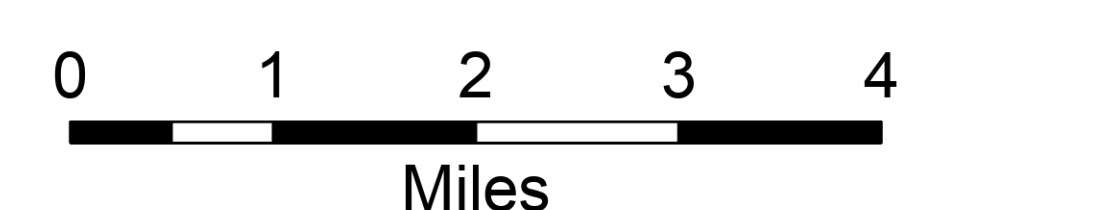


Air Ops Map

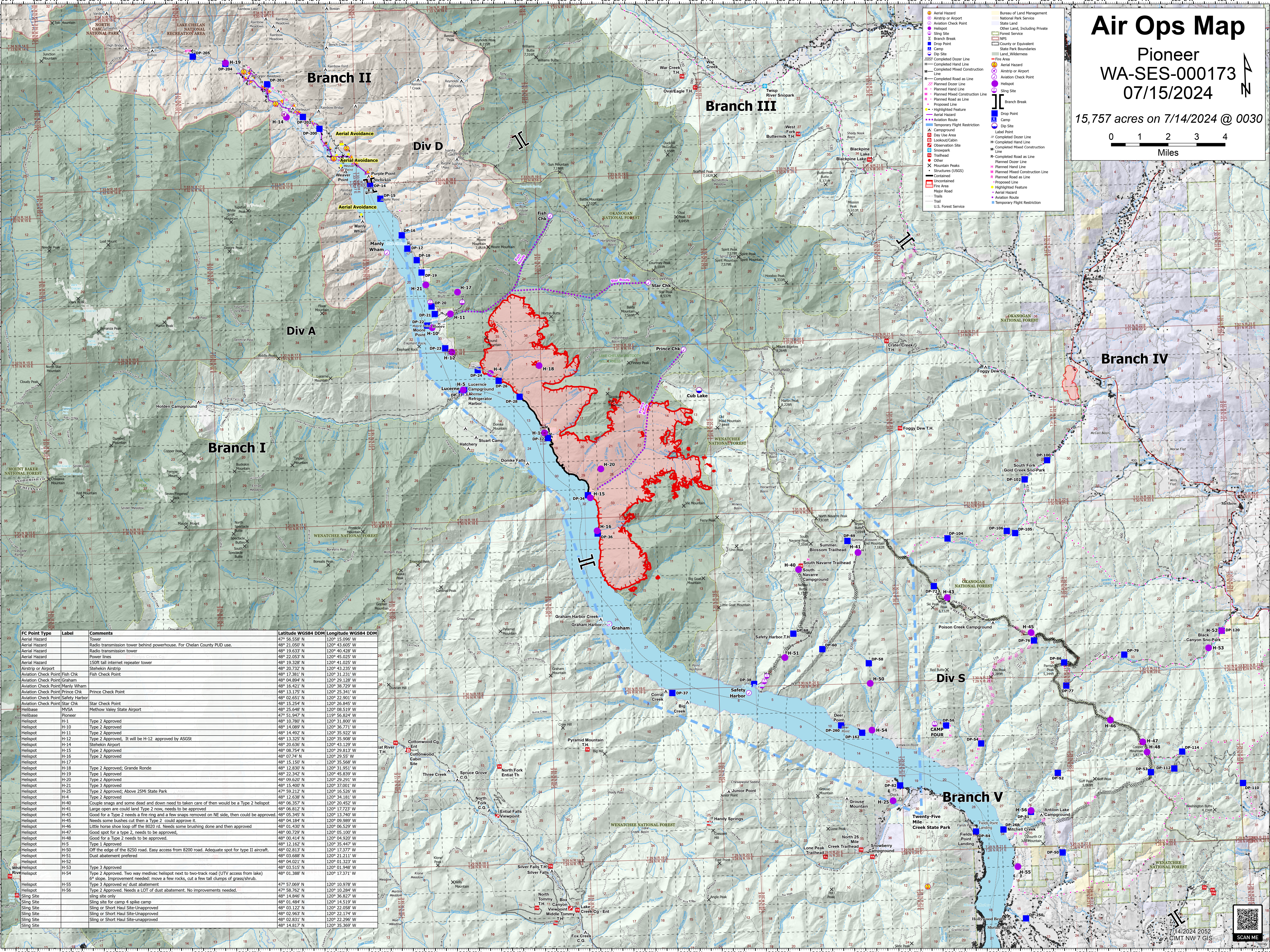
Pioneer WA-SES-000173 07/15/2024

15,757 acres on 7/14/2024 @ 0030



Legend

- Aerial Hazard
- Airstrip or Airport
- Aviation Check Point
- Helispot
- Sling Site
- Drop Point
- Camp
- Dip Site
- Completed Dozer Line
- Completed Hand Line
- Completed Mixed Construction Line
- Planned Dozer Line
- Planned Mixed Construction Line
- Planned Road as Line
- Proposed Line
- Highlighted Feature
- Aerial Hazard
- Aviation Check Point
- Helispot
- Sling Site
- Branch Break
- Drop Point
- Camp
- Dip Site
- Label Point
- Completed Dozer Line
- Completed Hand Line
- Completed Mixed Construction Line
- Planned Dozer Line
- Planned Hand Line
- Planned Mixed Construction Line
- Planned Road as Line
- Proposed Line
- Highlighted Feature
- Aerial Hazard
- Aviation Route
- Temporary Flight Restriction
- Campground
- Day Use Area
- Lookout/Cabin
- Observation Cabin
- Snowpack
- Trailhead
- Other
- Mountain Peak
- Structure (USGS)
- Contained
- Uncontained
- Major Road
- Trail
- U.S. Forest Service
- Bureau of Land Management
- National Park Service
- State Land
- Other Land, Including Private
- Forest Service
- NPS
- County or Equivalent
- State Park Boundaries
- Land Wilderness
- Fire Area
- Aerial Hazard
- Airstrip or Airport
- Aviation Check Point
- Helispot
- Sling Site
- Branch Break
- Drop Point
- Camp
- Dip Site
- Label Point
- Completed Dozer Line
- Completed Hand Line
- Completed Mixed Construction Line
- Planned Dozer Line
- Planned Hand Line
- Planned Mixed Construction Line
- Planned Road as Line
- Proposed Line
- Highlighted Feature
- Aerial Hazard
- Aviation Route
- Temporary Flight Restriction



| FC Point Type | Label | Comments | Latitude WGS84 DDM | Longitude WGS84 DDM |
|----------------------|--|---|--------------------|---------------------|
| Aerial Hazard | Tower | | 47° 56.558' N | 120° 15.096' W |
| Aerial Hazard | Radio transmission tower behind powerhouse. For Chelan County PUD use. | | 48° 21.050' N | 120° 43.605' W |
| Aerial Hazard | Radio transmission tower | | 48° 19.633' N | 120° 46.428' W |
| Aerial Hazard | Power lines | | 48° 22.053' N | 120° 45.025' W |
| Aerial Hazard | 150ft tall internet repeater tower | | 48° 19.328' N | 120° 41.025' W |
| Airstrip or Airport | Stehkin Airstrip | | 48° 20.732' N | 120° 43.235' W |
| Aviation Check Point | Fish Chk | Fish Check Point | 48° 17.381' N | 120° 31.231' W |
| Aviation Check Point | Graham | | 48° 04.894' N | 120° 29.128' W |
| Aviation Check Point | Manly Wham | | 48° 16.421' N | 120° 28.729' W |
| Aviation Check Point | Prince Chk | Prince Check Point | 48° 13.175' N | 120° 25.341' W |
| Aviation Check Point | Safety Harbor | | 48° 02.651' N | 120° 22.901' W |
| Aviation Check Point | Star Chk | Star Check Point | 48° 15.254' N | 120° 26.845' W |
| Helibase | MVSA | Methow Valley State Airport | 48° 25.648' N | 120° 08.519' W |
| Helibase | Pioneer | | 47° 51.947' N | 119° 56.824' W |
| Helispot | H-1 | Type 2 Approved | 48° 10.780' N | 120° 31.800' W |
| Helispot | H-10 | Type 2 Approved | 48° 14.089' N | 120° 36.771' W |
| Helispot | H-11 | Type 2 Approved | 48° 14.492' N | 120° 35.922' W |
| Helispot | H-12 | Type 2 Approved, It will be H-12 approved by ASGS | 48° 13.325' N | 120° 35.908' W |
| Helispot | H-14 | Stehkin Airport | 48° 20.636' N | 120° 28.729' W |
| Helispot | H-15 | Type 2 Approved | 48° 08.754' N | 120° 29.813' W |
| Helispot | H-16 | Type 2 Approved | 48° 07.74' N | 120° 29.55' W |
| Helispot | H-17 | Type 2 Approved | 48° 15.150' N | 120° 35.568' W |
| Helispot | H-18 | Type 2 Approved, Grande Ronde | 48° 12.830' N | 120° 31.951' W |
| Helispot | H-19 | Type 1 Approved | 48° 22.342' N | 120° 45.839' W |
| Helispot | H-20 | Type 2 Approved | 48° 09.620' N | 120° 29.291' W |
| Helispot | H-21 | Type 3 Approved | 48° 15.400' N | 120° 37.001' W |
| Helispot | H-25 | Type 2 Approved, Above 25MI State Park | 47° 59.212' N | 120° 16.526' W |
| Helispot | H-4 | Type 2 Approved | 48° 12.638' N | 120° 34.181' W |
| Helispot | H-40 | Couple snags and some dead and down need to taken care of then would be a Type 2 helispot | 48° 06.327' N | 120° 26.422' W |
| Helispot | H-41 | Large open area could land. Type 2 now, needs to be approved | 48° 06.812' N | 120° 17.724' W |
| Helispot | H-43 | Good for a Type 2, needs a fire ring and a few snags removed on NE side, then could be approved | 48° 05.345' N | 120° 13.740' W |
| Helispot | H-45 | Needs some bushes cut then a Type 2 could approve it. | 48° 04.184' N | 120° 09.989' W |
| Helispot | H-46 | Little horse shoe loop off the 8020 rd. Needs some brushing done and then approved | 48° 01.430' N | 120° 06.529' W |
| Helispot | H-47 | Good spot for a type 2, needs to be approved. | 48° 00.729' N | 120° 05.100' W |
| Helispot | H-48 | Good for a Type 2, needs to be approved. | 48° 00.416' N | 120° 04.920' W |
| Helispot | H-5 | Type 1 Approved | 48° 12.162' N | 120° 35.447' W |
| Helispot | H-50 | Off the edge of the 8250 road. Easy access from 8200 road. Adequate spot for type II aircraft. | 48° 02.813' N | 120° 17.377' W |
| Helispot | H-51 | Dust abatement preferred | 48° 03.688' N | 120° 21.211' W |
| Helispot | H-52 | | 48° 04.021' N | 120° 01.322' W |
| Helispot | H-53 | Type 3 Approved | 48° 01.516' N | 120° 01.948' W |
| Helispot | H-54 | Type 2 Approved. Two way medicav helispot next to two-track road (UTV access from lake) 6° slope. Improvement needed: move a few rocks, cut a few tall clumps of grass/shrub. | 48° 01.388' N | 120° 17.371' W |
| Helispot | H-55 | Type 3 Approved w/ dust abatement | 47° 57.069' N | 120° 10.978' W |
| Helispot | H-56 | Type 2 Approved. Needs a LOT of dust abatement. No improvements needed. | 47° 58.762' N | 120° 10.284' W |
| Helispot | H-57 | sling site only | 48° 14.848' N | 120° 26.827' W |
| Sling Site | | Sling site for camp 4 spike camp | 48° 01.484' N | 120° 14.519' W |
| Sling Site | | Sling or Short Haul Site-Unapproved | 48° 03.122' N | 120° 22.058' W |
| Sling Site | | Sling or Short Haul Site-Unapproved | 48° 02.963' N | 120° 22.174' W |
| Sling Site | | Sling or Short Haul Site-unapproved | 48° 02.831' N | 120° 22.296' W |
| Sling Site | | | 48° 14.817' N | 120° 35.369' W |