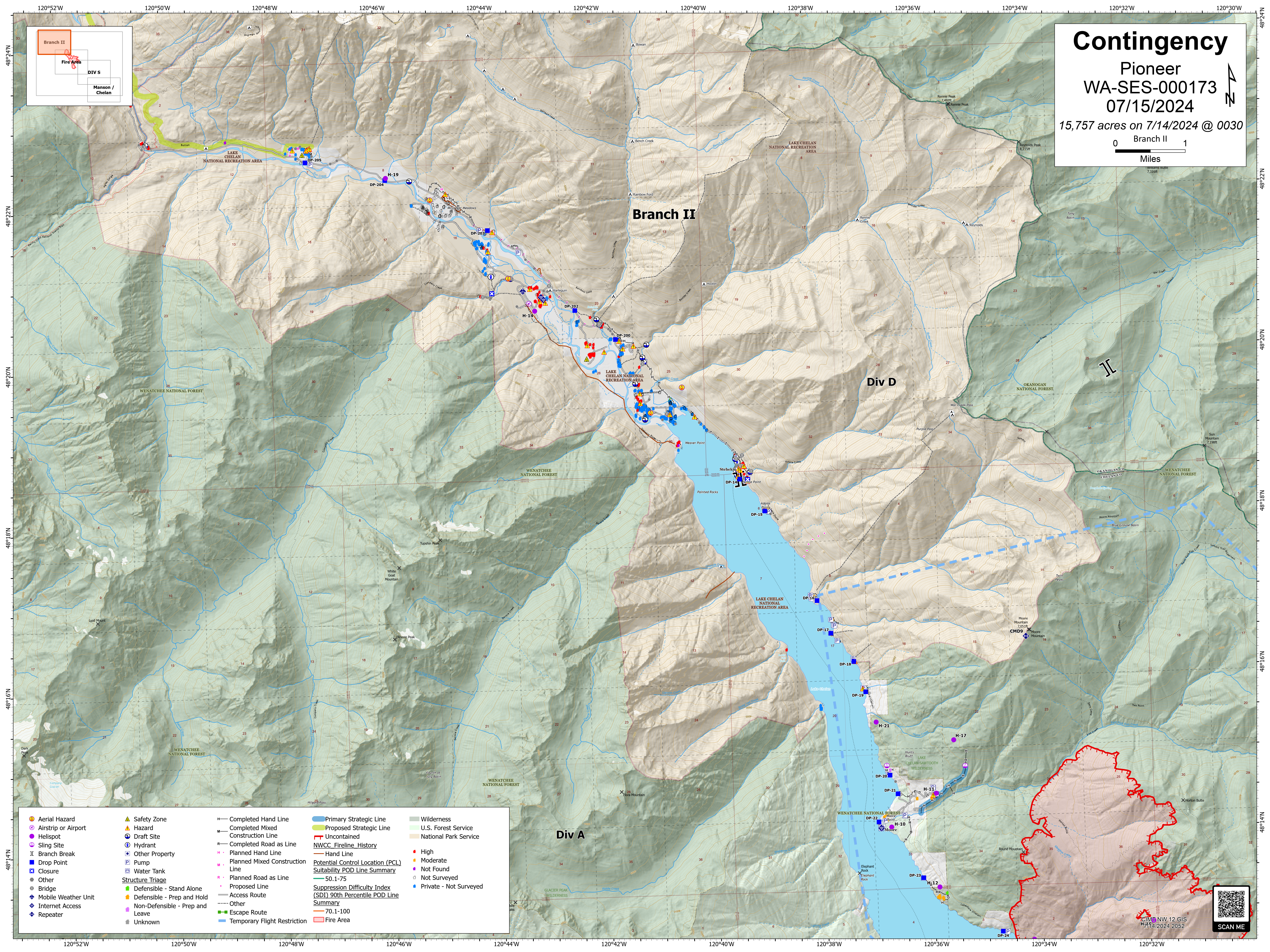
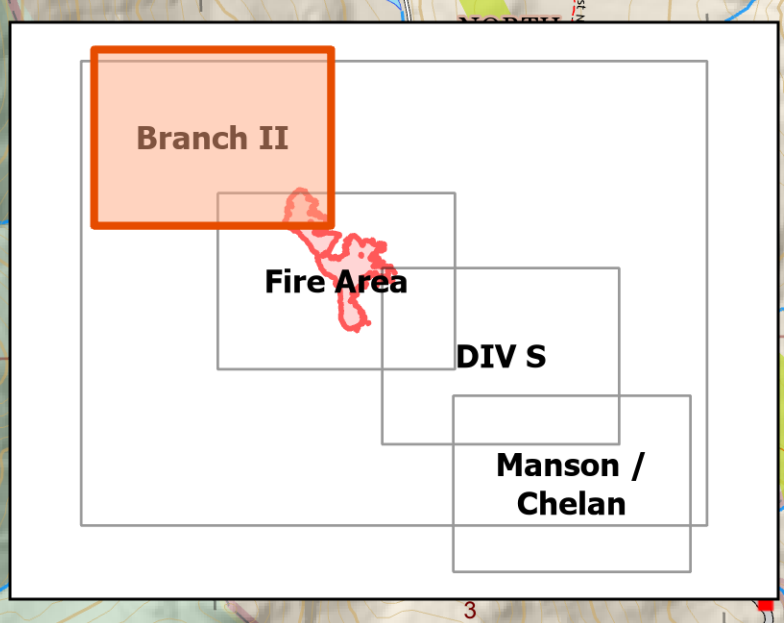


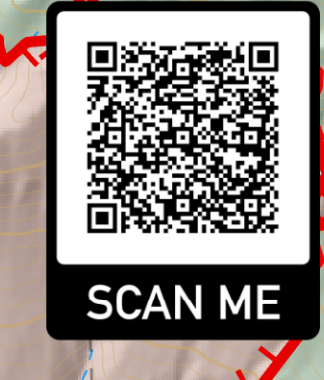
Contingency

Pioneer
WA-SES-000173
07/15/2024
15,757 acres on 7/14/2024 @ 0030

0 Branch II 1
Miles



- | | | | | |
|--|---|--|---|---|
| <ul style="list-style-type: none"> ● Aerial Hazard ✈ Airstrip or Airport ● Helispot ⊕ Sling Site ⊓ Branch Break ■ Drop Point ⊠ Closure ● Other ● Bridge ⊕ Mobile Weather Unit ⊕ Internet Access ⊕ Repeater | <ul style="list-style-type: none"> ▲ Safety Zone ▲ Hazard ▲ Draft Site ⊕ Hydrant ⊕ Other Property ⊕ Pump ⊕ Water Tank Structure Triage ■ Defensible - Stand Alone ■ Defensible - Prep and Hold ■ Non-Defensible - Prep and Leave ■ Unknown | <ul style="list-style-type: none"> — Completed Hand Line — Completed Mixed Construction Line — Completed Road as Line — Planned Hand Line — Planned Mixed Construction Line — Planned Road as Line — Proposed Line — Access Route — Other — Escape Route — Temporary Flight Restriction | <ul style="list-style-type: none"> — Primary Strategic Line — Proposed Strategic Line — Uncontained NWCC_Fireline_History — Hand Line Potential Control Location (PCL) Suitability POD Line Summary — 50.1-75 Suppression Difficulty Index (SDI) 90th Percentile POD Line Summary — 70.1-100 — Fire Area | <ul style="list-style-type: none"> ■ Wilderness ■ U.S. Forest Service ■ National Park Service ● High ● Moderate ● Not Found ○ Not Surveyed ● Private - Not Surveyed |
|--|---|--|---|---|



CIM NW 12 GIS
7/14/2024 2052