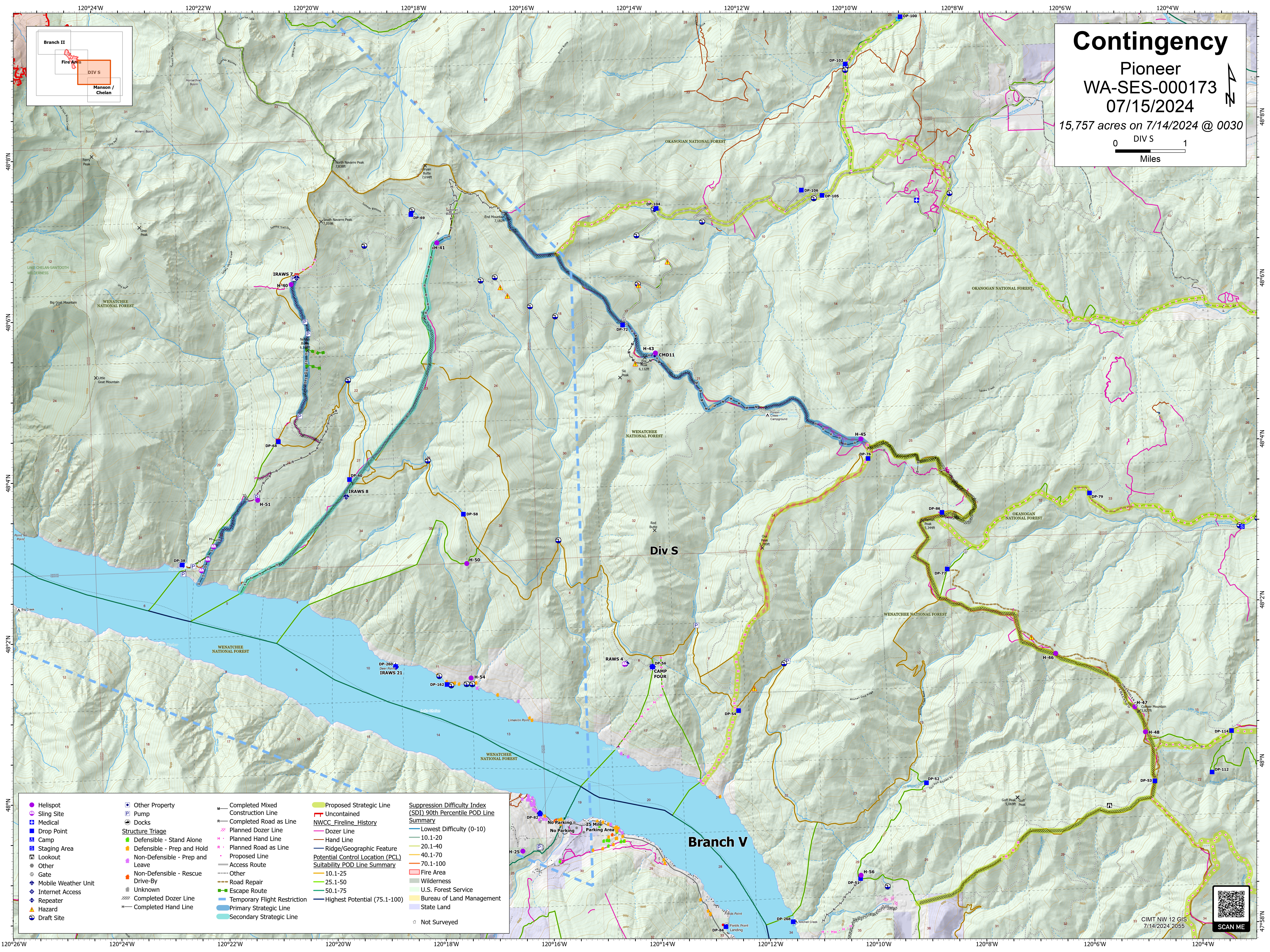
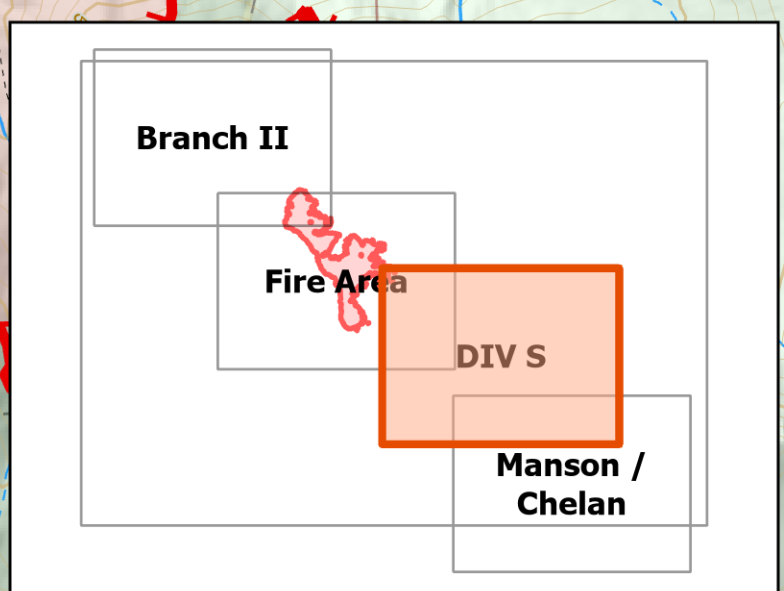


Contingency

Pioneer
WA-SES-000173
07/15/2024

15,757 acres on 7/14/2024 @ 0030



<ul style="list-style-type: none">HelispotSling SiteMedicalDrop PointCampStaging AreaLookoutOtherGateMobile Weather UnitInternet AccessRepeaterHazardDraft Site	<ul style="list-style-type: none">Other PropertyPumpDocksStructure Triage<ul style="list-style-type: none">Defensible - Stand AloneDefensible - Prep and HoldNon-Defensible - Prep and LeaveNon-Defensible - Rescue Drive-ByUnknownCompleted Dozer LineCompleted Hand Line	<ul style="list-style-type: none">Completed Mixed Construction LineCompleted Road as LinePlanned Dozer LinePlanned Hand LinePlanned Road as LineProposed LineAccess RouteOtherRoad RepairEscape RouteTemporary Flight RestrictionPrimary Strategic LineSecondary Strategic Line	<ul style="list-style-type: none">Proposed Strategic LineUncontainedNWCC Fireline_HistoryDozer LineHand LineRidge/Geographic FeaturePotential Control Location (PCL)Suitability POD Line Summary10.1-2525.1-5050.1-75Highest Potential (75.1-100)	<ul style="list-style-type: none">Suppression Difficulty Index (SDI) 90th Percentile POD Line Summary<ul style="list-style-type: none">Lowest Difficulty (0-10)10.1-2020.1-4040.1-7070.1-100Fire AreaWildernessU.S. Forest ServiceBureau of Land ManagementState LandNot Surveyed
--	---	---	--	---

