

Contingency

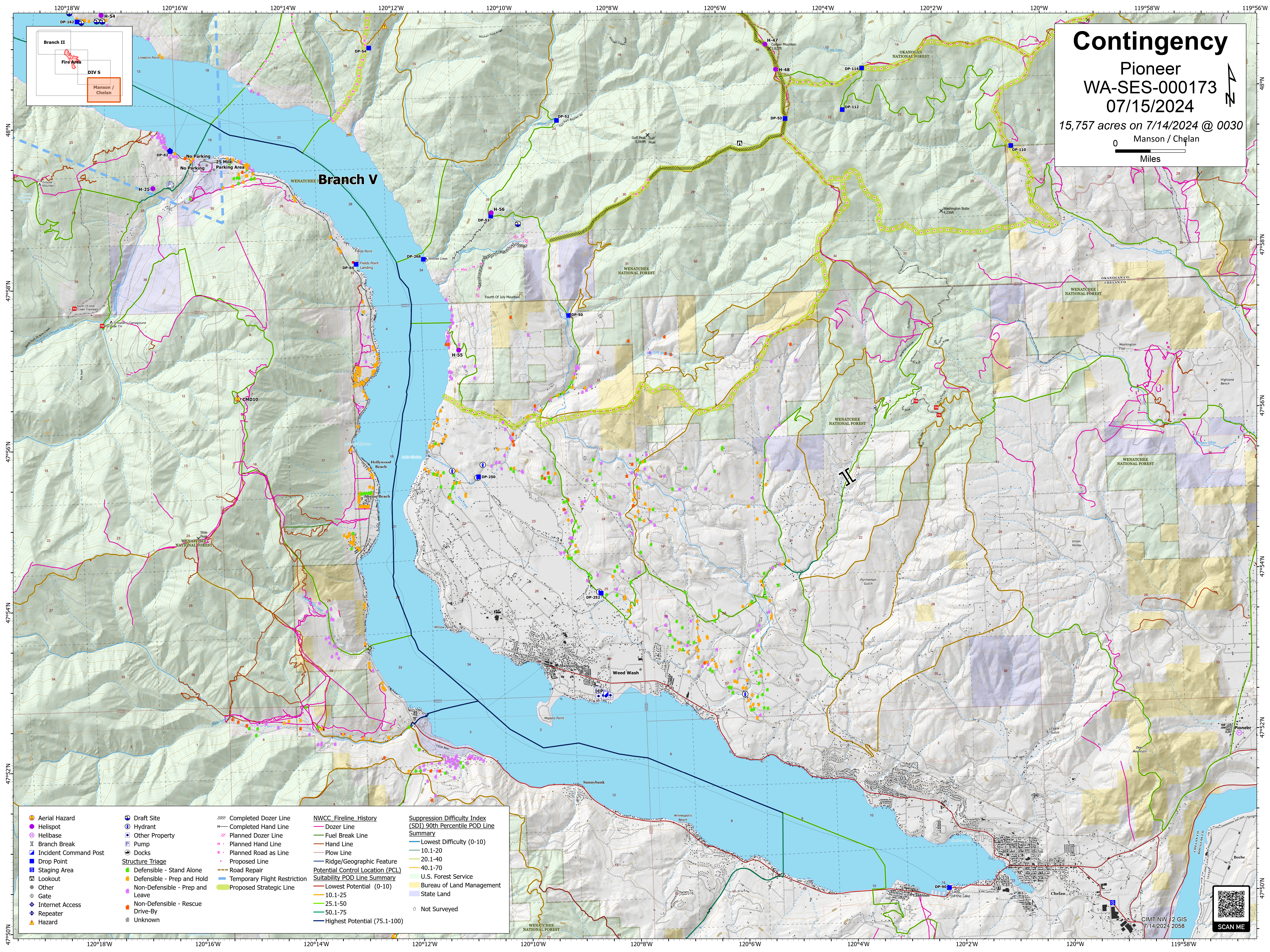
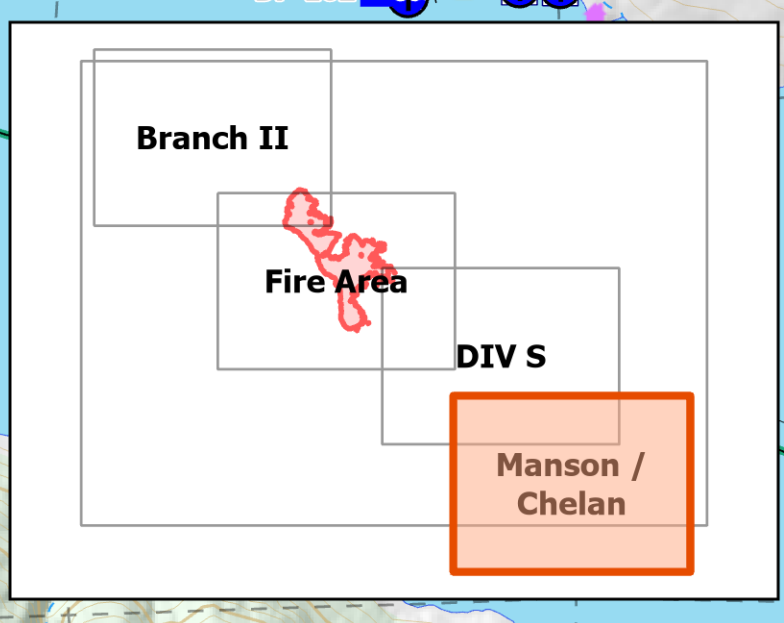
Pioneer
WA-SES-000173
07/15/2024

15,757 acres on 7/14/2024 @ 0030

Manson / Chelan

0 Miles

Miles



- Aerial Hazard
- Helispot
- Helibase
- Branch Break
- Incident Command Post
- Drop Point
- Staging Area
- Lookout
- Other
- Gate
- Internet Access
- Repeater
- Hazard
- Draft Site
- Hydrant
- Other Property
- Pump
- Docks
- Defensible - Stand Alone
- Defensible - Prep and Hold
- Non-Defensible - Prep and Leave
- Non-Defensible - Rescue
- Drive-By
- Unknown
- Completed Dozer Line
- Completed Hand Line
- Planned Dozer Line
- Planned Hand Line
- Planned Road as Line
- Proposed Line
- Road Repair
- Temporary Flight Restriction
- Proposed Strategic Line
- Dozer Line
- Fuel Break Line
- Hand Line
- Plow Line
- Ridge/Geographic Feature
- Potential Control Location (PCL) Suitability POD Line Summary
- Lowest Potential (0-10)
- 10.1-25
- 10.1-50
- 50.1-75
- Highest Potential (75.1-100)
- Lowest Difficulty (0-10)
- 10.1-20
- 20.1-40
- 40.1-70
- U.S. Forest Service
- Bureau of Land Management
- State Land
- Not Surveyed



CIMT NW 12 GIS
7/14/2024 2058