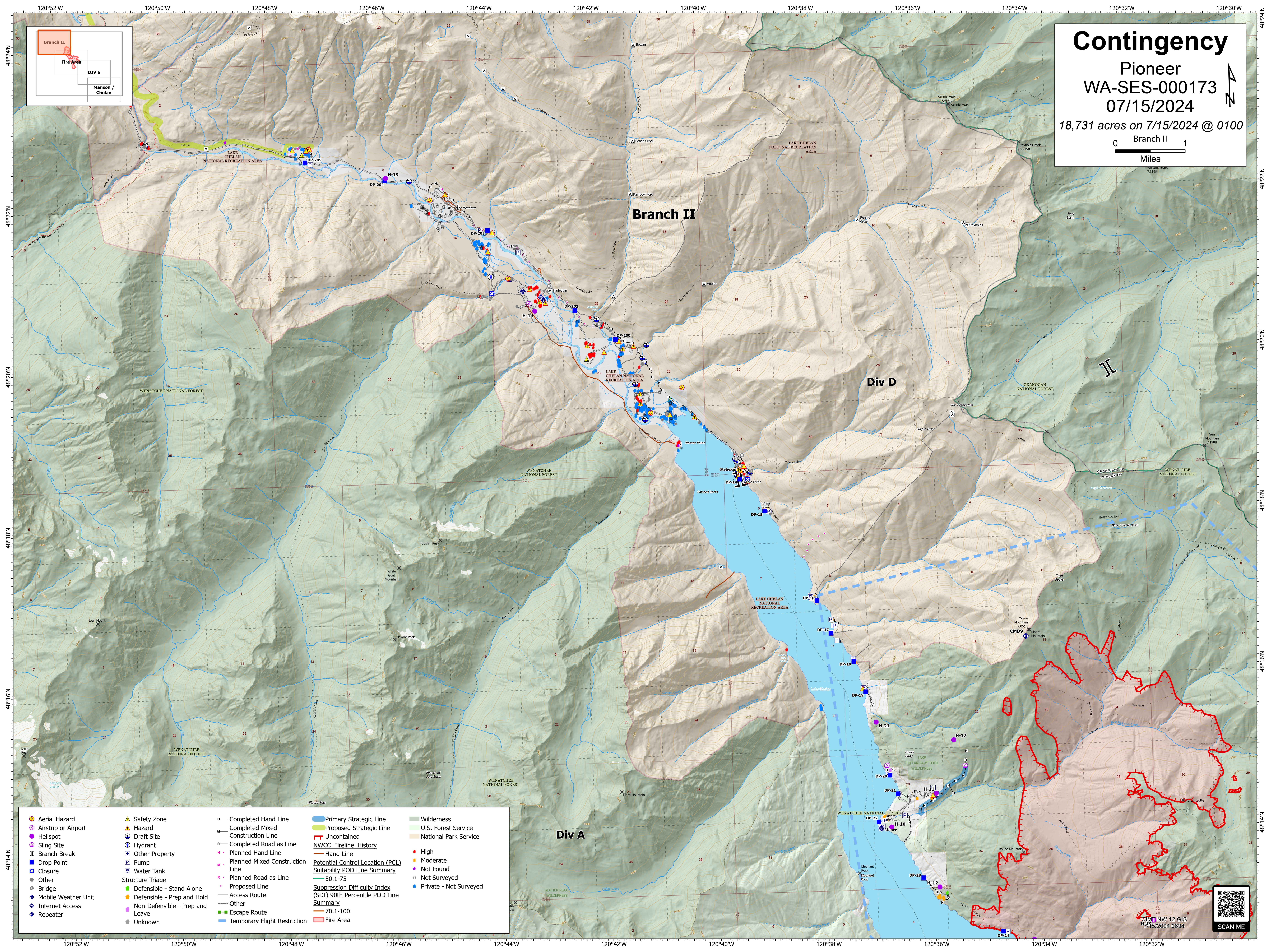
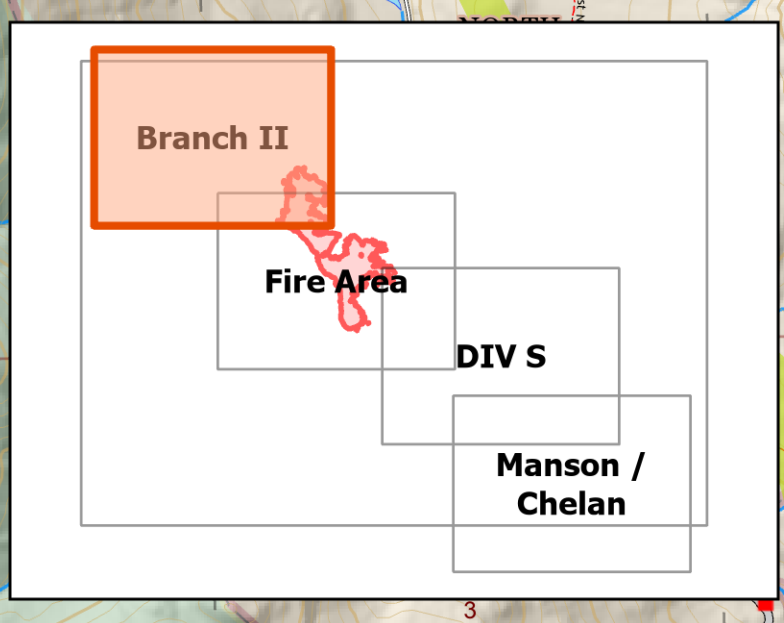


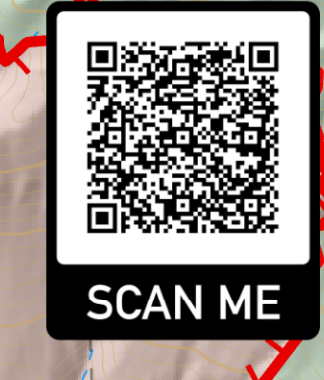
Contingency

Pioneer
 WA-SES-000173
 07/15/2024
 18,731 acres on 7/15/2024 @ 0100

0 Branch II 1
 Miles



- | | | | | |
|--|--|--|---|---|
| <ul style="list-style-type: none"> ● Aerial Hazard ✈ Airstrip or Airport ● Helispot ⊕ Sling Site ⊓ Branch Break ■ Drop Point ⊠ Closure ● Other ● Bridge ⊕ Mobile Weather Unit ⊕ Internet Access ⊕ Repeater | <ul style="list-style-type: none"> ▲ Safety Zone ▲ Hazard ▲ Draft Site ⊕ Hydrant ⊕ Other Property ⊕ Pump ⊕ Water Tank Structure Triage ■ Defensible - Stand Alone ■ Defensible - Prep and Hold ■ Non-Defensible - Prep and Leave ■ Unknown | <ul style="list-style-type: none"> — Completed Hand Line — Completed Mixed Construction Line — Completed Road as Line — Planned Hand Line — Planned Mixed Construction Line — Planned Road as Line — Proposed Line — Access Route — Other — Escape Route — Temporary Flight Restriction | <ul style="list-style-type: none"> — Primary Strategic Line — Proposed Strategic Line — Uncontained NWCC_Fireline_History — Hand Line Potential Control Location (PCL) Suitability POD Line Summary 50.1-75 Suppression Difficulty Index (SDI) 90th Percentile POD Line Summary 70.1-100 Fire Area | <ul style="list-style-type: none"> — Wilderness — U.S. Forest Service — National Park Service ● High ● Moderate ● Not Found ○ Not Surveyed ● Private - Not Surveyed |
|--|--|--|---|---|



CIM NW 12 GIS
 7/15/2024 0634