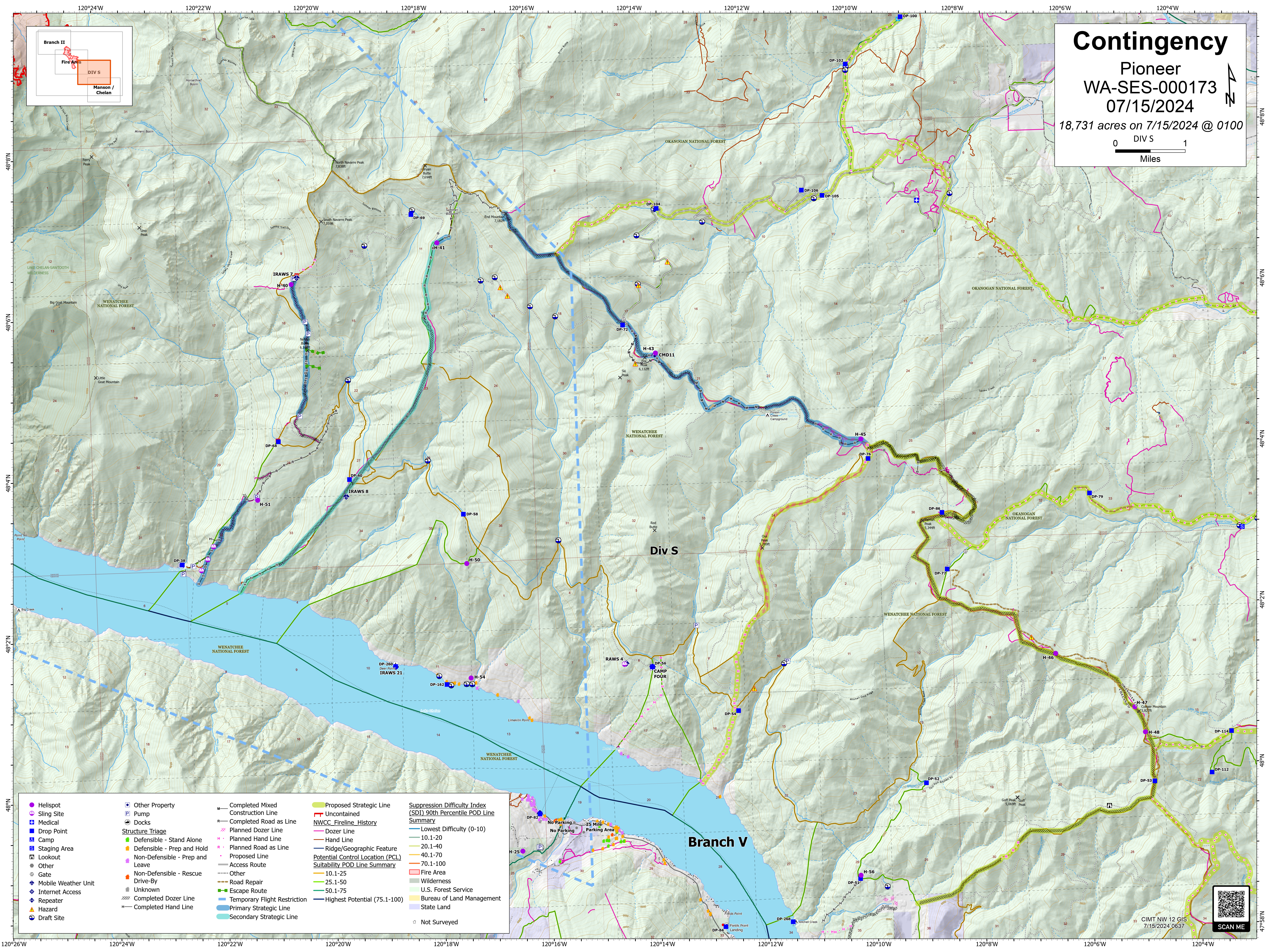
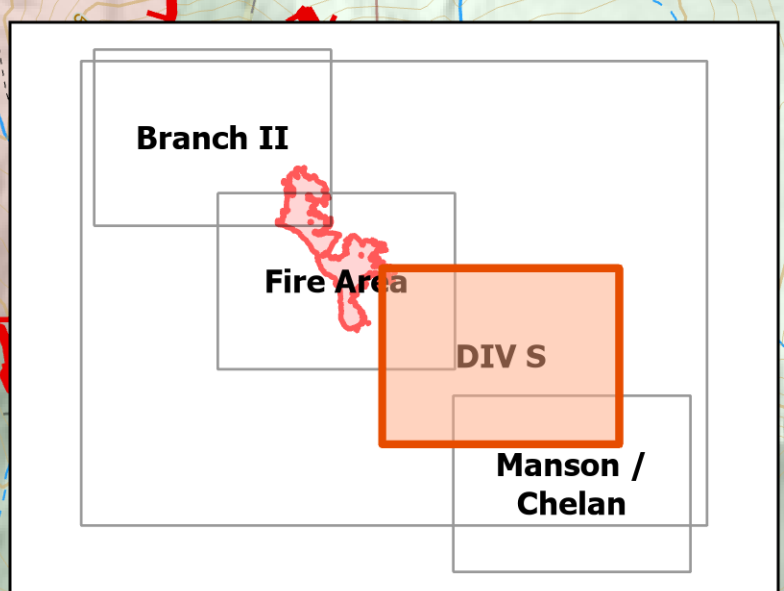


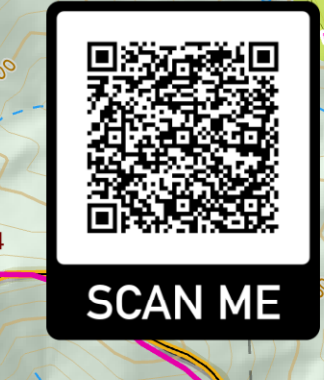
# Contingency

Pioneer  
 WA-SES-000173  
 07/15/2024  
 18,731 acres on 7/15/2024 @ 0100

0 DIVS 1  
 Miles



<ul style="list-style-type: none"> <li>● Helispot</li> <li>⊕ Sling Site</li> <li>⚕ Medical</li> <li>⬇ Drop Point</li> <li>⛴ Camp</li> <li>⊠ Staging Area</li> <li>⊠ Lookout</li> <li>⊠ Other</li> <li>⊠ Gate</li> <li>⊠ Mobile Weather Unit</li> <li>⊠ Internet Access</li> <li>⊠ Repeater</li> <li>⚠ Hazard</li> <li>⊠ Draft Site</li> </ul>	<ul style="list-style-type: none"> <li>⊠ Other Property</li> <li>⊠ Pump</li> <li>⊠ Docks</li> </ul> <p><b>Structure Triage</b></p> <ul style="list-style-type: none"> <li>⬆ Defensible - Stand Alone</li> <li>⬆ Defensible - Prep and Hold</li> <li>⬆ Non-Defensible - Prep and Leave</li> <li>⬆ Non-Defensible - Rescue Drive-By</li> <li>⬆ Unknown</li> <li>⊠ Completed Dozer Line</li> <li>⊠ Completed Hand Line</li> </ul>	<ul style="list-style-type: none"> <li>— Completed Mixed Construction Line</li> <li>— Completed Road as Line</li> <li>— Planned Dozer Line</li> <li>— Planned Hand Line</li> <li>— Planned Road as Line</li> <li>— Proposed Line</li> <li>— Access Route</li> <li>— Other</li> <li>— Road Repair</li> <li>— Escape Route</li> <li>— Temporary Flight Restriction</li> <li>— Primary Strategic Line</li> <li>— Secondary Strategic Line</li> </ul>	<ul style="list-style-type: none"> <li>— Proposed Strategic Line</li> <li>— Uncontained</li> <li>— NWCC Fireline_History</li> <li>— Dozer Line</li> <li>— Hand Line</li> <li>— Ridge/Geographic Feature</li> <li>— Potential Control Location (PCL)</li> <li>— Suitability POD Line Summary</li> <li>— 10.1-25</li> <li>— 25.1-50</li> <li>— 50.1-75</li> <li>— Highest Potential (75.1-100)</li> </ul>	<p><b>Suppression Difficulty Index (SDI) 90th Percentile POD Line Summary</b></p> <ul style="list-style-type: none"> <li>— Lowest Difficulty (0-10)</li> <li>— 10.1-20</li> <li>— 20.1-40</li> <li>— 40.1-70</li> <li>— 70.1-100</li> <li>— Fire Area</li> <li>— Wilderness</li> <li>— U.S. Forest Service</li> <li>— Bureau of Land Management</li> <li>— State Land</li> <li>○ Not Surveyed</li> </ul>
---	--	---	---	--



CIMT NW 12 GIS  
 7/15/2024 0637