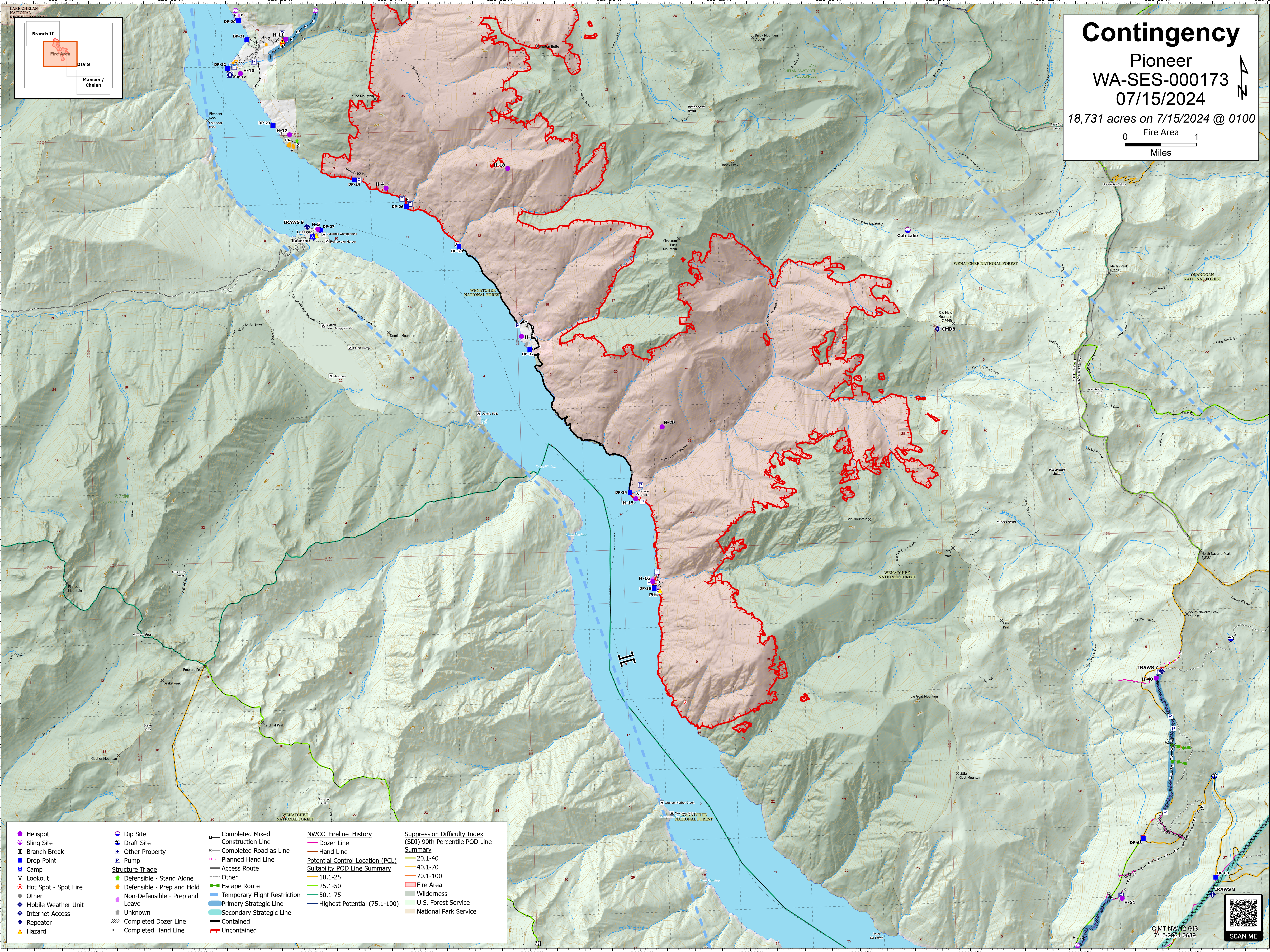
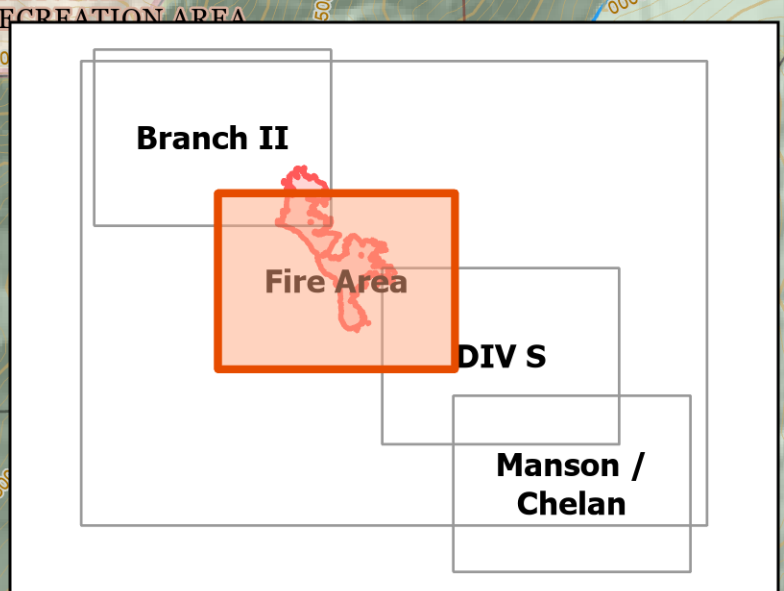


Contingency

Pioneer
 WA-SES-000173
 07/15/2024
 18,731 acres on 7/15/2024 @ 0100

0 Fire Area 1
 Miles



<ul style="list-style-type: none"> Helispot Sling Site Branch Break Drop Point Camp Lookout Hot Spot - Spot Fire Other Mobile Weather Unit Internet Access Repeater Hazard 	<ul style="list-style-type: none"> Dip Site Draft Site Other Property Pump <p>Structure Triage</p> <ul style="list-style-type: none"> Defensible - Stand Alone Defensible - Prep and Hold Non-Defensible - Prep and Leave Unknown Completed Dozer Line Completed Hand Line 	<ul style="list-style-type: none"> Completed Mixed Construction Line Completed Road as Line Planned Hand Line Access Route Other Escape Route Temporary Flight Restriction Primary Strategic Line Secondary Strategic Line Contained Uncontained 	<p>NWCC Fireline History</p> <ul style="list-style-type: none"> Dozer Line Hand Line <p>Potential Control Location (PCL) Suitability POD Line Summary</p> <ul style="list-style-type: none"> 10.1-25 25.1-50 50.1-75 Highest Potential (75.1-100) 	<p>Suppression Difficulty Index (SDI) 90th Percentile POD Line Summary</p> <ul style="list-style-type: none"> 20.1-40 40.1-70 70.1-100 <ul style="list-style-type: none"> Fire Area Wilderness U.S. Forest Service National Park Service
--	---	---	---	--



CIMT NW 512 GIS
 7/15/2024 0639