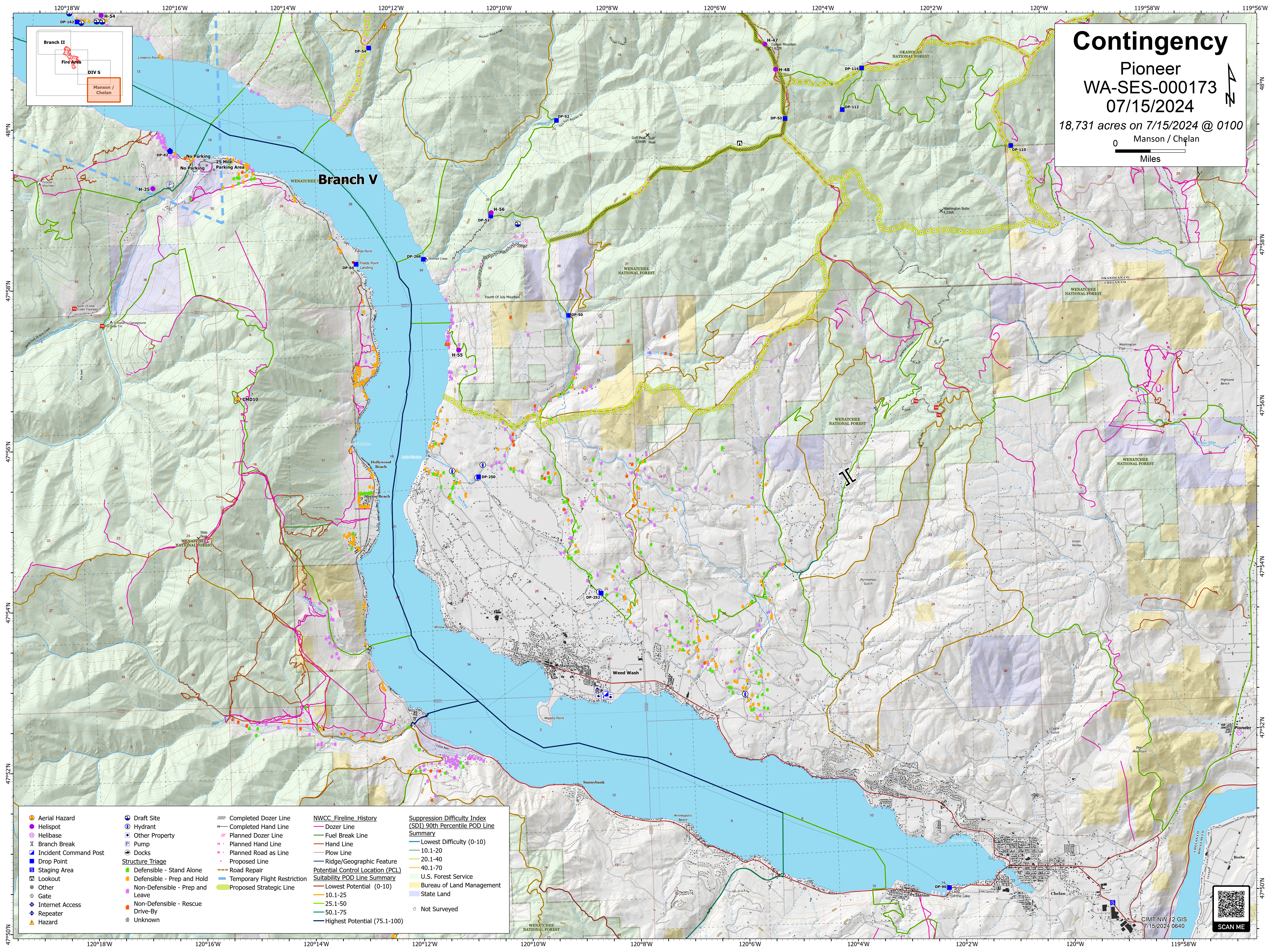
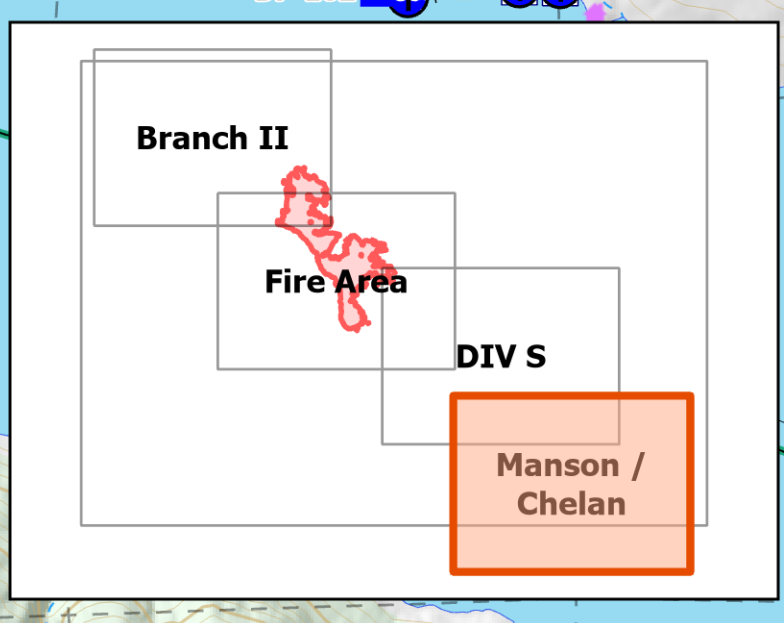


Contingency

Pioneer
 WA-SES-000173
 07/15/2024
 18,731 acres on 7/15/2024 @ 0100
 Manson / Chelan

0 Miles



<ul style="list-style-type: none"> ● Aerial Hazard ● Helispot Ⓜ Helibase Ⓜ Branch Break Ⓜ Incident Command Post Ⓜ Drop Point Ⓜ Staging Area Ⓜ Lookout ● Other Ⓜ Gate Ⓜ Internet Access Ⓜ Repeater Ⓜ Hazard 	<ul style="list-style-type: none"> Ⓜ Draft Site Ⓜ Hydrant Ⓜ Other Property Ⓜ Pump Ⓜ Docks <p>Structure Triage</p> <ul style="list-style-type: none"> ■ Defensible - Stand Alone ■ Defensible - Prep and Hold ■ Non-Defensible - Prep and Leave ■ Non-Defensible - Rescue ■ Drive-By ■ Unknown 	<ul style="list-style-type: none"> Ⓜ Completed Dozer Line Ⓜ Completed Hand Line Ⓜ Planned Dozer Line Ⓜ Planned Hand Line Ⓜ Planned Road as Line Ⓜ Proposed Line Ⓜ Road Repair Ⓜ Temporary Flight Restriction Ⓜ Proposed Strategic Line 	<p>NWCC Fireline_History</p> <ul style="list-style-type: none"> Ⓜ Dozer Line Ⓜ Fuel Break Line Ⓜ Hand Line Ⓜ Plow Line Ⓜ Ridge/Geographic Feature <p>Potential Control Location (PCL) Suitability POD Line Summary</p> <ul style="list-style-type: none"> Ⓜ Lowest Potential (0-10) Ⓜ 10.1-25 Ⓜ 25.1-50 Ⓜ 50.1-75 Ⓜ Highest Potential (75.1-100) 	<p>Suppression Difficulty Index (SDI) 90th Percentile POD Line Summary</p> <ul style="list-style-type: none"> Ⓜ Lowest Difficulty (0-10) Ⓜ 10.1-20 Ⓜ 20.1-40 Ⓜ 40.1-70 Ⓜ U.S. Forest Service Ⓜ Bureau of Land Management Ⓜ State Land Ⓜ Not Surveyed
--	---	--	--	--



CIMT NW 12 GIS
 7/15/2024 0640