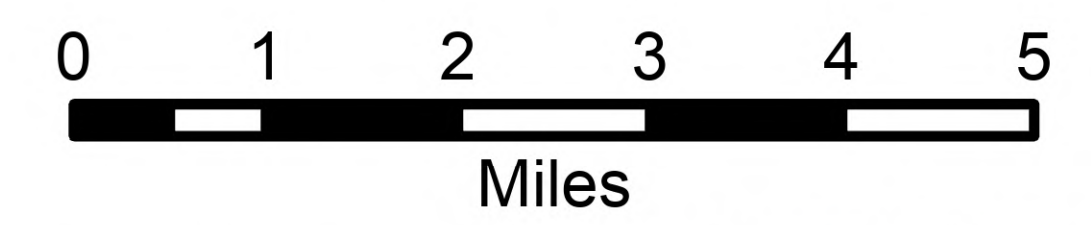


Evacuation Map

Pioneer
WA-SES-000173

07/15/2024

18,731 acres on 7/15/2024 @ 0100



Disclaimer:
While NW IMT12 makes every effort to represent the data shown on these maps as completely and accurately as possible, no warranty is given, expressed or implied, as to the accuracy, reliability, or completeness of these data. In addition, NW IMT12 and/or other participating agencies shall not be held liable for improper or incorrect use of the data described and/or contained herein. Graphical representations provided by the use of this data does not represent any legal description of the data herein and are provided only as a general representation of the data. No indication/statement of the containment is given, expressed or implied by this product.

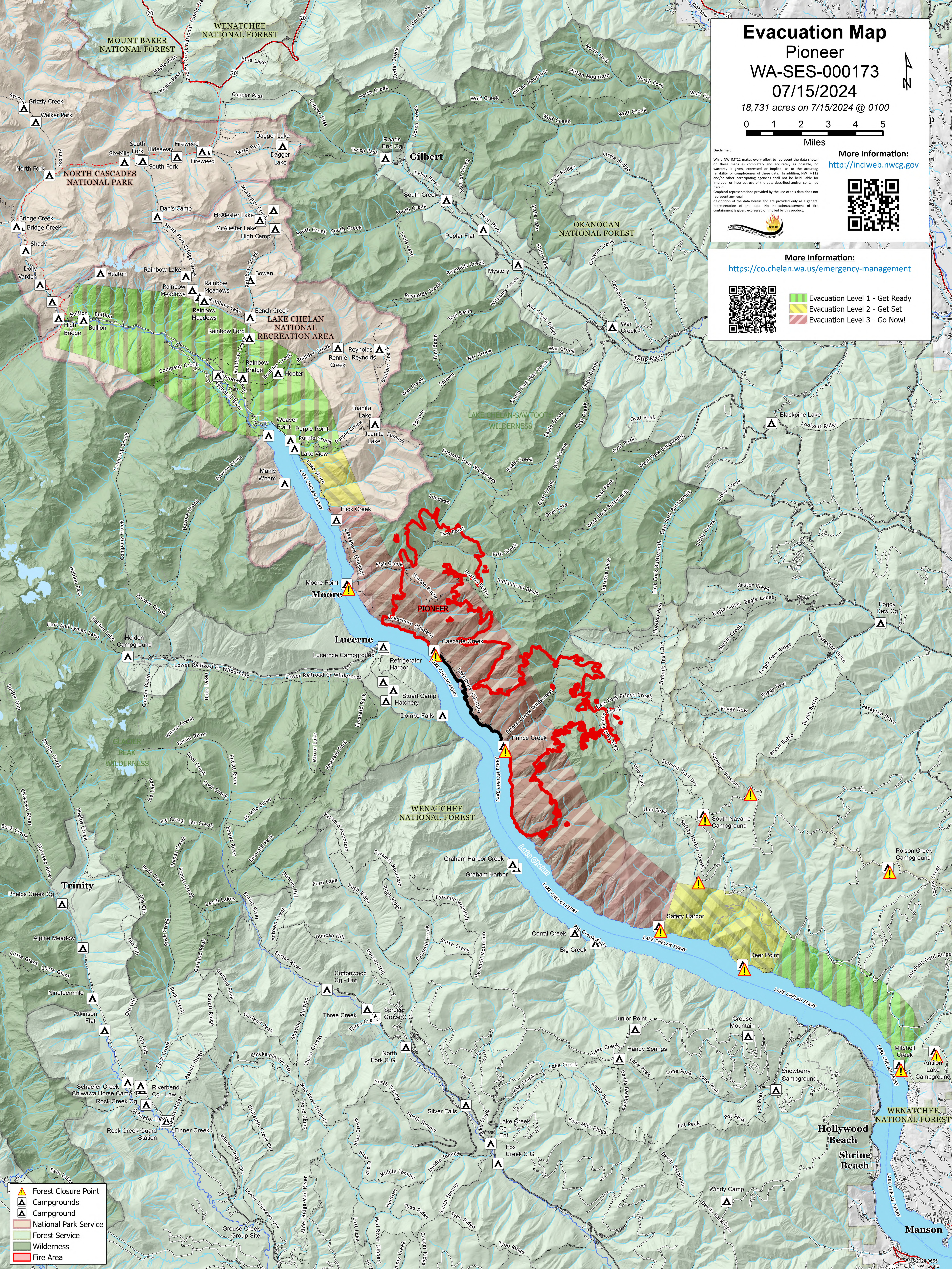
More Information:
<http://inciweb.nwcg.gov>



More Information:
<https://co.chelan.wa.us/emergency-management>



- Evacuation Level 1 - Get Ready
- Evacuation Level 2 - Get Set
- Evacuation Level 3 - Go Now!



- Forest Closure Point
- Campgrounds
- Campground
- National Park Service
- Forest Service
- Wilderness
- Fire Area