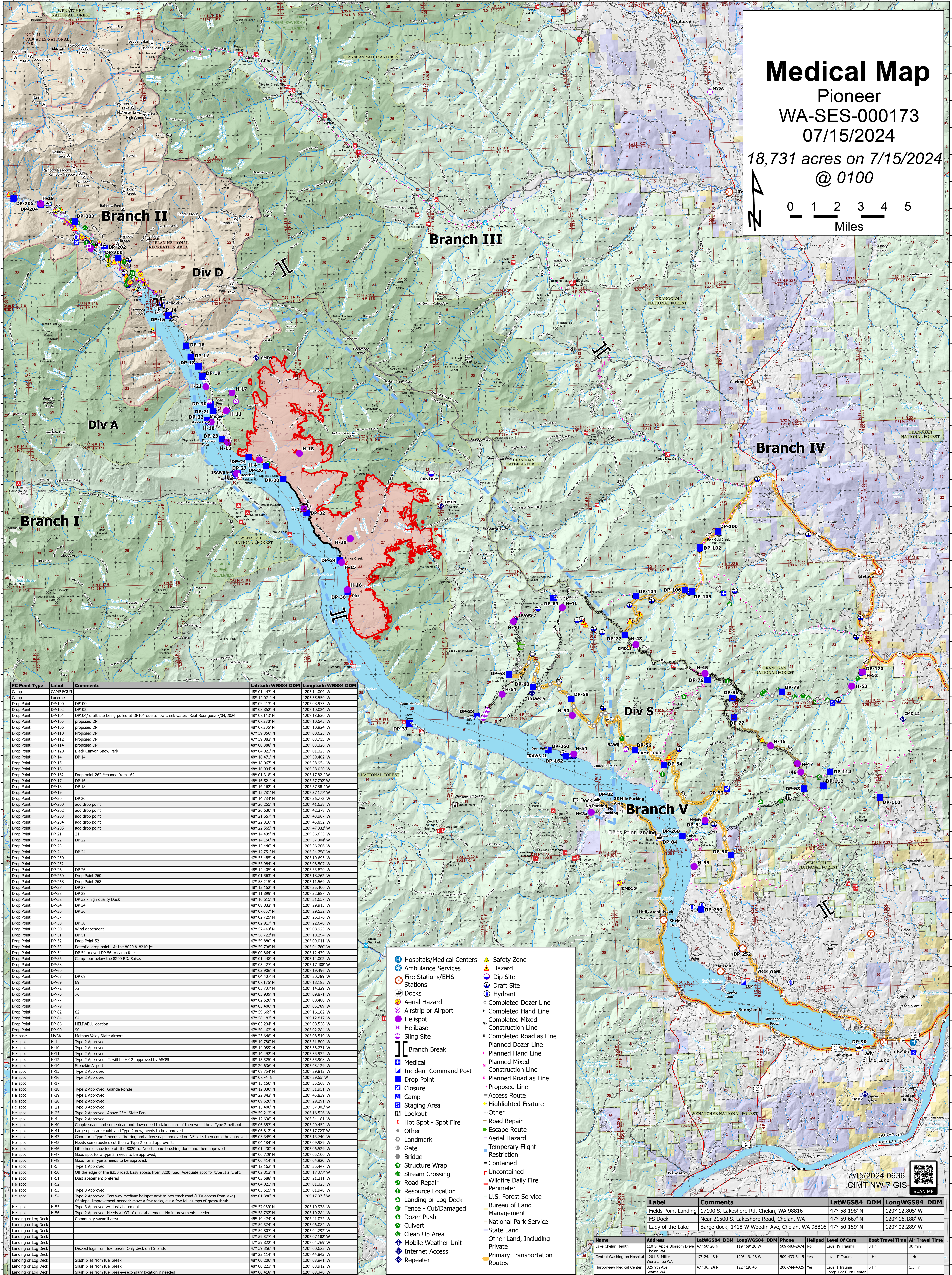
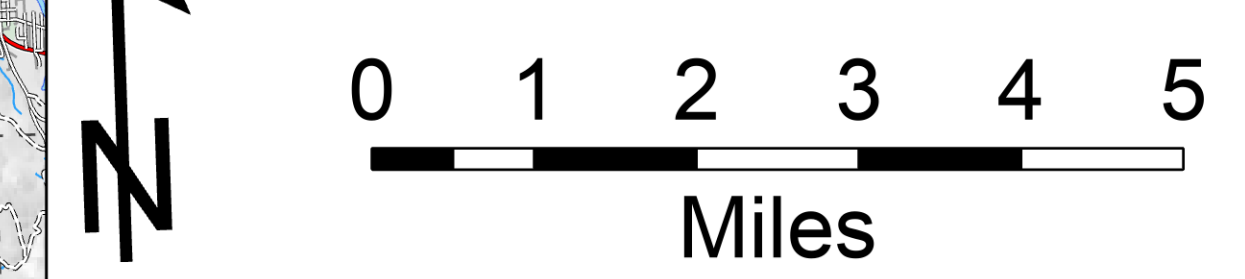


120°46'W 120°44'W 120°42'W 120°40'W 120°38'W 120°36'W 120°34'W 120°32'W 120°30'W 120°28'W 120°26'W 120°24'W 120°22'W 120°20'W 120°18'W 120°16'W 120°14'W 120°12'W 120°10'W 120°8'W 120°6'W 120°4'W 120°2'W 120°W 119°58'W 119°56'W

Medical Map

Pioneer
WA-SES-000173
07/15/2024

18,731 acres on 7/15/2024
@ 0100



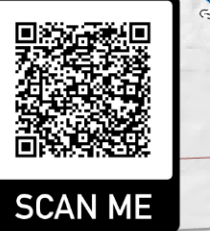
FC Point Type	Label	Comments	Latitude WGS84 DDM	Longitude WGS84 DDM
Camp	CAMP FOUR		48° 01.447' N	120° 14.004' W
Camp	Lucerne		48° 12.071' N	120° 35.550' W
Drop Point	DP-100	DP100	48° 09.413' N	120° 08.973' W
Drop Point	DP-102	DP102	48° 08.852' N	120° 10.024' W
Drop Point	DP-104	DP104 draft site being pulled at DP104 due to low creek water. Reef Rodriguez 7/04/2024	48° 07.230' N	120° 10.545' W
Drop Point	DP-105	proposed DP	48° 07.305' N	120° 10.924' W
Drop Point	DP-106	proposed DP	47° 59.356' N	120° 06.623' W
Drop Point	DP-110	Proposed DP	47° 59.882' N	120° 03.715' W
Drop Point	DP-112	Proposed DP	48° 01.388' N	120° 03.235' W
Drop Point	DP-114	proposed DP	48° 04.021' N	120° 01.323' W
Drop Point	DP-120	Black Canyon Snow Park	48° 18.471' N	120° 39.402' W
Drop Point	DP-14	DP 14	48° 18.067' N	120° 38.954' W
Drop Point	DP-15		48° 16.934' N	120° 38.030' W
Drop Point	DP-16		48° 13.187' N	120° 17.821' W
Drop Point	DP-162	Drop point 262 - change from 162	48° 16.521' N	120° 37.292' W
Drop Point	DP-17	DP 16	48° 16.162' N	120° 37.792' W
Drop Point	DP-18	DP 18	48° 15.781' N	120° 37.177' W
Drop Point	DP-19		48° 14.734' N	120° 36.772' W
Drop Point	DP-20	DP 20	48° 13.989' N	120° 13.829' W
Drop Point	DP-200	add drop point	48° 20.630' N	120° 42.378' W
Drop Point	DP-202	add drop point	48° 21.657' N	120° 43.667' W
Drop Point	DP-203	add drop point	48° 22.316' N	120° 45.852' W
Drop Point	DP-204	add drop point	48° 25.565' N	120° 47.232' W
Drop Point	DP-205	add drop point	48° 14.469' N	120° 36.235' W
Drop Point	DP-21	DP 21	48° 14.156' N	120° 37.004' W
Drop Point	DP-22	DP 22	48° 13.446' N	120° 36.206' W
Drop Point	DP-23	DP 23	48° 12.751' N	120° 34.758' W
Drop Point	DP-24	DP 24	47° 55.485' N	120° 10.695' W
Drop Point	DP-250		47° 53.388' N	120° 13.829' W
Drop Point	DP-252		48° 12.405' N	120° 33.820' W
Drop Point	DP-260	Drop Point 260	48° 01.563' N	120° 18.762' W
Drop Point	DP-268	Drop Point 268	47° 58.215' N	120° 11.569' W
Drop Point	DP-27	DP 27	48° 12.152' N	120° 35.400' W
Drop Point	DP-28	DP 28	48° 11.892' N	120° 34.867' W
Drop Point	DP-32	DP 32 - high quality Dock	48° 10.615' N	120° 31.657' W
Drop Point	DP-34	DP 34	48° 08.832' N	120° 29.915' W
Drop Point	DP-36	DP 36	48° 07.657' N	120° 29.532' W
Drop Point	DP-37		48° 02.725' N	120° 26.276' W
Drop Point	DP-38	DP 38	48° 03.917' N	120° 24.829' W
Drop Point	DP-50	Wind dependent	47° 57.449' N	120° 08.925' W
Drop Point	DP-51	DP 51	47° 58.722' N	120° 10.294' W
Drop Point	DP-52	Drop Point 52	47° 59.880' N	120° 09.011' W
Drop Point	DP-53	Potential drop point. At the 8020 & 8210.	47° 59.798' N	120° 04.780' W
Drop Point	DP-54	DP 54, moved DP 54 to camp four	48° 03.669' N	120° 12.800' W
Drop Point	DP-56	Camp four below the 8200 RD. Spike.	48° 01.448' N	120° 14.002' W
Drop Point	DP-58		48° 03.427' N	120° 17.408' W
Drop Point	DP-60		48° 03.906' N	120° 19.496' W
Drop Point	DP-68	DP 68	48° 04.407' N	120° 20.789' W
Drop Point	DP-69		48° 03.737' N	120° 18.055' W
Drop Point	DP-72	72	48° 05.707' N	120° 14.329' W
Drop Point	DP-76	76	48° 03.939' N	120° 09.871' W
Drop Point	DP-77		48° 02.528' N	120° 08.480' W
Drop Point	DP-79		48° 03.406' N	120° 05.789' W
Drop Point	DP-82	82	47° 58.669' N	120° 12.800' W
Drop Point	DP-84	84	47° 58.183' N	120° 12.817' W
Drop Point	DP-86	HELWELL location	48° 03.234' N	120° 08.538' W
Drop Point	DP-90	90	47° 50.162' N	120° 02.284' W
Helibase	MVSA	Methow Valley State Airport	48° 25.648' N	120° 08.519' W
Helispot	H-1	Type 2 Approved	48° 08.794' N	120° 29.913' W
Helispot	H-10	Type 2 Approved	48° 14.089' N	120° 36.771' W
Helispot	H-11	Type 2 Approved	48° 14.492' N	120° 35.922' W
Helispot	H-12	Type 2 Approved, It will be H-12 approved by ASGS	48° 13.325' N	120° 35.908' W
Helispot	H-14	Stehkin Airport	48° 20.636' N	120° 43.129' W
Helispot	H-15	Type 2 Approved	48° 08.794' N	120° 29.913' W
Helispot	H-16	Type 2 Approved	48° 07.74' N	120° 29.55' W
Helispot	H-17	Type 2 Approved	48° 15.150' N	120° 35.568' W
Helispot	H-18	Type 2 Approved, Grande Ronde	48° 12.830' N	120° 31.951' W
Helispot	H-19	Type 1 Approved	48° 22.342' N	120° 45.839' W
Helispot	H-20	Type 2 Approved	48° 03.669' N	120° 12.800' W
Helispot	H-21	Type 3 Approved	48° 15.400' N	120° 37.001' W
Helispot	H-25	Type 2 Approved, Above 25MI State Park	47° 59.212' N	120° 16.526' W
Helispot	H-4	Type 2 Approved	48° 12.638' N	120° 34.181' W
Helispot	H-40	Couple snags and some dead and down need to taken care of then would be a Type 2 helispot	48° 06.357' N	120° 20.452' W
Helispot	H-41	Large open area could land Type 2 now, needs to be approved	48° 03.127' N	120° 17.272' W
Helispot	H-43	Good for a Type 2 needs a fire ring and a few snags removed on NE side, then could be approved.	48° 05.345' N	120° 13.740' W
Helispot	H-45	Needs some bushes cut then a Type 2 could approve it.	48° 04.184' N	120° 09.989' W
Helispot	H-46	Little horse shoe loop off the 8020 rd. Needs some brushing done and then approved	48° 01.430' N	120° 06.529' W
Helispot	H-47	Good spot for a Type 2, needs to be approved,	48° 03.729' N	120° 05.100' W
Helispot	H-48	Good for a Type 2, needs to be approved.	48° 03.115' N	120° 04.820' W
Helispot	H-5	Type 1 Approved	48° 12.162' N	120° 35.447' W
Helispot	H-50	Off the edge of the 8250 road. Easy access from 8200 road. Adequate spot for type II aircraft.	48° 02.813' N	120° 17.377' W
Helispot	H-51	Dust abatement preferred	48° 03.688' N	120° 21.211' W
Helispot	H-52		48° 04.021' N	120° 01.323' W
Helispot	H-53	Type 3 Approved	48° 03.515' N	120° 01.948' W
Helispot	H-54	Type 2 Approved. Two way medic helispot next to two-track road (UTV access from lake) 6° slope. Improvement needed: move a few rocks, cut a few tall clumps of grass/shrub.	48° 01.388' N	120° 17.371' W
Helispot	H-55	Type 3 Approved w/ dust abatement	47° 57.069' N	120° 19.978' W
Helispot	H-56	Type 2 Approved. Needs a LOT of dust abatement. No improvements needed.	48° 19.474' N	120° 41.073' W
Landing or Log Deck		Community sawmill area	47° 59.374' N	120° 06.082' W
Landing or Log Deck		Decked logs from fuel break. Only deck on FS lands	47° 59.807' N	120° 04.792' W
Landing or Log Deck			47° 59.377' N	120° 07.182' W
Landing or Log Deck			47° 59.627' N	120° 04.792' W
Landing or Log Deck			47° 59.356' N	120° 06.623' W
Landing or Log Deck			48° 22.114' N	120° 44.843' W
Landing or Log Deck		Slash piles from fuel break	48° 00.206' N	120° 03.941' W
Landing or Log Deck		Slash piles from fuel break	48° 00.223' N	120° 03.912' W
Landing or Log Deck		Slash piles from fuel break - secondary location if needed	48° 00.418' N	120° 03.340' W

- Hospitals/Medical Centers
- Ambulance Services
- Fire Stations/EMS Stations
- Docks
- Airstrip or Airport
- Helispot
- Helibase
- Sling Site
- Branch Break
- Medical
- Incident Command Post
- Drop Point
- Closure
- Camp
- Staging Area
- Looking Out
- Hot Spot - Spot Fire
- Other
- Landmark
- Gate
- Stream Crossing
- Road Repair
- Resource Location
- Fence - Cut/Damaged
- Dozer Push
- Culvert
- Clean Up Area
- Mobile Weather Unit
- Internet Access
- Repeater
- Safety Zone
- Hazard
- Dip Site
- Draft Site
- Hydrant
- Completed Dozer Line
- Completed Hand Line
- Completed Mixed Construction Line
- Completed Road as Line
- Planned Dozer Line
- Planned Hand Line
- Planned Mixed Construction Line
- Planned Road as Line
- Proposed Line
- Access Route
- Highlighted Feature
- Other
- Road Repair
- Escape Route
- Aerial Hazard
- Temporary Flight Restriction
- Contained
- Uncontained
- Wildfire Daily Fire Perimeter
- U.S. Forest Service
- Bureau of Land Management
- National Park Service
- State Land
- Other Land, Including Private
- Primary Transportation Routes

Label	Comments	LatWGS84 DDM	LongWGS84 DDM
Fields Point Landing	17100 S. Lakeshore Rd, Chelan, WA 98816	47° 58.198' N	120° 12.805' W
FS Dock	Near 21500 S. Lakeshore Road, Chelan, WA	47° 59.667' N	120° 16.188' W
Lady of the Lake	Barge dock; 1418 W Woodin Ave, Chelan, WA 98816	47° 50.159' N	120° 02.289' W

Name	Address	LatWGS84 DDM	LongWGS84 DDM	Phone	Helipad	Level Of Care	Boat Travel Time	Air Travel Time
Lake Chelan Health	110 S. Apple Blossom Drive Chelan WA	47° 50' 20" N	119° 59' 20" W	509-683-2474	No	Level IV Trauma	3 Hr	30 min
Central Washington Hospital	1201 S. Miller Wenatchee WA	47° 24.43' N	120° 19.28' W	509-433-3115	Yes	Level II Trauma	4 Hr	1 Hr
Harborview Medical Center	325 9th Ave Seattle WA	47° 36.24' N	122° 19.45' W	206-744-4025	Yes	Level I Trauma (Level I Trauma Center)	6 Hr	1.5 Hr

7/15/2024 0636
CIMT NW 7 GIS



120°48'W 120°46'W 120°44'W 120°42'W 120°40'W 120°38'W 120°36'W 120°34'W 120°32'W 120°30'W 120°28'W 120°26'W 120°24'W 120°22'W 120°20'W 120°18'W 120°16'W 120°14'W 120°12'W 120°10'W 120°8'W 120°6'W 120°4'W 120°2'W 120°W 119°58'W 119°56'W