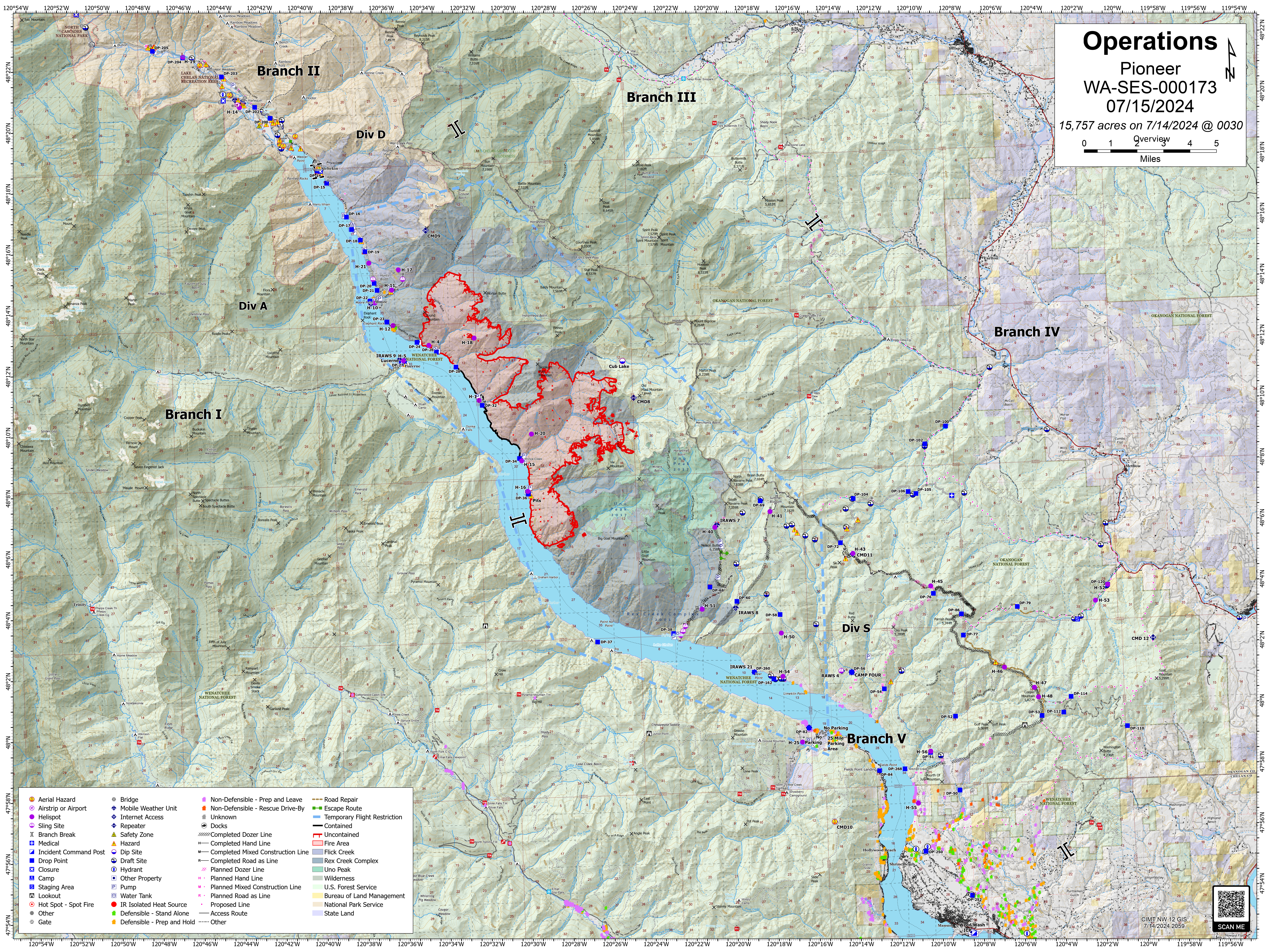
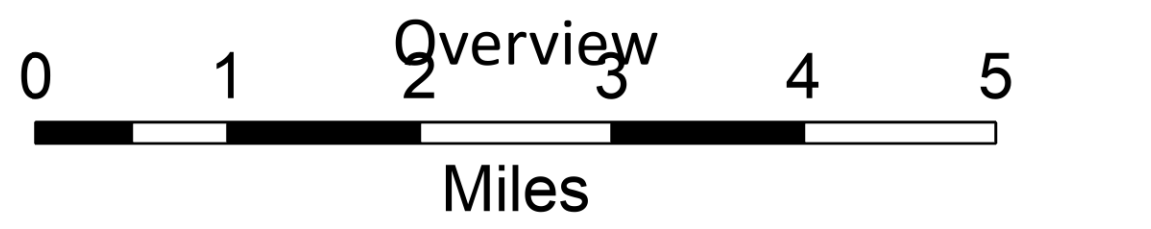


Operations

Pioneer
WA-SES-000173
07/15/2024

15,757 acres on 7/14/2024 @ 0030



- | | | | |
|-------------------------|------------------------------|-------------------------------------|--------------------------------|
| ● Aerial Hazard | ● Bridge | ● Non-Defensible - Prep and Leave | — Road Repair |
| ⊕ Airstrip or Airport | ● Mobile Weather Unit | ● Non-Defensible - Rescue Drive-By | — Escape Route |
| ● Helispot | ◆ Internet Access | ● Unknown | — Temporary Flight Restriction |
| ⊕ Sling Site | ▲ Repeater | ⊕ Docks | — Contained |
| ⊕ Branch Break | ▲ Safety Zone | ⊕ Completed Dozer Line | — Uncontained |
| ⊕ Medical | ▲ Hazard | — Completed Hand Line | — Fire Area |
| ⊕ Incident Command Post | ▲ Dip Site | — Completed Mixed Construction Line | — Flick Creek |
| ⊕ Draft Site | ⊕ Hydrant | — Completed Road as Line | — Rex Creek Complex |
| ⊕ Closure | ⊕ Other Property | — Planned Dozer Line | — Uno Peak |
| ⊕ Staging Area | ⊕ Pump | — Planned Hand Line | — Wilderness |
| ⊕ Lookout | ⊕ Water Tank | — Planned Mixed Construction Line | — U.S. Forest Service |
| ● Hot Spot - Spot Fire | ● IR Isolated Heat Source | — Proposed Line | — Bureau of Land Management |
| ● Other | ● Defensible - Stand Alone | — Access Route | — National Park Service |
| ● Gate | ● Defensible - Prep and Hold | — Other | — State Land |

