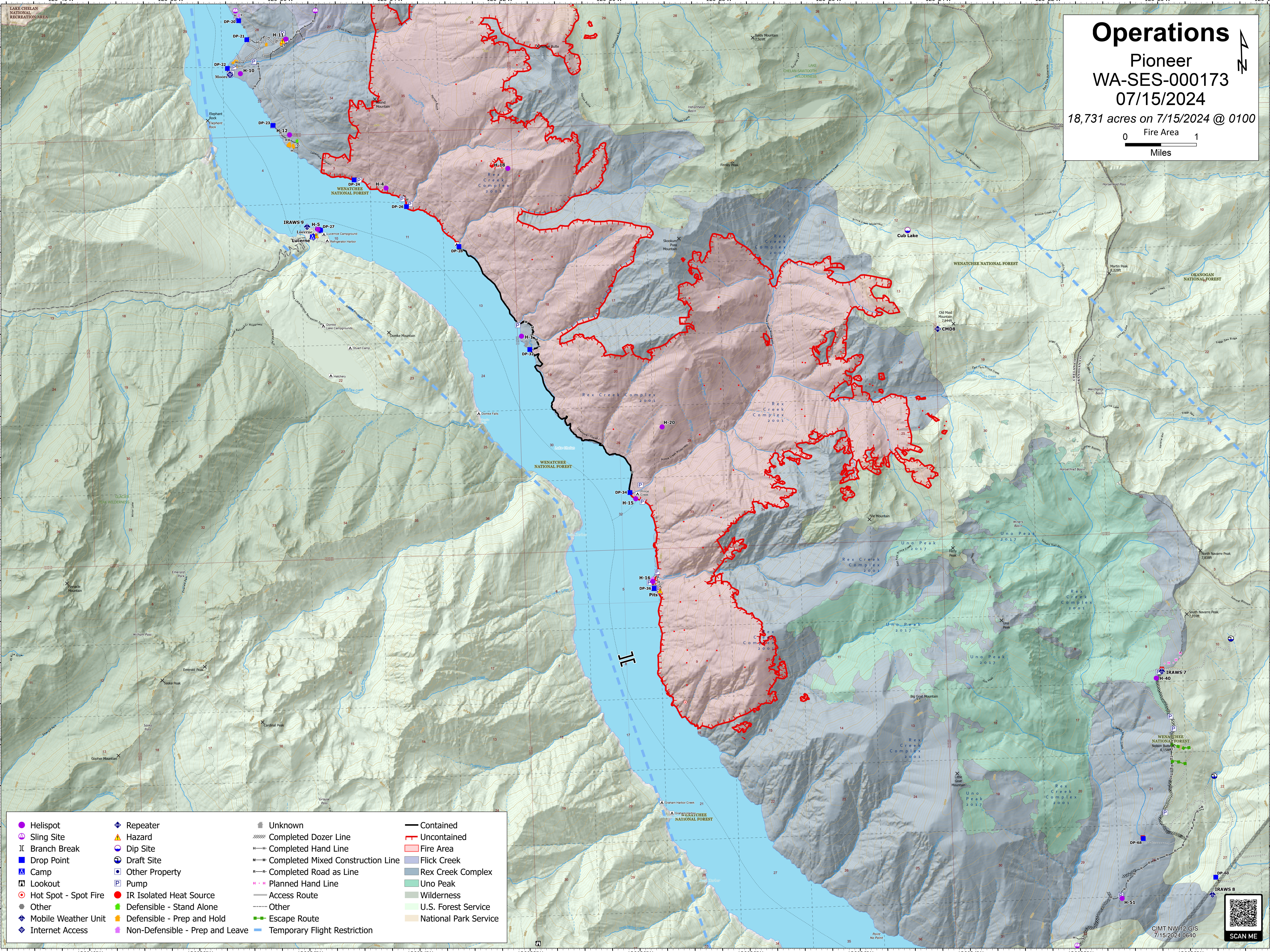
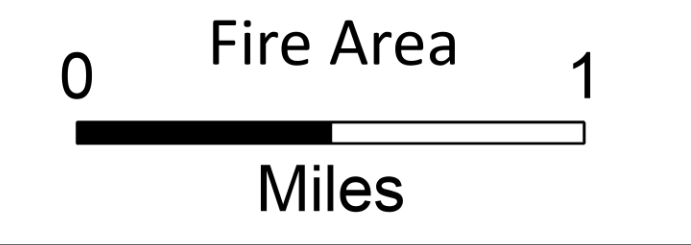


Operations

Pioneer
WA-SES-000173
07/15/2024

18,731 acres on 7/15/2024 @ 0100



Helispot	Repeater	Unknown	Contained
Sling Site	Hazard	Completed Dozer Line	Uncontained
Branch Break	Dip Site	Completed Hand Line	Flick Creek
Drop Point	Draft Site	Completed Mixed Construction Line	Rex Creek Complex
Camp	Other Property	Completed Road as Line	Uno Peak
Lookout	Pump	Planned Hand Line	Wilderness
Hot Spot - Spot Fire	IR Isolated Heat Source	Access Route	U.S. Forest Service
Other	Defensible - Stand Alone	Other	National Park Service
Mobile Weather Unit	Defensible - Prep and Hold	Escape Route	
Internet Access	Non-Defensible - Prep and Leave	Temporary Flight Restriction	



CIMT NW 112 GIS
7/15/2024 0640