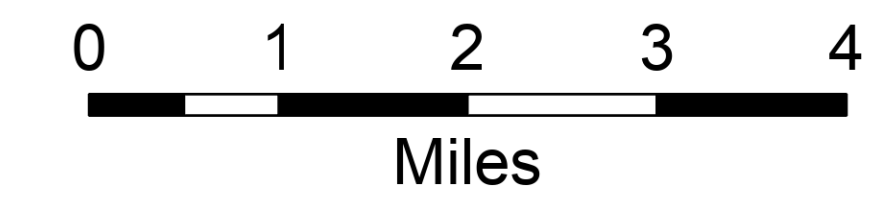


Transportation Map

Pioneer Fire
WA-SES-000173
07/15/2024

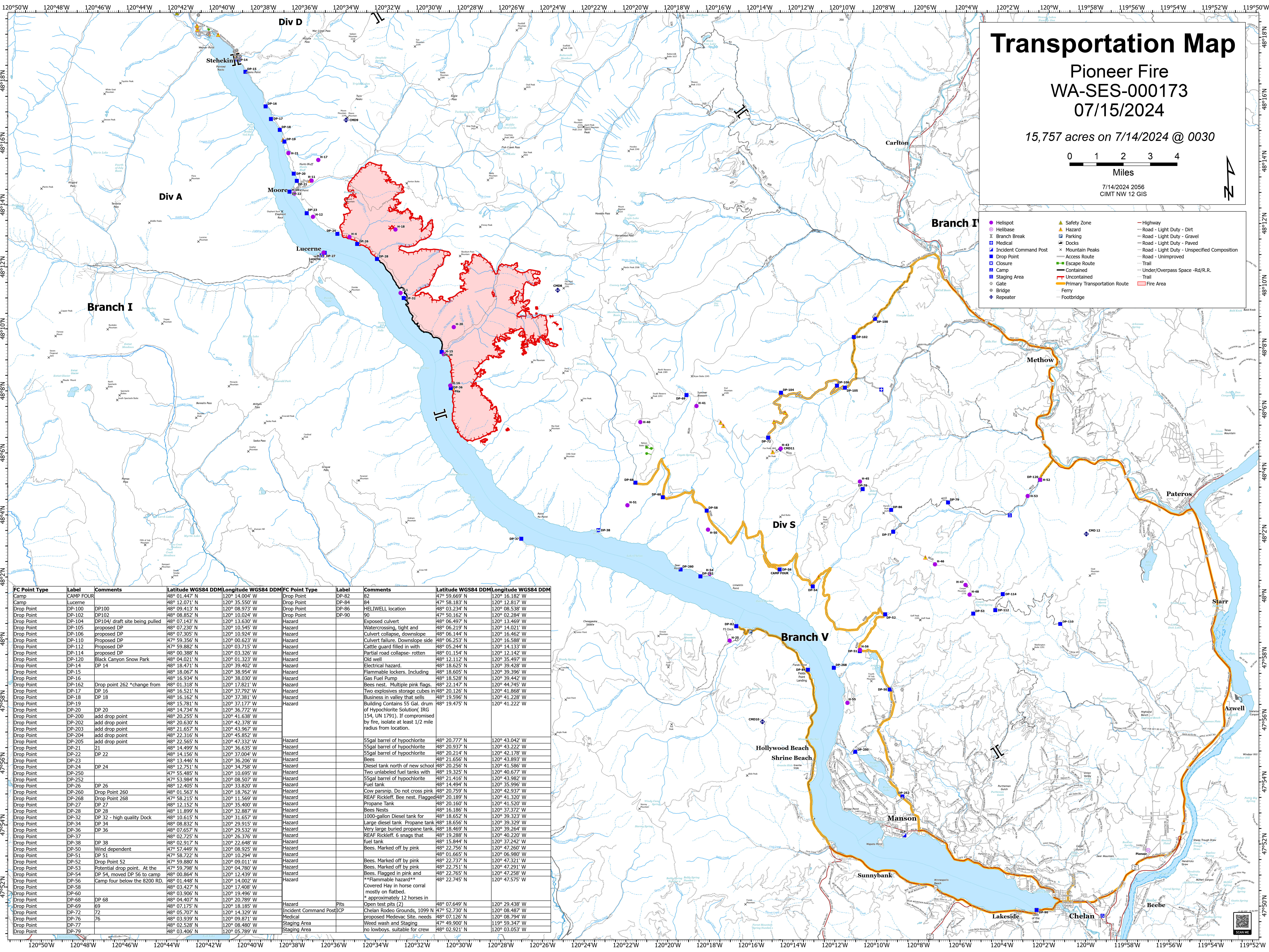
15,757 acres on 7/14/2024 @ 0030



7/14/2024 2056
CIMT NW 12 GIS



- Helispot
- Helibase
- ⌵ Branch Break
- ⊠ Medical
- ⊠ Incident Command Post
- ⊠ Drop Point
- ⊠ Closure
- ⊠ Camp
- ⊠ Staging Area
- ⊠ Gate
- ⊠ Bridge
- ⊠ Repeater
- ▲ Safety Zone
- ▲ Hazard
- ⊠ Parking
- ⊠ Docks
- ⊠ Mountain Peaks
- Access Route
- Escape Route
- Contained
- Uncontained
- Primary Transportation Route
- Ferry
- Footbridge
- Highway
- Road - Light Duty - Dirt
- Road - Light Duty - Gravel
- Road - Light Duty - Paved
- Road - Light Duty - Unspecified Composition
- Road - Unimproved
- Trail
- Under/Overpass Space - Rd/R.R.
- Trail
- Fire Area



FC Point Type	Label	Comments	Latitude WGS84 DDM	Longitude WGS84 DDM	FC Point Type	Label	Comments	Latitude WGS84 DDM	Longitude WGS84 DDM
Camp	CAMP FOUR		48° 01.447' N	120° 14.004' W	Drop Point	DP-82	82	47° 59.669' N	120° 16.182' W
Camp	Lucerne		48° 12.071' N	120° 35.550' W	Drop Point	DP-84	84	47° 58.183' N	120° 12.817' W
Drop Point	DP-100	DP100	48° 09.413' N	120° 08.973' W	Drop Point	DP-86	86	48° 03.234' N	120° 08.538' W
Drop Point	DP-102	DP102	48° 08.852' N	120° 10.024' W	Drop Point	DP-88	88	47° 50.162' N	120° 02.284' W
Drop Point	DP-104	DP104/ draft site being pulled	48° 07.143' N	120° 13.630' W	Hazard	DP-90	90	48° 06.497' N	120° 13.469' W
Drop Point	DP-105	proposed DP	48° 07.230' N	120° 10.545' W	Hazard			48° 06.219' N	120° 14.021' W
Drop Point	DP-106	proposed DP	48° 07.305' N	120° 10.924' W	Hazard			48° 06.144' N	120° 16.462' W
Drop Point	DP-110	Proposed DP	47° 59.356' N	120° 00.623' W	Hazard			48° 06.253' N	120° 16.588' W
Drop Point	DP-112	Proposed DP	47° 59.882' N	120° 03.715' W	Hazard			48° 05.244' N	120° 14.133' W
Drop Point	DP-114	proposed DP	48° 00.388' N	120° 03.326' W	Hazard			48° 01.154' N	120° 12.142' W
Drop Point	DP-120	Black Canyon Snow Park	48° 04.021' N	120° 01.323' W	Hazard			48° 12.112' N	120° 35.497' W
Drop Point	DP-14	DP 14	48° 18.471' N	120° 39.402' W	Hazard			48° 18.625' N	120° 39.428' W
Drop Point	DP-15	48° 18.067' N	120° 38.954' W	Hazard			48° 18.605' N	120° 39.396' W	
Drop Point	DP-16	48° 16.934' N	120° 38.030' W	Hazard			48° 18.528' N	120° 39.442' W	
Drop Point	DP-162	Drop point 262 *change from	48° 01.318' N	120° 17.821' W	Hazard			48° 22.147' N	120° 44.745' W
Drop Point	DP-17	DP 16	48° 16.521' N	120° 37.792' W	Hazard			48° 20.126' N	120° 41.868' W
Drop Point	DP-18	DP 18	48° 16.162' N	120° 37.381' W	Hazard			48° 19.596' N	120° 41.228' W
Drop Point	DP-19	48° 15.781' N	120° 37.177' W	Hazard			48° 19.475' N	120° 41.222' W	
Drop Point	DP-20	DP 20	48° 14.734' N	120° 36.772' W					
Drop Point	DP-200	add drop point	48° 20.255' N	120° 41.638' W					
Drop Point	DP-202	add drop point	48° 20.630' N	120° 42.378' W					
Drop Point	DP-203	add drop point	48° 21.657' N	120° 43.967' W					
Drop Point	DP-204	add drop point	48° 22.316' N	120° 45.852' W					
Drop Point	DP-205	add drop point	48° 22.565' N	120° 47.332' W	Hazard			48° 20.777' N	120° 43.042' W
Drop Point	DP-21	21	48° 14.499' N	120° 36.635' W	Hazard			48° 20.937' N	120° 43.222' W
Drop Point	DP-22	DP 22	48° 14.156' N	120° 36.530' W	Hazard			48° 20.214' N	120° 42.178' W
Drop Point	DP-23	48° 13.446' N	120° 36.206' W	Hazard			48° 21.656' N	120° 43.893' W	
Drop Point	DP-24	DP 24	48° 12.751' N	120° 34.758' W	Hazard			48° 20.256' N	120° 41.586' W
Drop Point	DP-250	47° 55.485' N	120° 10.695' W	Hazard			48° 19.325' N	120° 40.677' W	
Drop Point	DP-252	47° 53.984' N	120° 08.507' W	Hazard			48° 21.416' N	120° 43.982' W	
Drop Point	DP-26	DP 26	48° 12.405' N	120° 33.820' W	Hazard			48° 14.496' N	120° 35.996' W
Drop Point	DP-260	Drop Point 260	48° 01.563' N	120° 18.762' W	Hazard			48° 20.759' N	120° 42.937' W
Drop Point	DP-268	Drop Point 268	48° 08.217' N	120° 19.569' W	Hazard			48° 20.189' N	120° 41.320' W
Drop Point	DP-27	DP 27	48° 12.152' N	120° 35.400' W	Hazard			48° 20.160' N	120° 41.520' W
Drop Point	DP-28	DP 28	48° 11.899' N	120° 32.887' W	Hazard			48° 16.186' N	120° 37.372' W
Drop Point	DP-32	DP 32 - high quality Dock	48° 10.615' N	120° 31.657' W	Hazard			48° 18.652' N	120° 39.323' W
Drop Point	DP-34	DP 34	48° 08.832' N	120° 29.915' W	Hazard			48° 18.656' N	120° 39.329' W
Drop Point	DP-36	DP 36	48° 07.657' N	120° 29.532' W	Hazard			48° 18.469' N	120° 39.264' W
Drop Point	DP-37	48° 07.225' N	120° 26.376' W	Hazard			48° 19.288' N	120° 40.230' W	
Drop Point	DP-38	DP 38	48° 02.917' N	120° 19.648' W	Hazard			48° 15.844' N	120° 37.242' W
Drop Point	DP-50	Wind dependent	47° 57.449' N	120° 08.925' W	Hazard			48° 22.756' N	120° 47.260' W
Drop Point	DP-51	DP 51	47° 58.722' N	120° 10.294' W	Hazard			48° 01.665' N	120° 06.980' W
Drop Point	DP-52	Drop Point 52	47° 59.880' N	120° 09.011' W	Hazard			48° 22.737' N	120° 47.321' W
Drop Point	DP-53	Potential drop point. At the	47° 59.798' N	120° 04.780' W	Hazard			48° 22.751' N	120° 47.291' W
Drop Point	DP-54	DP 54, moved DP 56 to camp	48° 00.864' N	120° 12.439' W	Hazard			48° 22.765' N	120° 47.258' W
Drop Point	DP-56	Camp four below the 8200 RD.	48° 01.448' N	120° 14.002' W	Hazard			48° 22.745' N	120° 47.575' W
Drop Point	DP-58	48° 03.427' N	120° 17.408' W						
Drop Point	DP-60	48° 03.906' N	120° 19.496' W						
Drop Point	DP-68	DP 68	48° 04.407' N	120° 20.789' W					
Drop Point	DP-69	69	48° 07.175' N	120° 18.185' W	Hazard			48° 07.649' N	120° 29.438' W
Drop Point	DP-72	72	48° 05.707' N	120° 14.329' W	Incident Command Post	ICP	Chelan Rodeo Grounds, 1099 N	47° 52.730' N	120° 08.487' W
Drop Point	DP-76	76	48° 03.939' N	120° 09.871' W	Medical		proposed Medevac Site, needs	48° 07.126' N	120° 08.794' W
Drop Point	DP-77	77	48° 02.528' N	120° 08.480' W	Staging Area		Weed wash and Staging	47° 49.900' N	120° 39.347' W
Drop Point	DP-79	79	48° 03.406' N	120° 05.789' W	Staging Area		no lowboys, suitable for crew	48° 02.921' N	120° 03.053' W