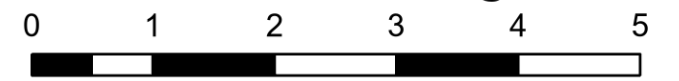


Ground Transportation Map

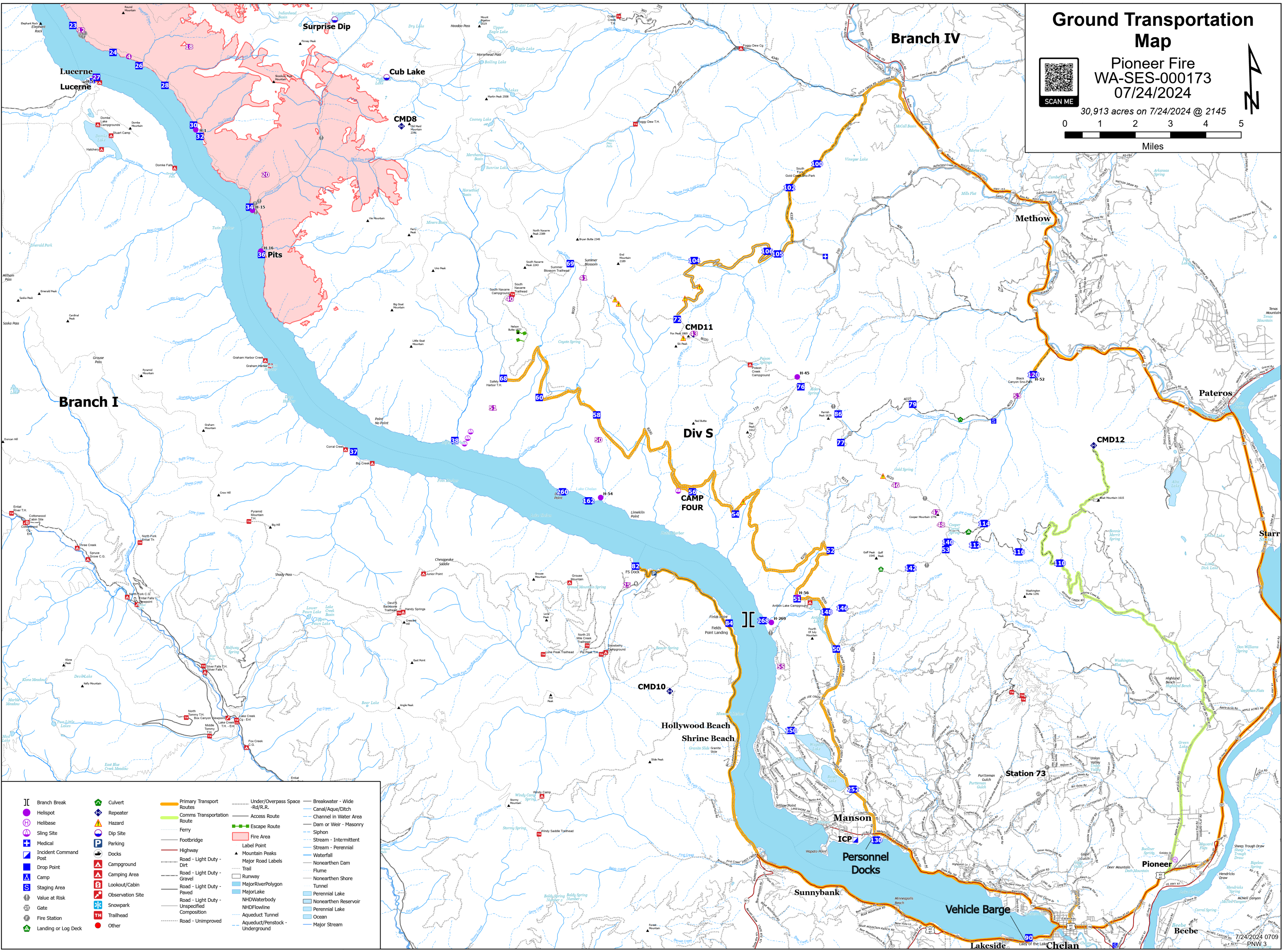
Pioneer Fire
WA-SES-000173
07/24/2024



30,913 acres on 7/24/2024 @ 2145



Miles



	Branch Break		Culvert		Primary Transport Routes		Under/Overpass Space		Breakwater - Wide
	Helispot		Repeater		Comms Transportation Route		Access Route		Canal/Aque/Ditch
	Helibase		Hazard		Ferry		Escape Route		Dam or Weir - Masonry
	Sling Site		Dip Site		Footbridge		Fire Area		Stream - Intermittent
	Medical		Parking		Highway		Label Point		Stream - Perennial
	Incident Command Post		Docks		Road - Light Duty - Dirt		Mountain Peaks		Waterfall
	Drop Point		Campground		Road - Light Duty - Gravel		Major Road Labels		Nonearthen Cam
	Camp		Camping Area		Road - Light Duty - Paved		Trail		Flume
	Staging Area		Lookout/Cabin		Road - Light Duty - Unimproved		Runway		Nonearthen Shore
	Value at Risk		Observation Site				MajorRiverPolygon		Tunnel
	Gate		Snowpark				MajorLake		Perennial Lake
	Fire Station		Trailhead				NHDWaterbody		Nonearthen Reservoir
	Landing or Log Deck		Other				NHDFlowline		Perennial Lake
							Aqueduct/Tunnel		Ocean
							Aqueduct/Penstock - Underground		Major Stream