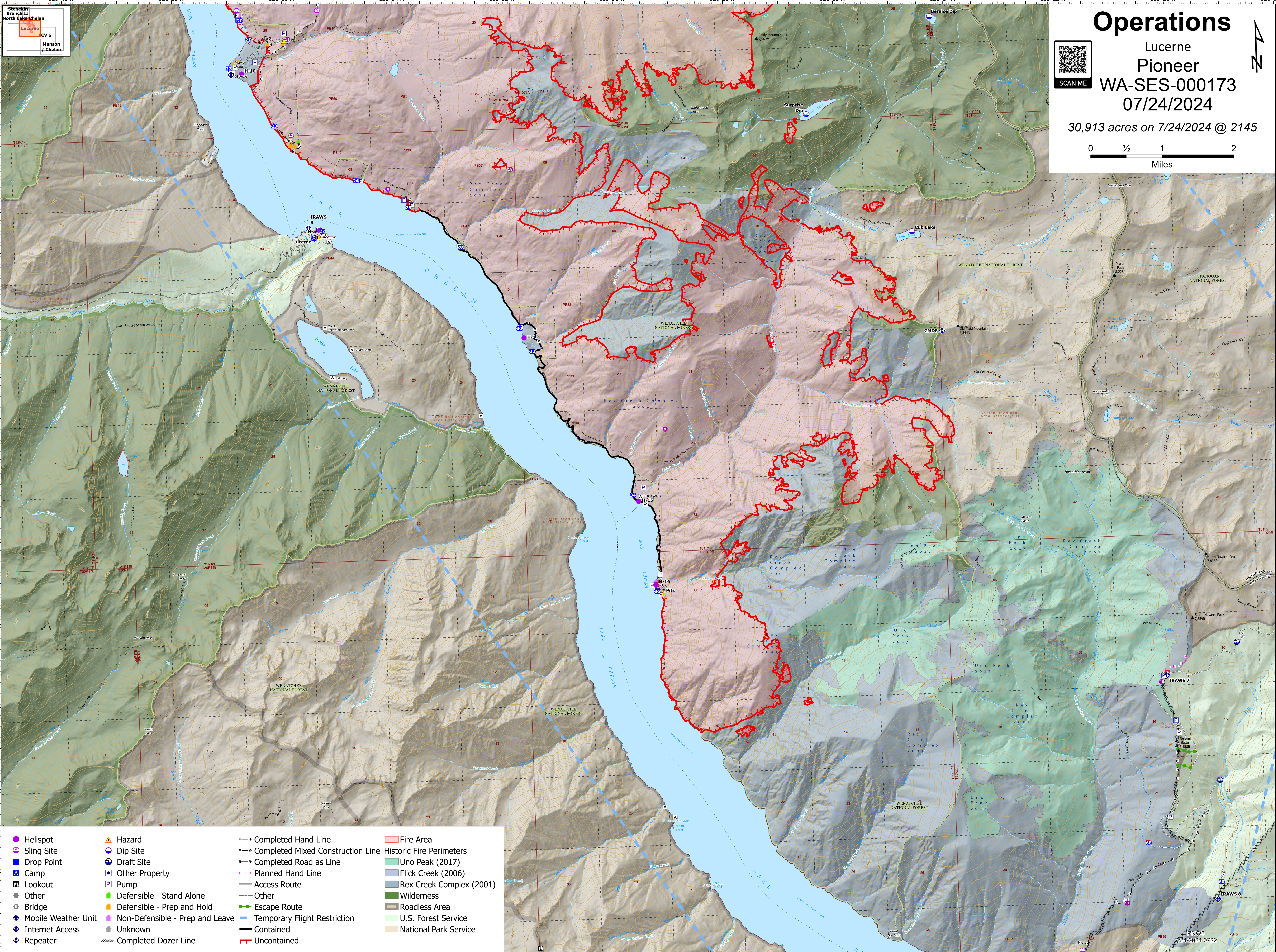
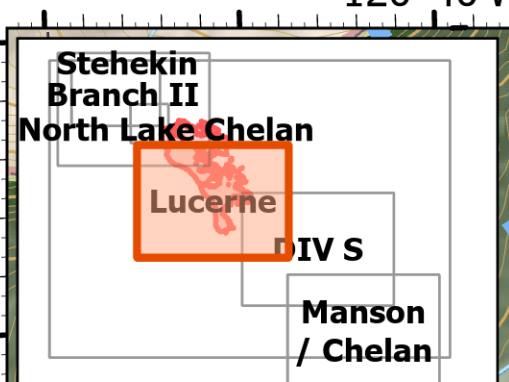
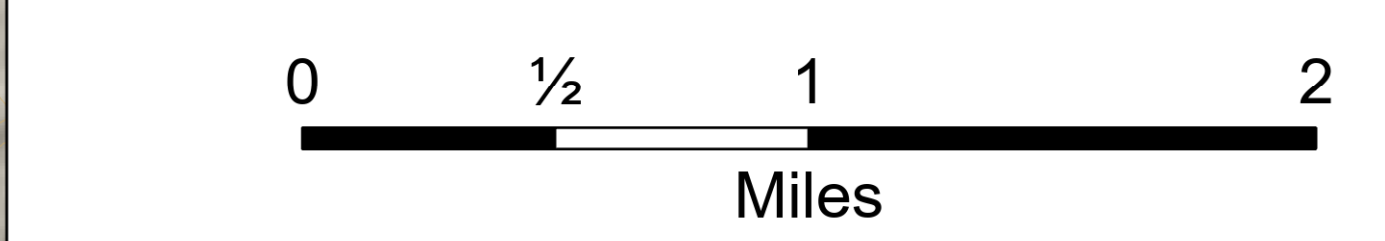


# Operations

Lucerne  
Pioneer  
WA-SES-000173  
07/24/2024

30,913 acres on 7/24/2024 @ 2145



Helispot	Hazard	Completed Hand Line	Fire Area
Sling Site	Dip Site	Completed Mixed Construction Line	Historic Fire Perimeters
Drop Point	Draft Site	Completed Road as Line	Uno Peak (2017)
Camp	Other Property	Planned Hand Line	Flick Creek (2006)
Lookout	Pump	Access Route	Rex Creek Complex (2001)
Other	Defensible - Stand Alone	Other	Wilderness
Bridge	Defensible - Prep and Hold	Escape Route	Roadless Area
Mobile Weather Unit	Non-Defensible - Prep and Leave	Temporary Flight Restriction	U.S. Forest Service
Internet Access	Unknown	Contained	National Park Service
Repeater	Completed Dozer Line	Uncontained	

PNW3  
7/24/2024 0722