

# Transportation Map

Pioneer Fire  
WA-SES-000173  
07/24/2024

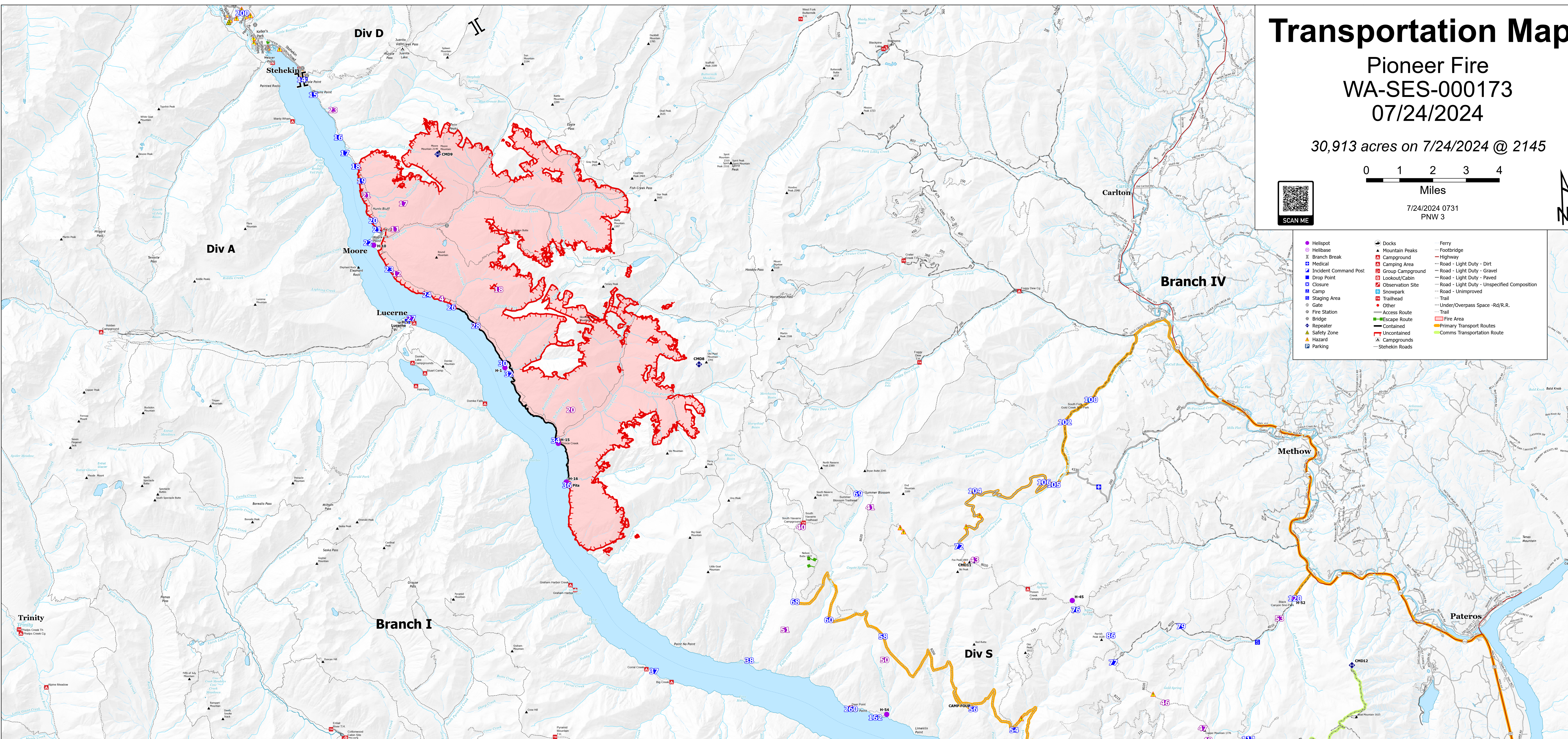
30,913 acres on 7/24/2024 @ 2145

0 1 2 3 4  
Miles

7/24/2024 0731  
PNW 3



- Helipoint
- Helibase
- II Branch Break
- Medical
- Incident Command Post
- Drop Point
- Closure
- Camp
- Staging Area
- Gate
- Fire Station
- Bridge
- Repeater
- Safety Zone
- Hazard
- Parking
- Docks
- Mountain Peaks
- Campground
- Group Campground
- Lookout/Cabin
- Observation Site
- Snowpark
- Trailhead
- Other
- Access Route
- Escape Route
- Contained
- Uncontained
- Campgrounds
- Stehekin Roads
- Ferry
- Footbridge
- Highway
- Road - Light Duty - Dirt
- Road - Light Duty - Gravel
- Road - Light Duty - Paved
- Road - Light Duty - Unspecified Composition
- Road - Unimproved
- Trail
- Under/Overpass Space - Rd/R.R.
- Fire Area
- Primary Transport Routes
- Comins Transportation Route



FC Point Type	Label	Comments	Latitude WGS84 DDM	Longitude WGS84 DDM	FC Point Type	Label	Comments	Latitude WGS84 DDM	Longitude WGS84 DDM
Camp	CAMP FOUR		48° 01.447' N	120° 14.004' W	Drop Point	DP 68		48° 04.407' N	120° 20.789' W
Camp	Lucerne		48° 12.071' N	120° 35.550' W	Drop Point	69		48° 07.175' N	120° 18.185' W
Drop Point	100	DP100	48° 09.413' N	120° 08.973' W	Drop Point	72		48° 05.707' N	120° 14.329' W
Drop Point	102	DP102	48° 08.852' N	120° 10.024' W	Drop Point	76		48° 03.939' N	120° 09.871' W
Drop Point	104	DP104/ draft site being pulled	48° 07.143' N	120° 13.630' W	Drop Point	77		48° 02.528' N	120° 08.480' W
Drop Point	105	proposed DP	48° 07.230' N	120° 10.545' W	Drop Point	79		48° 03.406' N	120° 05.789' W
Drop Point	106	proposed DP	48° 07.305' N	120° 10.924' W	Drop Point	82		47° 59.669' N	120° 16.182' W
Drop Point	110	Proposed DP	47° 59.356' N	120° 00.623' W	Drop Point	84		47° 58.183' N	120° 12.817' W
Drop Point	112	Proposed DP	47° 59.882' N	120° 03.715' W	Drop Point	86		48° 03.234' N	120° 08.538' W
Drop Point	114		48° 00.402' N	120° 03.339' W	Drop Point	90		47° 50.162' N	120° 02.284' W
Drop Point	116	Good option for closer medicav	47° 59.672' N	120° 02.105' W	Hazard		Exposed culvert	48° 06.497' N	120° 13.469' W
Drop Point	120	Black Canyon Snow Park, two per operations	48° 04.021' N	120° 01.323' W	Hazard		Watercrossing, tight and	48° 05.219' N	120° 14.021' W
Drop Point	130		47° 52.709' N	120° 07.723' W	Hazard		Culvert collapse, downslope	48° 06.144' N	120° 16.462' W
Drop Point	14	DP 14	48° 18.471' N	120° 39.402' W	Hazard		Culvert failure, Downslope side	48° 06.253' N	120° 16.588' W
Drop Point	140	Drop point 140	47° 59.977' N	120° 04.696' W	Hazard		Cattle guard filled in with	48° 05.244' N	120° 14.133' W
Drop Point	142		47° 59.373' N	120° 06.093' W	Hazard		Partial road collapse- rotten	48° 01.154' N	120° 12.142' W
Drop Point	146	Drop point 146, would need to	47° 58.453' N	120° 08.656' W	Hazard		Old well	48° 12.112' N	120° 35.497' W
Drop Point	148	Drop point 148	47° 58.372' N	120° 09.239' W	Hazard		Electrical hazard.	48° 18.625' N	120° 39.428' W
Drop Point	15		48° 18.067' N	120° 38.954' W	Hazard		Flammable lockers, Including	48° 18.608' N	120° 39.396' W
Drop Point	16		48° 16.934' N	120° 38.030' W	Hazard		Gas Fuel Pump	48° 18.528' N	120° 39.442' W
Drop Point	162	*please change from 162-262	48° 01.318' N	120° 17.821' W	Hazard		Two explosives storage cubes in	48° 20.126' N	120° 41.868' W
Drop Point	17	DP 16	48° 16.521' N	120° 37.792' W	Hazard		Business in valley that sells	48° 19.596' N	120° 41.228' W
Drop Point	18	DP 18	48° 16.162' N	120° 37.381' W	Hazard		Building Contains 55 Gal. drum of	48° 19.475' N	120° 41.222' W
Drop Point	19		48° 15.761' N	120° 37.177' W			Hypochlorite Solution (IRG		
Drop Point	20	DP 20	48° 14.734' N	120° 36.772' W			154, UN 1791). If compromised		
Drop Point	200	add drop point	48° 20.255' N	120° 41.638' W			by fire, isolate at least 1/2 mile		
Drop Point	202	add drop point	48° 20.630' N	120° 42.378' W			radius from location.		
Drop Point	203	add drop point	48° 21.657' N	120° 43.967' W					
Drop Point	204	add drop point	48° 22.316' N	120° 45.852' W	Hazard		55gal barrel of hypochlorite	48° 20.777' N	120° 43.042' W
Drop Point	205	add drop point	48° 22.565' N	120° 47.332' W	Hazard		55gal barrel of hypochlorite	48° 20.927' N	120° 43.222' W
Drop Point	21		48° 14.499' N	120° 36.635' W	Hazard		55gal barrel of hypochlorite	48° 20.214' N	120° 42.178' W
Drop Point	22	DP 22	48° 14.156' N	120° 37.004' W	Hazard		Diesel tank north of new school	48° 20.256' N	120° 41.586' W
Drop Point	23		48° 13.446' N	120° 36.206' W	Hazard		Two unlabeled fuel tanks with	48° 19.325' N	120° 40.677' W
Drop Point	24	DP 24	48° 12.751' N	120° 34.758' W	Hazard		55gal barrel of hypochlorite	48° 21.416' N	120° 43.982' W
Drop Point	250		47° 55.485' N	120° 10.695' W	Hazard		Fuel tank	48° 14.494' N	120° 35.996' W
Drop Point	252		47° 53.984' N	120° 08.507' W	Hazard		REAF Rickleff. Bee nest. Flaggped	48° 20.189' N	120° 41.320' W
Drop Point	26	DP 26	48° 12.405' N	120° 33.820' W	Hazard		Cow parsnip. Do not cross pink	48° 20.759' N	120° 42.937' W
Drop Point	260	Drop Point 260	48° 01.563' N	120° 18.762' W	Hazard		Propane Tank	48° 20.160' N	120° 41.520' W
Drop Point	268	Drop Point 268	47° 58.215' N	120° 11.569' W	Hazard		1000-gallon Diesel tank for	48° 18.652' N	120° 39.323' W
Drop Point	27	DP 27	48° 12.152' N	120° 35.400' W	Hazard		Bees Nests	48° 16.186' N	120° 37.372' W
Drop Point	28	DP 28	48° 11.899' N	120° 32.887' W	Hazard		Large diesel tank. Propane tank	48° 18.656' N	120° 39.329' W
Drop Point	30		48° 10.898' N	120° 31.879' W	Hazard		Very large buried propane tank.	48° 18.469' N	120° 39.264' W
Drop Point	32	DP 32 - high quality Dock	48° 10.615' N	120° 31.624' W	Hazard		REAF Rickleff. 6 snags that	48° 19.288' N	120° 40.220' W
Drop Point	34	DP 34	48° 08.832' N	120° 29.515' W	Hazard		fuel tank	48° 01.665' N	120° 06.980' W
Drop Point	36	DP 36	48° 07.657' N	120° 29.532' W	Hazard		fuel tank	48° 15.844' N	120° 37.242' W
Drop Point	37		48° 02.725' N	120° 26.376' W	Hazard		REAF Rickleff. YOUNG pacific	48° 20.354' N	120° 41.658' W
Drop Point	38	DP 38	48° 02.917' N	120° 22.648' W	Hazard		Barbed wire on ground, 20'	48° 22.753' N	120° 47.363' W
Drop Point	50	Wind dependent	47° 57.449' N	120° 08.925' W	Hazard		2 Fuel, propane tanks behind	48° 22.751' N	120° 47.502' W
Drop Point	51	DP 51	47° 56.722' N	120° 10.294' W	Hazard		Barbed wire, flagged with REAF	48° 18.704' N	120° 39.388' W
Drop Point	52	Drop Point 52	47° 59.880' N	120° 09.011' W	Hazard		2 1200 gallon propane tanks in	48° 20.223' N	120° 42.188' W
Drop Point	53	Potential drop point. At the	47° 59.798' N	120° 04.780' W	Hazard		REAF Rickleff. In historic well	48° 20.082' N	120° 42.130' W
Drop Point	54	DP 54, moved DP 56 to camp	48° 00.864' N	120° 12.439' W	Hazard		Open test pits (2)	48° 07.649' N	120° 29.438' W
Drop Point	56	Camp four below the 8200 RD.	48° 01.448' N	120° 14.002' W	Incident Command Post/CP		Chelan Rodeo Grounds, 1099 N	47° 52.730' N	120° 08.487' W
Drop Point	58		48° 03.427' N	120° 17.408' W	Medical		proposed Medevac Site, needs	48° 03.216' N	120° 08.794' W
Drop Point	60		48° 03.906' N	120° 19.496' W	Staging Area		Wesl wash and Staging	47° 49.900' N	119° 59.347' W
					Staging Area		no lowboys, suitable for crew	48° 02.921' N	120° 03.053' W