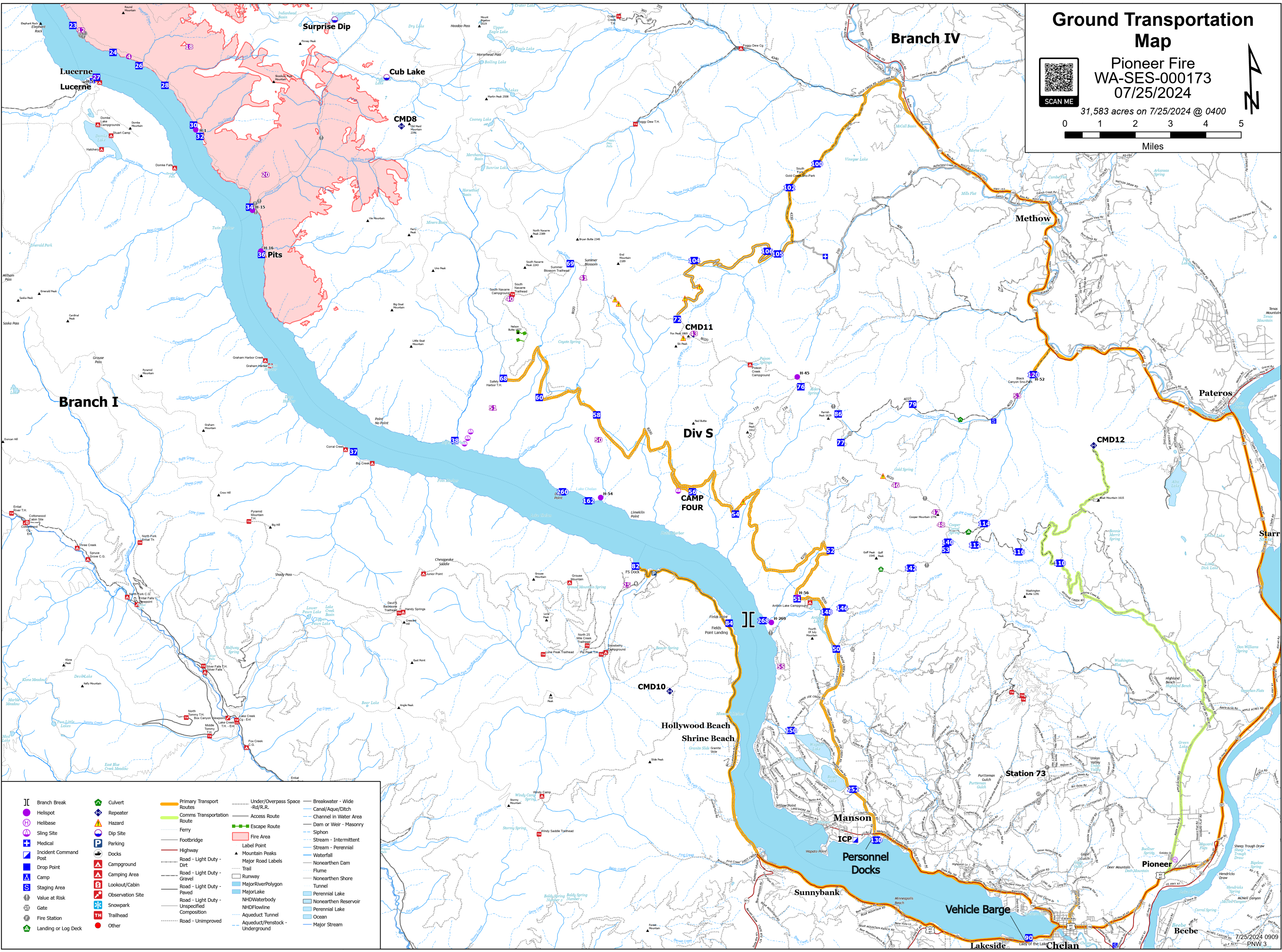
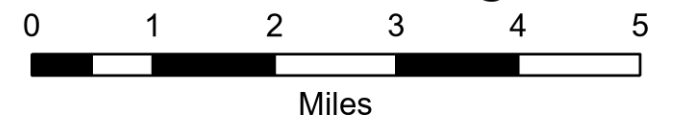


Ground Transportation Map

Pioneer Fire
WA-SES-000173
07/25/2024



31,583 acres on 7/25/2024 @ 0400



| | | | | | | | | | |
|--|-----------------------|--|------------------|--|--------------------------------|--|---------------------------------|--|-----------------------|
| | Branch Break | | Culvert | | Primary Transport Routes | | Under/Overpass Space | | Breakwater - Wide |
| | Helibase | | Repeater | | Comms Transportation Route | | Access Route | | Canal/Aque/Ditch |
| | Sling Site | | Hazard | | Ferry | | Escape Route | | Dam or Weir - Masonry |
| | Medical | | Dip Site | | Footbridge | | Fire Area | | Stream - Intermittent |
| | Incident Command Post | | Parking | | Highway | | Mountain Peaks | | Stream - Perennial |
| | Drop Point | | Docks | | Road - Light Duty - Dirt | | Major Road Labels | | Waterfall |
| | Camp | | Campground | | Road - Light Duty - Gravel | | Trail | | Nonearthen Dam |
| | Staging Area | | Camping Area | | Road - Light Duty - Paved | | Runway | | Flume |
| | Value at Risk | | Lookout/Cabin | | Road - Light Duty - Unimproved | | MajorRiverPolygon | | Nonearthen Shore |
| | Gate | | Observation Site | | | | MajorLake | | Tunnel |
| | Fire Station | | Snowpark | | | | NHDWaterbody | | Perennial Lake |
| | Landing or Log Deck | | TH | | | | NHDFlowline | | Nonearthen Reservoir |
| | | | Other | | | | Aqueduct/Tunnel | | Perennial Lake |
| | | | | | | | Aqueduct/Penstock - Underground | | Ocean |
| | | | | | | | | | Major Stream |