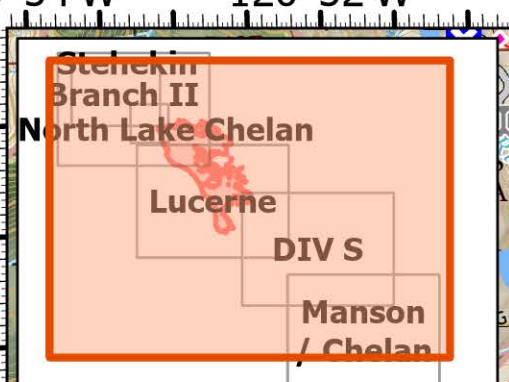
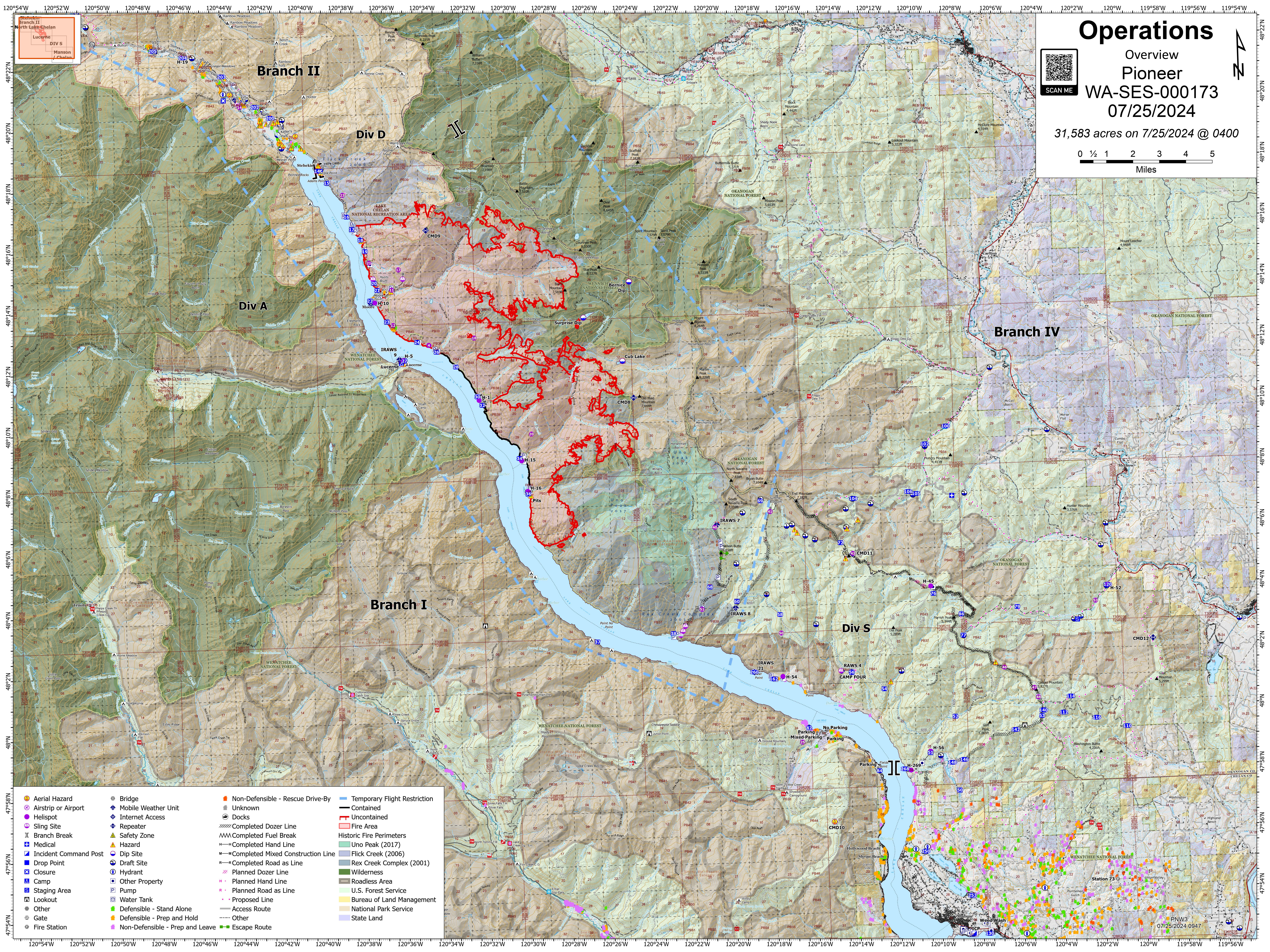
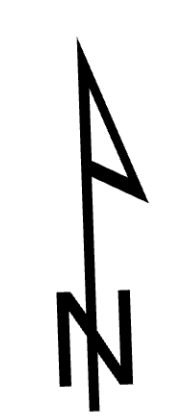
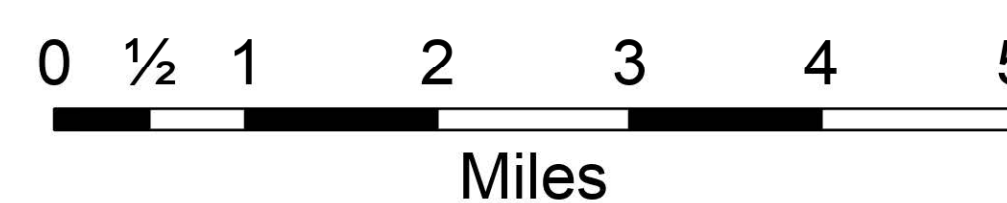


Operations

Overview
Pioneer
WA-SES-000173
07/25/2024

31,583 acres on 7/25/2024 @ 0400



Aerial Hazard	Bridge	Non-Defensible - Rescue Drive-By	Temporary Flight Restriction Contained
Airstrip or Airport	Mobile Weather Unit	Unknown	Uncontained
Helispot	Internet Access	Docks	Fire Area
Sling Site	Repeater	Completed Dozer Line	Historic Fire Perimeters
Branch Break	Safety Zone	Completed Fuel Break	Uno Peak (2017)
Medical	Hazard	Completed Hand Line	Flick Creek (2006)
Incident Command Post	Dip Site	Completed Mixed Construction Line	Rex Creek Complex (2001)
Drop Point	Draft Site	Completed Road as Line	Wilderness
Closure	Hydrant	Planned Dozer Line	Roadless Area
Camp	Other Property	Planned Hand Line	U.S. Forest Service
Staging Area	Pump	Planned Road as Line	Bureau of Land Management
Lookout	Water Tank	Proposed Line	National Park Service
Other	Defensible - Stand Alone	Access Route	State Land
Gate	Defensible - Prep and Hold	Other	
Fire Station	Non-Defensible - Prep and Leave	Escape Route	