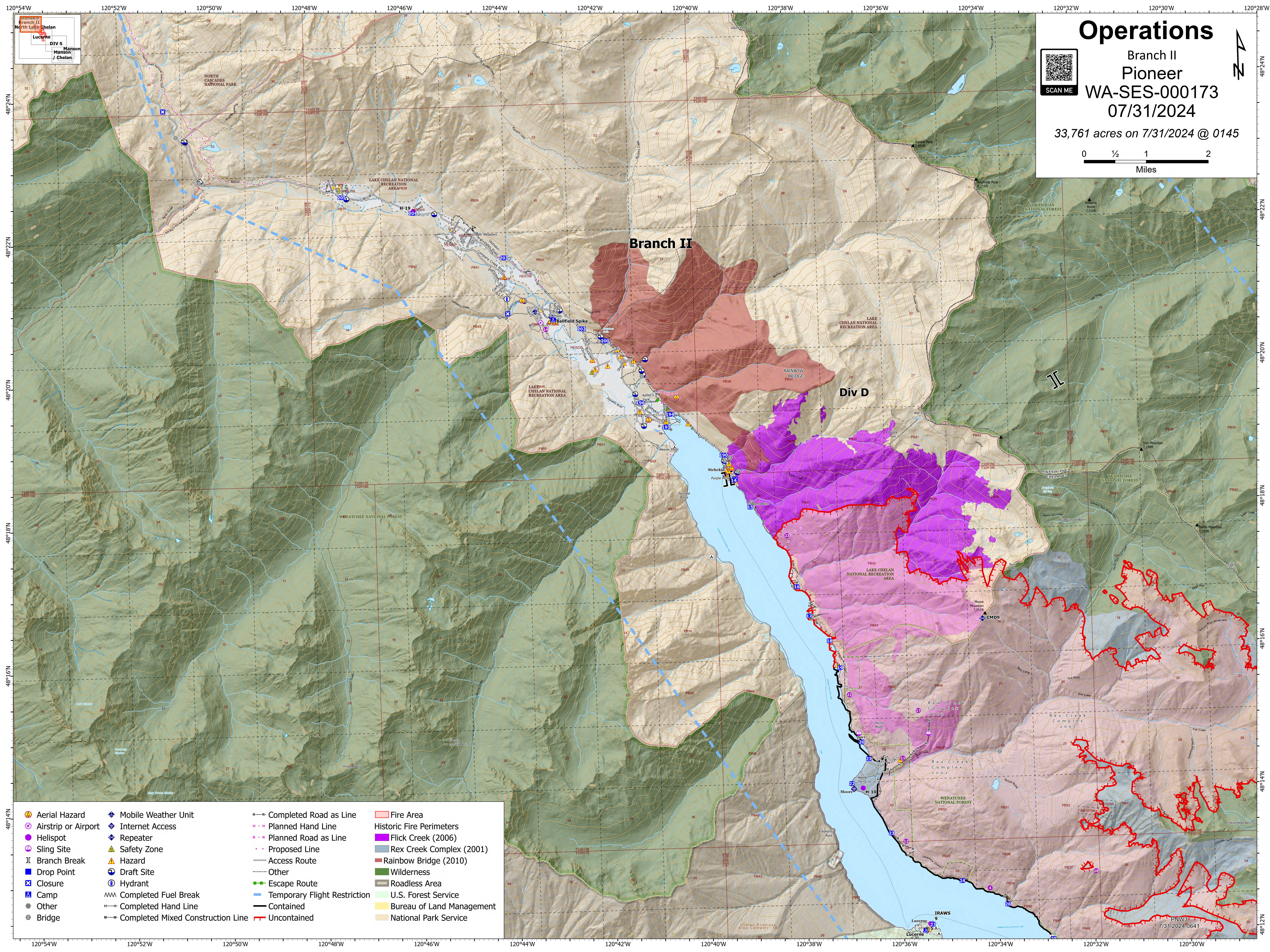
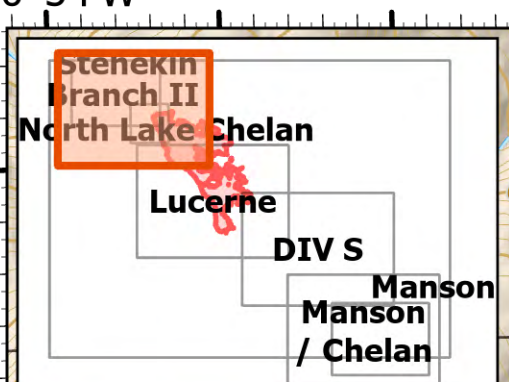
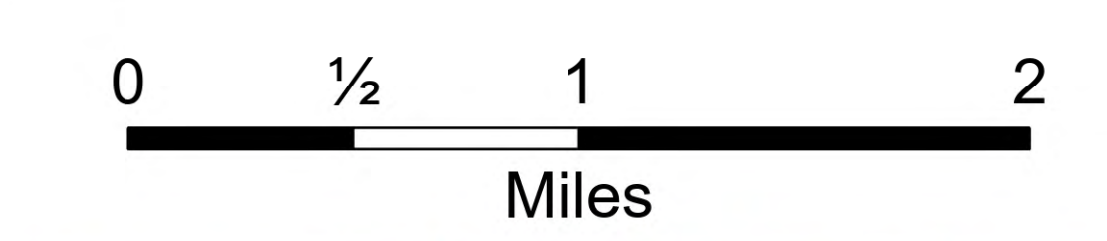


Operations

Branch II
Pioneer
WA-SES-000173
07/31/2024

33,761 acres on 7/31/2024 @ 0145



- | | | | |
|---------------------|-----------------------------------|------------------------------|---------------------------|
| Aerial Hazard | Mobile Weather Unit | Completed Road as Line | Fire Area |
| Airstrip or Airport | Internet Access | Planned Hand Line | Historic Fire Perimeters |
| Helispot | Repeater | Planned Road as Line | Flick Creek (2006) |
| Sling Site | Safety Zone | Proposed Line | Rex Creek Complex (2001) |
| Branch Break | Hazard | Access Route | Rainbow Bridge (2010) |
| Drop Point | Draft Site | Other | Wilderness |
| Closure | Hydrant | Escape Route | Roadless Area |
| Camp | Completed Fuel Break | Temporary Flight Restriction | U.S. Forest Service |
| Other | Completed Hand Line | Contained | Bureau of Land Management |
| Bridge | Completed Mixed Construction Line | Uncontained | National Park Service |

IRAWS 9
PNW3
7/31/2024 0641