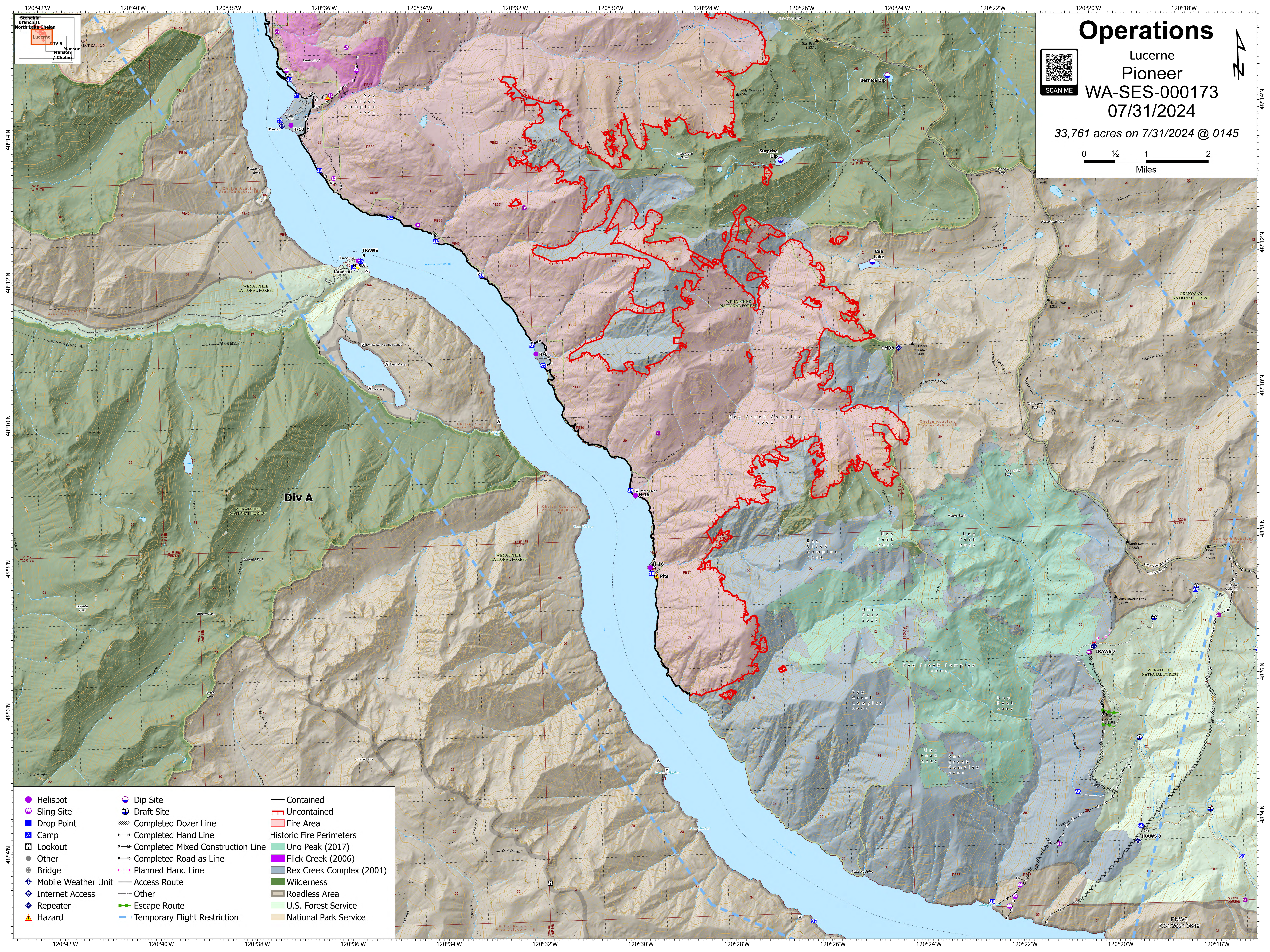
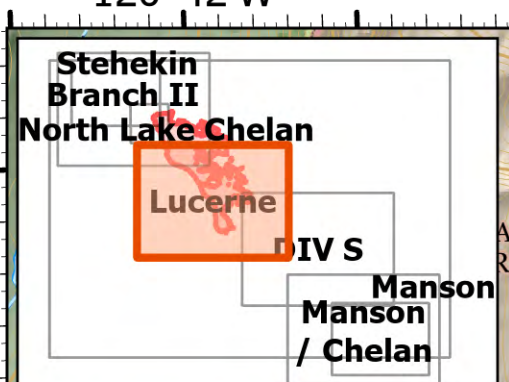
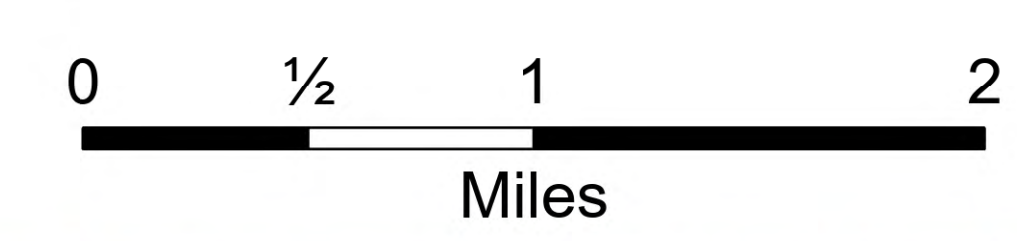


# Operations

Lucerne  
Pioneer  
WA-SES-000173  
07/31/2024

33,761 acres on 7/31/2024 @ 0145



- |                     |                                   |                                 |
|---------------------|-----------------------------------|---------------------------------|
| Helispot            | Dip Site                          | Contained                       |
| Sling Site          | Draft Site                        | Uncontained                     |
| Drop Point          | Completed Dozer Line              | Fire Area                       |
| Camp                | Completed Hand Line               | <b>Historic Fire Perimeters</b> |
| Lookout             | Completed Mixed Construction Line | Uno Peak (2017)                 |
| Other               | Completed Road as Line            | Flick Creek (2006)              |
| Bridge              | Planned Hand Line                 | Rex Creek Complex (2001)        |
| Mobile Weather Unit | Access Route                      | Wilderness                      |
| Internet Access     | Other                             | Roadless Area                   |
| Repeater            | Escape Route                      | U.S. Forest Service             |
| Hazard              | Temporary Flight Restriction      | National Park Service           |

Div A