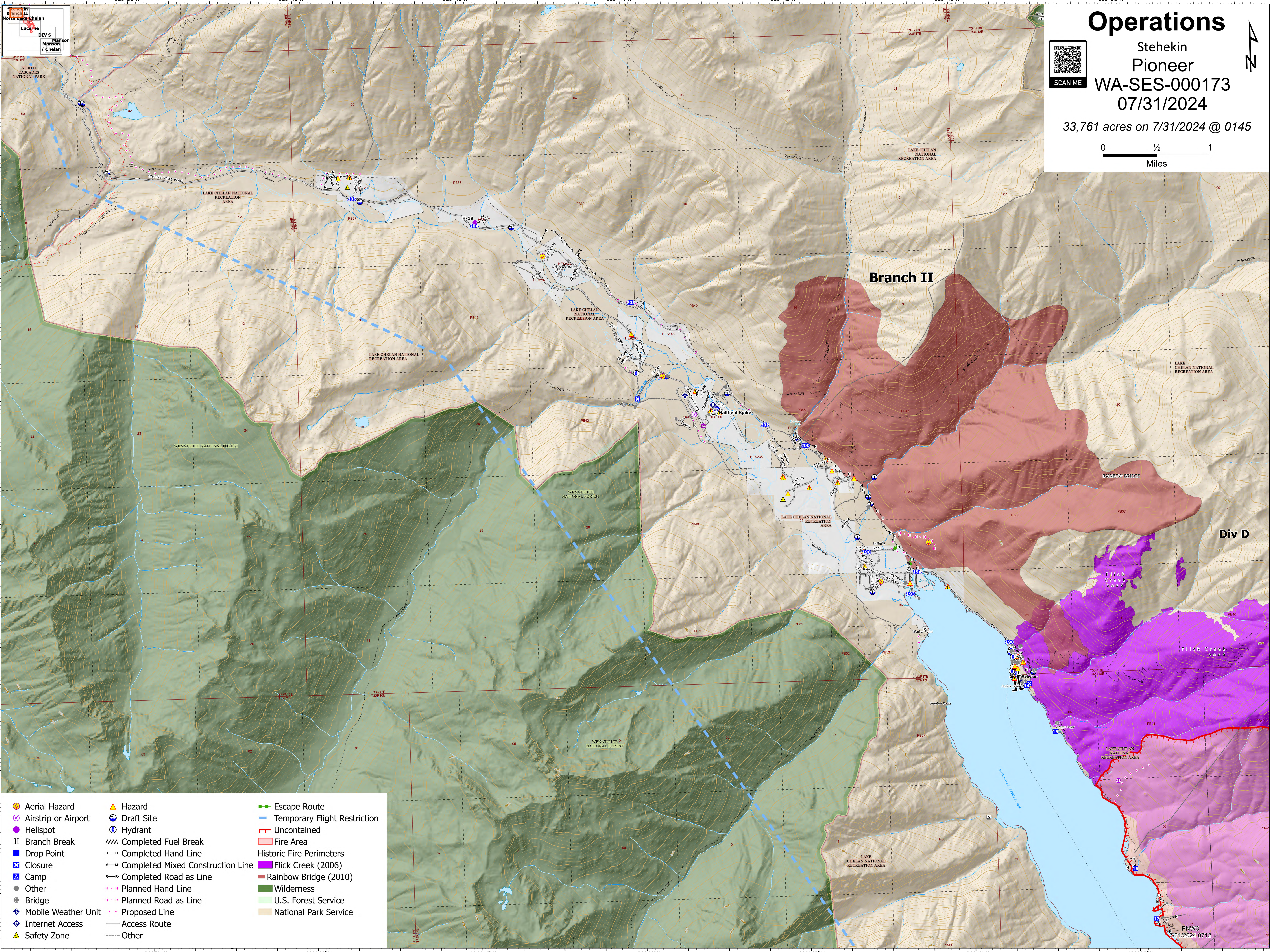
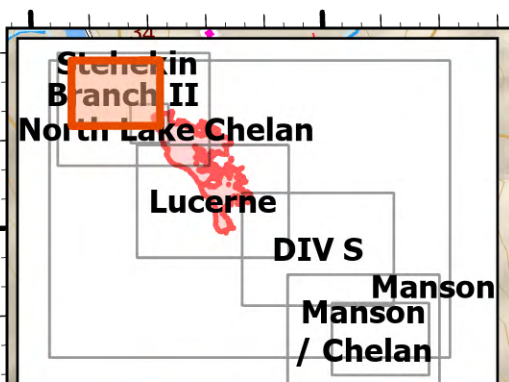
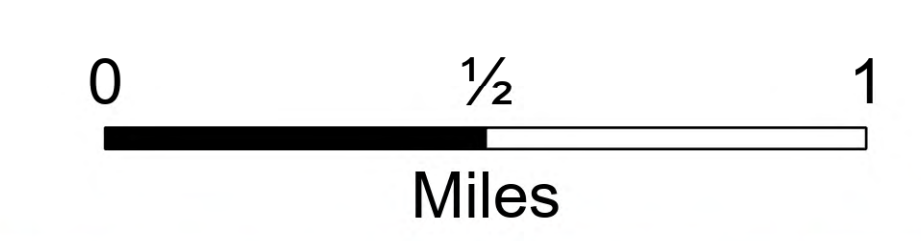


Operations

Stehekin
Pioneer
WA-SES-000173
07/31/2024

33,761 acres on 7/31/2024 @ 0145



- | | | |
|---------------------|-----------------------------------|------------------------------|
| Aerial Hazard | Hazard | Escape Route |
| Airstrip or Airport | Draft Site | Temporary Flight Restriction |
| Helispot | Hydrant | Uncontained |
| Branch Break | Completed Fuel Break | Historic Fire Perimeters |
| Drop Point | Completed Hand Line | Flick Creek (2006) |
| Closure | Completed Mixed Construction Line | Rainbow Bridge (2010) |
| Camp | Completed Road as Line | Wilderness |
| Other | Planned Hand Line | U.S. Forest Service |
| Bridge | Planned Road as Line | National Park Service |
| Mobile Weather Unit | Proposed Line | |
| Internet Access | Access Route | |
| Safety Zone | Other | |

PNW3
7/31/2024 07:12