

# Transportation Map

Pioneer Fire  
WA-SES-000173  
07/31/2024

33,761 acres on 7/31/2024 @ 0145

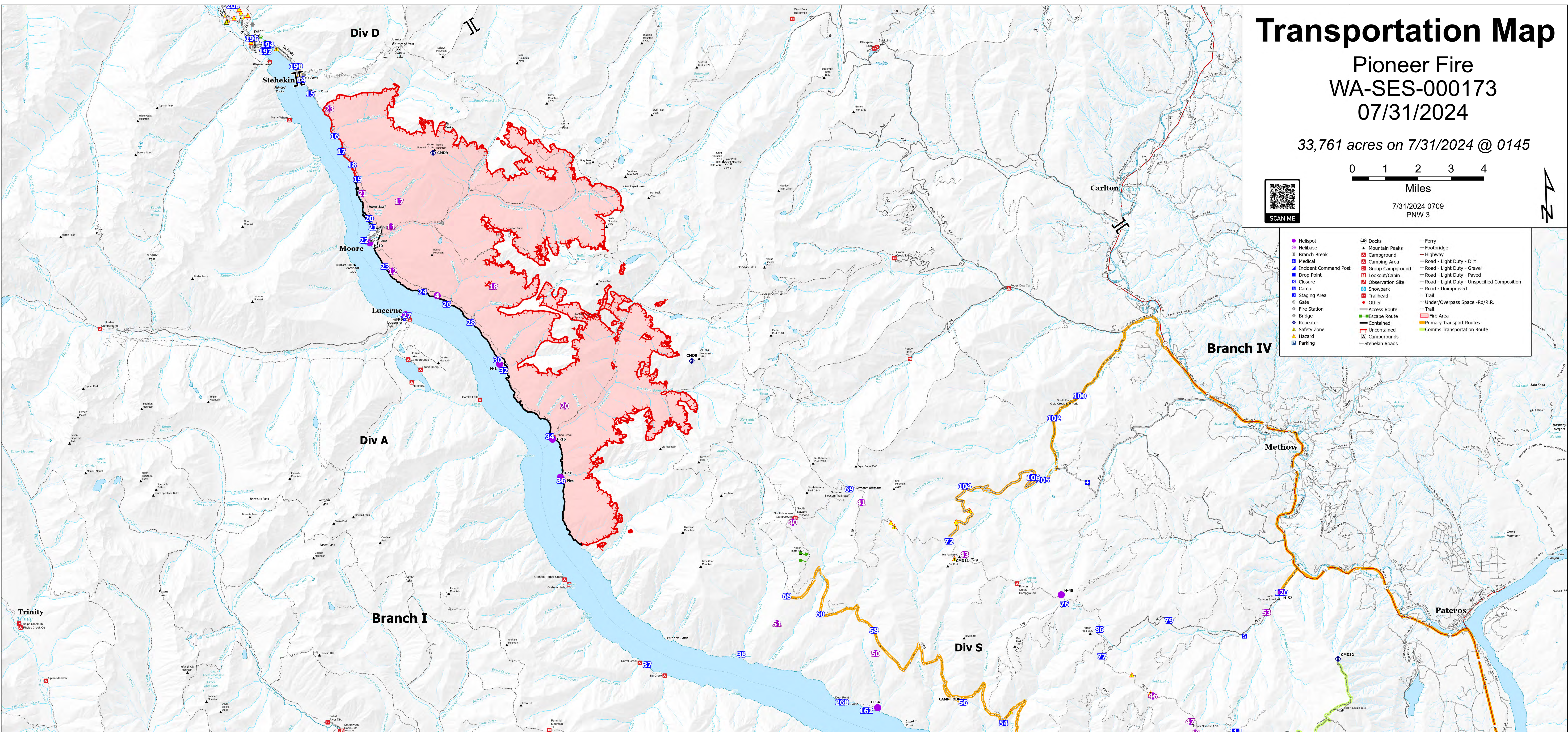
0 1 2 3 4

Miles

7/31/2024 0709  
PNW 3



- Helipoint
- Helibase
- Branch Break
- Medical
- Incident Command Post
- Drop Point
- Closure
- Camp
- Staging Area
- Gate
- Fire Station
- Bridge
- Repeater
- Safety Zone
- Hazard
- Parking
- Docks
- Mountain Peaks
- Campground
- Camping Area
- Group Campground
- Lookout/Cabin
- Observation Site
- Snowpark
- Trailhead
- Access Route
- Escape Route
- Contained
- Uncontained
- Campgrounds
- Stehekin Roads
- Ferry
- Footbridge
- Highway
- Road - Light Duty - Dirt
- Road - Light Duty - Gravel
- Road - Light Duty - Paved
- Road - Light Duty - Unspecified Composition
- Road - Unimproved
- Trail
- Under/Overpass Space - Rd/R.R.
- Fire Area
- Primary Transport Routes
- Comins Transportation Route



FC Point Type	Label	Comments	Latitude WGS84 DDM	Longitude WGS84 DDM	FC Point Type	Label	Comments	Latitude WGS84 DDM	Longitude WGS84 DDM	FC Point Type	Label	Comments	Latitude WGS84 DDM
Camp	Ballfield Spike		48° 20.766' N	120° 42.967' W	Drop Point	53	Potential drop point. At the	47° 59.798' N	120° 04.787' W	Incident Command Post	ICP	Chelan Rocke Grounds, 1099 N	47° 52.730' N
Camp	CAMP FOUR		48° 01.447' N	120° 14.004' W	Drop Point	54	DP 54, moved DP 56 to camp	48° 00.864' N	120° 12.439' W	Medical		proposed Medevac Site, needs	48° 07.126' N
Camp	Lucerne		48° 12.071' N	120° 35.550' W	Drop Point	56	Camp four below the 8200 RD.	48° 01.448' N	120° 14.002' W	Staging Area		Weed wash and Staging	47° 49.900' N
Drop Point	100	DP100	48° 09.413' N	120° 08.973' W	Drop Point	58		48° 03.427' N	120° 17.408' W	Staging Area		no lowboys, suitable for crew	48° 02.921' N
Drop Point	102	DP102	48° 08.852' N	120° 10.024' W	Drop Point	60		48° 03.906' N	120° 19.496' W				
Drop Point	104	DP104/ draft site being pulled	48° 07.143' N	120° 13.620' W	Drop Point	68	DP 68	48° 04.407' N	120° 20.789' W				
Drop Point	105		48° 07.230' N	120° 10.545' W	Drop Point	69		48° 07.175' N	120° 18.185' W				
Drop Point	106		48° 07.305' N	120° 10.924' W	Drop Point	72		48° 05.707' N	120° 14.329' W				
Drop Point	110		47° 59.356' N	120° 00.623' W	Drop Point	76		48° 03.939' N	120° 09.871' W				
Drop Point	112		47° 59.882' N	120° 03.715' W	Drop Point	77		48° 02.528' N	120° 08.480' W				
Drop Point	114		48° 00.402' N	120° 03.239' W	Drop Point	79		48° 03.406' N	120° 05.789' W				
Drop Point	116	Good option for closer medic	47° 59.672' N	120° 02.105' W	Drop Point	82	82	47° 59.669' N	120° 16.182' W				
Drop Point	120	Black Canyon Snow Park, two	48° 04.021' N	120° 01.323' W	Drop Point	84	84	47° 58.183' N	120° 12.817' W				
Drop Point	130		47° 52.709' N	120° 07.723' W	Drop Point	86	HELIWELL location	48° 03.234' N	120° 08.538' W				
Drop Point	14	DP 14 moved by Div D 7/28/24	48° 18.447' N	120° 39.285' W	Drop Point	90	90	47° 50.162' N	120° 02.284' W				
Drop Point	140	Drop point 140	47° 59.977' N	120° 04.695' W	Hazard	68	Exposed culvert	48° 06.497' N	120° 13.469' W				
Drop Point	142		47° 59.373' N	120° 06.093' W	Hazard	79	Watercrossing, tight and	48° 06.219' N	120° 14.021' W				
Drop Point	146	Drop point 146, would need to	47° 58.453' N	120° 08.656' W	Hazard	146	Culvert collapse, downslope	48° 06.144' N	120° 16.462' W				
Drop Point	148	Drop point 148	47° 58.372' N	120° 09.239' W	Hazard	148	Culvert failure, Downslope side	48° 06.253' N	120° 16.588' W				
Drop Point	15		48° 18.067' N	120° 38.954' W	Hazard	16	Cattle guard filled in with	48° 05.244' N	120° 14.133' W				
Drop Point	16		48° 16.934' N	120° 38.030' W	Hazard	16	Partial road collapse- rotten	48° 01.154' N	120° 12.142' W				
Drop Point	162	*please change from 162-262	48° 01.318' N	120° 17.821' W	Hazard	162	Old well	48° 12.112' N	120° 35.497' W				
Drop Point	17	DP 16	48° 16.521' N	120° 37.792' W	Hazard	17	Electrical hazard.	48° 18.625' N	120° 39.428' W				
Drop Point	18	DP 18	48° 16.162' N	120° 37.381' W	Hazard	18	Flammable lockers, including	48° 18.605' N	120° 39.396' W				
Drop Point	19		48° 15.781' N	120° 37.177' W	Hazard	19	Gas Fuel Pump	48° 18.528' N	120° 39.442' W				
Drop Point	190		48° 18.805' N	120° 39.479' W	Hazard	190	Two explosives storage cubes in	48° 20.126' N	120° 41.868' W				
Drop Point	193	Hubbard Cabin. Land to boat	48° 19.221' N	120° 40.667' W	Hazard	193	Business in valley that sells	48° 19.596' N	120° 41.728' W				
Drop Point	194	evac site for firefighters,	48° 19.399' N	120° 40.578' W			Building Contains 55 Gal. drum	48° 19.475' N	120° 41.222' W				
Drop Point	196		48° 19.572' N	120° 41.189' W			of Hypochlorite Solution/ IRG						
Drop Point	20	DP 20	48° 14.734' N	120° 36.772' W			154, UN 1791). If compromised						
Drop Point	200	Drop point moved Div D	48° 20.453' N	120° 41.893' W			by fire, isolate at least 1/2 mile						
Drop Point	202	add drop point	48° 20.630' N	120° 42.378' W			radius from location.						
Drop Point	203	add drop point	48° 21.657' N	120° 43.967' W	Hazard	203		48° 20.777' N	120° 43.042' W				
Drop Point	204	add drop point	48° 22.316' N	120° 45.852' W	Hazard	204	55gal barrel of hypochlorite	48° 20.937' N	120° 43.222' W				
Drop Point	205	add drop point	48° 22.365' N	120° 47.332' W	Hazard	205	55gal barrel of hypochlorite	48° 20.214' N	120° 42.178' W				
Drop Point	21	DP 21	48° 14.499' N	120° 36.635' W	Hazard	21	Diesel tank north of new school	48° 20.256' N	120° 41.586' W				
Drop Point	22	DP 22	48° 14.156' N	120° 37.004' W	Hazard	22	Two unlabeled fuel tanks with	48° 19.325' N	120° 40.677' W				
Drop Point	23		48° 13.446' N	120° 36.206' W	Hazard	23	55gal barrel of hypochlorite	48° 21.416' N	120° 43.982' W				
Drop Point	24	DP 24	48° 12.751' N	120° 34.758' W	Hazard	24	Fuel tank	48° 14.494' N	120° 35.996' W				
Drop Point	250		47° 55.485' N	120° 10.695' W	Hazard	250	REAF Rickleff. Bee nest, flagged	48° 20.189' N	120° 41.320' W				
Drop Point	252		47° 53.984' N	120° 08.507' W	Hazard	252	Cow penship. Do not cross pink	48° 20.759' N	120° 42.937' W				
Drop Point	258		47° 57.117' N	120° 02.293' W	Hazard	258	Propane Tank	48° 20.160' N	120° 41.520' W				
Drop Point	26	DP 26	48° 12.405' N	120° 33.820' W	Hazard	26	1000-gallon Diesel tank for	48° 18.652' N	120° 39.323' W				
Drop Point	260	Drop Point 260	48° 01.563' N	120° 18.762' W	Hazard	260	Bees Nests	48° 16.186' N	120° 37.772' W				
Drop Point	268	Drop Point 268	47° 58.215' N	120° 11.569' W	Hazard	268	Large diesel tank Propane tank	48° 18.652' N	120° 39.329' W				
Drop Point	27	DP 27	48° 12.152' N	120° 35.400' W	Hazard	27	Barbed wire on ground, 20'	48° 18.469' N	120° 39.264' W				
Drop Point	28	DP 28	48° 11.899' N	120° 32.887' W	Hazard	28	REAF Rickleff. 6 snags that	48° 19.288' N	120° 40.220' W				
Drop Point	30		48° 10.898' N	120° 31.879' W	Hazard	30		48° 01.510' N	120° 06.620' W				
Drop Point	32	DP 32 - high quality Dock.	48° 10.615' N	120° 31.657' W	Hazard	32	fuel tank	48° 15.844' N	120° 37.242' W				
Drop Point	34	DP 34	48° 08.832' N	120° 29.915' W	Hazard	34	REAF Rickleff. YOUNG pacific	48° 20.354' N	120° 41.658' W				
Drop Point	36	DP 36	48° 07.655' N	120° 29.332' W	Hazard	36		48° 07.655' N	120° 47.363' W				
Drop Point	37		48° 02.725' N	120° 26.376' W	Hazard	37	2 Fuel, propane tanks behind	48° 22.753' N	120° 47.502' W				
Drop Point	38	DP 38	48° 02.917' N	120° 22.648' W	Hazard	38	Barbed wire, flagged with READ	48° 18.704' N	120° 39.388' W				
Drop Point	50	Wind dependent	47° 57.449' N	120° 08.925' W	Hazard	50	2 1200 gallon propane tanks in	48° 20.223' N	120° 42.188' W				
Drop Point	51	DP 51	47° 58.722' N	120° 10.294' W	Hazard	51	REAF Rickleff. In historic well	48° 20.082' N	120° 42.130' W				
Drop Point	52	Drop Point 52	47° 59.880' N	120° 09.011' W	Hazard	52		48° 02.010' N	120° 07.330' W				
					Hazard	Pits	Open test pits (2)	48° 07.649' N	120° 29.438' W				

