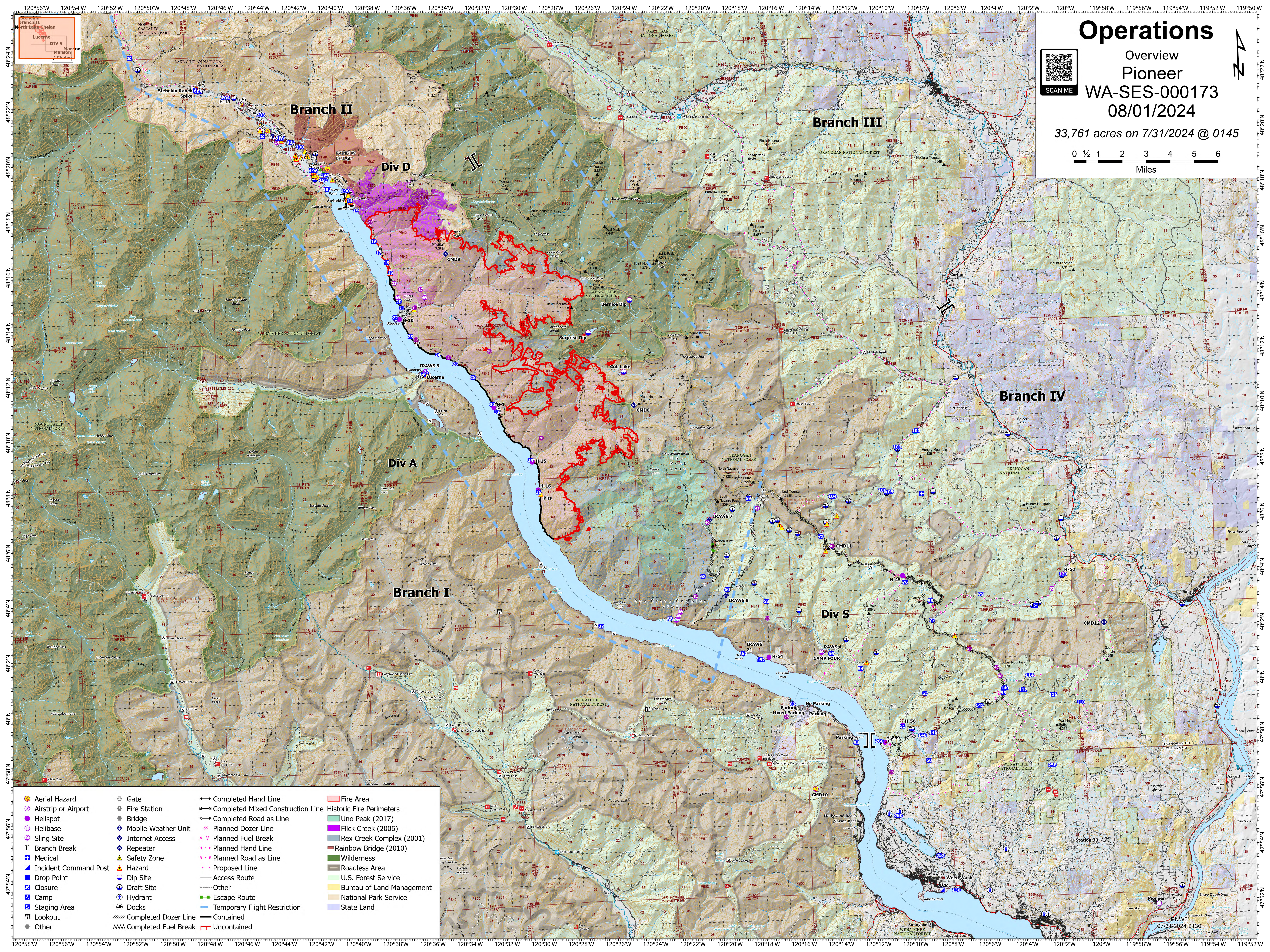
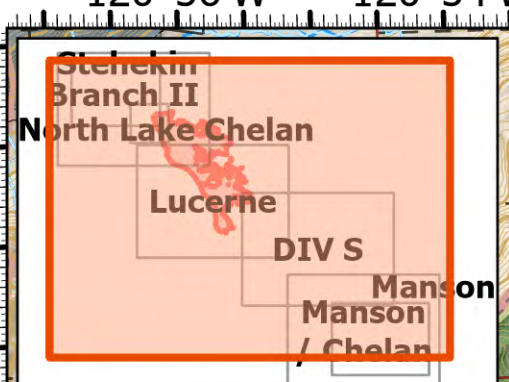
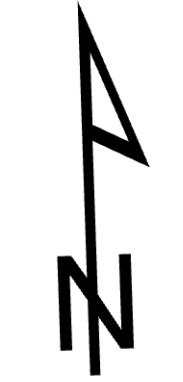
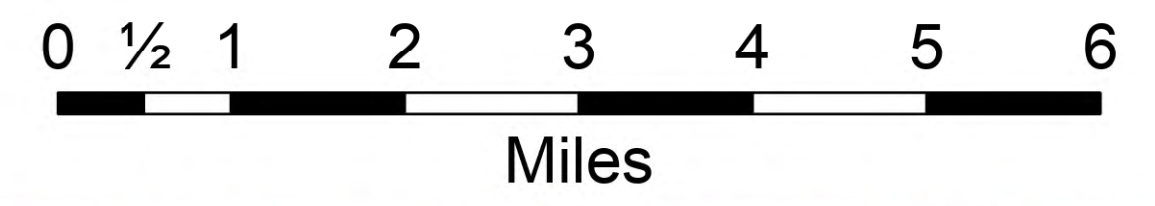


Operations

Overview
Pioneer
WA-SES-000173
08/01/2024

33,761 acres on 7/31/2024 @ 0145



- | | | | |
|-----------------------|----------------------|-----------------------------------|-------------------------------|
| Aerial Hazard | Gate | Completed Hand Line | Fire Area |
| Airstrip or Airport | Fire Station | Historic Fire Perimeters | Uno Peak (2017) |
| Helispot | Bridge | Completed Mixed Construction Line | Flick Creek (2006) |
| Helibase | Mobile Weather Unit | Planned Dozer Line | Rex Creek Complex (2001) |
| Sling Site | Internet Access | Planned Fuel Break | Rainbow Bridge Complex (2010) |
| Branch Break | Repeater | Planned Hand Line | Wilderness |
| Medical | Safety Zone | Planned Road as Line | Roadless Area |
| Incident Command Post | Hazard | Proposed Line | U.S. Forest Service |
| Drop Point | Dip Site | Access Route | Bureau of Land Management |
| Closure | Draft Site | Other | National Park Service |
| Camp | Hydrant | Escape Route | State Land |
| Staging Area | Docks | Temporary Flight Restriction | |
| Lookout | Completed Dozer Line | Contained | |
| Other | Completed Fuel Break | Uncontained | |

07/31/2024 2130