

Transportation Map

Pioneer Fire
WA-SES-000173
08/01/2024

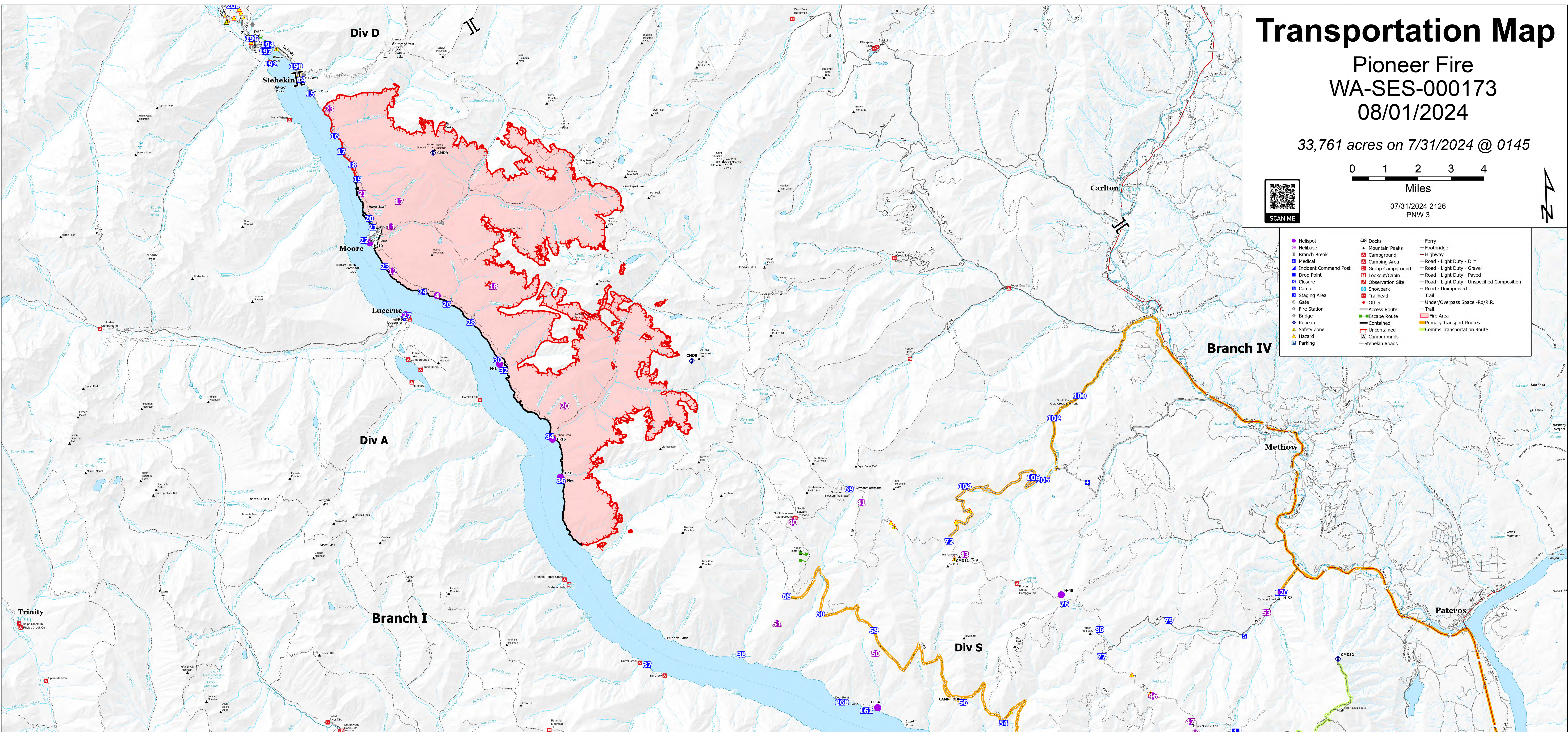
33,761 acres on 7/31/2024 @ 0145

0 1 2 3 4 Miles

07/31/2024 2126
PNW 3



- Helipoint
- Helibase
- II Branch Break
- Medical
- Drop Point
- Closure
- Camp
- Staging Area
- Gate
- Fire Station
- Bridge
- Repeater
- Safety Zone
- Hazard
- Parking
- Docks
- Mountain Peaks
- Campground
- Camping Area
- Lockout/Cabin
- Observation Site
- Snowpark
- Trailhead
- Other
- Access Route
- Escape Route
- Contained
- Uncontained
- Campgrounds
- Stehekin Roads
- Ferry
- Footbridge
- Highway
- Road - Light Duty - Dirt
- Road - Light Duty - Gravel
- Road - Light Duty - Paved
- Road - Light Duty - Unspecified Composition
- Road - Unimproved
- Trail
- Under/Overpass Space - Rd/R.R.
- Trail
- Fire Area
- Primary Transport Routes
- Comins Transportation Route



FC Point Type	Label	Comments	Latitude WGS84 DDM	Longitude WGS84 DDM	FC Point Type	Label	Comments	Latitude WGS84 DDM	Longitude WGS84 DDM
CAMP	CAMP FOUR		48° 01.447' N	120° 14.004' W	Drop Point	68		48° 04.407' N	120° 20.789' W
Camp	Lucerne		48° 12.071' N	120° 35.550' W	Drop Point	69		48° 07.175' N	120° 18.185' W
Camp	Stehekin Ranch Spike		48° 22.623' N	120° 40.765' W	Drop Point	72		48° 05.207' N	120° 14.329' W
Drop Point	100	DP100	48° 09.817' N	120° 08.971' W	Drop Point	76		48° 03.509' N	120° 09.071' W
Drop Point	102	DP102	48° 08.852' N	120° 10.024' W	Drop Point	77		48° 02.538' N	120° 08.480' W
Drop Point	104	DP104	48° 07.143' N	120° 13.630' W	Drop Point	79		48° 03.465' N	120° 05.789' W
Drop Point	105		48° 07.237' N	120° 10.545' W	Drop Point	82		47° 59.669' N	120° 14.152' W
Drop Point	106		48° 07.305' N	120° 10.924' W	Drop Point	84		47° 58.183' N	120° 12.817' W
Drop Point	110		47° 59.356' N	120° 09.623' W	Drop Point	86		48° 03.234' N	120° 08.538' W
Drop Point	112		47° 59.882' N	120° 03.715' W	Drop Point	90		47° 56.268' N	120° 02.738' W
Drop Point	114		48° 00.402' N	120° 03.339' W	Hazard		Exposed culvert	48° 06.497' N	120° 13.469' W
Drop Point	116	Good option for closer medic site for road crew and staging area for equipment now that DP 103 will have so much timber	47° 59.672' N	120° 02.105' W	Hazard		Watercrossing, tight and unstable downslope	48° 06.219' N	120° 14.021' W
Drop Point	120	Back Canyon Snow Park, two volume staged pumps mk-1222-248 and mk-1222-246	48° 04.031' N	120° 01.323' W	Hazard		Culvert collapse, downslope side of road	48° 06.144' N	120° 16.462' W
Drop Point	130		47° 52.709' N	120° 07.723' W	Hazard		Culvert failure, downslope side of road	48° 05.217' N	120° 15.386' W
Drop Point	14	DP 14	48° 18.447' N	120° 39.285' W	Hazard		Cattle guard filled in with material. Have heavy equipment pick up blade before crossing.	48° 05.244' N	120° 14.133' W
Drop Point	140	Drop point 140	47° 59.977' N	120° 04.699' W	Hazard		Partial road collapse - rotten wooden culvert	48° 01.154' N	120° 12.142' W
Drop Point	142		47° 59.373' N	120° 06.093' W	Hazard		Old well	48° 12.112' N	120° 35.497' W
Drop Point	146	Drop point 146, would need to be pushed out with a dozer for folds tanks and parking	47° 58.453' N	120° 08.656' W	Hazard		Electrical hazard.	48° 18.625' N	120° 39.428' W
Drop Point	148	Drop point 148	47° 58.172' N	120° 09.229' W	Hazard		Flammable lockers. Including flammable liquids and gas (propane)	48° 39.396' W	120° 39.396' W
Drop Point	15		48° 18.067' N	120° 38.954' W	Hazard		Gas fuel pumps	48° 39.442' W	120° 39.442' W
Drop Point	16		48° 16.934' N	120° 38.839' W	Hazard		Two explosive storage cubes in this area. Containers are white, metal, and clearly labeled.	48° 20.135' N	120° 41.868' W
Drop Point	163	Please change from 163-262 as per SOP's assigned numbers	48° 01.518' N	120° 37.823' W	Hazard		Business in valley that sells gasoline and propane. Has large number of propane tanks and large quantity of gasoline.	48° 19.598' N	120° 41.228' W
Drop Point	17	DP 17	48° 16.521' N	120° 37.792' W	Hazard		Building contains 55 Gal. drum of Hypochlorite solution (IRG 154, UN 1791). If compromised by fire, isolate at least 1/2 mile radius from location.	48° 19.475' N	120° 41.222' W
Drop Point	18	DP 18	48° 16.162' N	120° 37.381' W					
Drop Point	19		48° 15.781' N	120° 37.177' W					
Drop Point	193		48° 18.882' N	120° 39.479' W					
Drop Point	192		48° 18.885' N	120° 40.484' W					
Drop Point	193	Hubbard Cabin. Land to host evic site for firefighters, medvacs, and public. In the event evic site dawns or other impacts to transport. Thunder jet, owned by mountain barge services, can be parked here. 40 residents will take own boats during an evic	48° 19.221' N	120° 40.667' W	Hazard		55gal barrel of hypochlorite solution (IRG 154, UN 1791) inside pumphouse. Can aerosolize if exposed to heat and flame. If structure is compromised by fire, site should be isolated in a 0.5 miles radius.	48° 20.777' N	120° 43.042' W
Drop Point	194		48° 19.399' N	120° 40.578' W	Hazard		55gal barrel of hypochlorite solution (IRG 154, UN 1791) inside pumphouse. Can aerosolize if exposed to heat and flame. If structure is compromised by fire, site should be isolated in a 0.5 miles radius.	48° 20.937' N	120° 43.222' W
Drop Point	196		48° 19.572' N	120° 41.189' W	Hazard		55gal barrel of hypochlorite solution (IRG 154, UN 1791) inside pumphouse. Can aerosolize if exposed to heat and flame. If structure is compromised by fire, site should be isolated in a 0.5 miles radius.	48° 20.214' N	120° 42.178' W
Drop Point	20	DP 20	48° 14.247' N	120° 26.272' W	Hazard		55gal barrel of hypochlorite solution (IRG 154, UN 1791) inside pumphouse. Can aerosolize if exposed to heat and flame. If structure is compromised by fire, site should be isolated in a 0.5 miles radius.	48° 20.265' N	120° 41.586' W
Drop Point	200		48° 20.453' N	120° 41.893' W	Hazard		Two unlabelled fuel tanks with pump	48° 19.077' N	120° 39.077' W
Drop Point	202		48° 20.638' N	120° 42.378' W	Hazard		55gal barrel of hypochlorite solution (IRG 154, UN 1791) inside pumphouse. Can aerosolize if exposed to heat and flame. If structure is compromised by fire, site should be isolated in a 0.5 miles radius.	48° 21.416' N	120° 43.982' W
Drop Point	203		48° 21.657' N	120° 43.967' W	Hazard		Diesel tank north of new school	48° 20.265' N	120° 41.586' W
Drop Point	204		48° 22.318' N	120° 43.852' W	Hazard		Two unlabelled fuel tanks with pump	48° 19.077' N	120° 39.077' W
Drop Point	205		48° 22.565' N	120° 47.332' W	Hazard		55gal barrel of hypochlorite solution (IRG 154, UN 1791) inside pumphouse. Can aerosolize if exposed to heat and flame. If structure is compromised by fire, site should be isolated in a 0.5 miles radius.	48° 21.416' N	120° 43.982' W
Drop Point	21	21	48° 14.499' N	120° 36.635' W	Hazard		Business in valley that sells gasoline and propane. Has large number of propane tanks and large quantity of gasoline.	48° 19.598' N	120° 41.228' W
Drop Point	210		48° 20.713' N	120° 40.578' W	Hazard		55gal barrel of hypochlorite solution (IRG 154, UN 1791) inside pumphouse. Can aerosolize if exposed to heat and flame. If structure is compromised by fire, site should be isolated in a 0.5 miles radius.	48° 20.777' N	120° 43.042' W
Drop Point	22	DP 22	48° 14.156' N	120° 37.004' W	Hazard		Fuel tank	48° 14.494' N	120° 35.996' W
Drop Point	23		48° 13.446' N	120° 36.206' W	Hazard		Low warning. Do not cross pink flagging, do not touch plants	48° 20.777' N	120° 43.042' W
Drop Point	24	DP 24	48° 13.251' N	120° 36.756' W	Hazard		Propane tank	48° 20.169' N	120° 41.520' W
Drop Point	250		47° 55.485' N	120° 10.695' W	Hazard		1000-gallon Diesel tank for generator, within 40 feet of contingency line and heavy brush pile. Run the treatment plant	48° 18.625' N	120° 39.323' W
Drop Point	252		47° 53.984' N	120° 08.507' W	Hazard		Large diesel tank. Propane tank nearby. Both need substantial work to remove adjacent fuels	48° 18.656' N	120° 39.329' W
Drop Point	258		48° 01.117' N	120° 02.293' W	Hazard		Very large buried propane tank. Most of tank is underground, vents and fill station are above ground	48° 18.469' N	120° 39.364' W
Drop Point	26	Drop Point 260	48° 12.462' N	120° 31.820' W	Hazard		REAF Rickoff. 6 snags that could fall in road. Fellies can drop them sideways on slope. Power lines non-issu. 7.12.24	48° 19.288' N	120° 40.220' W
Drop Point	260	Drop Point 260	48° 01.563' N	120° 18.762' W	Hazard		fuel tank	48° 01.510' N	120° 06.620' W
Drop Point	268	Drop Point 268	47° 58.215' N	120° 11.569' W	Hazard		fuel tank	48° 15.844' N	120° 32.242' W
Drop Point	28	DP 28	48° 12.532' N	120° 35.406' W	Hazard		REAF Rickoff. YOUNG pacific rattlesnake crossing hard line. Possible den site nearby (more young and adults). Flagged pink as a warning to proceed with caution. 7.14.24.	48° 20.354' N	120° 41.658' W
Drop Point	28	DP 28	48° 11.899' N	120° 32.887' W	Hazard		Barbed wire on ground, 20' Flagged with RED tape	48° 22.753' N	120° 47.363' W
Drop Point	30	DP 30 - high quality Dock	48° 10.898' N	120° 31.879' W	Hazard		2 Fuel, propane tanks behind house. 5 and 50 gallon. 7.15.24	48° 22.753' N	120° 47.502' W
Drop Point	32	DP 32	48° 10.453' N	120° 30.272' W	Hazard		Barbed wire, flagged with RED tape. 7.24.2024	48° 19.398' N	120° 39.388' W
Drop Point	34	DP 34	48° 08.832' N	120° 29.915' W	Hazard		2 1200 gallon propane tanks in between 2 park residences. 7.20.24	48° 20.213' N	120° 42.188' W
Drop Point	36	DP 36	48° 07.657' N	120° 29.532' W	Hazard		REAF Rickoff. In historic well house - 6 gallons of hypochlorite solution. 7.20.24 wood building scraped around base.	48° 20.082' N	120° 42.130' W
Drop Point	37	DP 37	48° 02.725' N	120° 26.376' W	Hazard		Propane tank	48° 21.149' N	120° 44.073' W
Drop Point	38	DP 38	48° 02.817' N	120° 25.448' W	Hazard		Open till site (2)	48° 07.669' N	120° 29.438' W
Drop Point	50	Wind dependent	47° 57.449' N	120° 08.925' W	Hazard		Shingleton Park, S Redline Rd, Manson, WA 98831	47° 52.750' N	120° 08.487' W
Drop Point	51	DP 51	47° 58.722' N	120° 10.294' W	Hazard		proposed Medevac Site. needs improvement	48° 07.120' N	120° 08.794' W
Drop Point	52	Potential drop point. At the 8020 & 8210 yds.	47° 59.803' N	120° 04.011' W	Hazard		Wind wash and Staging	47° 49.902' N	119° 59.347' W
Drop Point	53	DP 53	47° 59.798' N	120° 04.780' W	Hazard		no lockups, suitable for crew trucks and engines	48° 02.010' N	120° 03.330' W
Drop Point	54	DP 54	48° 00.864' N	120° 12.430' W	Hazard			48° 21.149' N	120° 44.073' W
Drop Point	54	Camp four below the 8200 RD. Spike.	48° 01.448' N	120° 14.002' W	Hazard			48° 20.213' N	120° 42.188' W
Drop Point	58		48° 03.427' N	120° 17.468' W	Hazard			48° 20.213' N	120° 42.188' W
Drop Point	60		48° 03.906' N	120° 19.496' W	Hazard			48° 20.082' N	120° 42.130' W

