

Air Ops Vicinity

0 4 8
US Nautical Miles

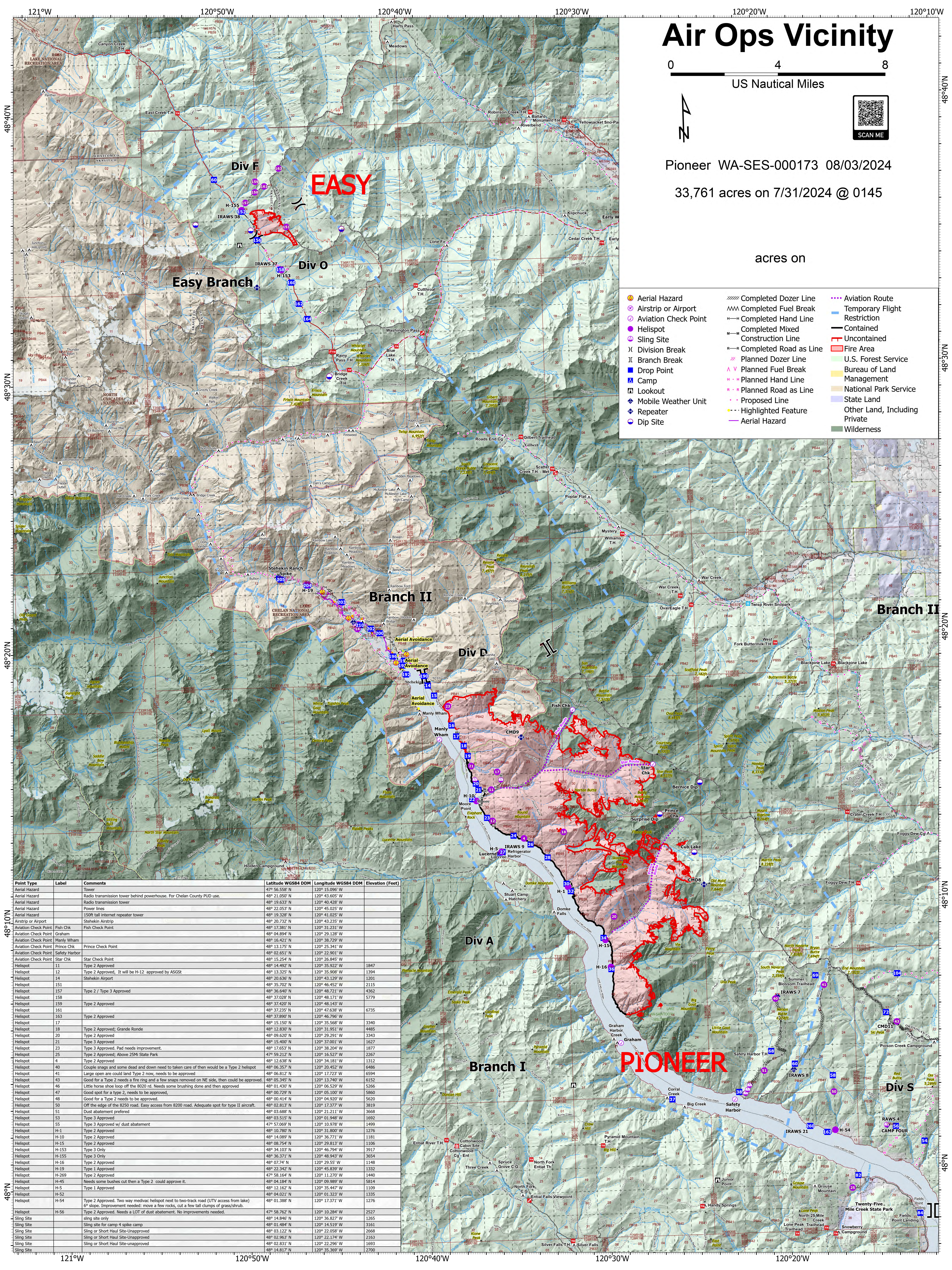


Pioneer WA-SES-000173 08/03/2024

33,761 acres on 7/31/2024 @ 0145

acres on

- Aerial Hazard
- Airstrip or Airport
- Aviation Check Point
- HeliSpot
- Sling Site
- Division Break
- Branch Break
- Drop Point
- Camp
- Lookout
- Mobile Weather Unit
- Repeater
- Dip Site
- Completed Dozer Line
- Completed Fuel Break
- Completed Hand Line
- Completed Mixed Construction Line
- Completed Road as Line
- Planned Dozer Line
- Planned Fuel Break
- Planned Hand Line
- Planned Road as Line
- Proposed Line
- Highlighted Feature
- Aerial Hazard
- Aviation Route
- Temporary Flight Restriction
- Contained
- Uncontained
- Fire Area
- U.S. Forest Service
- Bureau of Land Management
- National Park Service
- State Land
- Other Land, Including Private
- Wilderness



Point Type	Label	Comments	Latitude WGS84 DDM	Longitude WGS84 DDM	Elevation (Feet)
Aerial Hazard	1	Radio transmission tower behind powerhouse. For Chelan County PUD use.	48° 56.558' N	120° 15.996' W	1276
Aerial Hazard	2	Radio transmission tower	48° 21.050' N	120° 43.605' W	6152
Aerial Hazard	3	Power lines	48° 19.633' N	120° 40.428' W	5266
Aerial Hazard	4	150ft tall internet repeater tower	48° 22.053' N	120° 45.025' W	5860
Airstrip or Airport	5	Stehekin Airstrip	48° 19.328' N	120° 41.025' W	5620
Aviation Check Point	6	Fish Chk	48° 20.732' N	120° 43.235' W	3819
Aviation Check Point	7	Graham	48° 17.381' N	120° 31.231' W	3668
Aviation Check Point	8	Manly Wham	48° 04.894' N	120° 29.128' W	1499
Aviation Check Point	9	Prince Chk	48° 16.421' N	120° 38.729' W	1276
Aviation Check Point	10	Safety Harbor	48° 13.175' N	120° 25.541' W	1181
Aviation Check Point	11	Star Chk	48° 02.651' N	120° 26.845' W	3917
HeliSpot	12	Type 2 Approved	48° 15.254' N	120° 26.845' W	3654
HeliSpot	13	Type 2 Approved, It will be H-12 approved by AGS2	48° 14.492' N	120° 35.922' W	1148
HeliSpot	14	Stehekin Airport	48° 13.325' N	120° 35.908' W	1332
HeliSpot	15	Type 2 Approved	48° 20.636' N	120° 43.129' W	1440
HeliSpot	16	Type 2 Approved	48° 35.702' N	120° 46.452' W	5814
HeliSpot	17	Type 2 / Type 3 Approved	48° 36.640' N	120° 48.721' W	1109
HeliSpot	18	Type 2 Approved	48° 37.028' N	120° 48.171' W	1335
HeliSpot	19	Type 2 Approved	48° 37.420' N	120° 48.143' W	1276
HeliSpot	20	Type 2 Approved	48° 37.235' N	120° 47.635' W	6735
HeliSpot	21	Type 2 Approved	48° 37.896' N	120° 46.796' W	1106
HeliSpot	22	Type 2 Approved, Grande Ronde	48° 15.150' N	120° 35.568' W	3340
HeliSpot	23	Type 2 Approved	48° 12.830' N	120° 31.951' W	4485
HeliSpot	24	Type 3 Approved, Pad needs improvement.	48° 09.620' N	120° 29.291' W	3343
HeliSpot	25	Type 2 Approved, Above 25MI State Park	48° 15.400' N	120° 37.001' W	1627
HeliSpot	26	Type 2 Approved	48° 17.653' N	120° 38.204' W	1877
HeliSpot	27	Type 2 Approved	47° 59.212' N	120° 16.527' W	2267
HeliSpot	28	Type 2 Approved	48° 12.638' N	120° 34.181' W	1312
HeliSpot	29	Couple snags and some dead and down need to taken care of then would be a Type 2 heliSpot	48° 06.357' N	120° 20.452' W	6486
HeliSpot	30	Large open area could land Type 2 now, needs to be approved	48° 06.812' N	120° 17.723' W	6594
HeliSpot	31	Good for a Type 2 needs a fire ring and a few snags removed on NE side, then could be approved.	48° 05.345' N	120° 13.740' W	6152
HeliSpot	32	Little horse show loop off the 8020 rd. Needs some brushing done and then approved	48° 01.430' N	120° 06.529' W	5266
HeliSpot	33	Good spot for a type 2, needs to be approved,	48° 00.729' N	120° 05.100' W	5860
HeliSpot	34	Good for a Type 2 needs to be approved,	48° 00.414' N	120° 04.920' W	5620
HeliSpot	35	Off the edge of the 8250 road. Easy access from 8200 road. Adequate spot for type II aircraft.	48° 02.813' N	120° 17.377' W	3819
HeliSpot	36	Dust abatement preferred	48° 03.688' N	120° 21.211' W	3668
HeliSpot	37	Type 3 Approved	48° 03.515' N	120° 01.948' W	1692
HeliSpot	38	Type 3 Approved w/ dust abatement	47° 57.069' N	120° 10.978' W	1499
HeliSpot	39	Type 2 Approved	48° 10.780' N	120° 31.800' W	1276
HeliSpot	40	Type 2 Approved	48° 14.089' N	120° 35.771' W	1181
HeliSpot	41	Type 2 Approved	48° 09.754' N	120° 26.813' W	1106
HeliSpot	42	Type 3 Only	48° 34.103' N	120° 46.794' W	3917
HeliSpot	43	Type 3 Only	48° 36.371' N	120° 48.943' W	3654
HeliSpot	44	Type 2 Approved	48° 07.74' N	120° 29.55' W	1148
HeliSpot	45	Type 2 Approved	48° 22.342' N	120° 45.839' W	1332
HeliSpot	46	Type 2 Approved	47° 58.164' N	120° 11.270' W	1440
HeliSpot	47	Needs some bushes cut then a Type 2 could approve it.	48° 04.184' N	120° 09.989' W	5814
HeliSpot	48	Type 1 Approved	48° 12.162' N	120° 35.447' W	1109
HeliSpot	49	Type 2 Approved. Two way medic heliSpot next to two-track road (UTV access from lake) 6+ slope. Improvement needed: move a few rocks, cut a few tall clumps of grass/shrub.	48° 01.388' N	120° 17.371' W	1276
HeliSpot	50	Type 2 Approved. Needs a LOT of dust abatement. No improvements needed.	47° 58.762' N	120° 10.284' W	2527
Sling Site	51	sling site only	48° 14.846' N	120° 36.827' W	1265
Sling Site	52	Sling site for camp 4 spike camp	48° 01.484' N	120° 14.519' W	3161
Sling Site	53	Sling or Short Haul Site-Unapproved	48° 03.122' N	120° 22.058' W	2668
Sling Site	54	Sling or Short Haul Site-Unapproved	48° 02.963' N	120° 22.174' W	2163
Sling Site	55	Sling or Short Haul Site-Unapproved	48° 02.831' N	120° 22.296' W	1693
Sling Site	56	Sling or Short Haul Site-Unapproved	48° 14.817' N	120° 35.369' W	2700