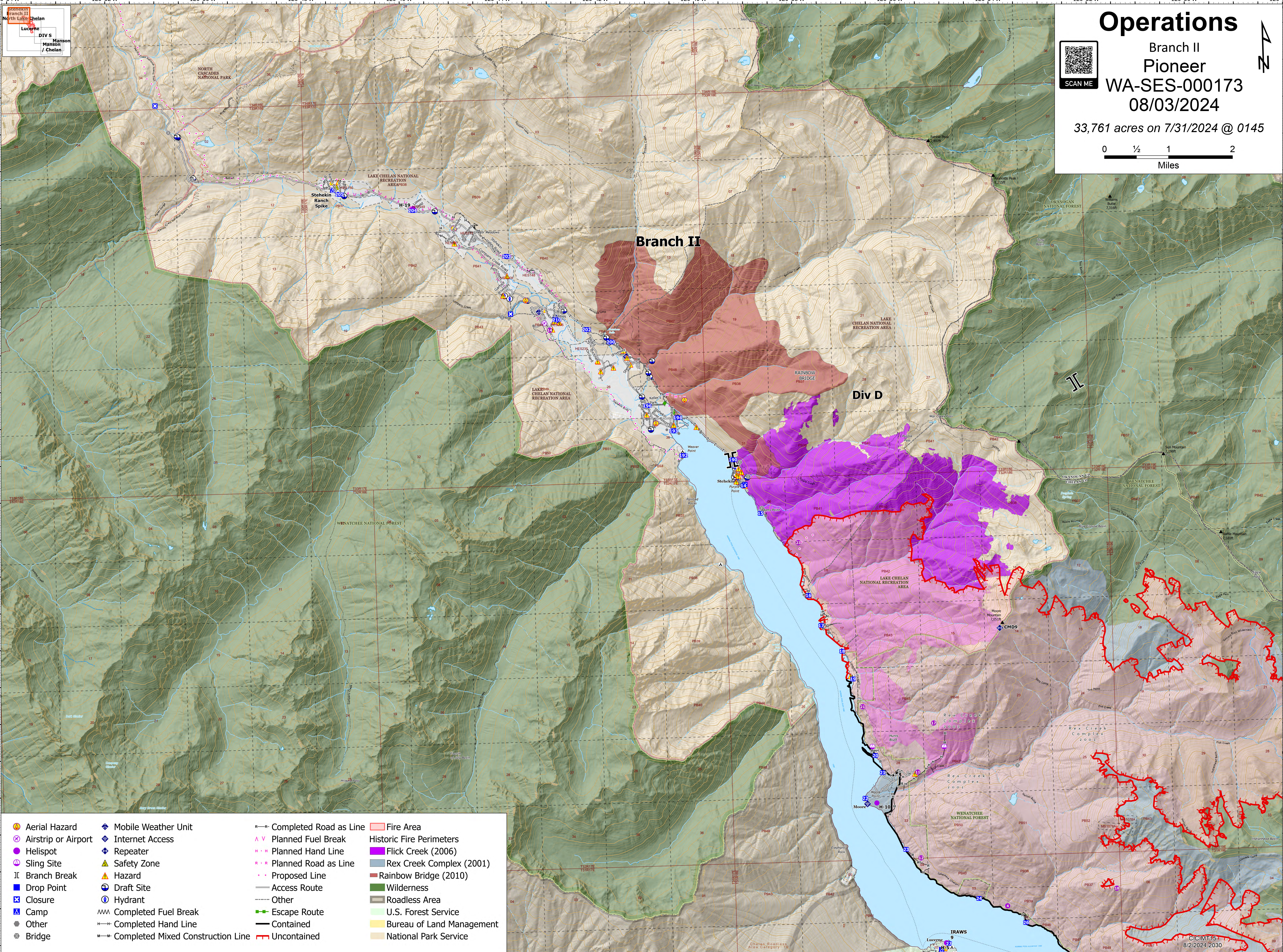
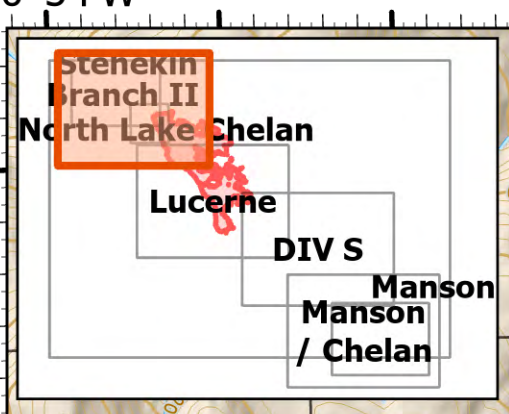
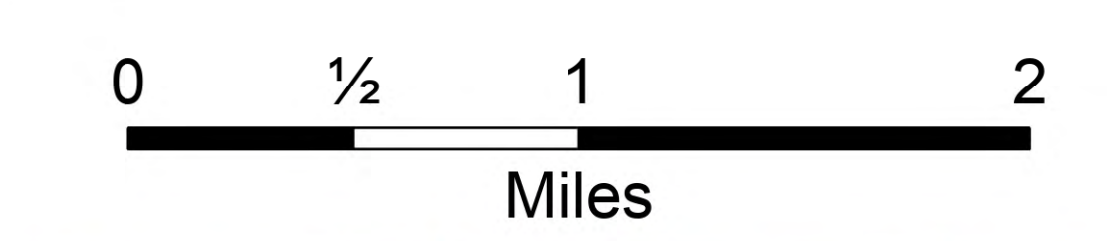


Operations

Branch II
Pioneer
WA-SES-000173
08/03/2024

33,761 acres on 7/31/2024 @ 0145



Aerial Hazard	Mobile Weather Unit	Completed Road as Line	Fire Area
Airstrip or Airport	Internet Access	Planned Fuel Break	Historic Fire Perimeters
Helispot	Repeater	Planned Hand Line	Flick Creek (2006)
Sling Site	Safety Zone	Planned Road as Line	Rex Creek Complex (2001)
Branch Break	Hazard	Proposed Line	Rainbow Bridge (2010)
Drop Point	Draft Site	Access Route	Wilderness
Closure	Hydrant	Other	Roadless Area
Camp	Completed Fuel Break	Escape Route	U.S. Forest Service
Other	Completed Hand Line	Contained	Bureau of Land Management
Bridge	Completed Mixed Construction Line	Uncontained	National Park Service

CICIM15
8/2/2024 2030