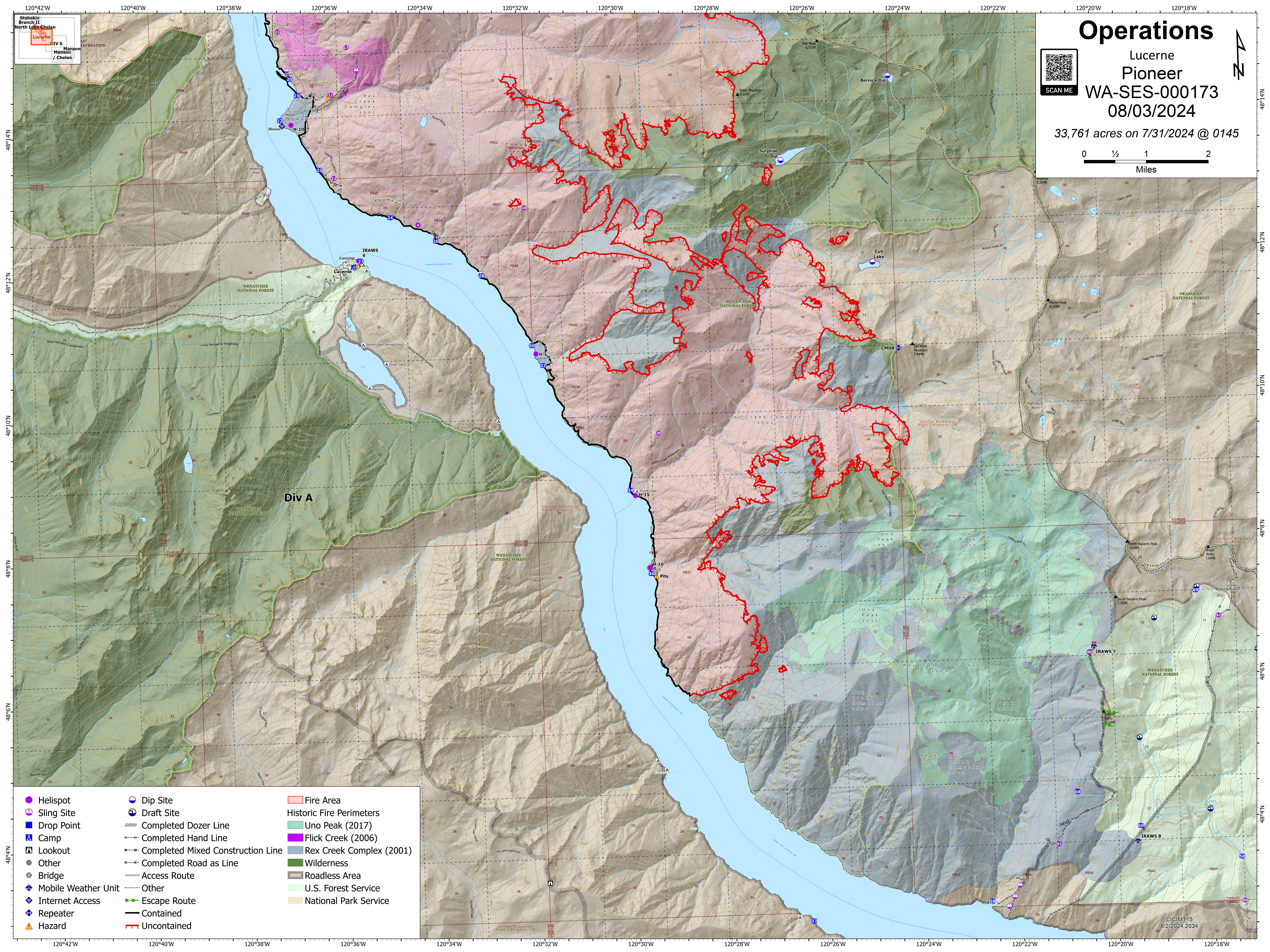
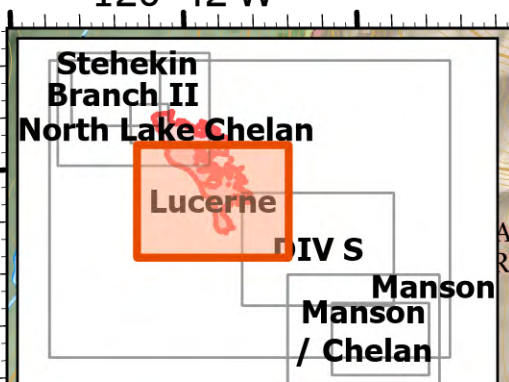
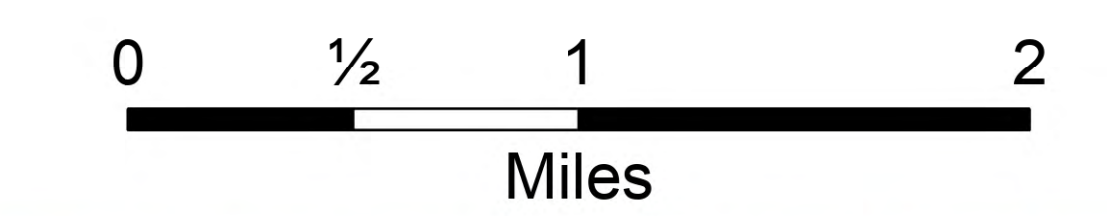


# Operations

Lucerne  
Pioneer  
WA-SES-000173  
08/03/2024

33,761 acres on 7/31/2024 @ 0145



- |                       |                                     |                            |
|-----------------------|-------------------------------------|----------------------------|
| ● Helispot            | ⊕ Dip Site                          | ▭ Fire Area                |
| ⊕ Sling Site          | ⊕ Draft Site                        | ▭ Historic Fire Perimeters |
| ⊕ Drop Point          | ⊕ Completed Dozer Line              | ▭ Uno Peak (2017)          |
| ⊕ Camp                | ⊕ Completed Hand Line               | ▭ Flick Creek (2006)       |
| ⊕ Lookout             | ⊕ Completed Mixed Construction Line | ▭ Rex Creek Complex (2001) |
| ⊕ Other               | ⊕ Completed Road as Line            | ▭ Wilderness               |
| ⊕ Bridge              | ⊕ Access Route                      | ▭ Roadless Area            |
| ⊕ Mobile Weather Unit | ⊕ Other                             | ▭ U.S. Forest Service      |
| ⊕ Internet Access     | ⊕ Escape Route                      | ▭ National Park Service    |
| ⊕ Repeater            | ⊕ Contained                         |                            |
| ⊕ Hazard              | ⊕ Uncontained                       |                            |